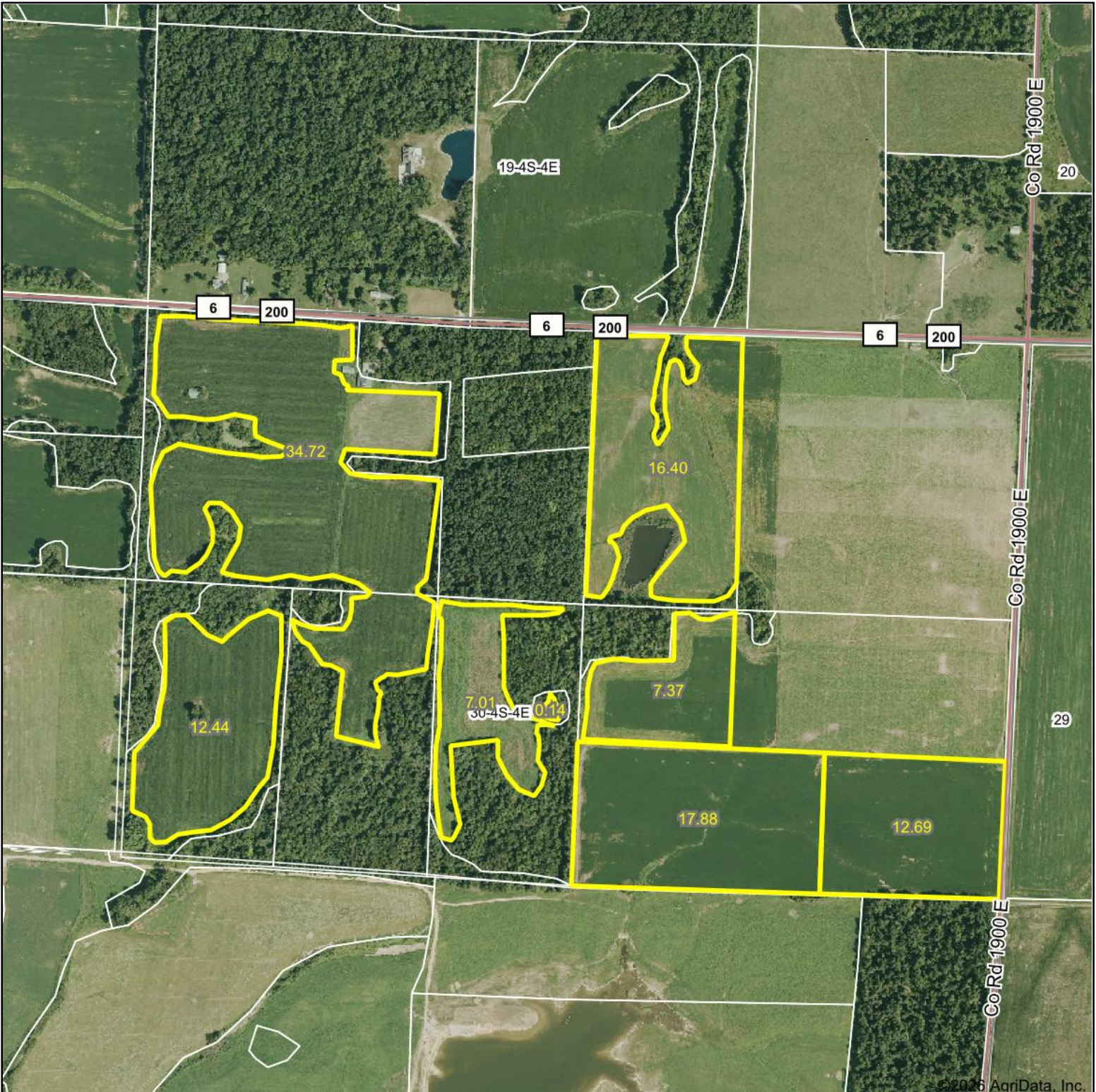
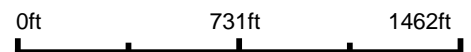


Aerial Map



©2026 AgriData, Inc.

Boundary Center: 38° 9' 5.28, -88° 48' 11.73



30-4S-4E
Jefferson County
Illinois



Maps Provided By:

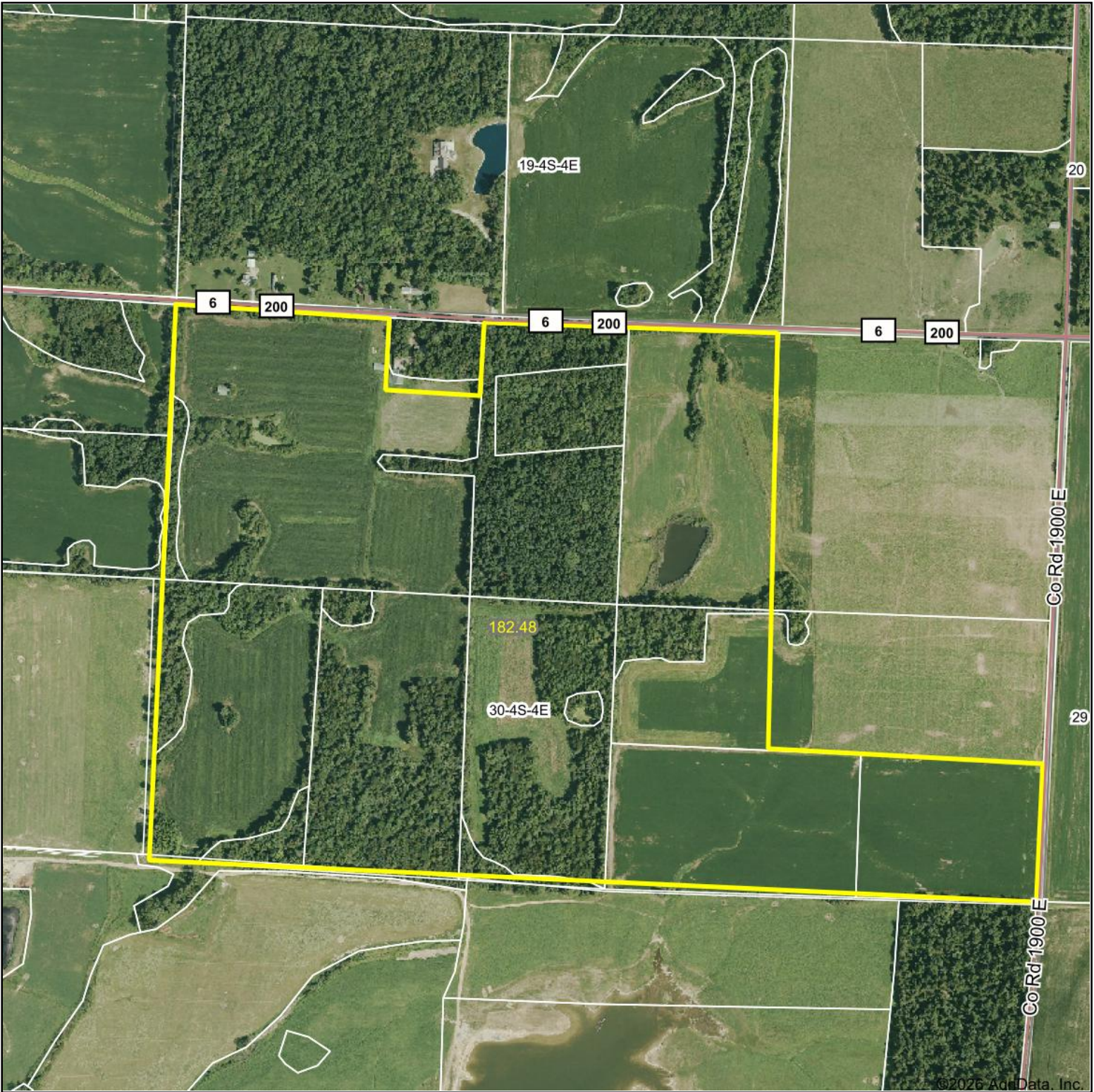


© AgriData, Inc. 2025 www.AgriDataInc.com

6/3/2026

Field borders provided by Farm Service Agency as of 5/21/2008.

Aerial Map



Boundary Center: 38° 9' 5.48, -88° 48' 12.06



30-4S-4E
Jefferson County
Illinois



Maps Provided By:

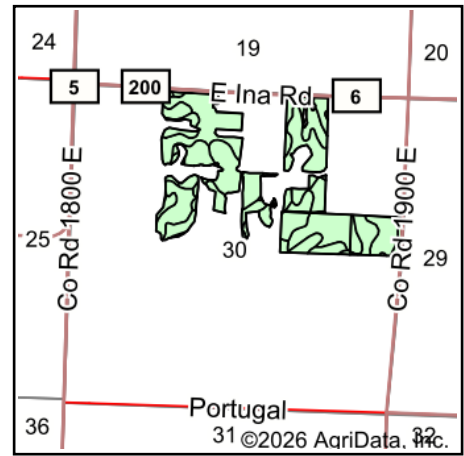
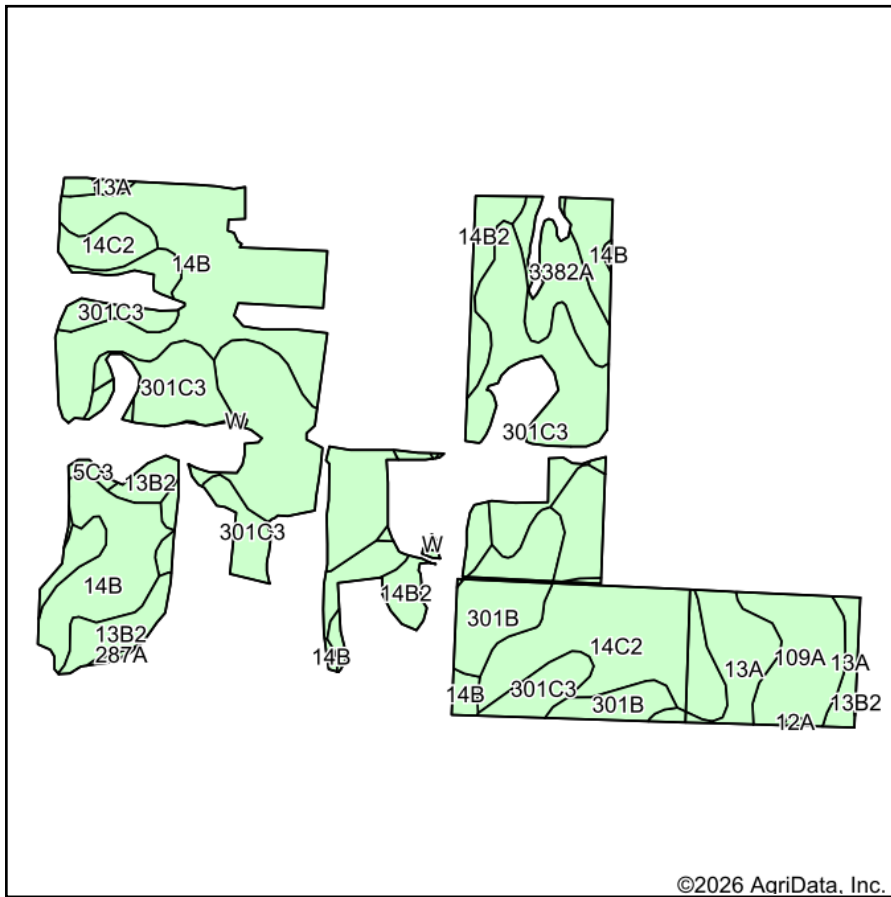


© AgriData, Inc. 2025 www.AgriDataInc.com

6/3/2026

Field borders provided by Farm Service Agency as of 5/21/2008.

Soils Map



State: **Illinois**
 County: **Jefferson**
 Location: **30-4S-4E**
 Township: **Moore's Prairie**
 Acres: **108.65**
 Date: **6/3/2026**



Soils data provided by USDA and NRCS.

Area Symbol: IL081, Soil Area Version: 18

Code	Soil Description	Acres	Percent of field	Corn Bu/A	Soybeans Bu/A	Wheat Bu/A	Crop productivity index for optimum management
**14B	Ava silt loam, 2 to 5 percent slopes	24.56	22.7%	**134	**44	**54	**99
**301C3	Grantsburg silty clay loam, 5 to 10 percent slopes, severely eroded	21.72	20.0%	**99	**34	**41	**75
**301B	Grantsburg silt loam, 2 to 5 percent slopes	18.65	17.2%	**131	**45	**54	**100
**14C2	Ava silt loam, 5 to 10 percent slopes, eroded	13.94	12.8%	**120	**39	**49	**89
13A	Bluford silt loam, 0 to 2 percent slopes	8.31	7.6%	136	44	55	101
**13B2	Bluford silt loam, 2 to 5 percent slopes, eroded	6.97	6.4%	**129	**42	**52	**96
109A	Raccoon silt loam, 0 to 2 percent slopes	5.68	5.2%	144	46	56	106
**3382A	Belknap silt loam, 0 to 2 percent slopes, frequently flooded	4.12	3.8%	**140	**47	**57	**105
**14B2	Ava silt loam, 2 to 5 percent slopes, eroded	3.88	3.6%	**126	**41	**51	**93
**5C3	Blair silty clay loam, 5 to 10 percent slopes, severely eroded	0.43	0.4%	**101	**33	**40	**76
287A	Chauncey silt loam, 0 to 2 percent slopes	0.15	0.1%	161	51	63	119
W	Water	0.15	0.1%				
12A	Wynooose silt loam, 0 to 2 percent slopes	0.09	0.1%	128	42	51	97
Weighted Average				124.7	41.4	50.7	93.2

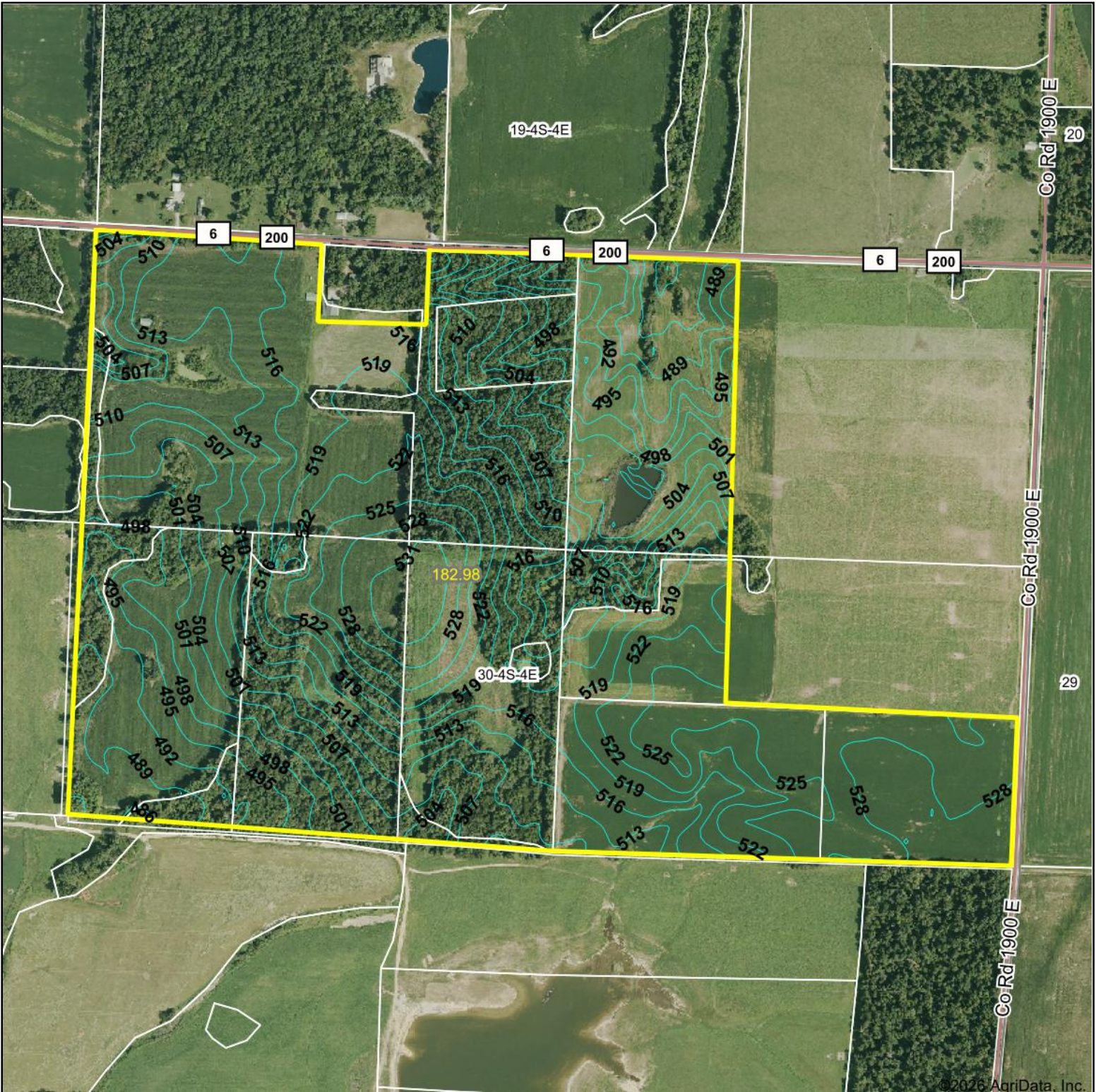
Table: Optimum Crop Productivity Ratings for Illinois Soil EFOTG are sourced from Bulletin 811 calculated Map Unit Base Yield Indices, and adjusted (Adj) for slope, erosion, flooding, and surface texture. Publication Date: 02-08-2023

Crop yields and productivity (B811 EFOTG) are maintained at the following USDA web site: 2023 Illinois Soil Productivity and Yield Indices:

<https://efotg.sc.egov.usda.gov/#/state/IL/documents/section=2&folder=52809>

** Base indexes from Bulletin 811 adjusted for slope, erosion, flooding, and surface texture according to the Il. Soils EFOTG

Topography Contours



©2026 AgriData, Inc.

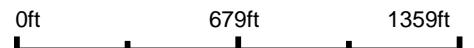


Maps Provided By:



© AgriData, Inc. 2025 www.AgriDataInc.com

Source: USGS 10 meter dem
 Interval(ft): 3.0
 Min: 479.1
 Max: 534.5
 Range: 55.4
 Average: 511.4
 Standard Deviation: 12.07 ft



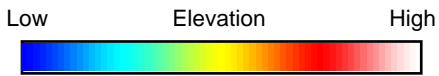
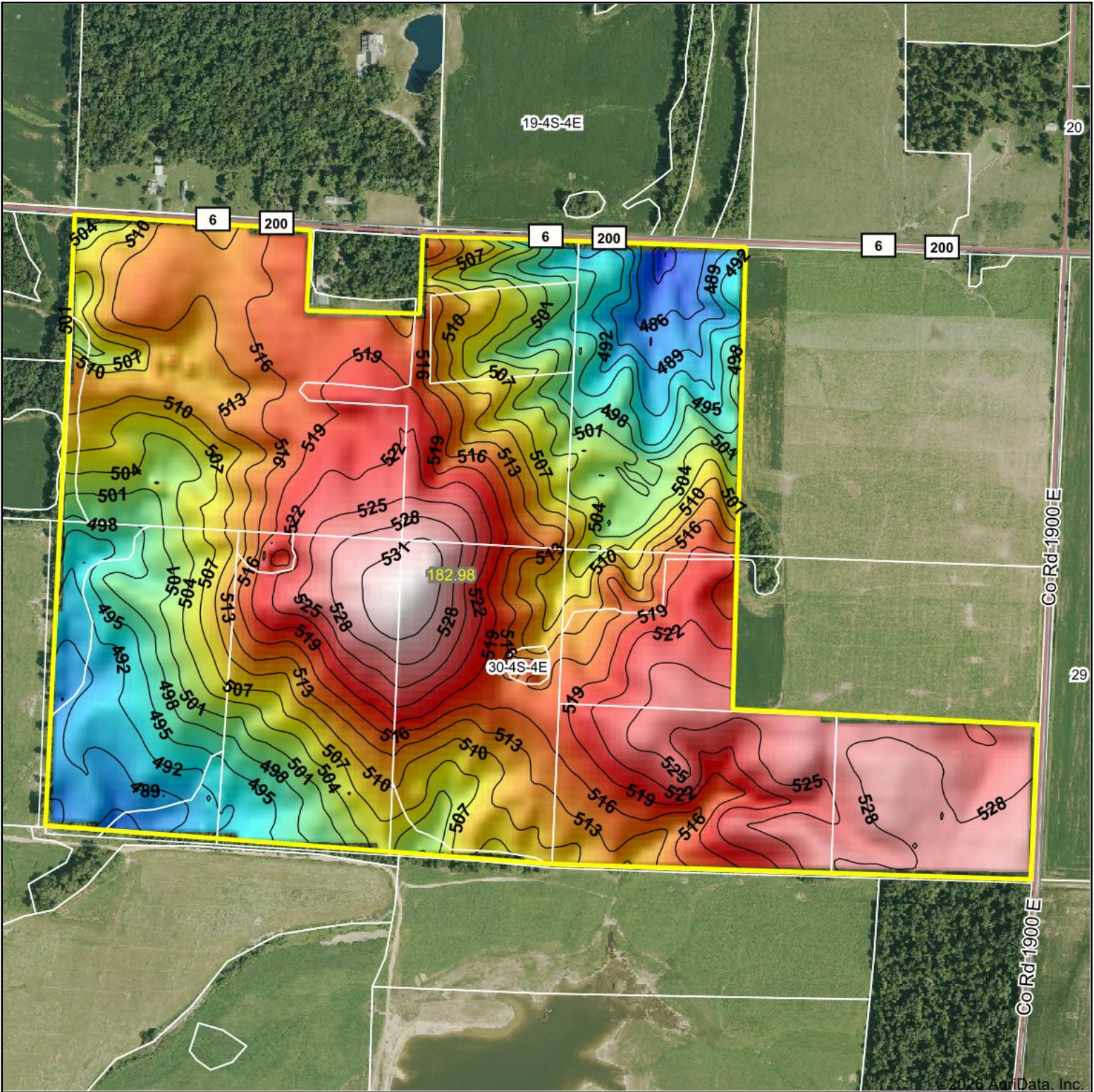
6/2/2026

30-4S-4E
Jefferson County
Illinois

Boundary Center: 38° 9' 5.5, -88° 48' 12.11

Field borders provided by Farm Service Agency as of 5/21/2008.

Topography Hillshade



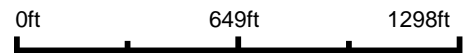
Maps Provided By:



© AgriData, Inc. 2025 www.AgriDataInc.com

Field borders provided by Farm Service Agency as of 5/21/2008.

Source: USGS 10 meter dem
 Interval(ft): 3
 Min: 479.1
 Max: 534.5
 Range: 55.4
 Average: 511.4
 Standard Deviation: 12.07 ft

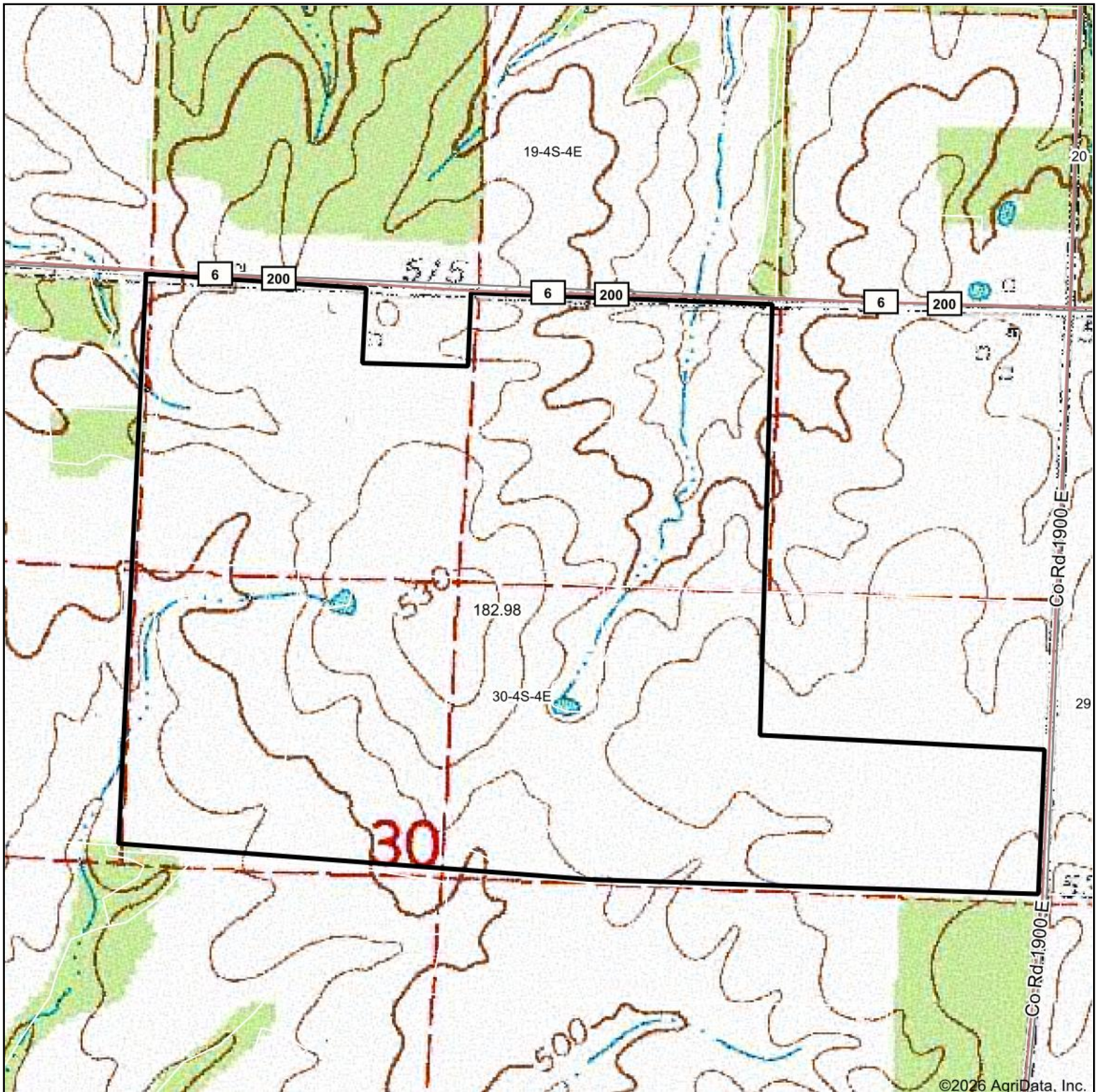


6/2/2026

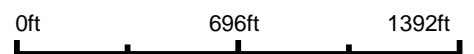
30-4S-4E
Jefferson County
Illinois

Boundary Center: 38° 9' 5.5, -88° 48' 12.11

Topography Map



Map Center: 38° 9' 7.04, -88° 48' 14.24



30-4S-4E
Jefferson County
Illinois



6/2/2026



Maps Provided By:



© AgriData, Inc. 2025

www.AgridataInc.com

Field borders provided by Farm Service Agency as of 5/21/2008.