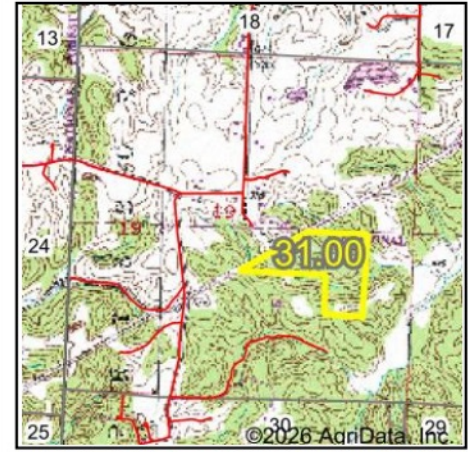
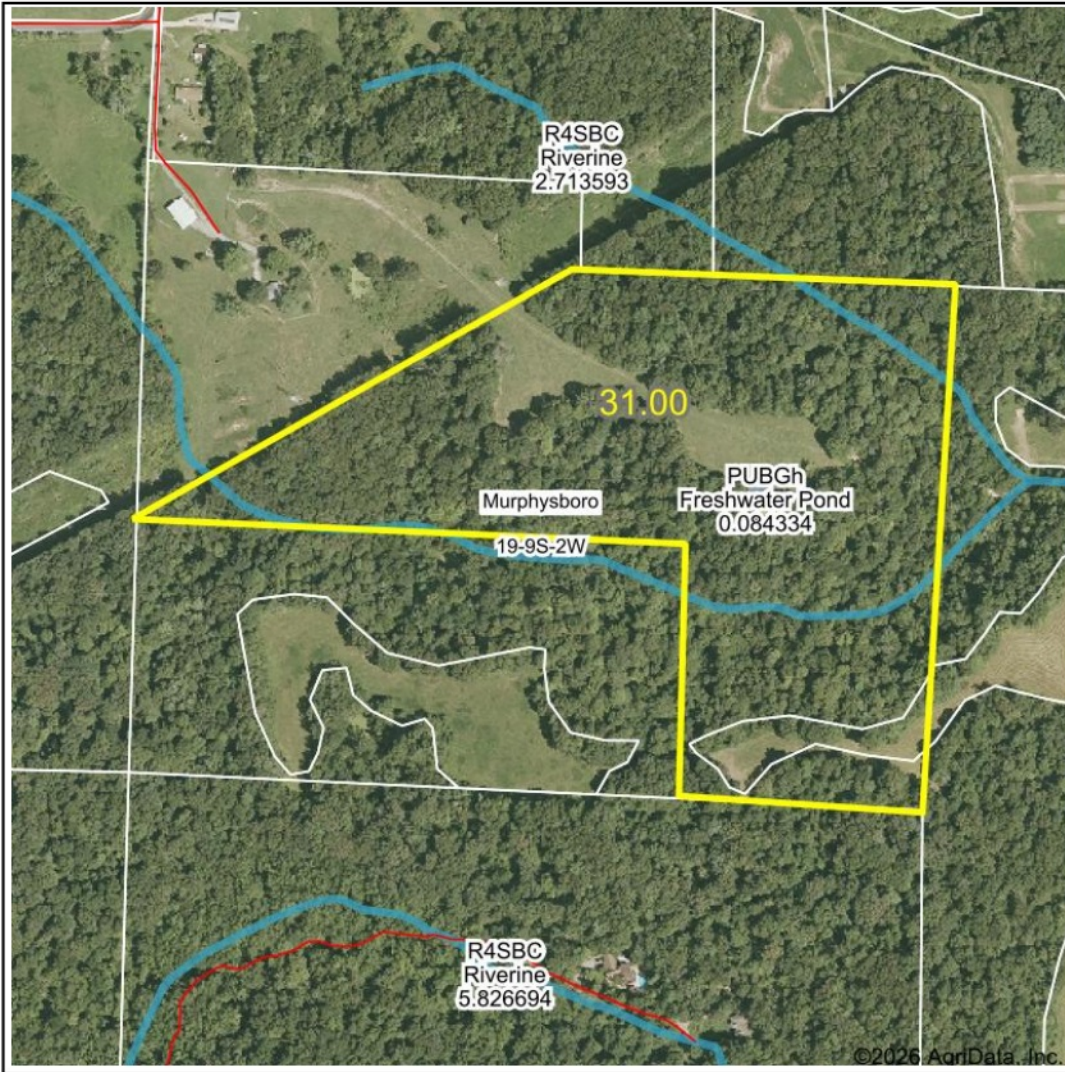


# Wetlands Map



State: **Illinois**  
 Location: **19-9S-2W**  
 County: **Jackson**  
 Township: **Murphysboro**  
 Date: **4/22/2026**



Classification Code	Type	Acres
R4SBC	Riverine	0.74
PUBGh	Freshwater Pond	0.08
Total Acres		0.82

Data Source: National Wetlands Inventory website. U.S. DoI, Fish and Wildlife Service, Washington, D.C. <http://www.fws.gov/wetlands/>