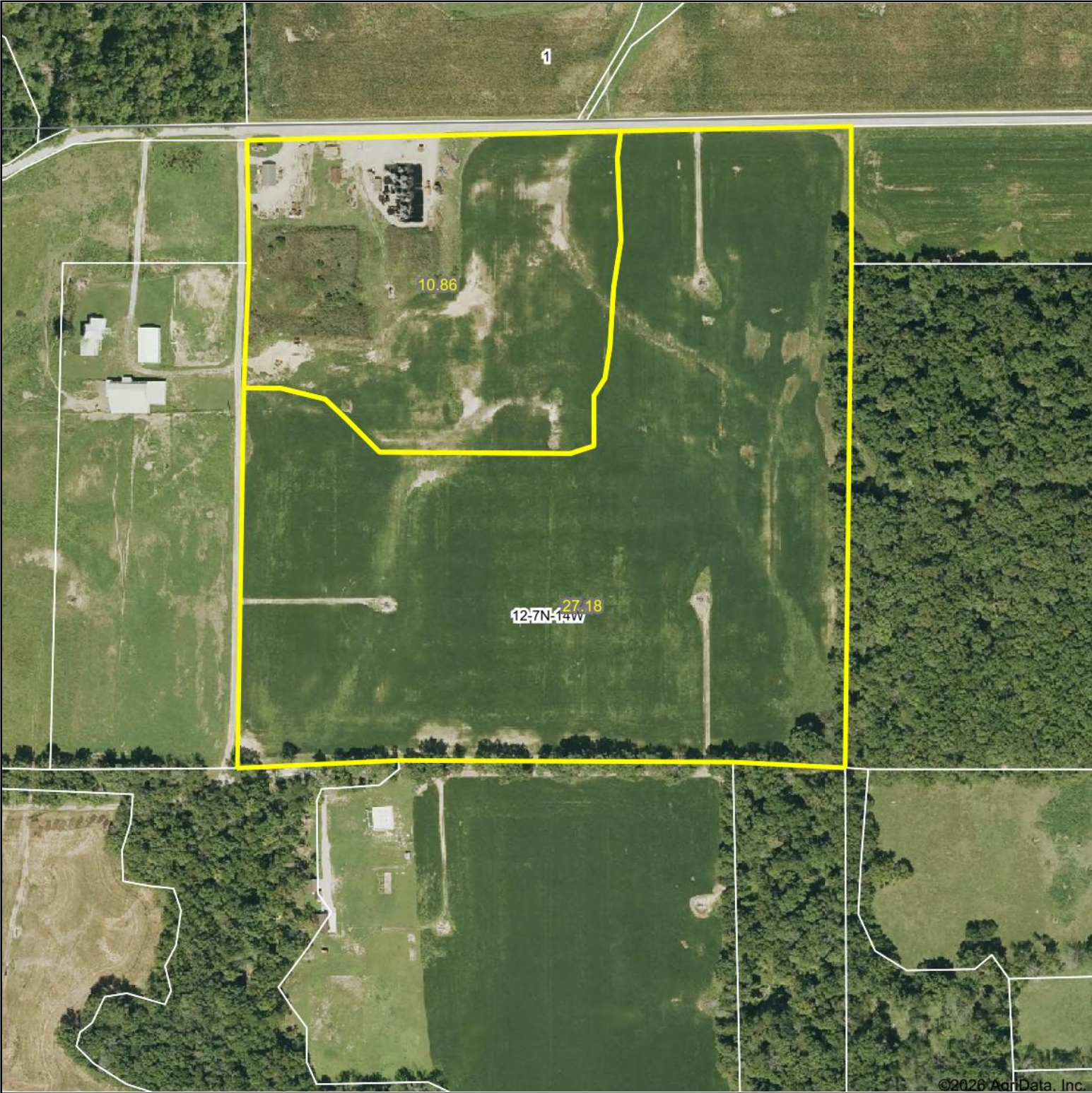


Aerial Map



©2026 AgriData, Inc.

Boundary Center: 39° 4' 10.01, -87° 55' 2.26



12-7N-14W
Crawford County
Illinois



1/28/2026



Maps Provided By:

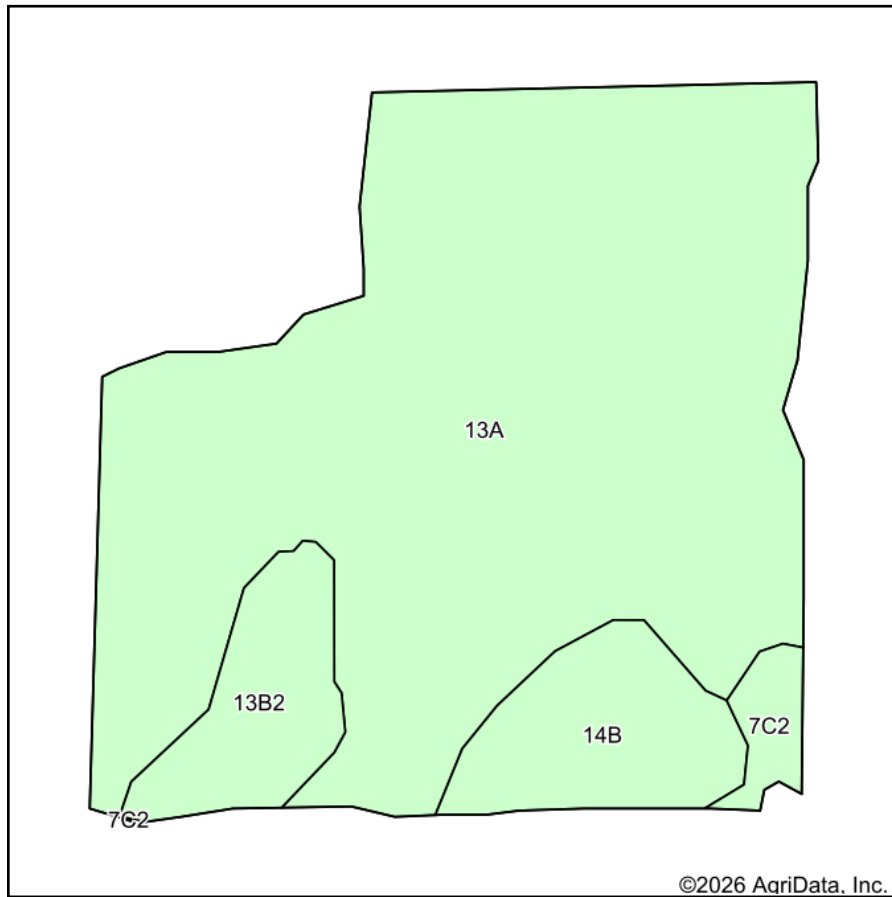


© AgriData, Inc. 2025

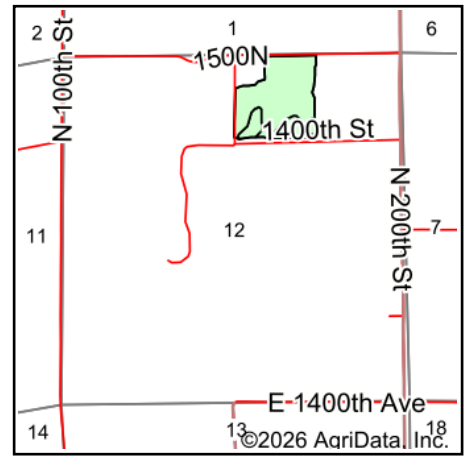
www.AgriDataInc.com

Field borders provided by Farm Service Agency as of 5/21/2008.

Soils Map



Soils data provided by USDA and NRCS.



State: **Illinois**
 County: **Crawford**
 Location: **12-7N-14W**
 Township: **Oblong**
 Acres: **30.83**
 Date: **1/28/2026**



Maps Provided By:



Area Symbol: IL033, Soil Area Version: 23

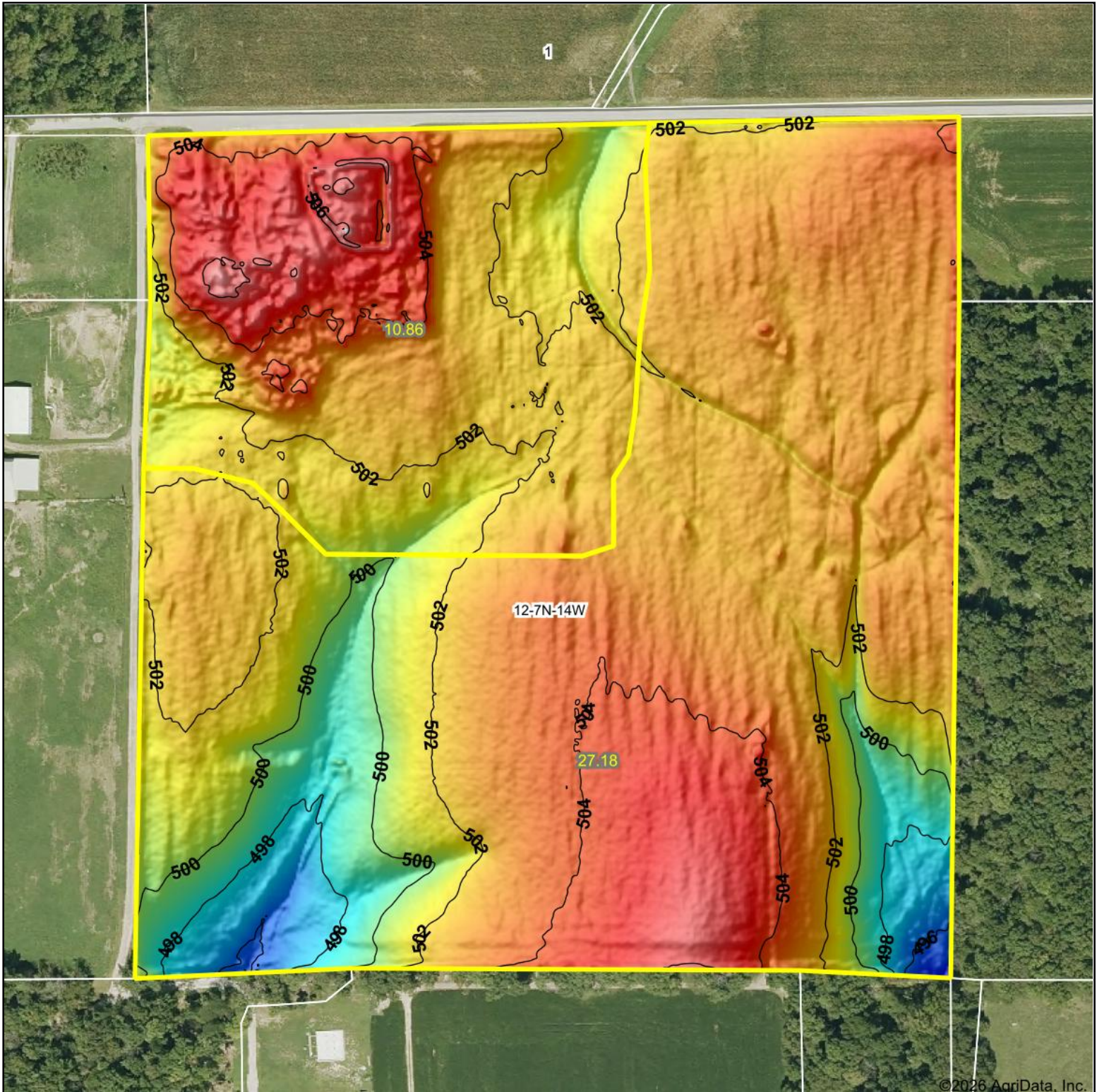
Code	Soil Description	Acres	Percent of field	Corn Bu/A	Soybeans Bu/A	Wheat Bu/A	Crop productivity index for optimum management
13A	Bluford silt loam, 0 to 2 percent slopes	25.06	81.3%	136	44	55	101
**14B	Ava silt loam, 2 to 5 percent slopes	2.81	9.1%	**134	**44	**54	**99
**13B2	Bluford silt loam, 2 to 5 percent slopes, eroded	2.31	7.5%	**129	**1	**1	**96
**7C2	Atlas silt loam, 5 to 10 percent slopes, eroded	0.65	2.1%	**104	**36	**41	**80
Weighted Average				134.6	40.6	50.6	100

Table: Optimum Crop Productivity Ratings for Illinois Soil EFOTG are sourced from Bulletin 811 calculated Map Unit Base Yield Indices, and adjusted (Adj) for slope, erosion, flooding, and surface texture. Publication Date: 02-08-2023

Crop yields and productivity (B811 EFOTG) are maintained at the following USDA web site: 2023 Illinois Soil Productivity and Yield Indices: <https://efotg.sc.egov.usda.gov/#/state/IL/documents/section=2&folder=52809>

** Base indexes from Bulletin 811 adjusted for slope, erosion, flooding, and surface texture according to the Il. Soils EFOTG

Topography Hillshade



©2026 AgriData, Inc.



Source: USGS 1 meter dem

Interval(ft): 2

Min: 494.8

Max: 508.1

Range: 13.3

Average: 502.3

Standard Deviation: 1.8 ft



1/28/2026

12-7N-14W
Crawford County
Illinois

Boundary Center: 39° 4' 10.01, -87° 55' 2.26



Maps Provided By:



© AgriData, Inc. 2025

www.AgriDataInc.com

Field borders provided by Farm Service Agency as of 5/21/2008.