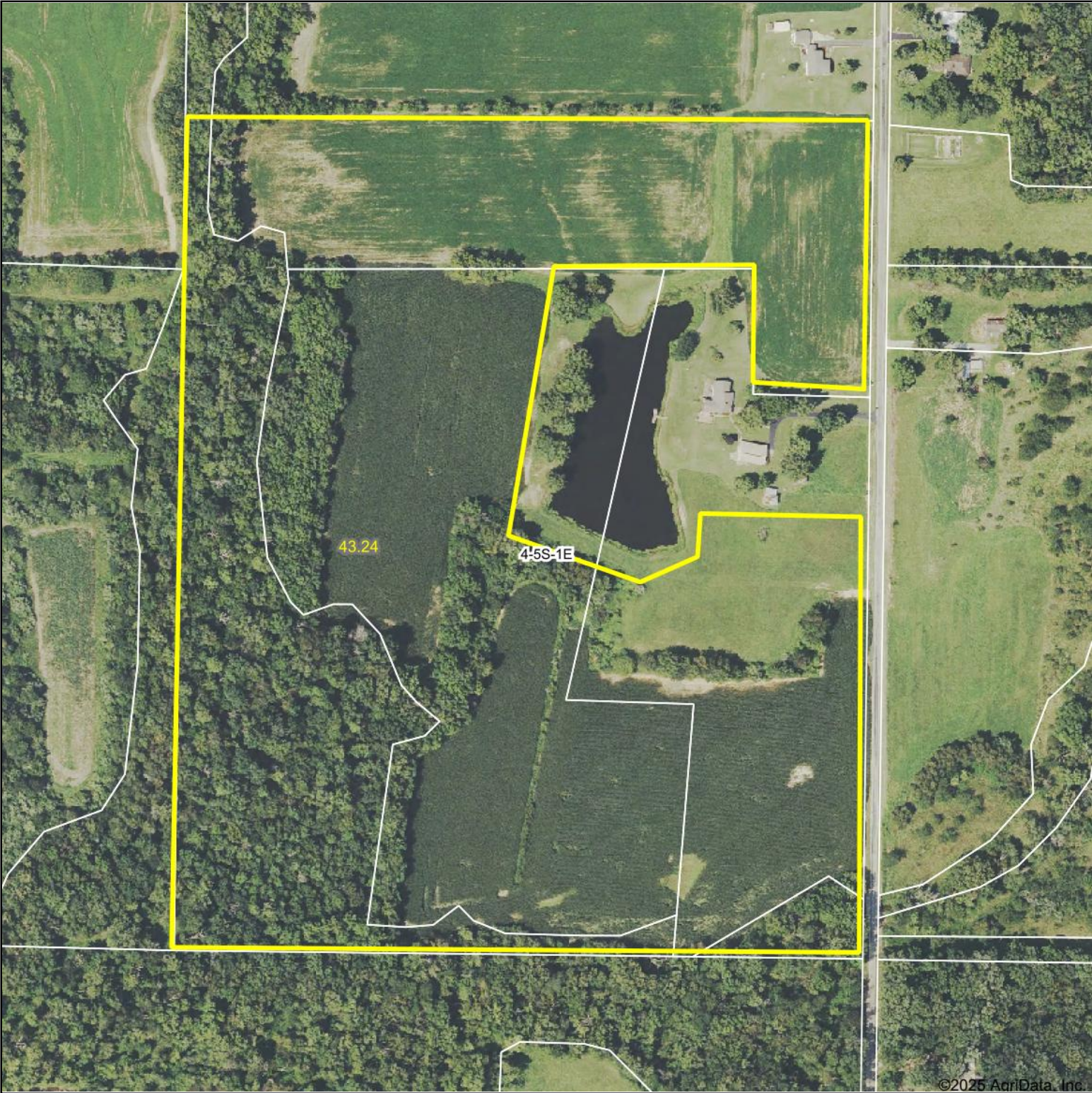


Aerial Map



©2025 AgriData, Inc.

Boundary Center: 38° 7' 4.96, -89° 6' 29.48



4-5S-1E  
Franklin County  
Illinois

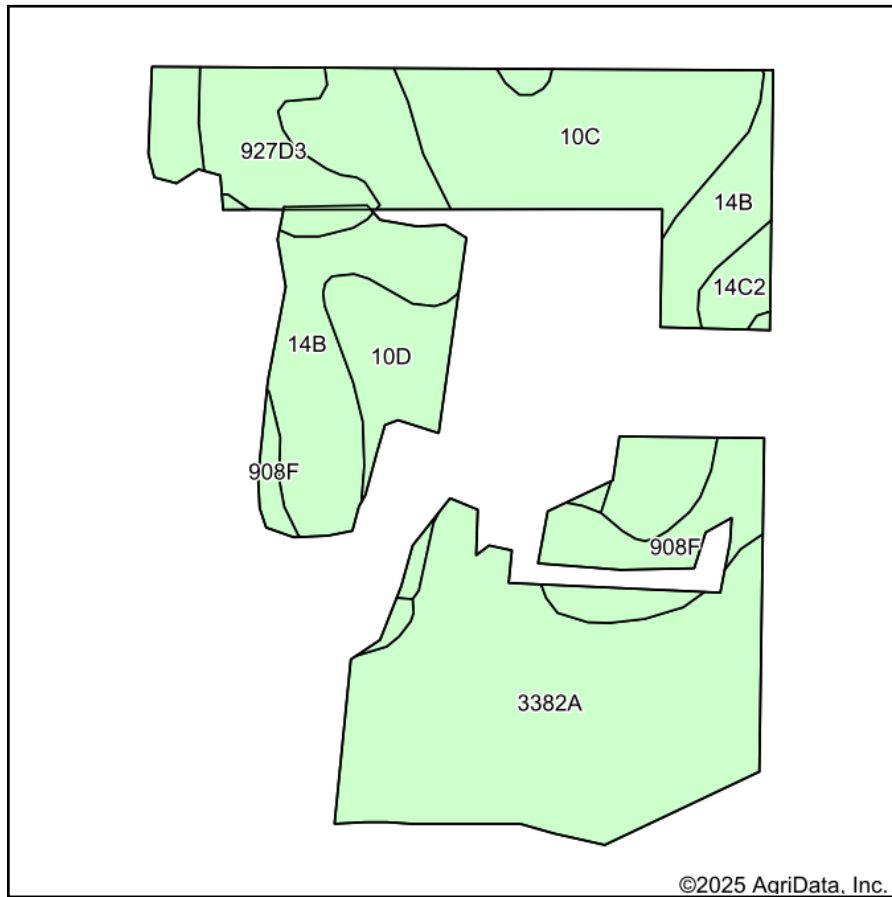


Maps Provided By:  
 **surety**<sup>®</sup>  
CUSTOMIZED ONLINE MAPPING  
© AgriData, Inc. 2025      www.AgriDataInc.com

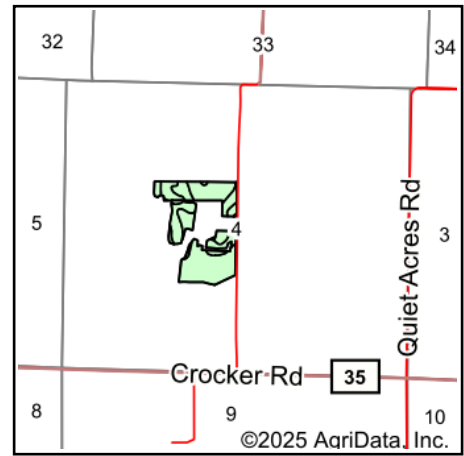
Field borders provided by Farm Service Agency as of 5/21/2008.

12/4/2025

# Soils Map



Soils data provided by USDA and NRCS.



State: **Illinois**  
 County: **Franklin**  
 Location: **4-5S-1E**  
 Township: **Goode**  
 Acres: **27.22**  
 Date: **12/4/2025**



Maps Provided By:



Area Symbol: IL055, Soil Area Version: 19

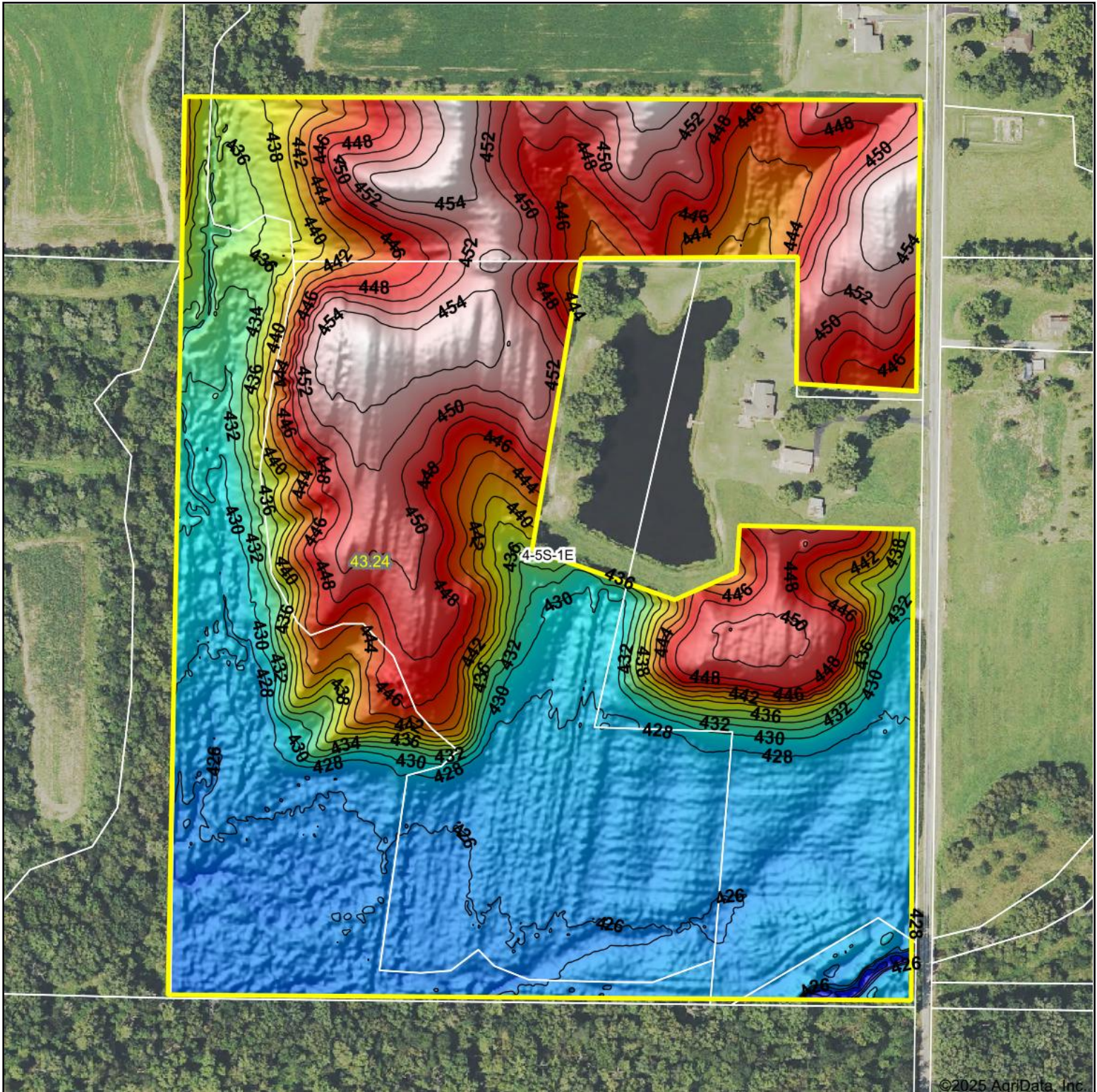
Code	Soil Description	Acres	Percent of field	Corn Bu/A	Soybeans Bu/A	Wheat Bu/A	Crop productivity index for optimum management
**3382A	Belknap silt loam, 0 to 2 percent slopes, frequently flooded	10.13	37.2%	**140	**47	**57	**105
**14B	Ava silt loam, 2 to 5 percent slopes	6.58	24.2%	**134	**44	**54	**99
**10C	Plumfield silty clay loam, 5 to 10 percent slopes	4.33	15.9%	**79	**26	**30	**60
**908F	Hickory-Kell silt loams, 18 to 35 percent slopes	2.17	8.0%	**90	**30	**36	**69
**927D3	Blair-Atlas silty clay loams, 10 to 18 percent slopes, severely eroded	1.80	6.6%	**86	**29	**34	**65
**10D	Plumfield silty clay loam, 10 to 18 percent slopes	1.69	6.2%	**72	**23	**27	**54
**14C2	Ava silt loam, 5 to 10 percent slopes, eroded	0.52	1.9%	**120	**39	**49	**89
Weighted Average				116.7	38.7	46.8	87.4

**Table: Optimum Crop Productivity Ratings for Illinois Soil EFOTG are sourced from Bulletin 811 calculated Map Unit Base Yield Indices, and adjusted (Adj) for slope, erosion, flooding, and surface texture.** Publication Date: 02-08-2023

Crop yields and productivity (B811 EFOTG) are maintained at the following USDA web site: 2023 Illinois Soil Productivity and Yield Indices: <https://efotg.sc.egov.usda.gov/#/state/IL/documents/section=2&folder=52809>

\*\* Base indexes from Bulletin 811 adjusted for slope, erosion, flooding, and surface texture according to the Il. Soils EFOTG

# Topography Hillshade



©2025 AgriData, Inc.



Source: USGS 1 meter dem

Interval(ft): 2

Min: 421.2

Max: 455.8

Range: 34.6

Average: 437.7

Standard Deviation: 10.53 ft



12/4/2025

**4-S-1E**  
**Franklin County**  
**Illinois**

Boundary Center: 38° 7' 4.96, -89° 6' 29.48



Maps Provided By:



© AgriData, Inc. 2025

www.AgriDataInc.com

Field borders provided by Farm Service Agency as of 5/21/2008.