

Land For Sale - Wayne County IL 254+- Acres

Boundary Lines
Approximate

South

Co. Rd. 1500 N

Tract 1
134+- Acres

SOLD T1 - \$550,000 / T2 - \$374,400 / T3 - \$215,000

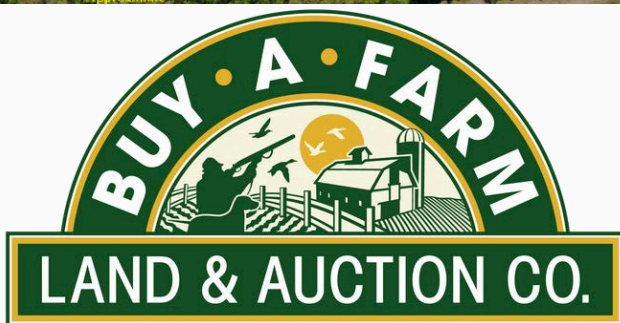
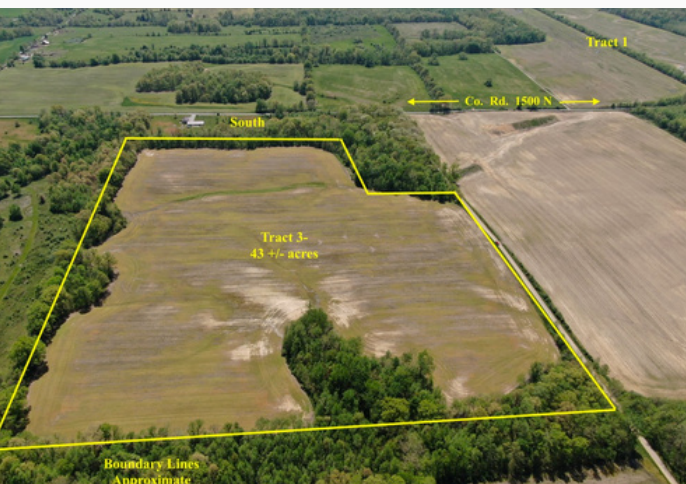


Address: Co Rd 1650 N & Co Rd 1600 N, Johnsonville, IL
Tract 1: \$603,000 / Tract 2: \$390,000 / Tract 3: \$215,000

ABOUT THIS PROPERTY:

254+- ACRES OFFERED IN 3 TRACTS WITH MOST OF THE LAND BEING TILLABLE. ALL 3 TRACTS ARE IN WAYNE COUNTY IL WITHIN BERRY AND INDIAN PRAIRIE TOWNSHIPS, SOUTH OF JOHNSONVILLE IL.

- **TRACT 1 - 134+- ACRES**
- **CONSISTING OF 134+- ACRES WITH 112 AC TILLABLE.**
- **PRODUCTIVITY INDEX (PI) IS 97.69.**
- **TIMBER AREAS OFFER DEER AND TURKEY HUNTING.**
-
- **TRACT 2 - 78+- ACRES**
- **CONSISTING OF 78+- ACRES WITH 66.67 TILLABLE.**
- **PRODUCTIVITY INDEX (PI) IS 95.3.**
-
- **TRACT 3 - 43+- ACRES**
- **CONSISTING OF 43+- ACRES WITH 38.50 TILLABLE; REMAINDER IN TIMBER.**
- **PRODUCTIVITY INDEX (PI) IS 89.3.**



BUYAFARM.COM

**Main Office: Sparta IL
618-443-1998**



**CONTACT
BROKER
JOE CORSO**
Main Office
Sparta IL