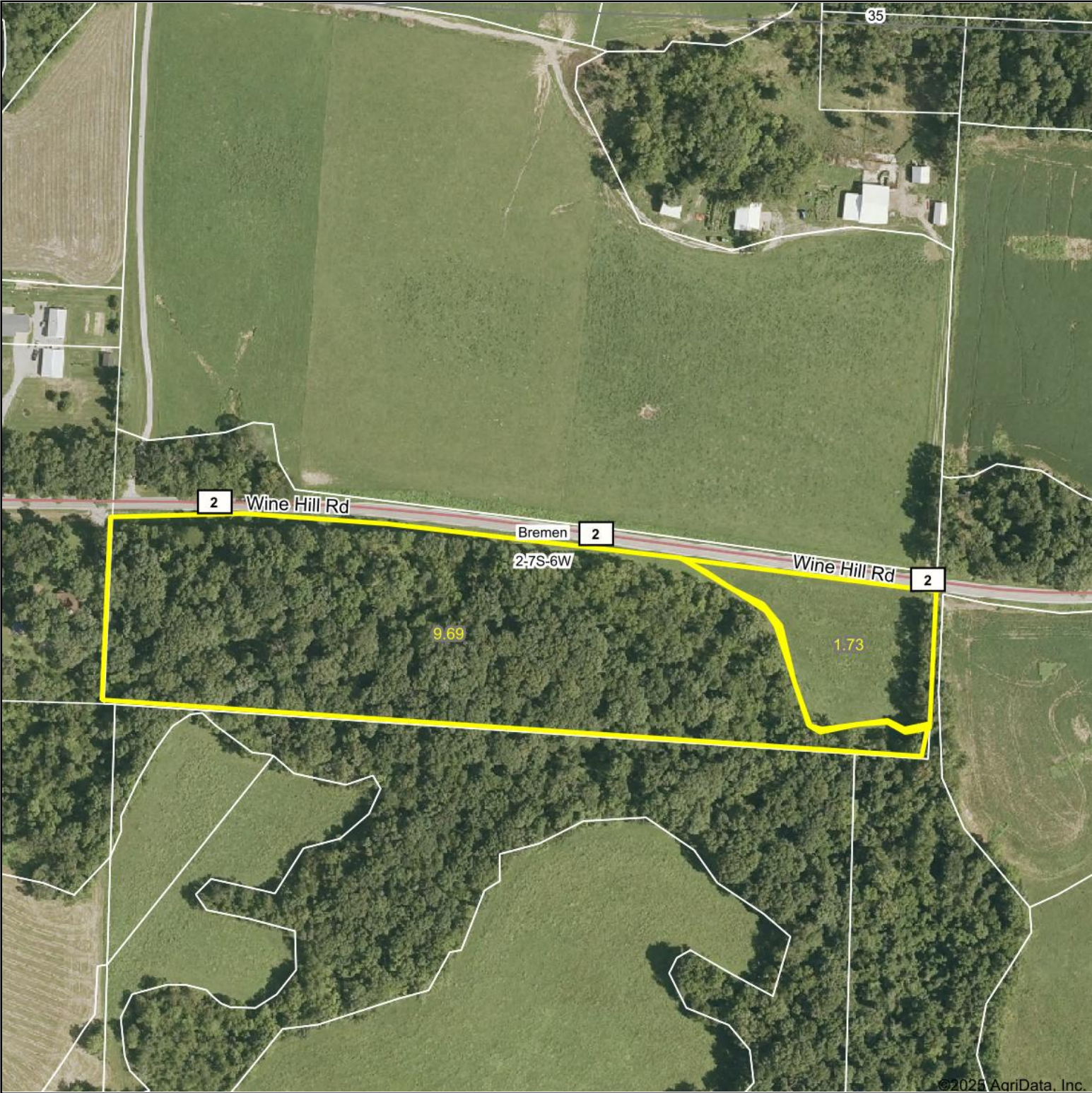
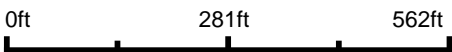


Aerial Map



©2025 AgriData, Inc.

Boundary Center: 37° 57' 12.35, -89° 43' 50.08



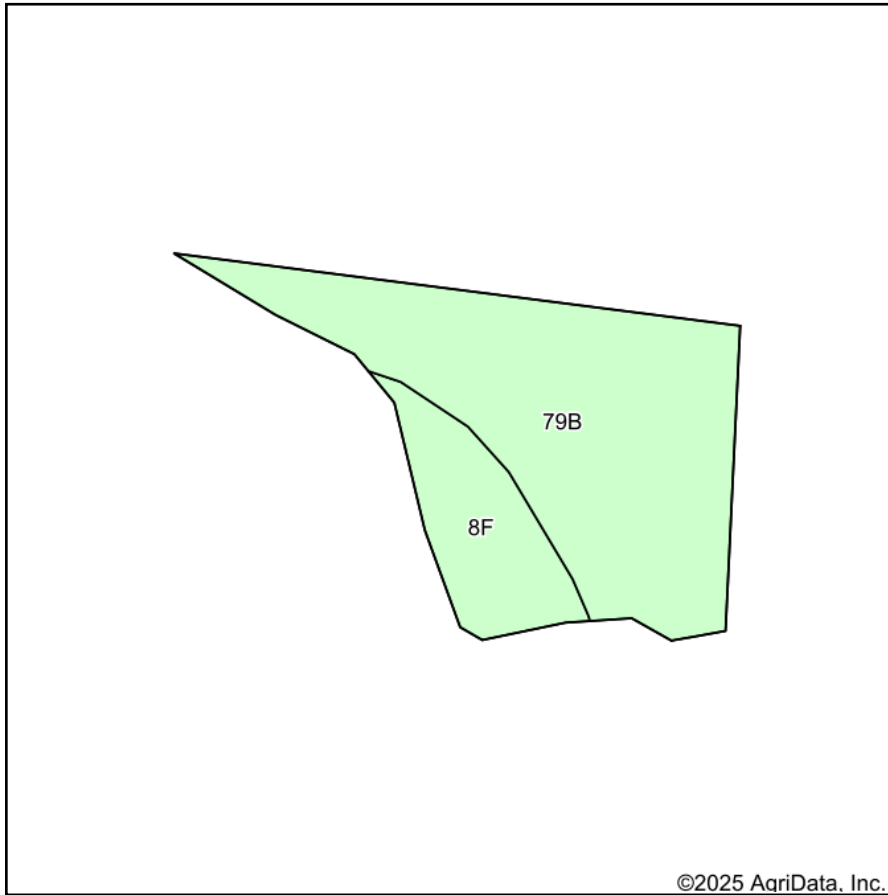
Maps Provided By:
 **surety**
CUSTOMIZED ONLINE MAPPING
© AgriData, Inc. 2023 www.AgriDataInc.com

2-7S-6W
Randolph County
Illinois

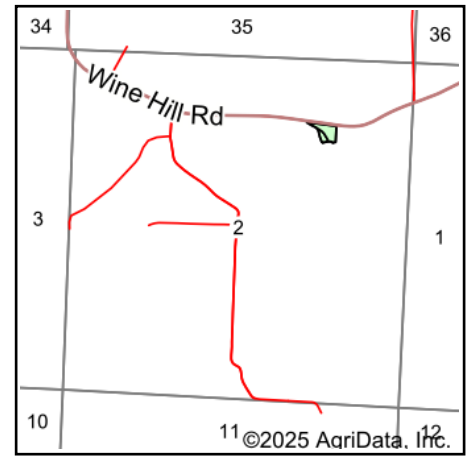


10/23/2025

Soils Map



Soils data provided by USDA and NRCS.



State: **Illinois**
 County: **Randolph**
 Location: **2-7S-6W**
 Township: **Bremen**
 Acres: **1.73**
 Date: **10/23/2025**



Maps Provided By:



Area Symbol: IL157, Soil Area Version: 20							
Code	Soil Description	Acres	Percent of field	Corn Bu/A	Soybeans Bu/A	Wheat Bu/A	Crop productivity index for optimum management
**79B	Menfro silt loam, 2 to 5 percent slopes	1.36	78.6%	**162	**50	**62	**118
**8F	Hickory silt loam, 18 to 35 percent slopes	0.37	21.4%	**89	**30	**36	**68
Weighted Average				146.4	45.7	56.4	107.3

Table: Optimum Crop Productivity Ratings for Illinois Soil EFOTG are sourced from Bulletin 811 calculated Map Unit Base Yield Indices, and adjusted (Adj) for slope, erosion, flooding, and surface texture. Publication Date: 02-08-2023

Crop yields and productivity (B811 EFOTG) are maintained at the following USDA web site: 2023 Illinois Soil Productivity and Yield Indices:

<https://efotg.sc.egov.usda.gov/#/state/IL/documents/section=2&folder=52809>

** Base indexes from Bulletin 811 adjusted for slope, erosion, flooding, and surface texture according to the Il. Soils EFOTG



 Boundary