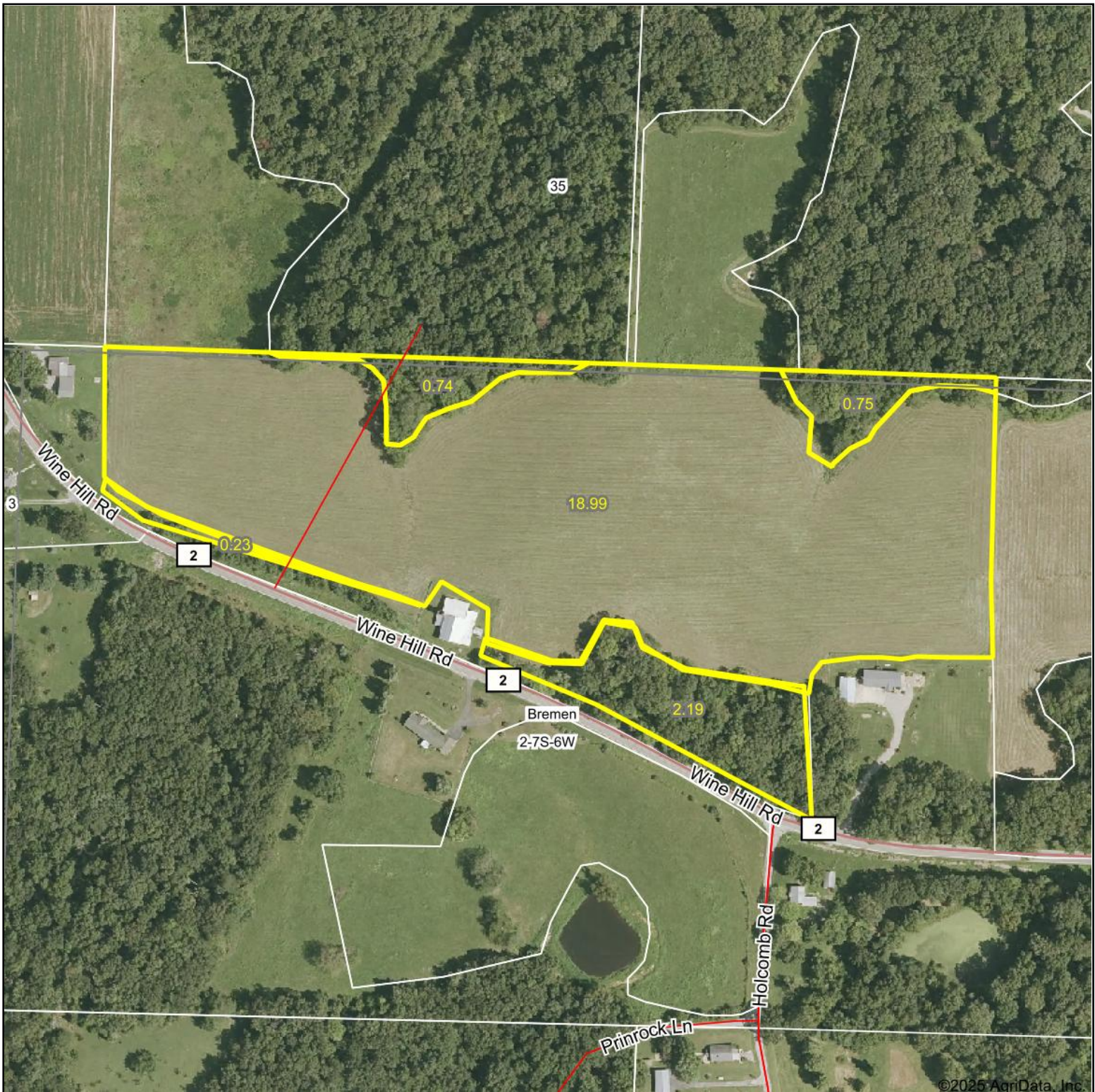


Aerial Map



©2025 AgriData, Inc.



Maps Provided By:



surety®
CUSTOMIZED ONLINE MAPPING

© AgriData, Inc. 2023

www.AgriDataInc.com

Boundary Center: 37° 57' 19.43, -89° 44' 18.14

0ft 309ft 618ft

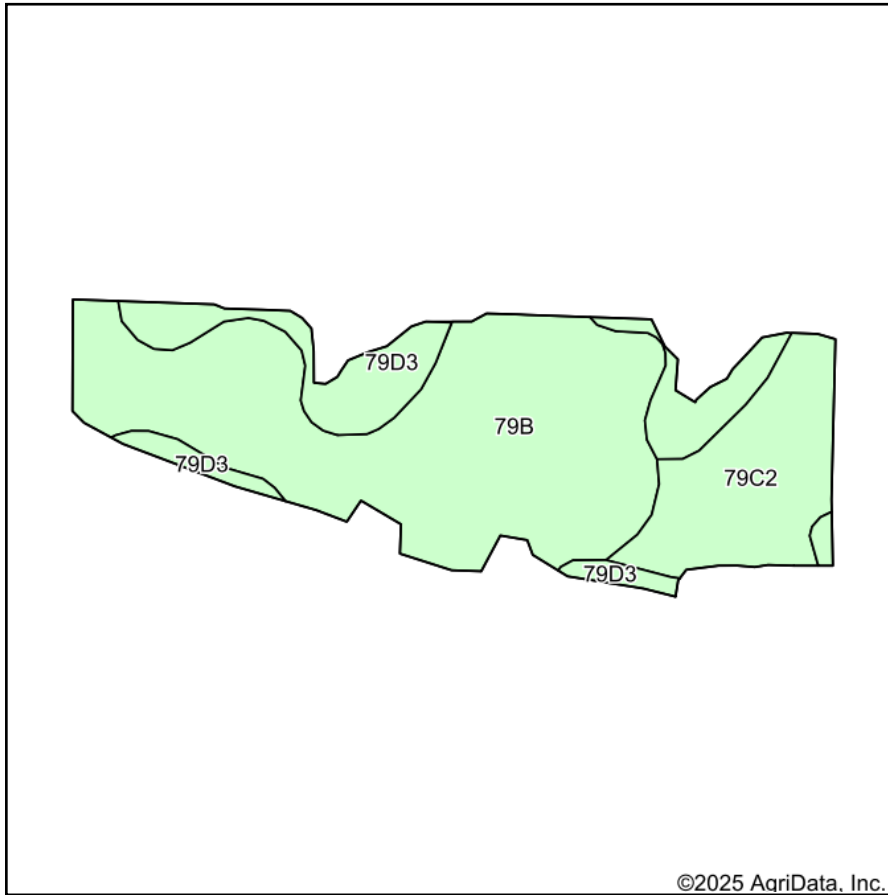
2-7S-6W
Randolph County
Illinois



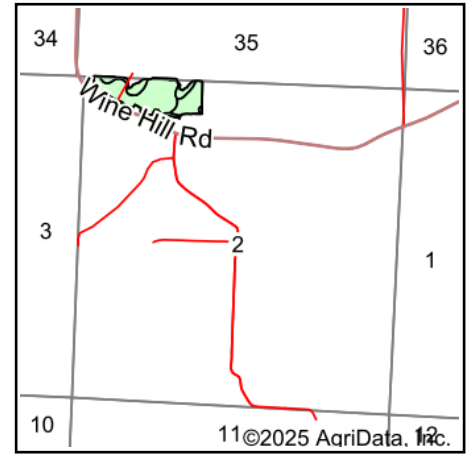
10/23/2025

Field borders provided by Farm Service Agency as of 5/21/2008.

Soils Map



Soils data provided by USDA and NRCS.



State: **Illinois**
 County: **Randolph**
 Location: **2-7S-6W**
 Township: **Bremen**
 Acres: **18.99**
 Date: **10/23/2025**



Maps Provided By:



Area Symbol: IL157, Soil Area Version: 20

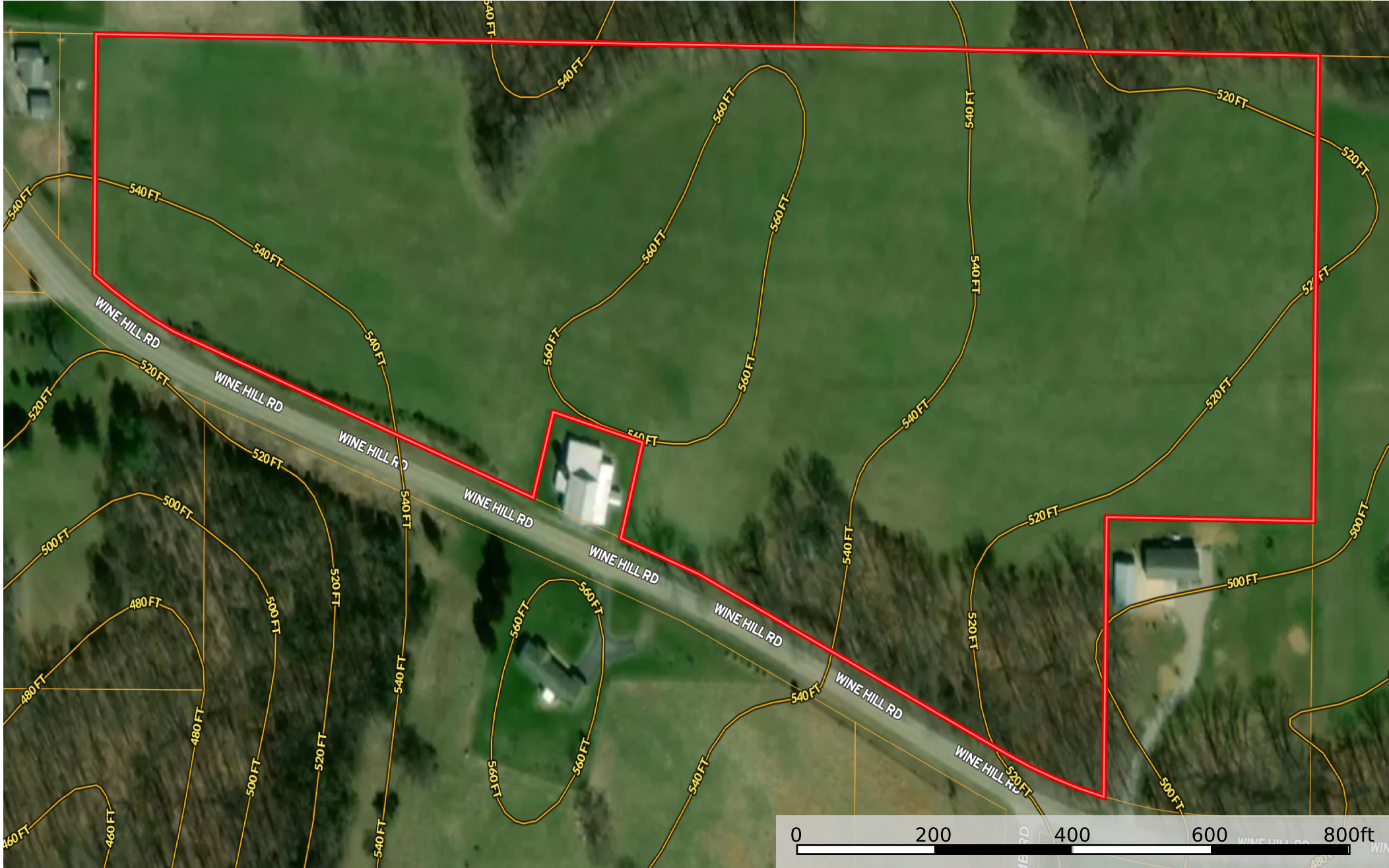
Code	Soil Description	Acres	Percent of field	Corn Bu/A	Soybeans Bu/A	Wheat Bu/A	Crop productivity index for optimum management
**79B	Menfro silt loam, 2 to 5 percent slopes	11.64	61.3%	**162	**50	**62	**118
**79C2	Menfro silt loam, 5 to 10 percent slopes, eroded	3.75	19.7%	**153	**47	**59	**112
**79D3	Menfro silty clay loam, 10 to 18 percent slopes, severely eroded	3.60	19.0%	**130	**40	**50	**95
Weighted Average				154.2	47.5	59.1	112.5

Table: Optimum Crop Productivity Ratings for Illinois Soil EFOTG are sourced from Bulletin 811 calculated Map Unit Base Yield Indices, and adjusted (Adj) for slope, erosion, flooding, and surface texture. Publication Date: 02-08-2023

Crop yields and productivity (B811 EFOTG) are maintained at the following USDA web site: 2023 Illinois Soil Productivity and Yield Indices:

<https://efotg.sc.egov.usda.gov/#/state/IL/documents/section=2&folder=52809>

** Base indexes from Bulletin 811 adjusted for slope, erosion, flooding, and surface texture according to the IL Soils EFOTG



 Boundary