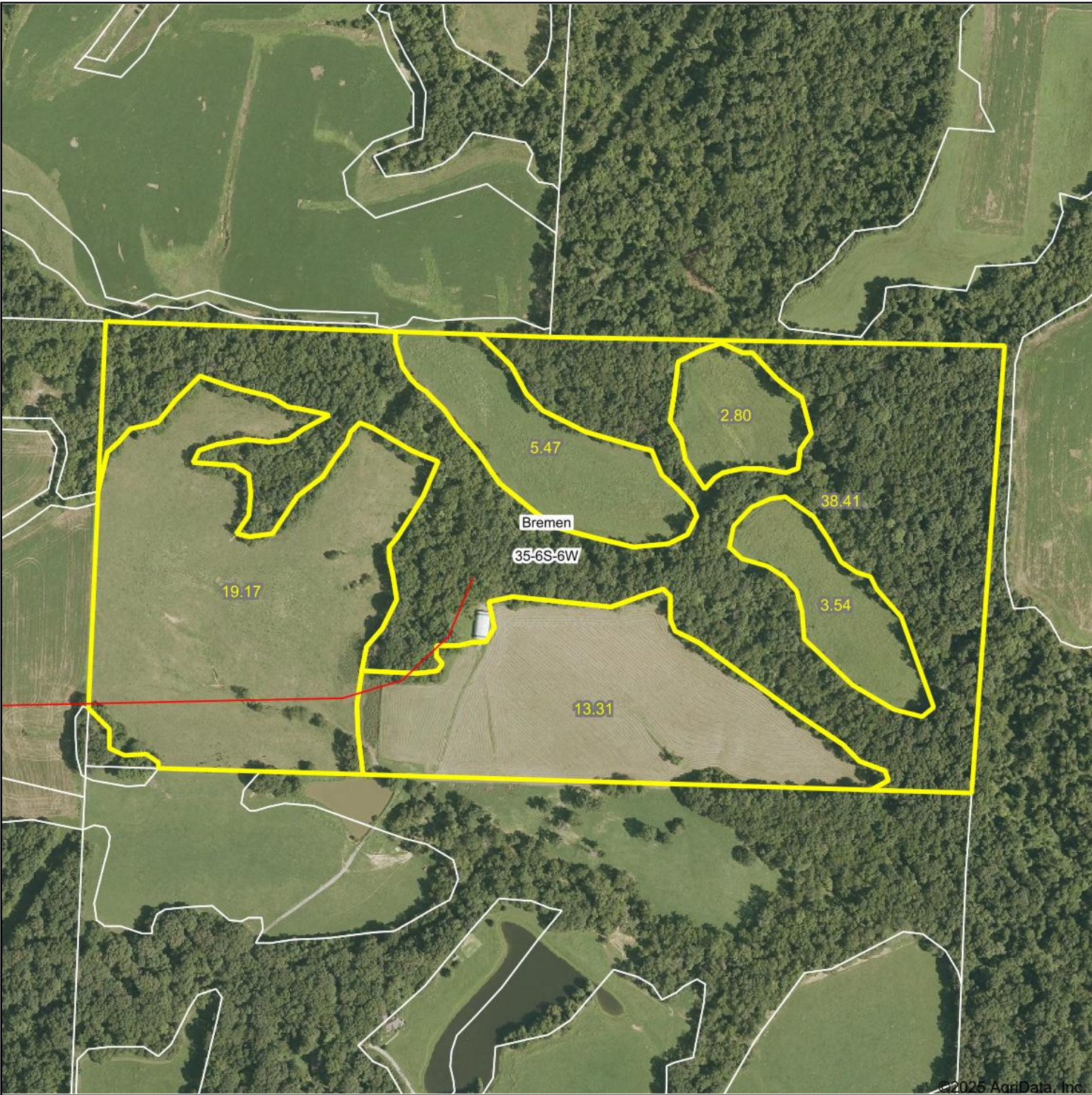


Aerial Map



©2025 AgriData, Inc.

Boundary Center: 37° 57' 43.52, -89° 43' 59.35



Maps Provided By:
 **surety**[®]
CUSTOMIZED ONLINE MAPPING
© AgriData, Inc. 2023 www.AgriDataInc.com

35-6S-6W
Randolph County
Illinois

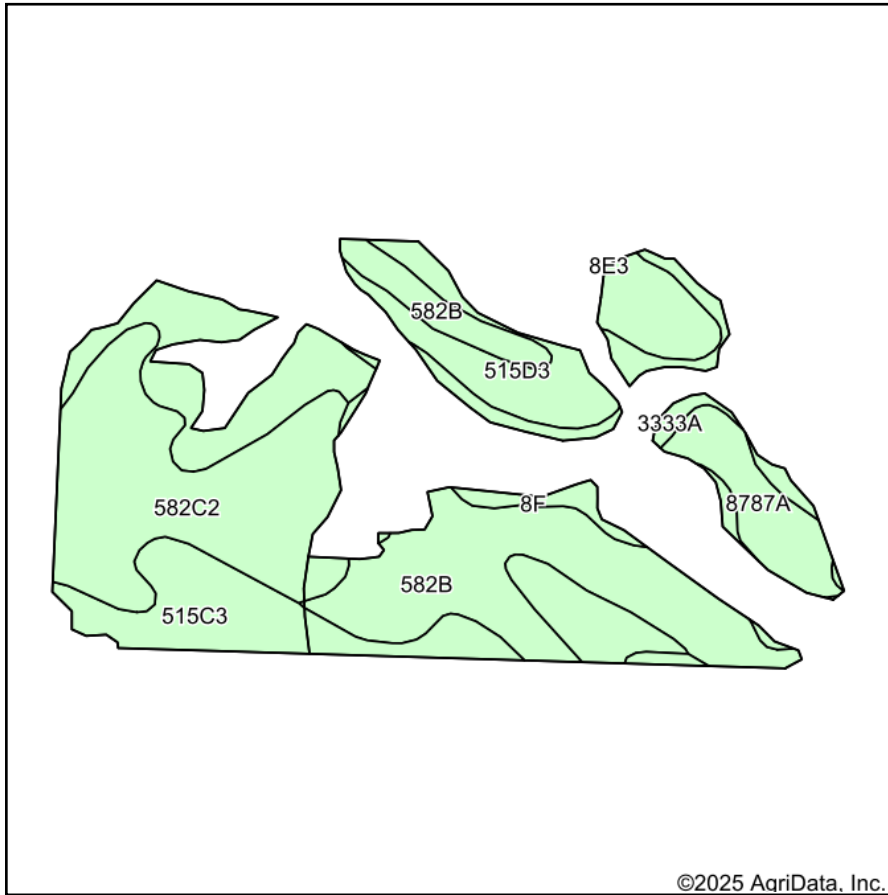
0ft 461ft 921ft



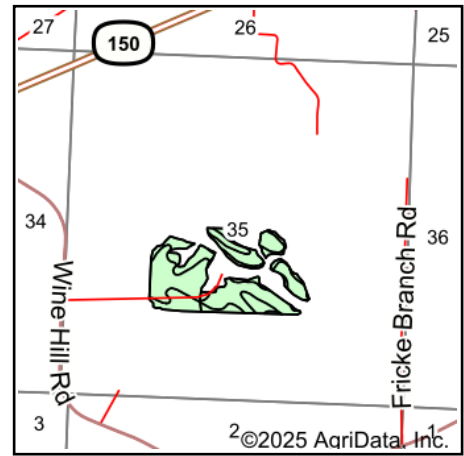
10/23/2025

Field borders provided by Farm Service Agency as of 5/21/2008.

Soils Map



Soils data provided by USDA and NRCS.



State: **Illinois**
 County: **Randolph**
 Location: **35-6S-6W**
 Township: **Bremen**
 Acres: **44.29**
 Date: **10/23/2025**



Maps Provided By:



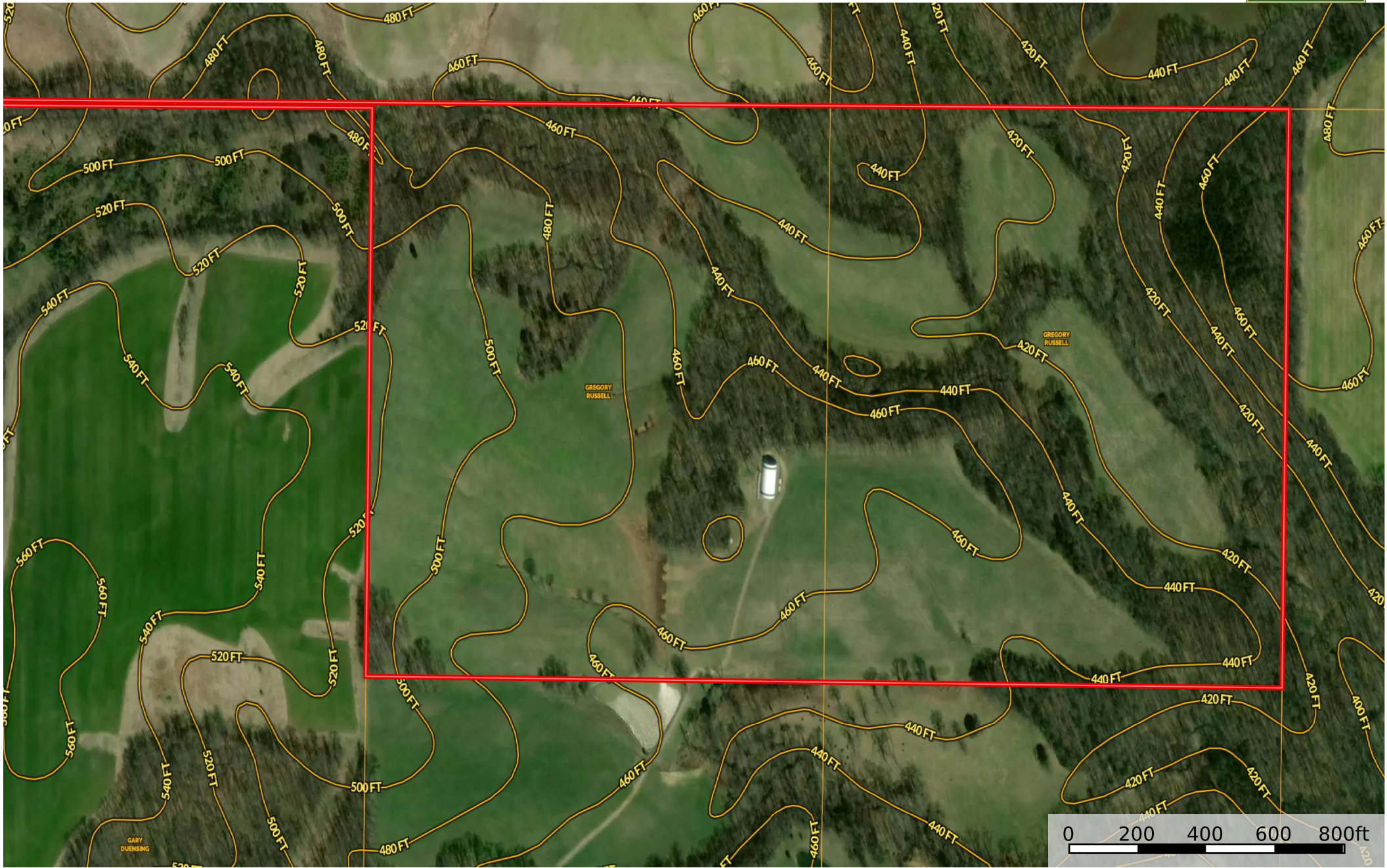
Area Symbol: IL157, Soil Area Version: 20

Code	Soil Description	Acres	Percent of field	Corn Bu/A	Soybeans Bu/A	Wheat Bu/A	Crop productivity index for optimum management
**582C2	Homen silt loam, 5 to 10 percent slopes, eroded	10.90	24.7%	**140	**44	**52	**101
**582B	Homen silt loam, 2 to 5 percent slopes	10.41	23.5%	**149	**47	**55	**108
**515D3	Bunkum silty clay loam, 10 to 18 percent slopes, severely eroded	9.93	22.4%	**115	**40	**44	**87
**515C3	Bunkum silty clay loam, 5 to 10 percent slopes, severely eroded	7.01	15.8%	**126	**43	**48	**95
8787A	Banlic silt loam, 0 to 2 percent slopes, occasionally flooded	2.73	6.2%	142	47	56	106
**3333A	Wakeland silt loam, 0 to 2 percent slopes, frequently flooded	2.10	4.7%	**157	**50	**61	**115
**8F	Hickory silt loam, 18 to 35 percent slopes	1.21	2.7%	**89	**30	**36	**68
Weighted Average				133.8	43.7	50.5	98.6

Table: Optimum Crop Productivity Ratings for Illinois Soil EFOTG are sourced from Bulletin 811 calculated Map Unit Base Yield Indices, and adjusted (Adj) for slope, erosion, flooding, and surface texture. Publication Date: 02-08-2023

Crop yields and productivity (B811 EFOTG) are maintained at the following USDA web site: 2023 Illinois Soil Productivity and Yield Indices: <https://efotg.sc.egov.usda.gov/#/state/IL/documents/section=2&folder=52809>

** Base indexes from Bulletin 811 adjusted for slope, erosion, flooding, and surface texture according to the Il. Soils EFOTG



 Boundary