

Aerial Map



©2025 AgriData, Inc.

Boundary Center: 38° 18' 45.36, -88° 59' 43.27



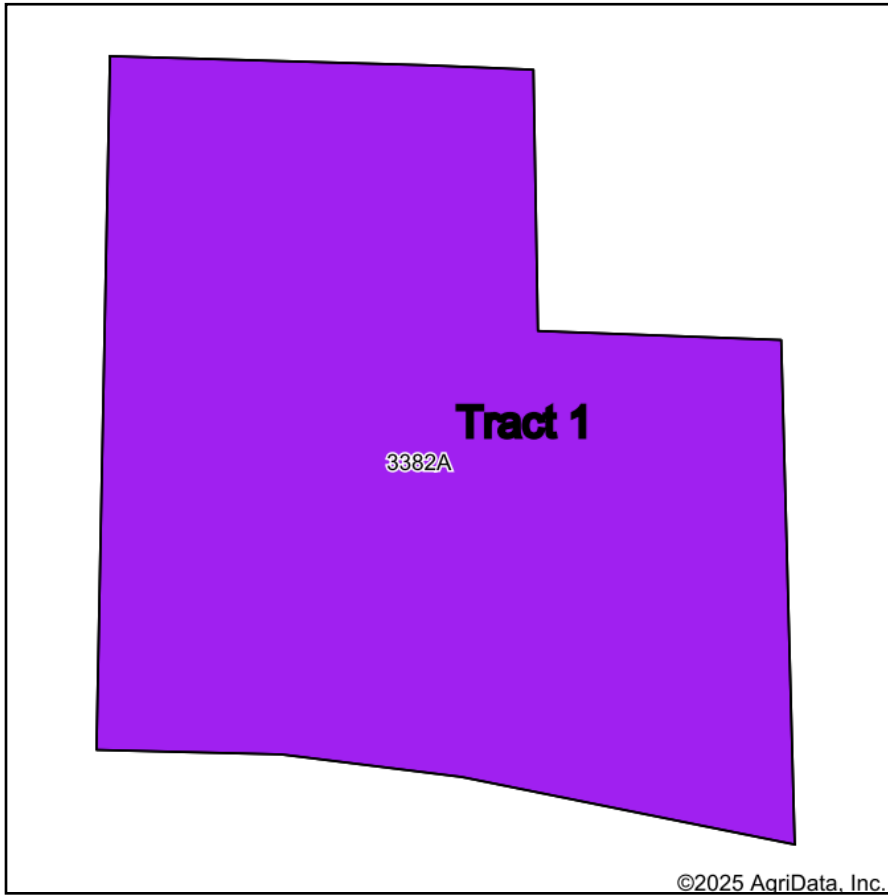
Maps Provided By:
surety
CUSTOMIZED ONLINE MAPPING
© AgriData, Inc. 2023 www.AgriDataInc.com

33-2S-2E
Jefferson County
Illinois

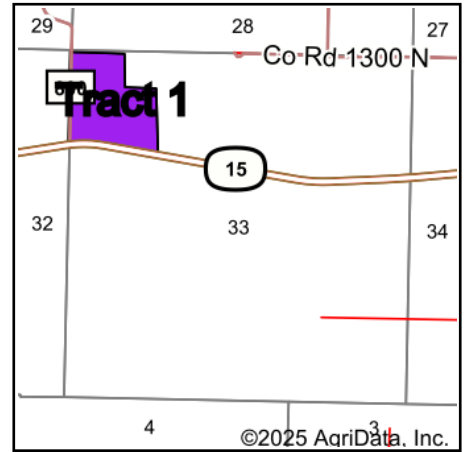


10/20/2025

Soils Map



Soils data provided by USDA and NRCS.



State: **Illinois**
 County: **Jefferson**
 Location: **33-2S-2E**
 Township: **Shiloh**
 Acres: **38.61**
 Date: **10/20/2025**



Maps Provided By:

 © AgriData, Inc. 2023 www.AgriDataInc.com



Area Symbol: IL081, Soil Area Version: 17

Code	Soil Description	Acres	Percent of field	Il. State Productivity Index Legend	Corn Bu/A	Soybeans Bu/A	Wheat Bu/A	Grass-legume hay, T/A	Crop productivity index for optimum management	*n NCCPI Soybeans
**3382A	Belknap silt loam, 0 to 2 percent slopes, frequently flooded	38.61	100.0%		**140	**47	**57	**4.00	**105	67
Weighted Average					140	47	57	4	105	*n 67

Table: Optimum Crop Productivity Ratings for Illinois Soil EFOTG are sourced from Bulletin 811 calculated Map Unit Base Yield Indices, and adjusted (Adj) for slope, erosion, flooding, and surface texture. Publication Date: 01-28-2025

Crop yields and productivity (B811 EFOTG) are maintained at the following USDA web site: 2023 Illinois Soil Productivity and Yield Indices: <https://efotg.sc.egov.usda.gov/#/state/IL/documents/section=2&folder=52809>

** Base indexes from Bulletin 811 adjusted for slope, erosion, flooding, and surface texture according to the Il. Soils EFOTG

e Soils in the well drained group were not rated for grass-legume and are shown with a zero "0".

*n: The aggregation method is "Weighted Average using all components"

Topography Contours



Maps Provided By:



© AgriData, Inc. 2023 www.AgriDataInc.com

Source: USGS 1 meter dem
Interval(ft): 2.0
Min: 432.6
Max: 438.0
Range: 5.4
Average: 434.5
Standard Deviation: 0.72 ft

0ft 296ft 593ft



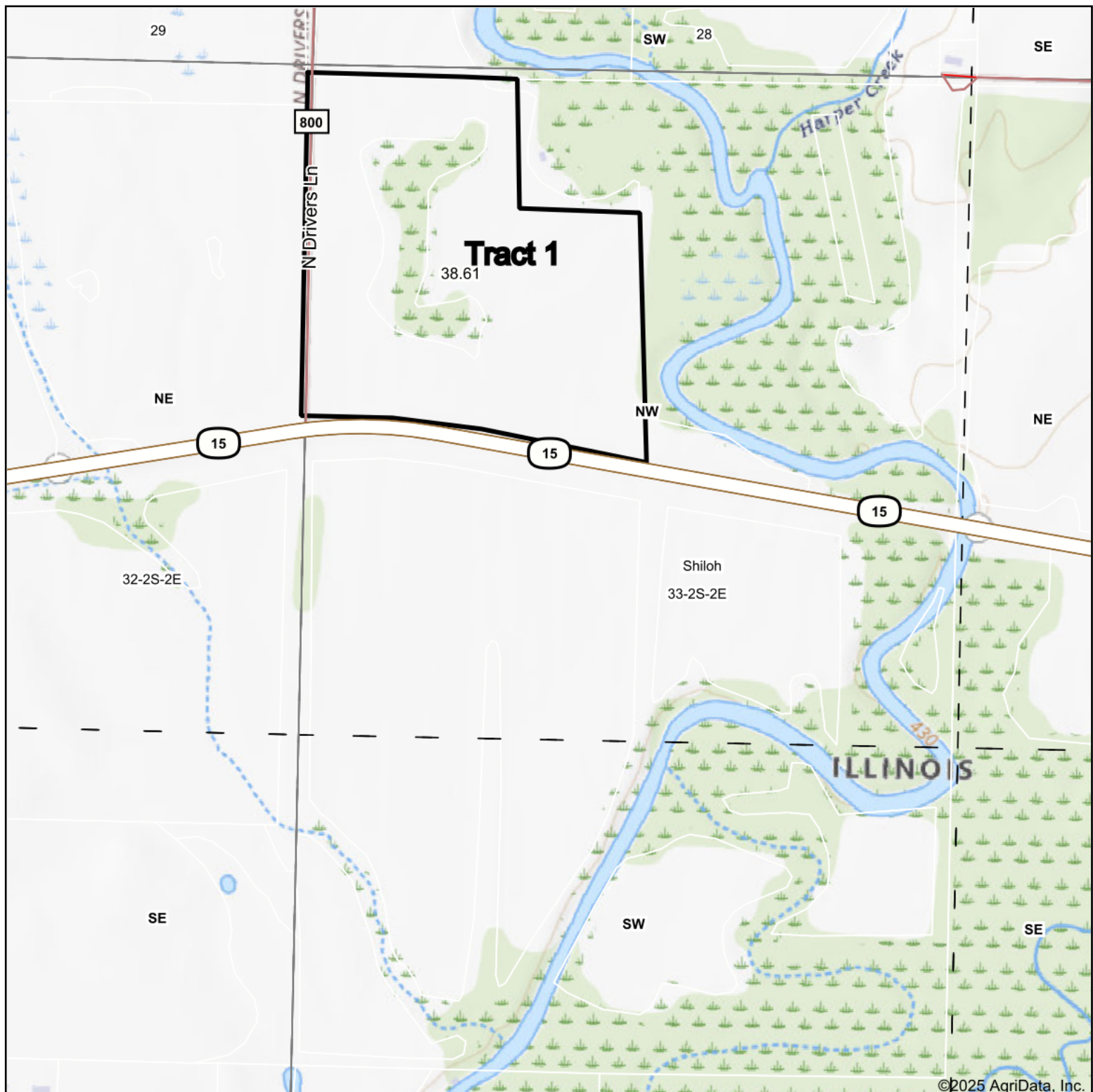
10/20/2025

33-2S-2E
Jefferson County
Illinois

Boundary Center: 38° 18' 45.36, -88° 59' 43.27

Field borders provided by Farm Service Agency as of 5/21/2008.

Topography Map



Map Center: 38° 18' 34.21, -88° 59' 39.37

0ft 624ft 1248ft

33-2S-2E
Jefferson County
Illinois



10/20/2025



Maps Provided By:

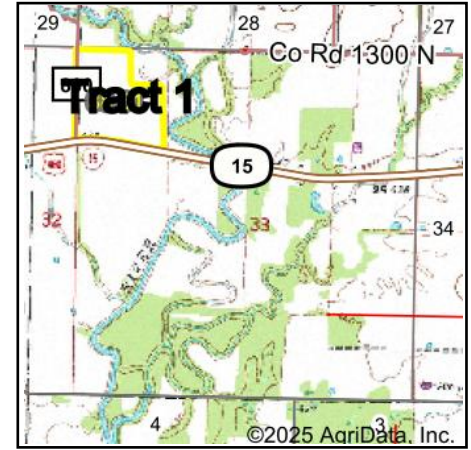


© AgriData, Inc. 2023

www.AgrIDataInc.com

Field borders provided by Farm Service Agency as of 5/21/2008.

Wetlands Map



State: **Illinois**
 Location: **33-2S-2E**
 County: **Jefferson**
 Township: **Shiloh**
 Date: **10/20/2025**

BUY A FARM
LAND & AUCTION COMPANY LLC
 Maps Provided By:
surety
 CUSTOMIZED ONLINE MAPPING
 © AgriData, Inc. 2023 www.AgriDataInc.com



0ft 431ft 862ft

Classification Code	Type	Acres
PFO1A	Freshwater Forested/Shrub Wetland	4.76
Total Acres		4.76

Data Source: National Wetlands Inventory website. U.S. DoI, Fish and Wildlife Service, Washington, D.C. <http://www.fws.gov/wetlands/>