

Land For Sale - Wayne County IL 254+/- Acres

Boundary Lines
Approximate

SOLD!

South

Co. Rd. 1500 N

Co. Rd. 1060 E

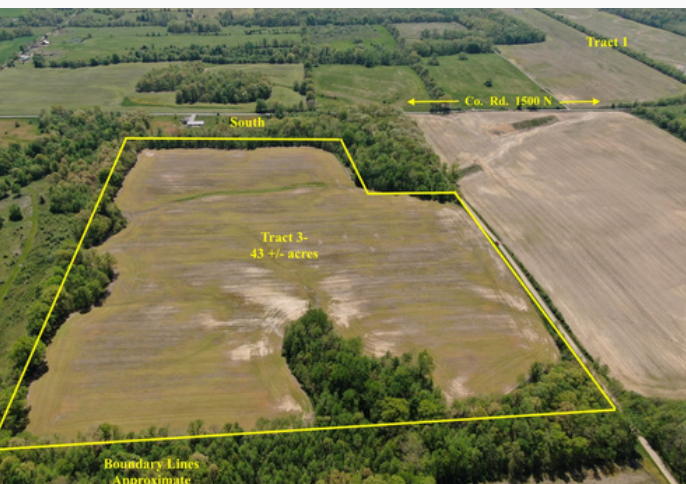


Address: Co Rd 1650 N & Co Rd 1600 N, Johnsonville, IL
Tract 1: \$603,000 / Tract 2: \$390,000 / Tract 3: \$215,000

ABOUT THIS PROPERTY:

254+/- ACRES OFFERED IN 3 TRACTS WITH MOST OF THE LAND BEING TILLABLE. ALL 3 TRACTS ARE IN WAYNE COUNTY IL WITHIN BERRY AND INDIAN PRAIRIE TOWNSHIPS, SOUTH OF JOHNSONVILLE IL.

- **TRACT 1 - 134+/- ACRES**
- **CONSISTING OF 134+/- ACRES WITH 112 AC TILLABLE.**
- **PRODUCTIVITY INDEX (PI) IS 97.69.**
- **TIMBER AREAS OFFER DEER AND TURKEY HUNTING.**
-
- **TRACT 2 - 78+/- ACRES**
- **CONSISTING OF 78+/- ACRES WITH 66.67 TILLABLE.**
- **PRODUCTIVITY INDEX (PI) IS 95.3.**
-
- **TRACT 3 - 43+/- ACRES**
- **CONSISTING OF 43+/- ACRES WITH 38.50 TILLABLE; REMAINDER IN TIMBER.**
- **PRODUCTIVITY INDEX (PI) IS 89.3.**



BUYAFARM.COM

Main Office: Sparta IL
618-443-1998



**CONTACT
BROKER
JOE CORSO**
Main Office
Sparta IL



618-663-1334



jcorso@buyafarm.com