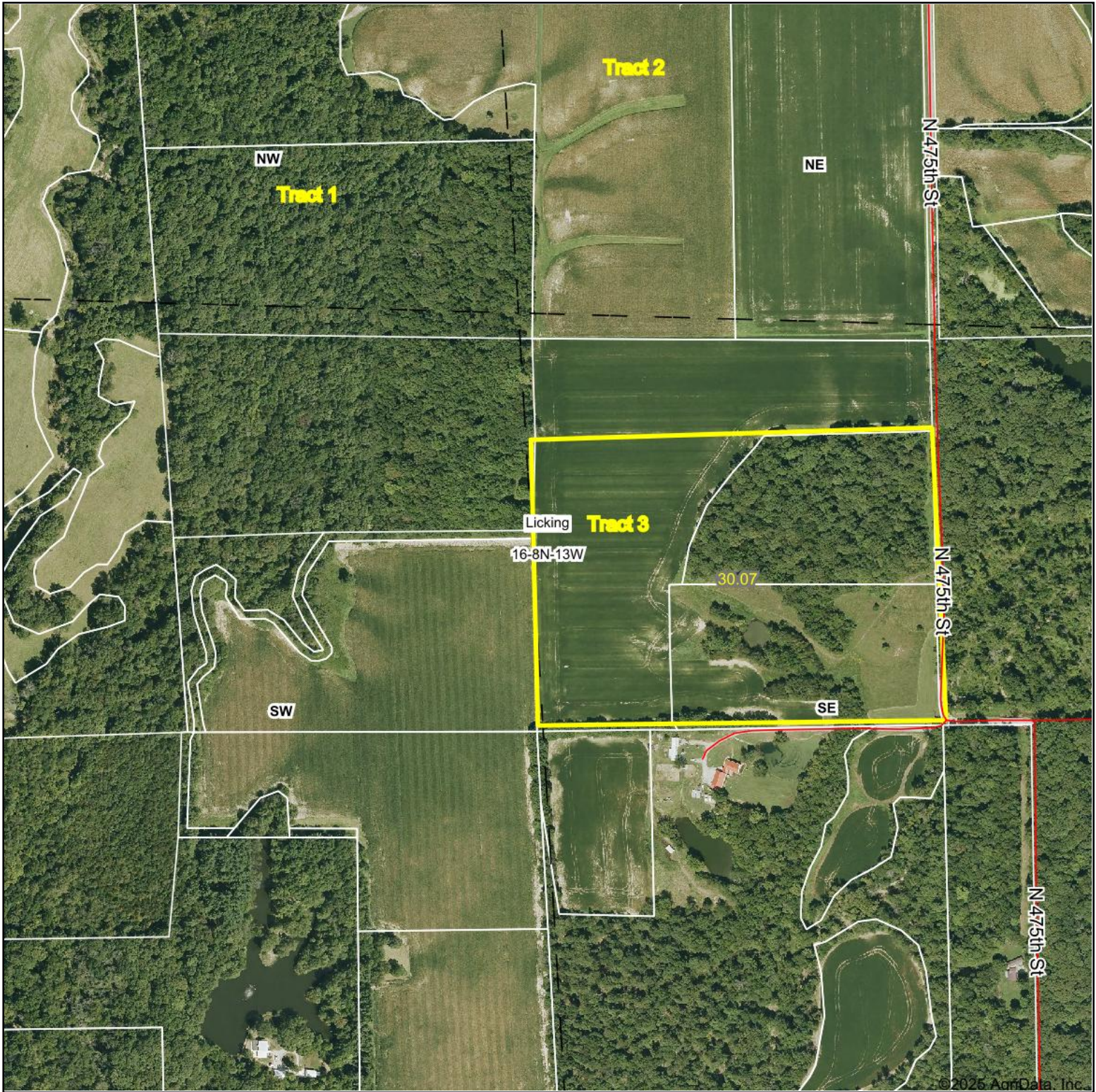


Aerial Map



Boundary Center: 39° 8' 3.66, -87° 51' 40.19

0ft 520ft 1041ft



Maps Provided By:



surety®
CUSTOMIZED ONLINE MAPPING

© AgriData, Inc. 2023 www.AgriDataInc.com

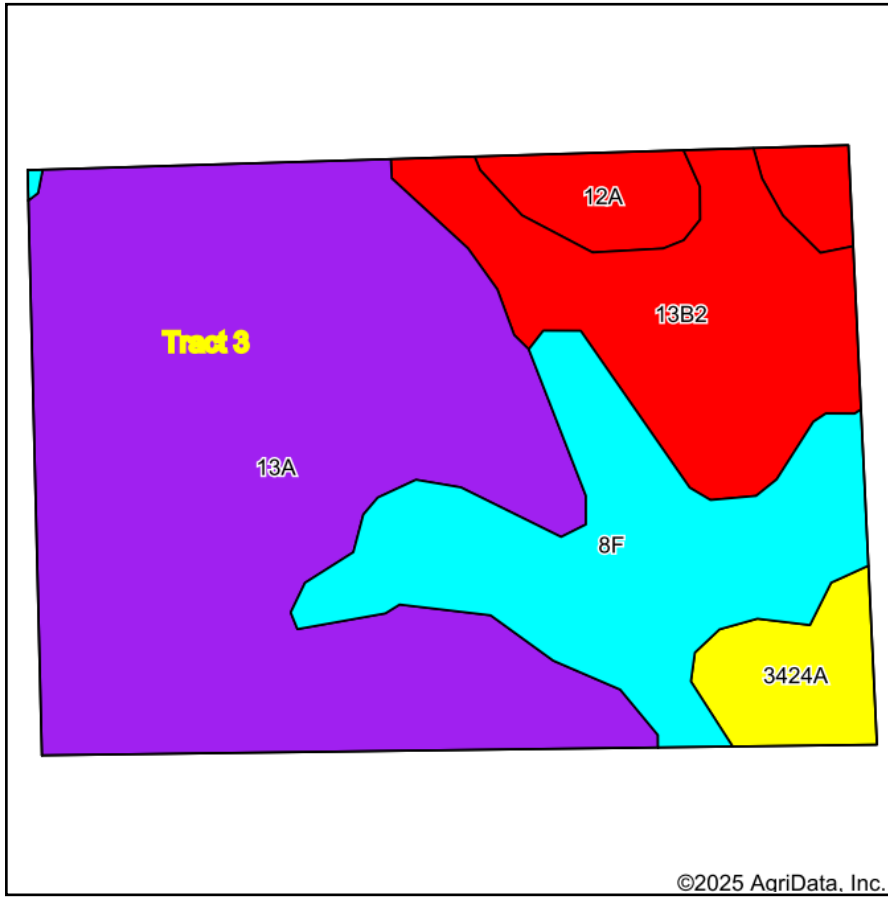
16-8N-13W
Crawford County
Illinois



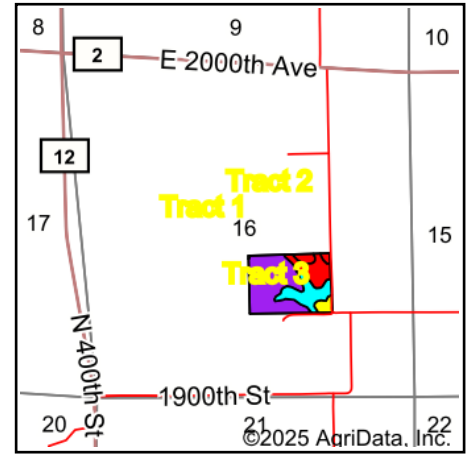
8/31/2025

Field borders provided by Farm Service Agency as of 5/21/2008.

Soils Map



Soils data provided by USDA and NRCS.



State: **Illinois**
 County: **Crawford**
 Location: **16-8N-13W**
 Township: **Licking**
 Acres: **30.07**
 Date: **8/31/2025**



Maps Provided By:



Area Symbol: IL033, Soil Area Version: 22

Code	Soil Description	Acres	Percent of field	Il. State Productivity Index Legend	Corn Bu/A	Soybeans Bu/A	Wheat Bu/A	Grass-legume e e hay, T/A	Crop productivity index for optimum management	*n NCCPI Soybeans
13A	Bluford silt loam, 0 to 2 percent slopes	16.49	54.7%		136	44	55	3.00	101	62
**8F	Hickory silt loam, 18 to 35 percent slopes	5.89	19.6%		**89	**30	**36	**3.00	**68	14
**13B2	Bluford silt loam, 2 to 5 percent slopes, eroded	4.77	15.9%		**129	**42	**52	**3.00	**96	45
12A	Wynooze silt loam, 0 to 2 percent slopes	1.52	5.1%		128	42	51	4.00	97	49
**3424A	Shoals silt loam, 0 to 2 percent slopes, frequently flooded	1.40	4.7%		**157	**50	**62	**5.00	**114	66
Weighted Average					126.3	41.1	50.9	3.1	94.1	*n 49.4

Table: Optimum Crop Productivity Ratings for Illinois Soil EFOTG are sourced from Bulletin 811 calculated Map Unit Base Yield Indices, and adjusted (Adj) for slope, erosion, flooding, and surface texture. Publication Date: 01-28-2025

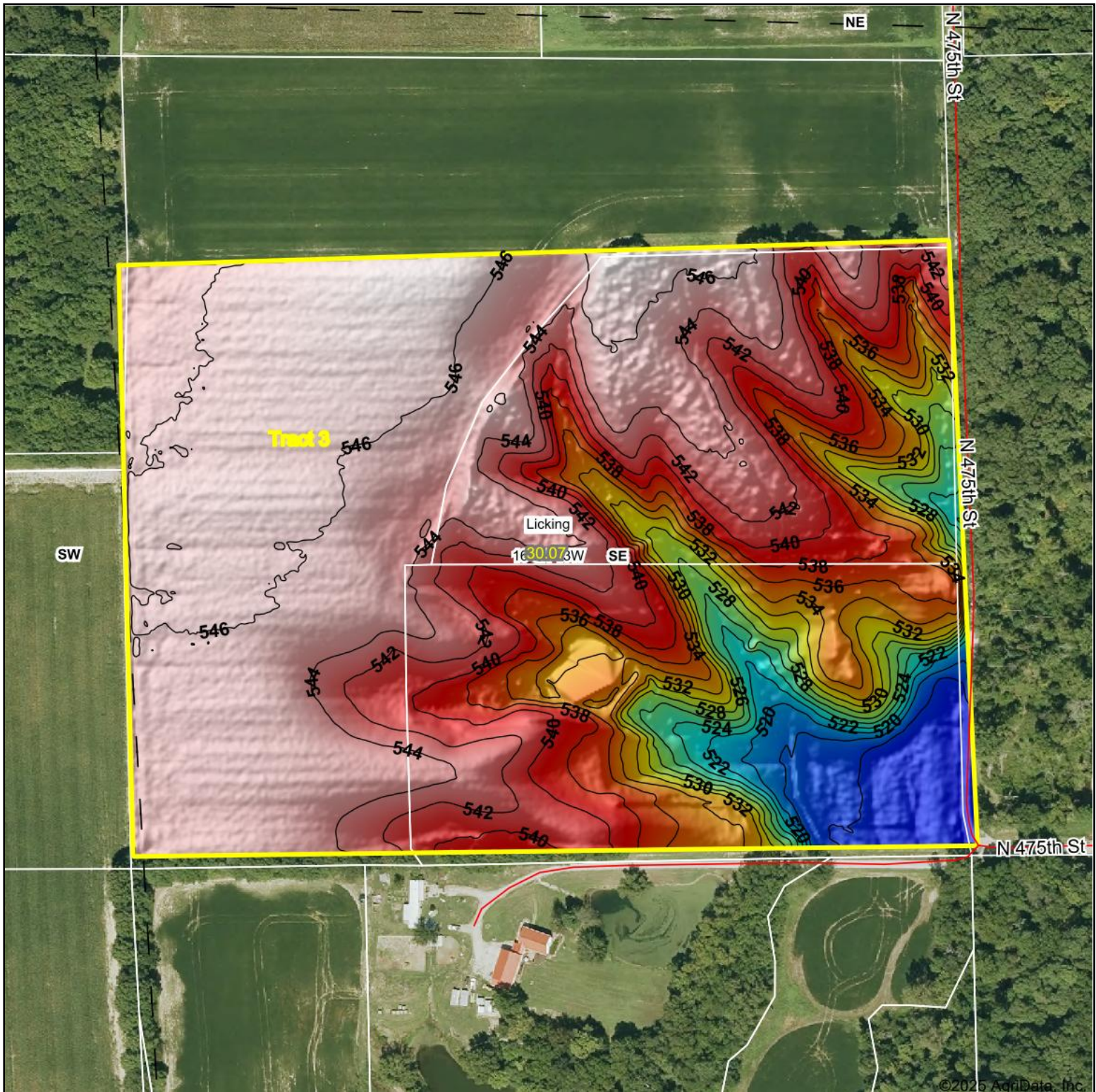
Crop yields and productivity (B811 EFOTG) are maintained at the following USDA web site: 2023 Illinois Soil Productivity and Yield Indices: <https://efotg.sc.egov.usda.gov/#/state/IL/documents/section=2&folder=52809>

** Base indexes from Bulletin 811 adjusted for slope, erosion, flooding, and surface texture according to the Il. Soils EFOTG

e Soils in the well drained group were not rated for grass-legume and are shown with a zero "0".

*n: The aggregation method is "Weighted Average using all components"

Topography Hillshade



Source: USGS 1 meter dem

Interval(ft): 2

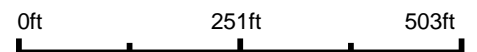
Min: 514.4

Max: 547.4

Range: 33.0

Average: 539.6

Standard Deviation: 8.27 ft



8/31/2025

16-8N-13W
Crawford County
Illinois

Boundary Center: 39° 8' 3.66, -87° 51' 40.19



Maps Provided By:

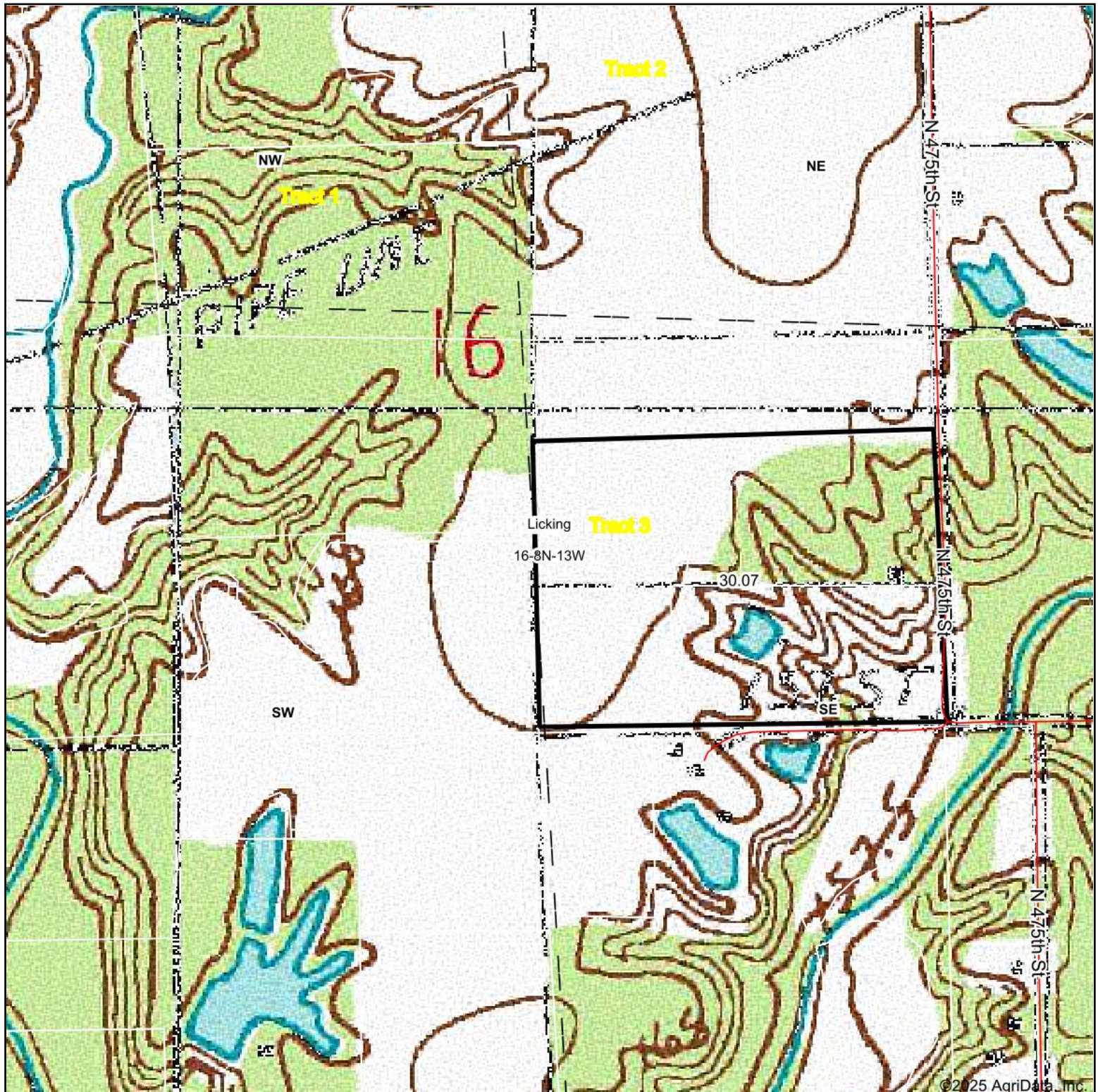


© AgriData, Inc. 2023

www.AgriDataInc.com

Field borders provided by Farm Service Agency as of 5/21/2008.

Topography Map



Map Center: 39° 8' 4.58, -87° 51' 48.31

0ft 520ft 1041ft

16-8N-13W
Crawford County
Illinois



8/31/2025



Maps Provided By:



© AgriData, Inc. 2023

www.AgriDataInc.com

Field borders provided by Farm Service Agency as of 5/21/2008.