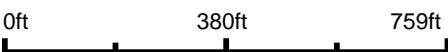


Aerial Map



Boundary Center: 38° 34' 32.39, -89° 8' 49.38



36-2N-1W
Clinton County
Illinois

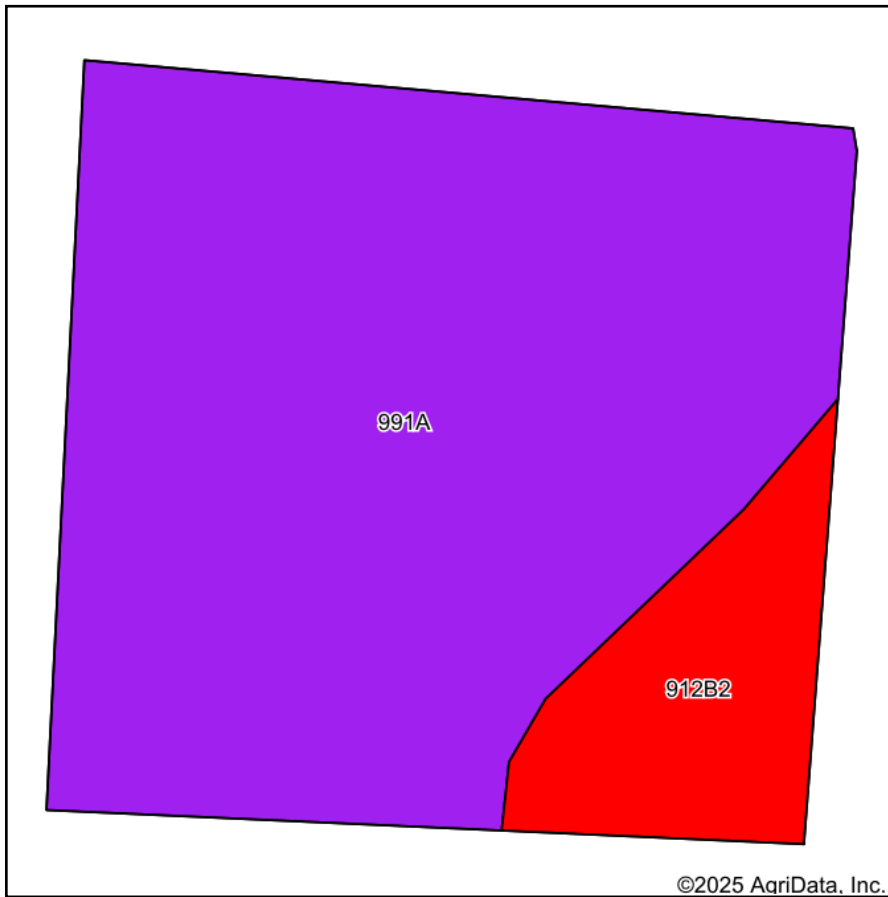


Maps Provided By:
surety
CUSTOMIZED ONLINE MAPPING
© AgriData, Inc. 2023 www.AgriDataInc.com

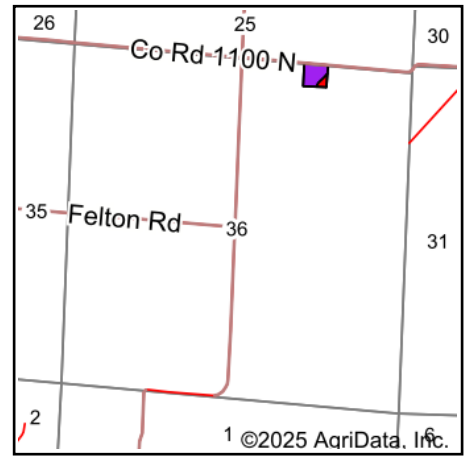
Field borders provided by Farm Service Agency as of 5/21/2008.

8/4/2025

Soils Map



Soils data provided by USDA and NRCS.



State: **Illinois**
 County: **Clinton**
 Location: **36-2N-1W**
 Township: **Meridian**
 Acres: **3**
 Date: **8/4/2025**



Maps Provided By:



Area Symbol: IL027, Soil Area Version: 19

Code	Soil Description	Acres	Percent of field	Il. State Productivity Index Legend	Corn Bu/A	Soybeans Bu/A	Wheat Bu/A	Grass-legume hay, T/A	Crop productivity index for optimum management	*n NCCPI Soybeans
991A	Cisne-Huey silt loams, 0 to 2 percent slopes	2.58	86.0%		131	44	51	5.00	100	59
**912B2	Hoyleton-Darmstadt silt loams, 2 to 5 percent slopes, eroded	0.42	14.0%		**125	**42	**48	**4.00	**96	56
Weighted Average					130.2	43.7	50.6	4.9	99.4	*n 58.6

Table: Optimum Crop Productivity Ratings for Illinois Soil EFOTG are sourced from Bulletin 811 calculated Map Unit Base Yield Indices, and adjusted (Adj) for slope, erosion, flooding, and surface texture. Publication Date: 01-28-2025

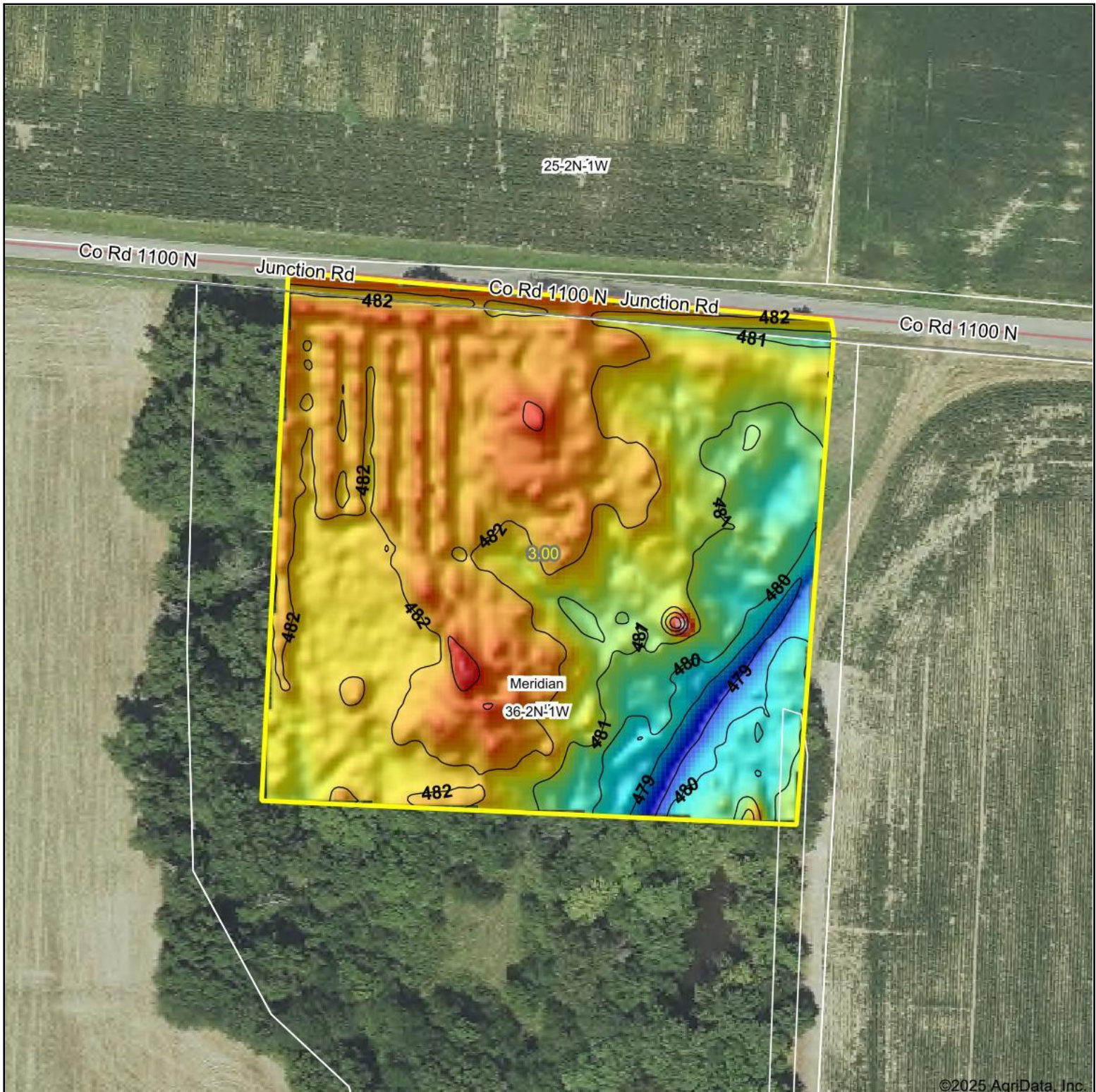
Crop yields and productivity (B811 EFOTG) are maintained at the following USDA web site: 2023 Illinois Soil Productivity and Yield Indices: <https://efotg.sc.egov.usda.gov/#/state/IL/documents/section=2&folder=52809>

** Base indexes from Bulletin 811 adjusted for slope, erosion, flooding, and surface texture according to the Il. Soils EFOTG

e Soils in the well drained group were not rated for grass-legume and are shown with a zero "0".

*n: The aggregation method is "Weighted Average using all components"

Topography Hillshade



Source: USGS 1 meter dem

Interval(ft): 1

Min: 478.2

Max: 485.0

Range: 6.8

Average: 481.6

Standard Deviation: 0.92 ft



36-2N-1W
Clinton County
Illinois

Boundary Center: 38° 34' 32.39, -89° 8' 49.38



Maps Provided By:



© AgriData, Inc. 2023

www.AgriDataInc.com

Field borders provided by Farm Service Agency as of 5/21/2008.