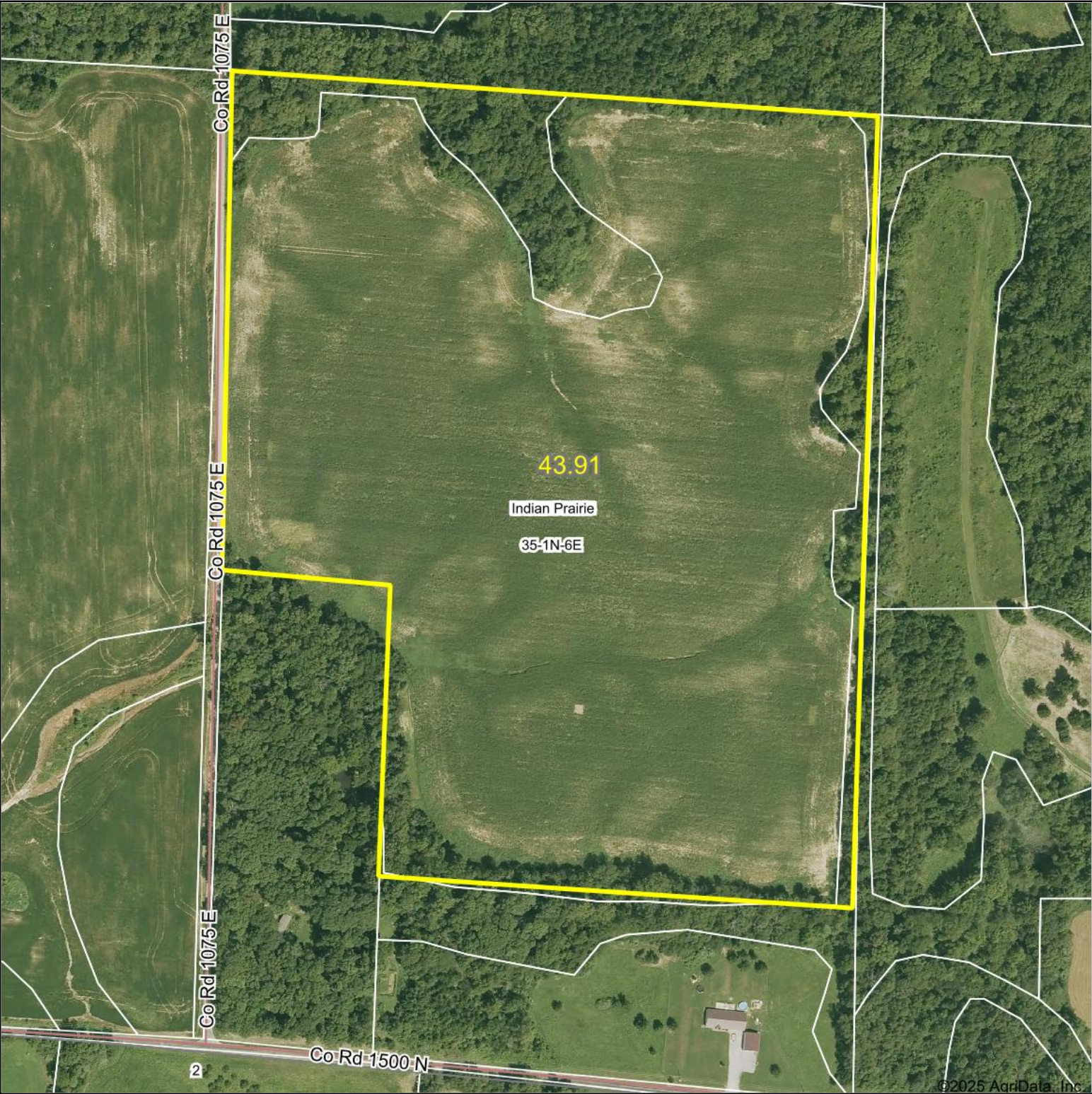


Aerial Map



Boundary Center: 38° 28' 34.47, -88° 29' 49.52

0ft 318ft 636ft

35-1N-6E  
Wayne County  
Illinois



Maps Provided By:  
 **surety**  
CUSTOMIZED ONLINE MAPPING  
© AgriData, Inc. 2023 www.AgriDataInc.com

4/27/2025

Field borders provided by Farm Service Agency as of 5/21/2008.