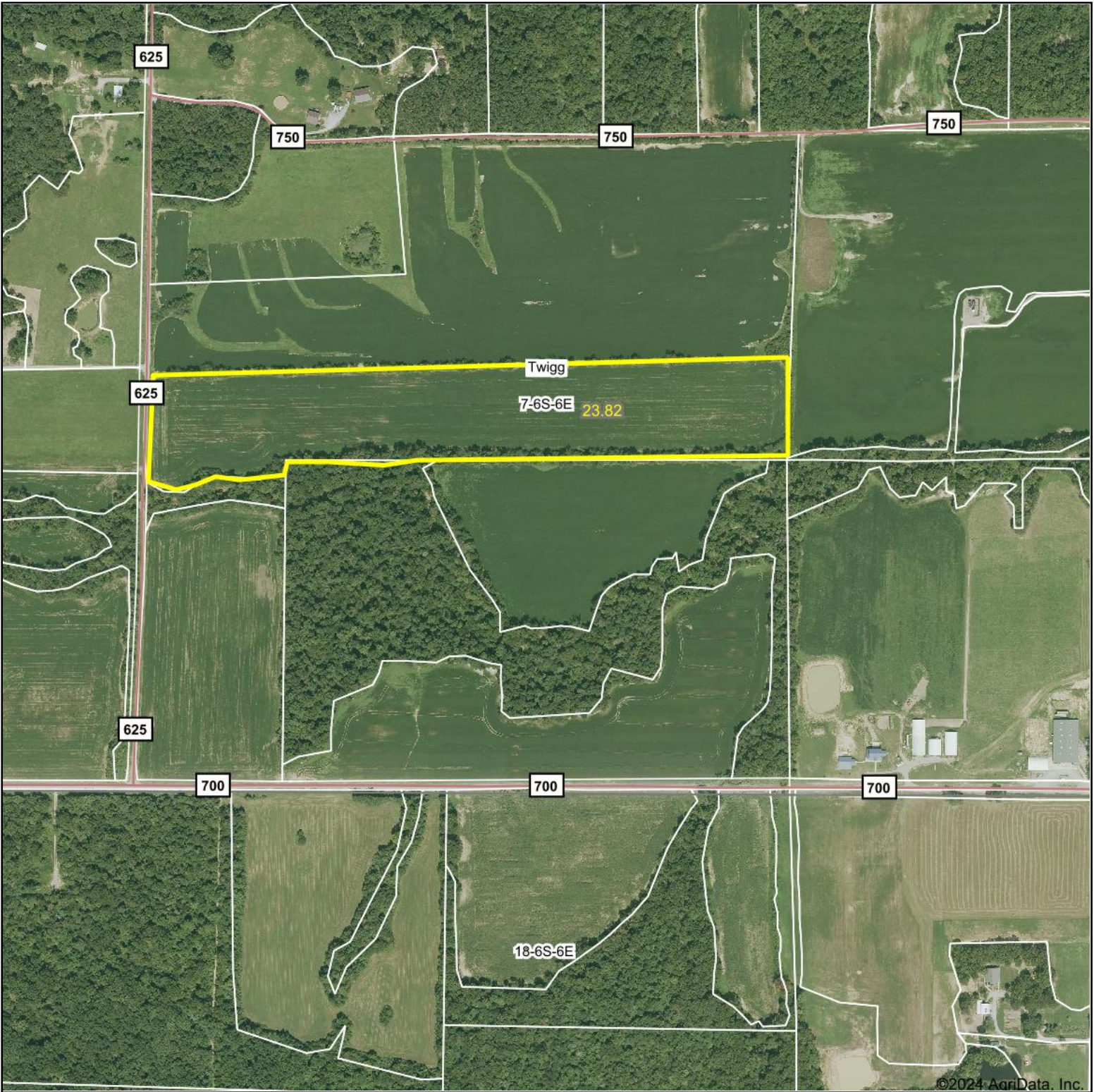
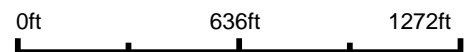


Aerial Map



Boundary Center: 38° 0' 48.9, -88° 35' 9.35



7-6S-6E
Hamilton County
Illinois



Maps Provided By:

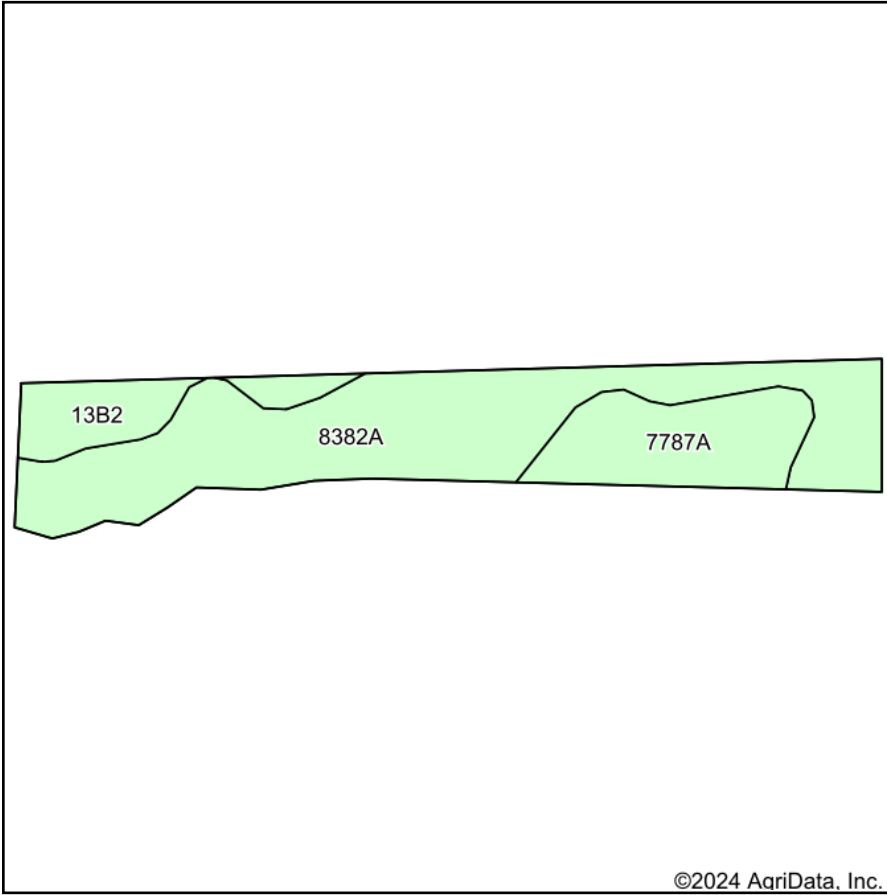


© AgriData, Inc. 2023 www.AgriDataInc.com

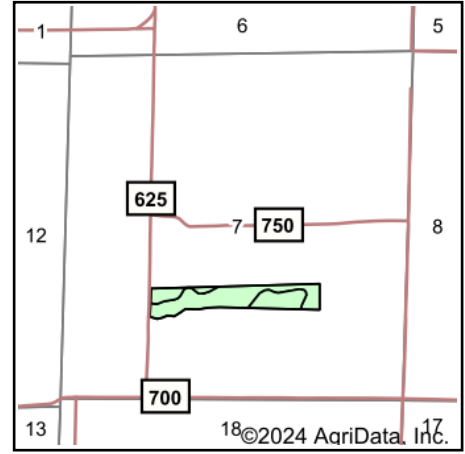
12/18/2024

Field borders provided by Farm Service Agency as of 5/21/2008.

Soils Map



Soils data provided by USDA and NRCS.



State: **Illinois**
 County: **Hamilton**
 Location: **7-6S-6E**
 Township: **Twig**
 Acres: **21.92**
 Date: **12/18/2024**



Maps Provided By:



Area Symbol: IL065, Soil Area Version: 19

Code	Soil Description	Acres	Percent of field	Corn Bu/A	Soybeans Bu/A	Wheat Bu/A	Crop productivity index for optimum management	*n NCCPI Soybeans
8382A	Belknap silt loam, 0 to 2 percent slopes, occasionally flooded	14.35	65.5%	156	52	63	117	69
7787A	Banic silt loam, 0 to 2 percent slopes, rarely flooded	4.76	21.7%	142	47	56	106	43
**13B2	Bluford silt loam, 2 to 5 percent slopes, eroded	2.81	12.8%	**129	**42	**52	**96	45
Weighted Average				149.5	49.6	60.1	111.9	*n 60.3

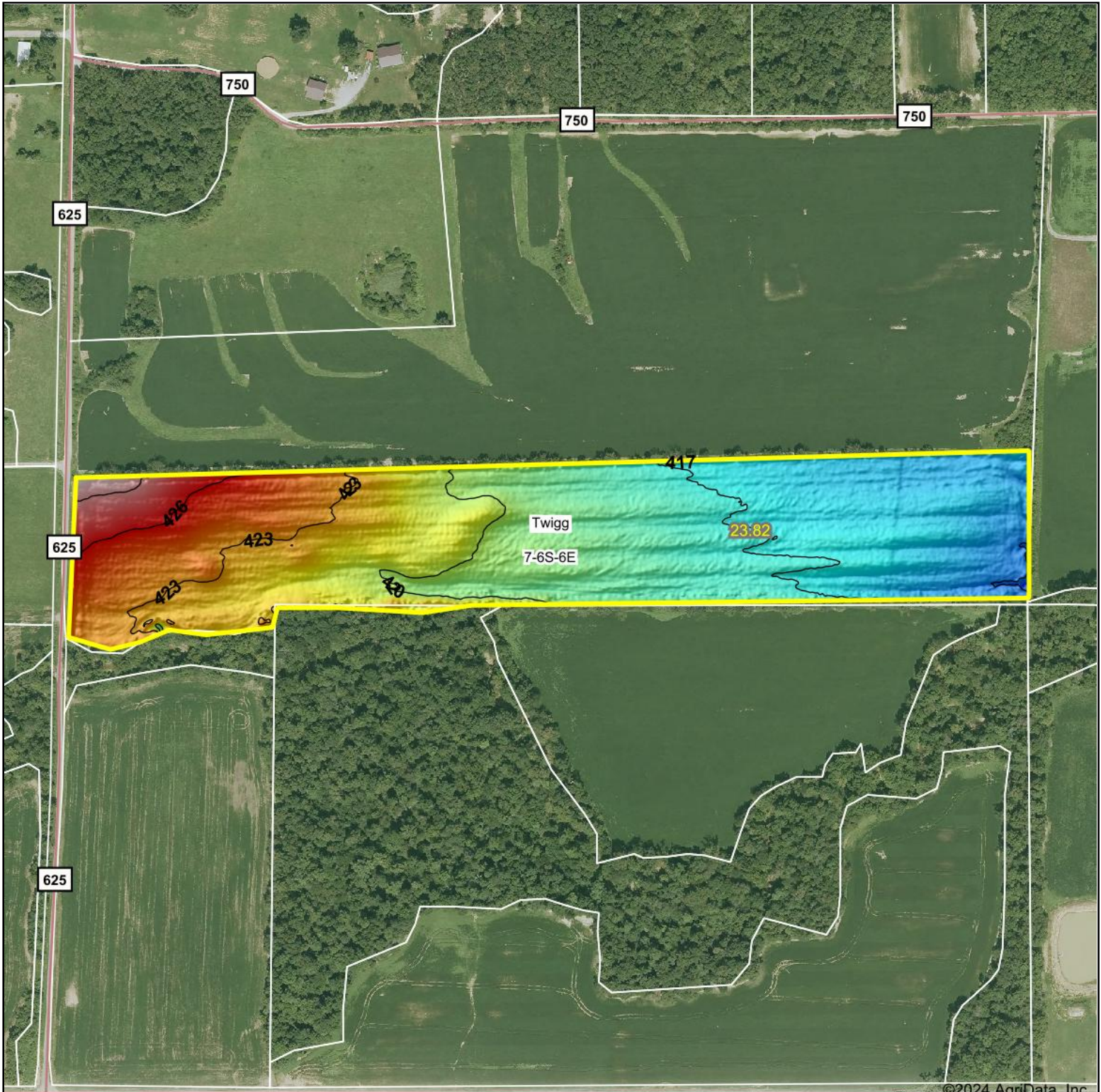
Table: Optimum Crop Productivity Ratings for Illinois Soil EFOTG are sourced from Bulletin 811 calculated Map Unit Base Yield Indices, and adjusted (Adj) for slope, erosion, flooding, and surface texture. Publication Date: 02-08-2023

Crop yields and productivity (B811 EFOTG) are maintained at the following USDA web site: 2023 Illinois Soil Productivity and Yield Indices: <https://efotg.sc.egov.usda.gov/#/state/IL/documents/section=2&folder=52809>

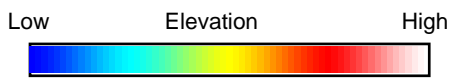
** Base indexes from Bulletin 811 adjusted for slope, erosion, flooding, and surface texture according to the Il. Soils EFOTG

*n: The aggregation method is "Weighted Average using all components"

Topography Hillshade



©2024 AgriData, Inc.



Source: USGS 1 meter dem
 Interval(ft): 3
 Min: 412.0
 Max: 430.7
 Range: 18.7
 Average: 419.7
 Standard Deviation: 3.51 ft



12/18/2024

7-6S-6E
Hamilton County
Illinois

Boundary Center: 38° 0' 48.9, -88° 35' 9.35



Maps Provided By:



© AgriData, Inc. 2023 www.AgriDataInc.com

Field borders provided by Farm Service Agency as of 5/21/2008.