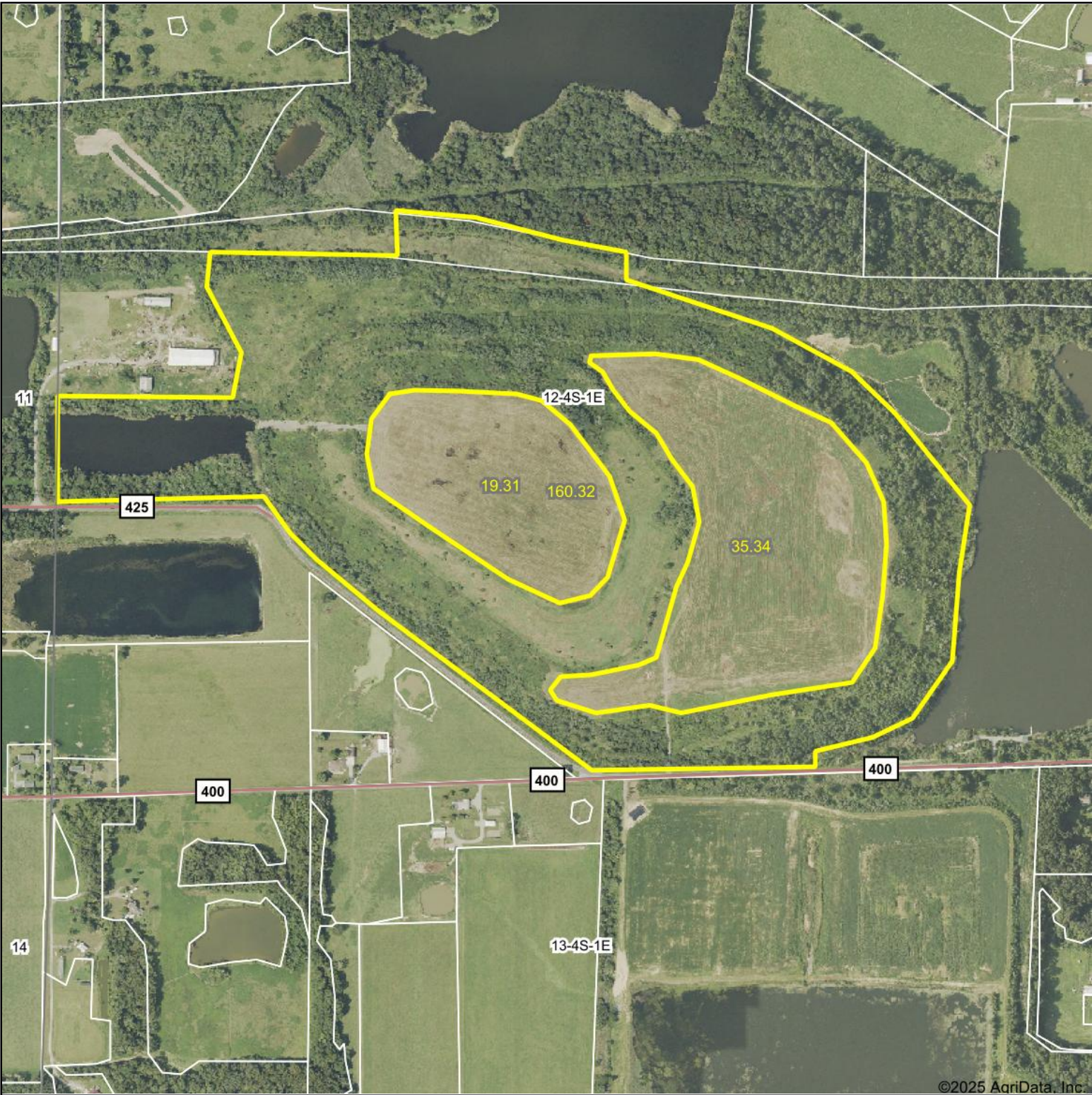
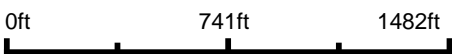


Aerial Map



©2025 AgriData, Inc.

Boundary Center: 38° 11' 14.28, -89° 3' 3.03



12-4S-1E  
Jefferson County  
Illinois

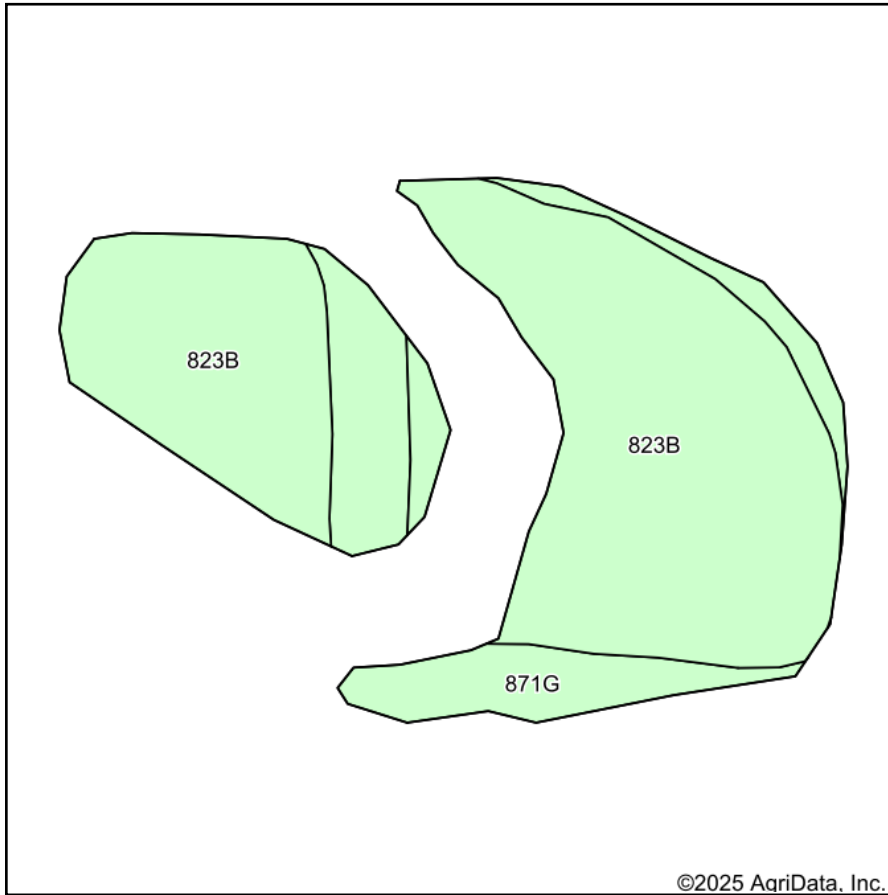


Maps Provided By:  
 **surety**  
CUSTOMIZED ONLINE MAPPING  
© AgriData, Inc. 2025      www.AgriDataInc.com

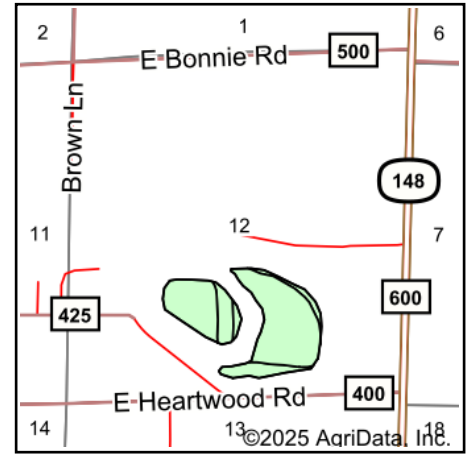
12/16/2025

Field borders provided by Farm Service Agency as of 5/21/2008.

# Soils Map



Soils data provided by USDA and NRCS.



State: **Illinois**  
 County: **Jefferson**  
 Location: **12-4S-1E**  
 Township: **Bald Hill**  
 Acres: **54.65**  
 Date: **12/16/2025**



Maps Provided By:



Area Symbol: IL081, Soil Area Version: 18							
Code	Soil Description	Acres	Percent of field	Corn Bu/A	Soybeans Bu/A	Wheat Bu/A	Crop productivity index for optimum management
**823B	Schuline silt loam, 1 to 5 percent slopes	42.97	78.6%	**130	**42	**45	**95
**871G	Lenzburg gravelly silty clay loam, 20 to 60 percent slopes, stony	11.68	21.4%	**59	**20	**22	**45
<b>Weighted Average</b>				<b>114.8</b>	<b>37.3</b>	<b>40.1</b>	<b>84.3</b>

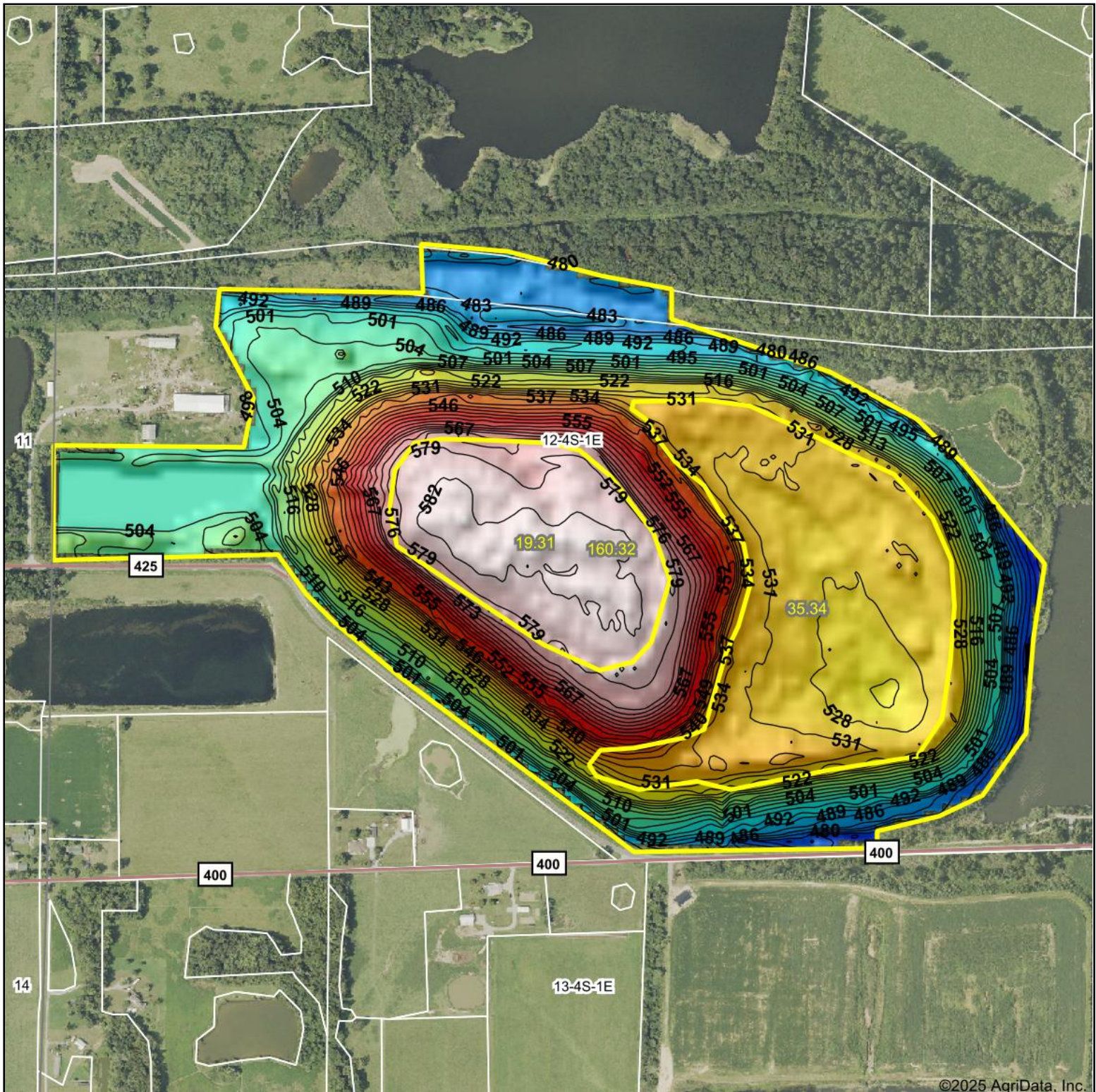
**Table: Optimum Crop Productivity Ratings for Illinois Soil EFOTG are sourced from Bulletin 811 calculated Map Unit Base Yield Indices, and adjusted (Adj) for slope, erosion, flooding, and surface texture.** Publication Date: 02-08-2023

Crop yields and productivity (B811 EFOTG) are maintained at the following USDA web site: 2023 Illinois Soil Productivity and Yield Indices: <https://efotg.sc.egov.usda.gov/#/state/IL/documents/section=2&folder=52809>

\*\* Base indexes from Bulletin 811 adjusted for slope, erosion, flooding, and surface texture according to the Il. Soils EFOTG



# Topography Hillshade



©2025 AgriData, Inc.



Source: USGS 10 meter dem

Interval(ft): 3

Min: 464.9

Max: 583.4

Range: 118.5

Average: 517.0

Standard Deviation: 28.41 ft



12/16/2025

**12-4S-1E**  
**Jefferson County**  
**Illinois**

Boundary Center: 38° 11' 14.28, -89° 3' 3.03



Maps Provided By:



© AgriData, Inc. 2025

www.AgriDataInc.com

Field borders provided by Farm Service Agency as of 5/21/2008.