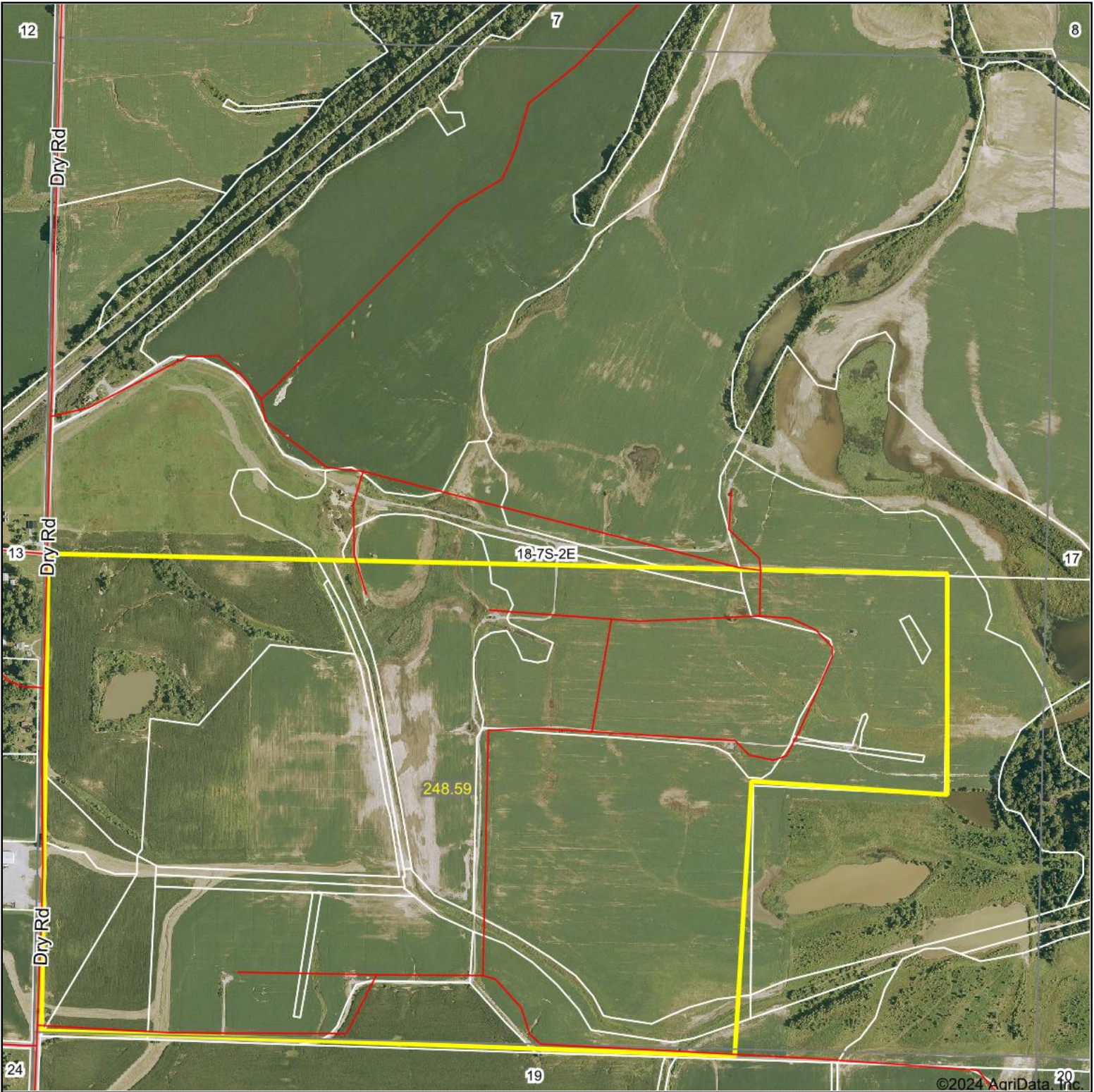
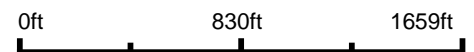


Aerial Map



Boundary Center: 37° 54' 35.22, -89° 1' 53.04



18-7S-2E
Franklin County
Illinois



11/22/2024



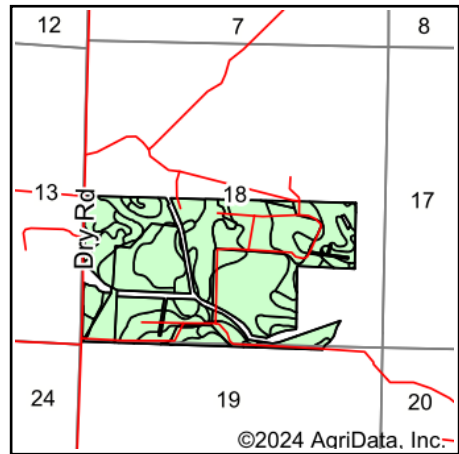
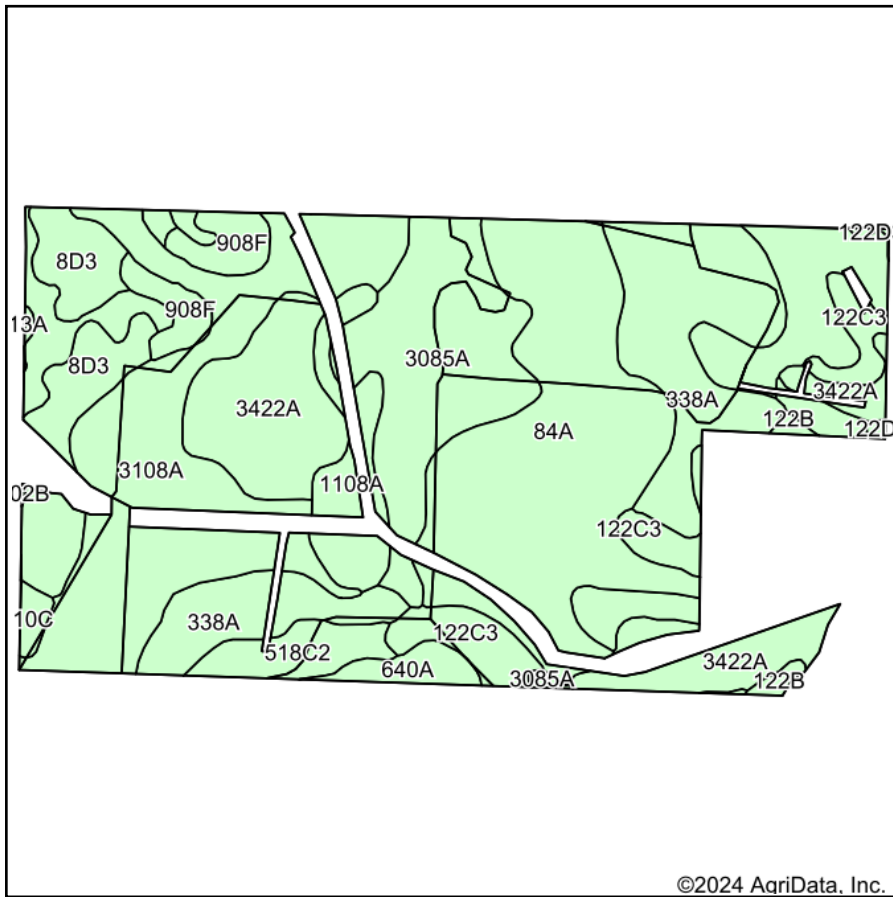
Maps Provided By:



© AgriData, Inc. 2023 www.AgriDataInc.com

Field borders provided by Farm Service Agency as of 5/21/2008.

Soils Map



State: **Illinois**
 County: **Franklin**
 Location: **18-7S-2E**
 Township: **Denning**
 Acres: **241.86**
 Date: **11/22/2024**



Soils data provided by USDA and NRCS.

©2024 AgriData, Inc.

Area Symbol: IL055, Soil Area Version: 18

Code	Soil Description	Acres	Percent of field	Corn Bu/A	Soybeans Bu/A	Wheat Bu/A	Crop productivity index for optimum management	*n NCCPI Soybeans
84A	Okaw silt loam, 0 to 2 percent slopes	46.63	19.2%	129	42	55	96	37
**3108A	Bonnie silt loam, 0 to 2 percent slopes, frequently flooded	41.28	17.1%	**134	**44	**53	**100	49
338A	Hurst silt loam, 0 to 2 percent slopes	30.89	12.8%	134	44	55	100	55
**3085A	Jacob silty clay, 0 to 2 percent slopes, frequently flooded	25.45	10.5%	**94	**35	**39	**74	25
**3422A	Cape silty clay loam, 0 to 2 percent slopes, frequently flooded	24.84	10.3%	**122	**41	**52	**93	30
**8D3	Hickory clay loam, 10 to 18 percent slopes, severely eroded	15.41	6.4%	**93	**32	**38	**71	48
**122C3	Colp silty clay loam, 5 to 10 percent slopes, severely eroded	14.92	6.2%	**98	**31	**41	**72	42
**122B	Colp silt loam, 2 to 5 percent slopes	12.52	5.2%	**131	**41	**55	**96	57
**1108A	Bonnie silt loam, undrained, 0 to 2 percent slopes, frequently flooded	7.55	3.1%	**75	**25	**30	**56	12
**908F	Hickory-Kell silt loams, 18 to 35 percent slopes	6.37	2.6%	**91	**31	**36	**69	7
**518C2	Rend silt loam, 5 to 10 percent slopes, eroded	5.63	2.3%	**128	**40	**50	**95	48
**14B	Ava silt loam, 2 to 5 percent slopes	5.56	2.3%	**134	**44	**54	**99	55
640A	Bluford silt loam, bench, 0 to 2 percent slopes	2.98	1.2%	136	44	55	101	57

Soils data provided by USDA and NRCS. Soils data provided by University of Illinois at Champaign-Urbana.



Code	Soil Description	Acres	Percent of field	Corn Bu/A	Soybeans Bu/A	Wheat Bu/A	Crop productivity index for optimum management	*n NCCPI Soybeans
**10C	Plumfield silty clay loam, 5 to 10 percent slopes	1.24	0.5%	**79	**26	**30	**60	27
**122D3	Colp silty clay loam, 10 to 18 percent slopes, severely eroded	0.39	0.2%	**89	**28	**37	**65	37
13A	Bluford silt loam, 0 to 2 percent slopes	0.20	0.1%	136	44	55	101	62
Weighted Average				119.2	39.5	49.1	89.4	*n 40.7

Table: Optimum Crop Productivity Ratings for Illinois Soil EFOTG are sourced from Bulletin 811 calculated Map Unit Base Yield Indices, and adjusted (Adj) for slope, erosion, flooding, and surface texture. Publication Date: 02-08-2023

Crop yields and productivity (B811 EFOTG) are maintained at the following USDA web site: 2023 Illinois Soil Productivity and Yield Indices:

<https://efotg.sc.egov.usda.gov/#/state/IL/documents/section=2&folder=52809>

** Base indexes from Bulletin 811 adjusted for slope, erosion, flooding, and surface texture according to the Il. Soils EFOTG

*n: The aggregation method is "Weighted Average using all components"