

# Aerial Map



Boundary Center: 37° 53' 43.11, -89° 2' 5.9



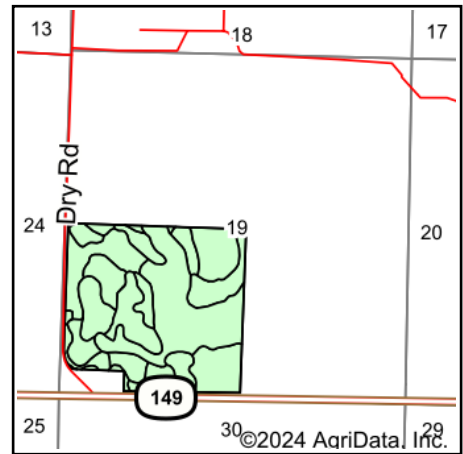
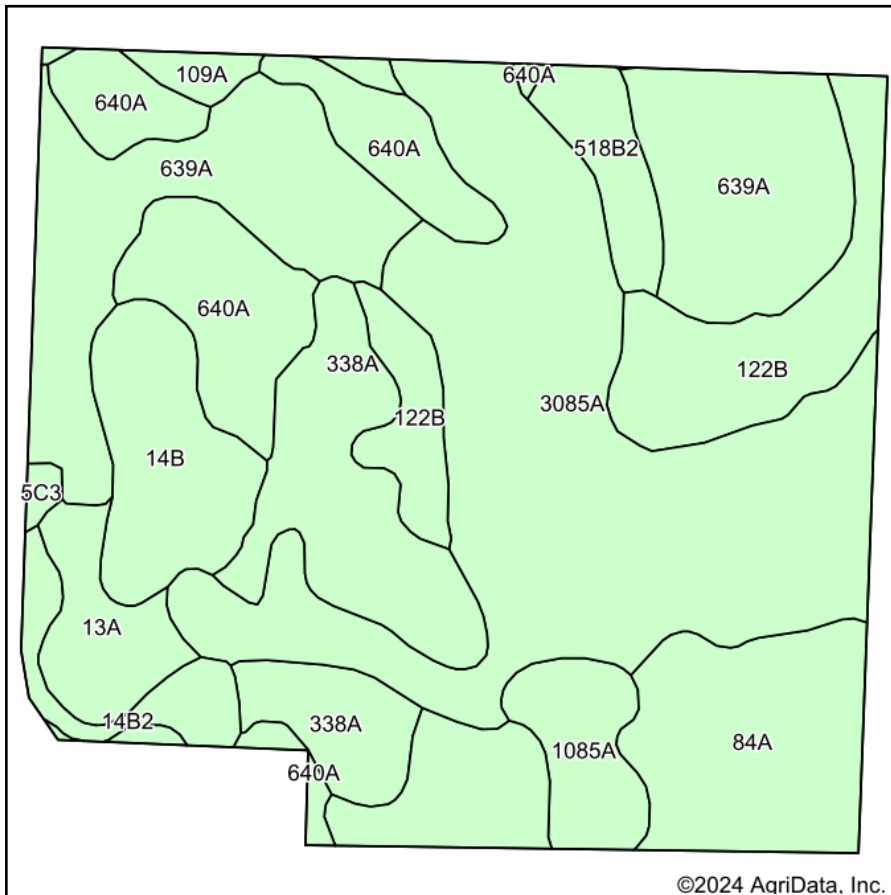
**19-7S-2E**  
**Franklin County**  
**Illinois**



Maps Provided By:  
**surety**  
CUSTOMIZED ONLINE MAPPING  
© AgriData, Inc. 2023 www.AgriDataInc.com

11/14/2024

# Soils Map



State: **Illinois**  
 County: **Franklin**  
 Location: **19-7S-2E**  
 Township: **Denning**  
 Acres: **158.57**  
 Date: **11/14/2024**



Maps Provided By:  
  
 © AgriData, Inc. 2023 [www.AgriDataInc.com](http://www.AgriDataInc.com)



Soils data provided by USDA and NRCS.

Area Symbol: IL055, Soil Area Version: 18

Code	Soil Description	Acres	Percent of field	Corn Bu/A	Soybeans Bu/A	Wheat Bu/A	Crop productivity index for optimum management	*n NCCPI Soybeans
**3085A	Jacob silty clay, 0 to 2 percent slopes, frequently flooded	43.80	27.8%	**94	**35	**39	**74	25
639A	Wynooose silt loam, bench, 0 to 2 percent slopes	26.82	16.9%	128	42	51	97	49
84A	Okaw silt loam, 0 to 2 percent slopes	17.39	11.0%	129	42	55	96	37
338A	Hurst silt loam, 0 to 2 percent slopes	15.14	9.5%	134	44	55	100	55
640A	Bluford silt loam, bench, 0 to 2 percent slopes	14.73	9.3%	136	44	55	101	57
**122B	Colp silt loam, 2 to 5 percent slopes	13.03	8.2%	**131	**41	**55	**96	57
**14B	Ava silt loam, 2 to 5 percent slopes	8.64	5.4%	**134	**44	**54	**99	55
**1085A	Jacob silty clay, undrained, 0 to 2 percent slopes, frequently flooded	4.82	3.0%	**52	**20	**22	**41	9
13A	Bluford silt loam, 0 to 2 percent slopes	4.78	3.0%	136	44	55	101	62
**518B2	Rend silt loam, 2 to 5 percent slopes, eroded	3.71	2.3%	**131	**40	**52	**97	48
**14B2	Ava silt loam, 2 to 5 percent slopes, eroded	3.28	2.1%	**126	**41	**51	**93	38
109A	Raccoon silt loam, 0 to 2 percent slopes	1.65	1.0%	144	46	56	106	71
**5C3	Blair silty clay loam, 5 to 10 percent slopes, severely eroded	0.78	0.5%	**101	**33	**40	**76	56
<b>Weighted Average</b>				<b>118.6</b>	<b>39.8</b>	<b>48.6</b>	<b>89.5</b>	<b>*n 42.5</b>

Soils data provided by USDA and NRCS. Soils data provided by University of Illinois at Champaign-Urbana.

Maps Provided By:



© AgriData, Inc. 2023

www.AgriDataInc.com

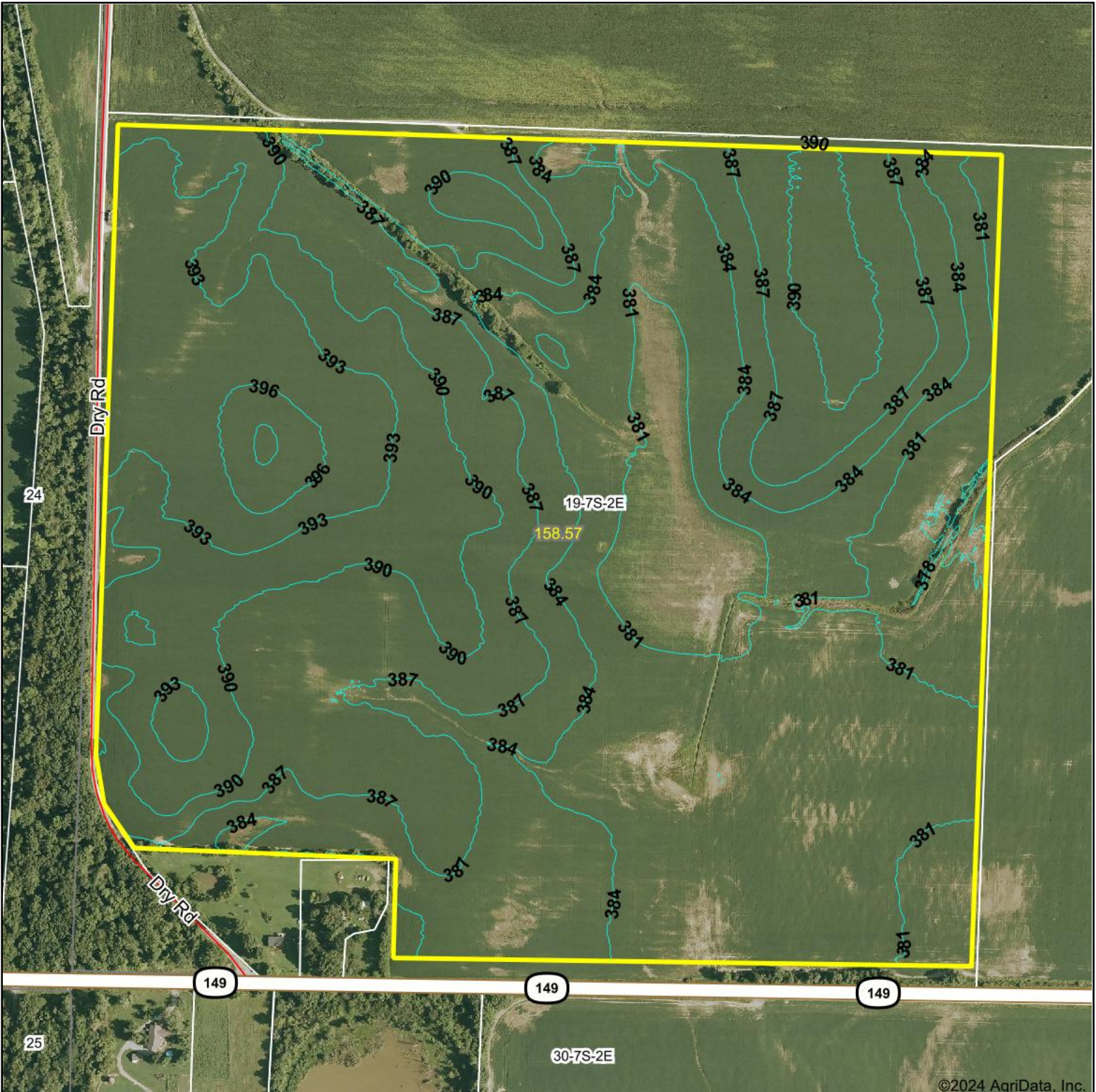
**Table: Optimum Crop Productivity Ratings for Illinois Soil EFOTG are sourced from Bulletin 811 calculated Map Unit Base Yield Indices, and adjusted (Adj) for slope, erosion, flooding, and surface texture.** Publication Date: 02-08-2023

Crop yields and productivity (B811 EFOTG) are maintained at the following USDA web site: 2023 Illinois Soil Productivity and Yield Indices:  
<https://efotg.sc.egov.usda.gov/#/state/IL/documents/section=2&folder=52809>

\*\* Base indexes from Bulletin 811 adjusted for slope, erosion, flooding, and surface texture according to the Il. Soils EFOTG

\*n: The aggregation method is "Weighted Average using all components"

# Topography Contours

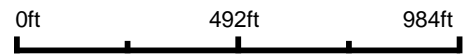


Maps Provided By:



© AgriData, Inc. 2023 www.AgriDataInc.com

Source: USGS 1 meter dem  
 Interval(ft): 3.0  
 Min: 376.3  
 Max: 399.4  
 Range: 23.1  
 Average: 386.5  
 Standard Deviation: 4.63 ft



11/14/2024

**19-7S-2E**  
**Franklin County**  
**Illinois**

Boundary Center: 37° 53' 43.11, -89° 2' 5.9

Field borders provided by Farm Service Agency as of 5/21/2008.