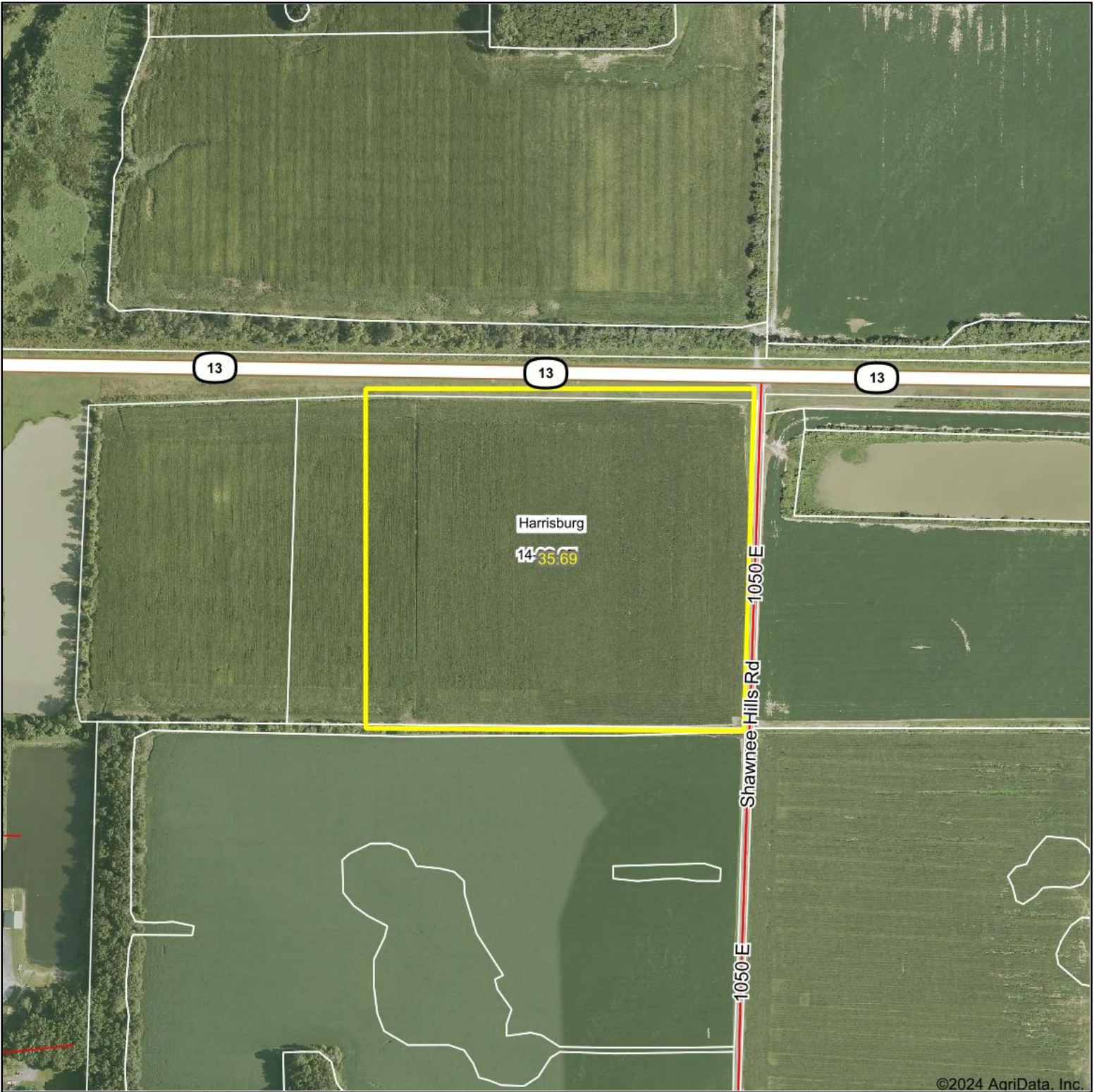
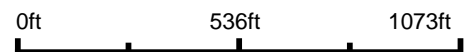


Aerial Map



©2024 AgriData, Inc.

Boundary Center: 37° 44' 10.54, -88° 30' 54.71



14-9S-6E
Saline County
Illinois



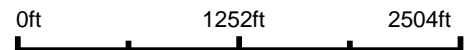
9/18/2024

Aerial Map



©2024 AgriData, Inc.

Boundary Center: 37° 44' 10.54, -88° 30' 54.71



14-9S-6E
Saline County
Illinois



Maps Provided By:

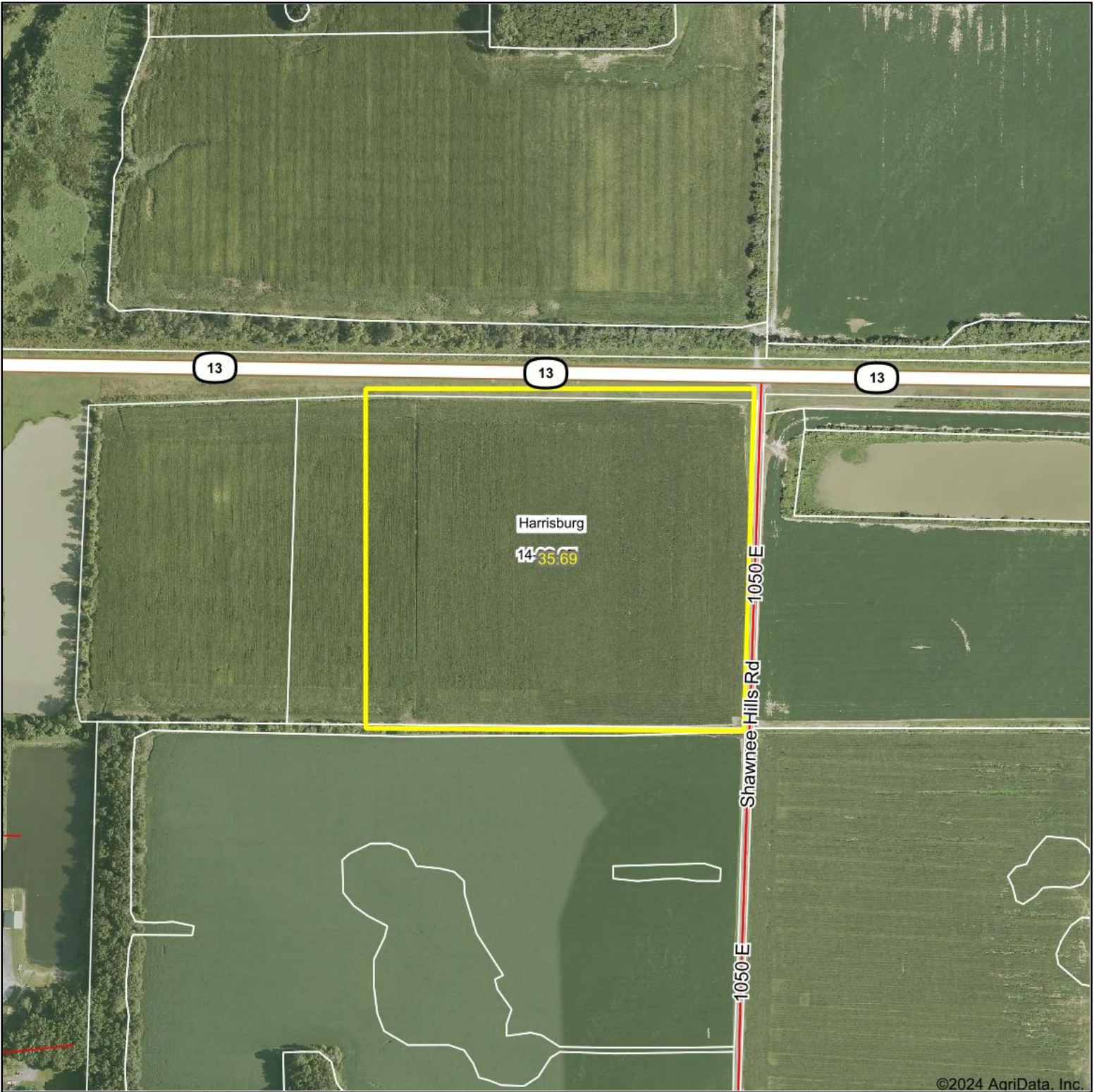


© AgriData, Inc. 2023 www.AgriDataInc.com

9/18/2024

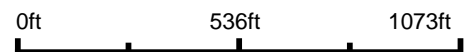
Field borders provided by Farm Service Agency as of 5/21/2008.

Aerial Map



©2024 AgriData, Inc.

Boundary Center: 37° 44' 10.54, -88° 30' 54.71



14-9S-6E
Saline County
Illinois



Maps Provided By:

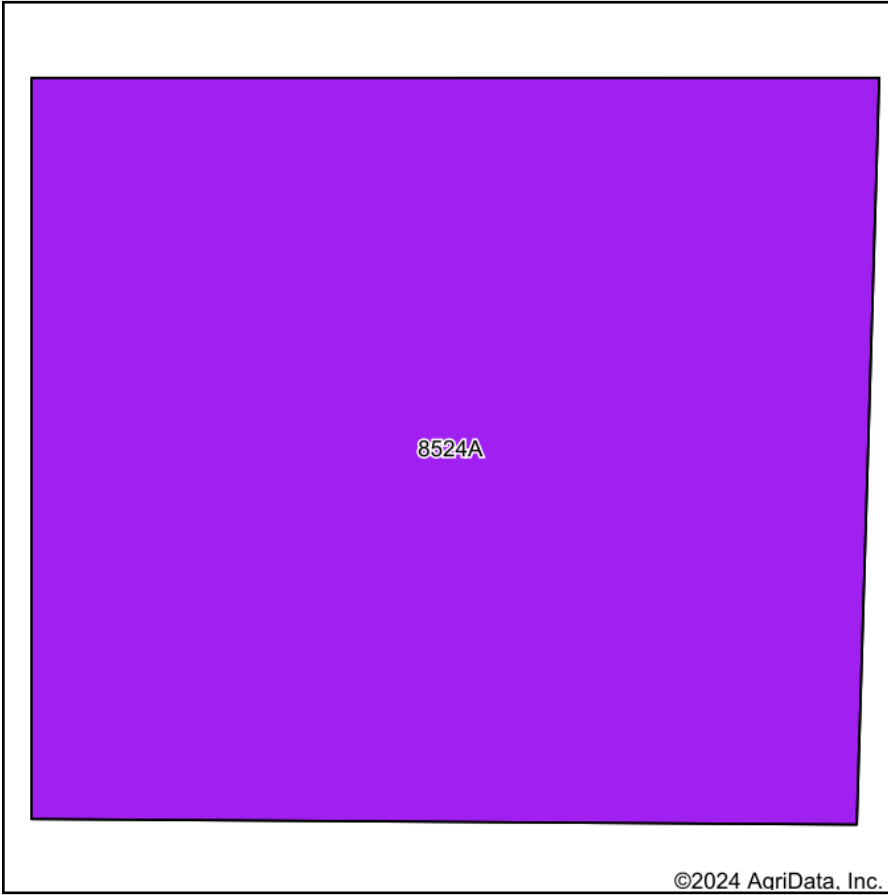


© AgriData, Inc. 2023 www.AgriDataInc.com

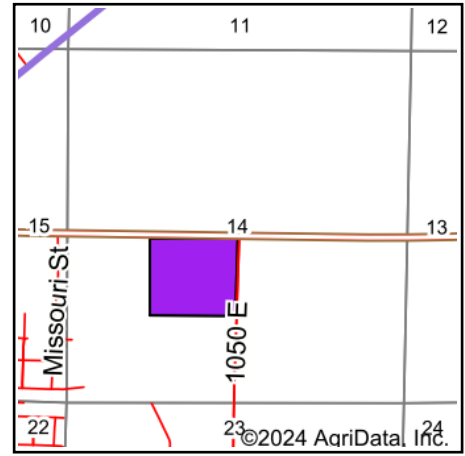
9/18/2024

Field borders provided by Farm Service Agency as of 5/21/2008.

Soils Map



Soils data provided by USDA and NRCS.



State: **Illinois**
 County: **Saline**
 Location: **14-9S-6E**
 Township: **Harrisburg**
 Acres: **35.69**
 Date: **9/18/2024**



Maps Provided By:



Area Symbol: IL165, Soil Area Version: 18

Code	Soil Description	Acres	Percent of field	II. State Productivity Index Legend	Corn Bu/A	Soybeans Bu/A	Wheat Bu/A	Grass-legume hay, T/A	Crop productivity index for optimum management	*n NCCPI Soybeans
**8524A	Zipp silty clay loam, 0 to 2 percent slopes, occasionally flooded	35.69	100.0%		**137	**46	**53	**4.30	**103	67
Weighted Average					137	46	53	4.3	103	*n 67

Table: Optimum Crop Productivity Ratings for Illinois Soil EFOTG are sourced from Bulletin 811 calculated Map Unit Base Yield Indices, and adjusted (Adj) for slope, erosion, flooding, and surface texture. Publication Date: 02-08-2023

Crop yields and productivity (B811 EFOTG) are maintained at the following USDA web site: 2023 Illinois Soil Productivity and Yield Indices:

<https://efotg.sc.egov.usda.gov/#/state/IL/documents/section=2&folder=52809>

** Base indexes from Bulletin 811 adjusted for slope, erosion, flooding, and surface texture according to the II. Soils EFOTG

e Soils in the well drained group were not rated for grass-legume and are shown with a zero "0".

*n: The aggregation method is "Weighted Average using all components"

Topography Contours



©2024 AgriData, Inc.

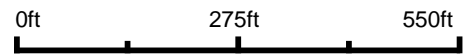


Maps Provided By:



© AgriData, Inc. 2023 www.AgriDataInc.com

Source: USGS 1 meter dem
 Interval(ft): 2.0
 Min: 357.1
 Max: 367.9
 Range: 10.8
 Average: 359.7
 Standard Deviation: 0.49 ft



9/18/2024

14-9S-6E
 Saline County
 Illinois

Boundary Center: 37° 44' 10.54, -88° 30' 54.71

Field borders provided by Farm Service Agency as of 5/21/2008.