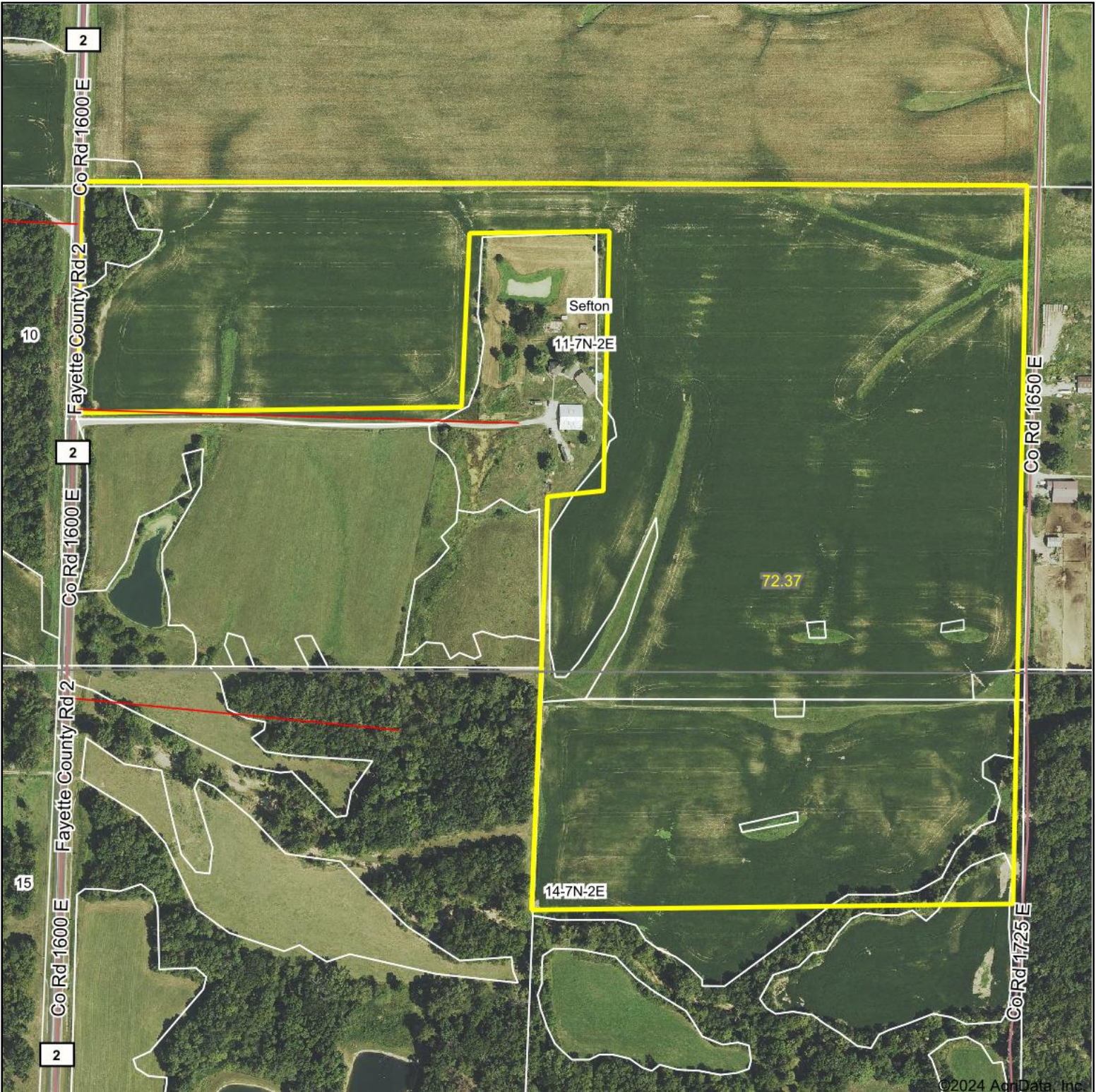


# Aerial Map



Boundary Center: 39° 3' 26.84, -88° 57' 4.1



**11-7N-2E**  
**Fayette County**  
**Illinois**



Maps Provided By:

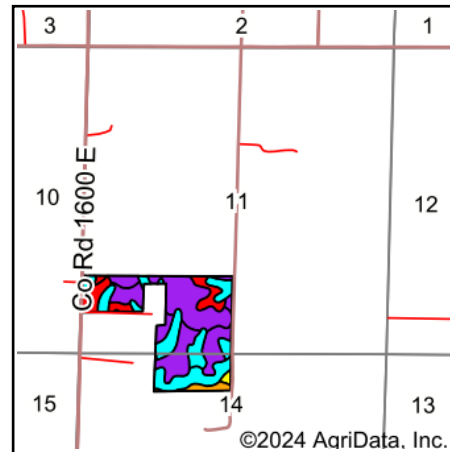
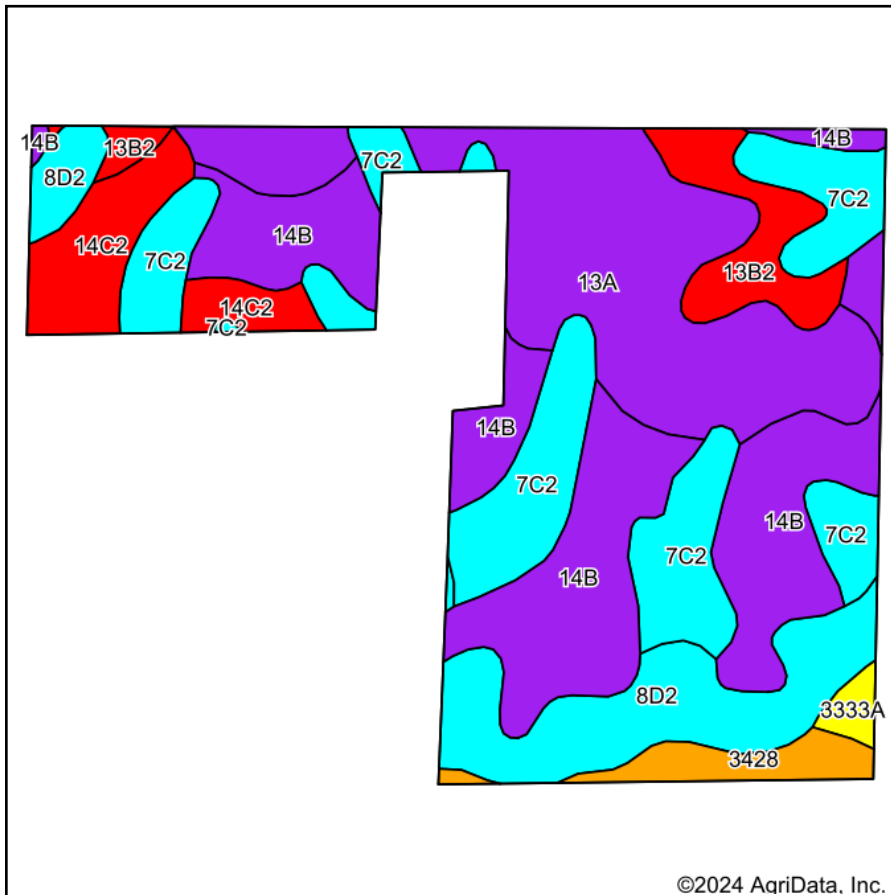


© AgriData, Inc. 2023 www.AgriDataInc.com

8/22/2024

Field borders provided by Farm Service Agency as of 5/21/2008.

# Soils Map



State: **Illinois**  
 County: **Fayette**  
 Location: **11-7N-2E**  
 Township: **Sefton**  
 Acres: **72.37**  
 Date: **8/22/2024**



Soils data provided by USDA and NRCS.

Code	Soil Description	Acres	Percent of field	Il. State Productivity Index Legend	Corn Bu/A	Soybeans Bu/A	Wheat Bu/A	Grass-legume e e hay, T/A	Crop productivity index for optimum management	*n NCCPI Soybeans
**14B	Ava silt loam, 2 to 5 percent slopes	19.84	27.5%		**134	**44	**54	**3.30	**99	55
13A	Bluford silt loam, 0 to 2 percent slopes	17.02	23.5%		136	44	55	3.40	101	62
**7C2	Atlas silt loam, 5 to 10 percent slopes, eroded	14.65	20.2%		**104	**36	**41	**3.10	**80	48
**8D2	Hickory silt loam, 10 to 18 percent slopes, eroded	9.28	12.8%		**107	**37	**44	**3.60	**82	57
**14C2	Ava silt loam, 5 to 10 percent slopes, eroded	4.75	6.6%		**120	**39	**49	**2.90	**89	36
**13B2	Bluford silt loam, 2 to 5 percent slopes, eroded	4.07	5.6%		**129	**42	**52	**3.20	**96	45
**3428	Coffeen silt loam, frequently flooded	2.13	2.9%		**163	**51	**61	**4.90	**119	84
**3333A	Wakeland silt loam, 0 to 2 percent slopes, frequently flooded	0.63	0.9%		**157	**50	**61	**4.60	**115	79
<b>Weighted Average</b>					<b>124.8</b>	<b>41.3</b>	<b>50.1</b>	<b>3.3</b>	<b>93.3</b>	<b>*n 54.7</b>

**Table: Optimum Crop Productivity Ratings for Illinois Soil EFOTG are sourced from Bulletin 811 calculated Map Unit Base Yield Indices, and adjusted (Adj) for slope, erosion, flooding, and surface texture.** Publication Date: 02-08-2023

Crop yields and productivity (B811 EFOTG) are maintained at the following USDA web site: 2023 Illinois Soil Productivity and Yield Indices: <https://efotg.sc.egov.usda.gov/#/state/IL/documents/section=2&folder=52809>

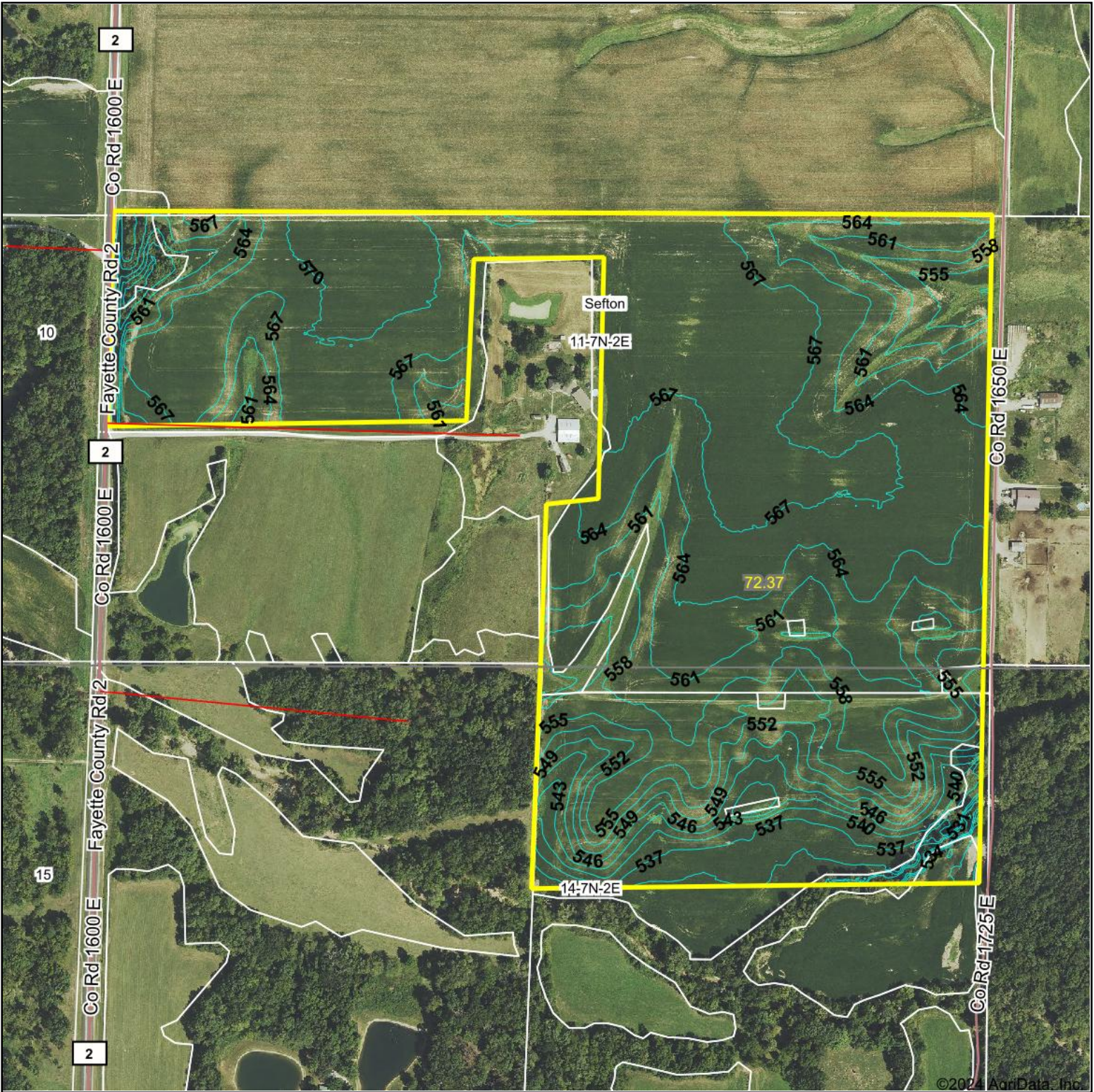
\*\* Base indexes from Bulletin 811 adjusted for slope, erosion, flooding, and surface texture according to the Il. Soils EFOTG

e Soils in the well drained group were not rated for grass-legume and are shown with a zero "0".

\*n: The aggregation method is "Weighted Average using all components"

Soils data provided by USDA and NRCS. Soils data provided by University of Illinois at Champaign-Urbana.

# Topography Contours



©2024 AgriData, Inc.

Source: USGS 1 meter dem

Interval(ft): 3.0

Min: 525.9

Max: 571.4

Range: 45.5

Average: 560.5

Standard Deviation: 9.42 ft

0ft 458ft 915ft



8/22/2024

11-7N-2E  
Fayette County  
Illinois

Boundary Center: 39° 3' 26.84, -88° 57' 4.1



Maps Provided By:



© AgriData, Inc. 2023 www.AgrIDataInc.com

Field borders provided by Farm Service Agency as of 5/21/2008.