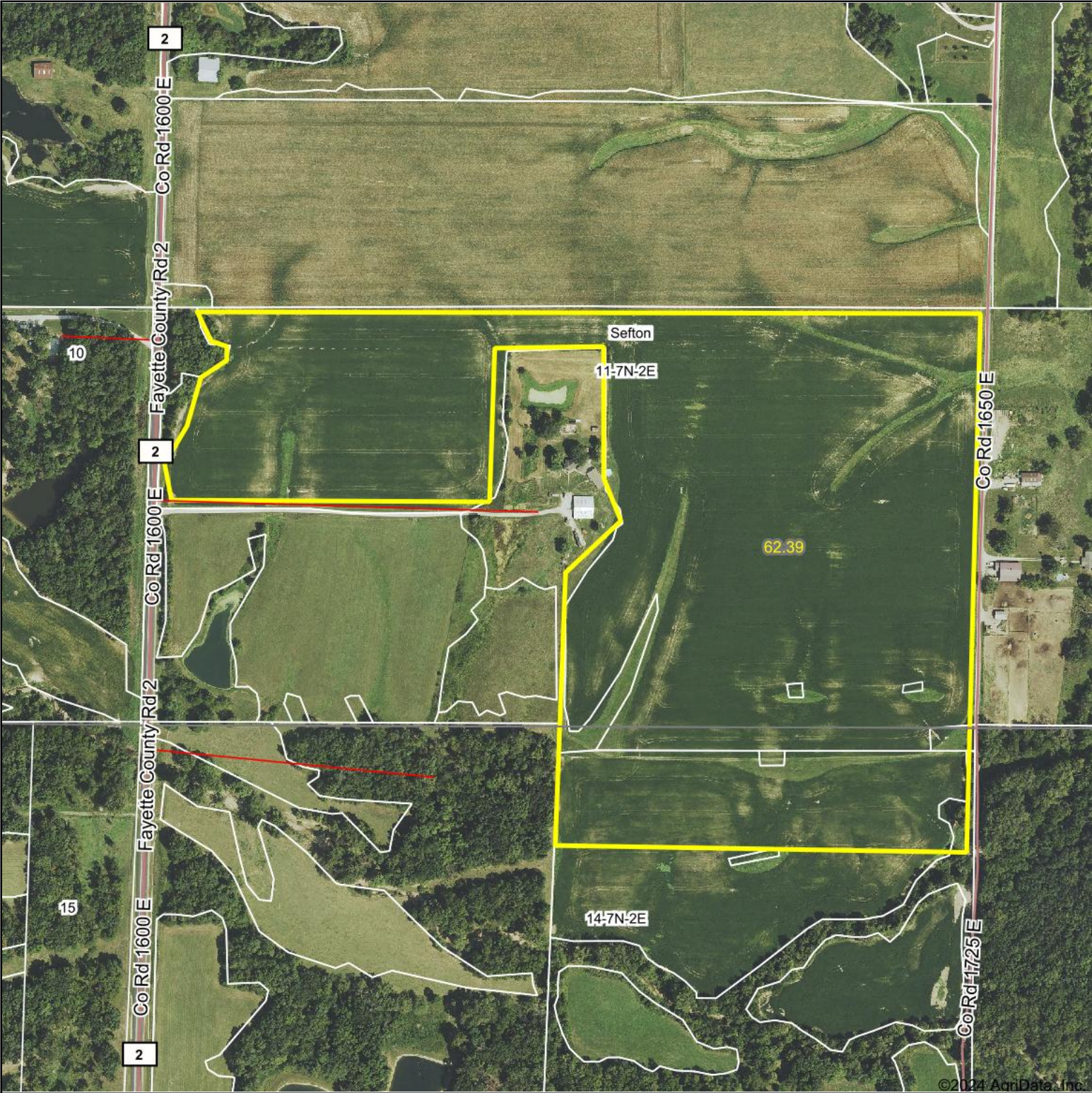


Aerial Map



Boundary Center: 39° 3' 28.09, -88° 57' 3.89

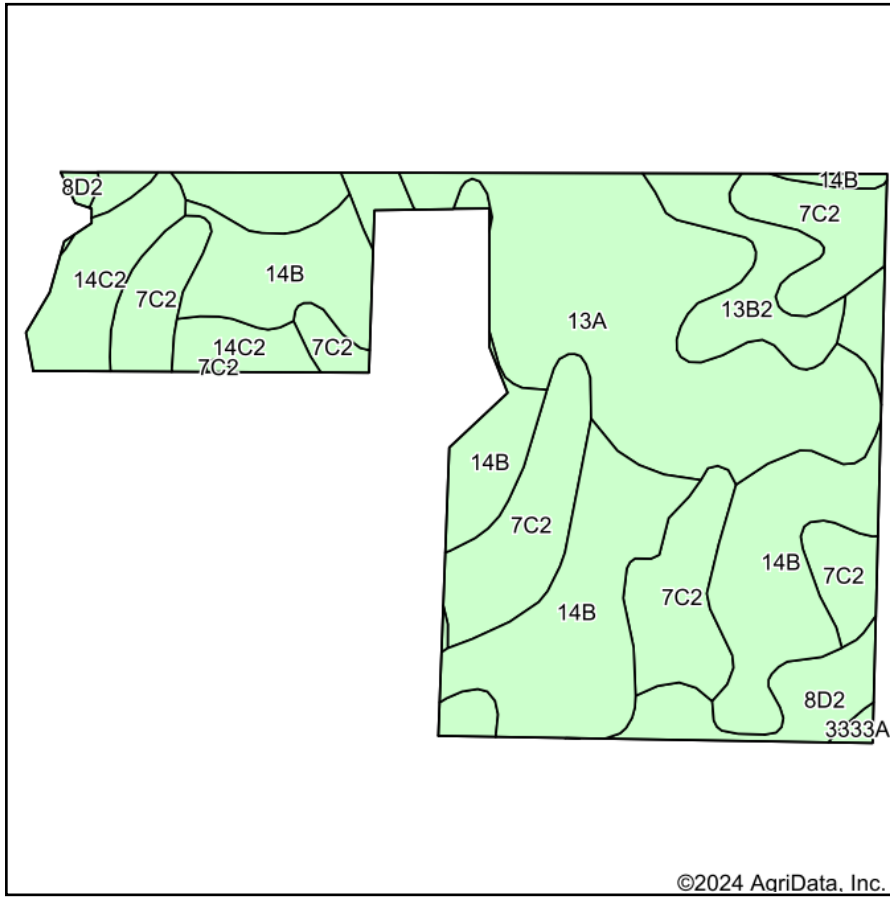


11-7N-2E
Fayette County
Illinois

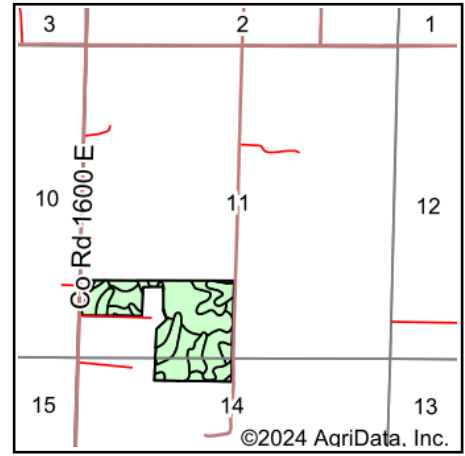


Maps Provided By:
 **surety**[®]
CUSTOMIZED ONLINE MAPPING
© AgriData, Inc. 2023 www.AgriDataInc.com

Soils Map



Soils data provided by USDA and NRCS.



State: **Illinois**
 County: **Fayette**
 Location: **11-7N-2E**
 Township: **Sefton**
 Acres: **62.39**
 Date: **7/9/2024**



Maps Provided By:



Area Symbol: IL051, Soil Area Version: 19

Code	Soil Description	Acres	Percent of field	Corn Bu/A	Soybeans Bu/A	Wheat Bu/A	Grass-legume e hay, T/A	Crop productivity index for optimum management	*n NCCPI Soybeans
**14B	Ava silt loam, 2 to 5 percent slopes	19.43	31.3%	**134	**44	**54	**3.30	**99	55
13A	Bluford silt loam, 0 to 2 percent slopes	16.66	26.7%	136	44	55	3.40	101	62
**7C2	Atlas silt loam, 5 to 10 percent slopes, eroded	14.63	23.4%	**104	**36	**41	**3.10	**80	48
**14C2	Ava silt loam, 5 to 10 percent slopes, eroded	4.32	6.9%	**120	**39	**49	**2.90	**89	36
**13B2	Bluford silt loam, 2 to 5 percent slopes, eroded	3.75	6.0%	**129	**42	**52	**3.20	**96	45
**8D2	Hickory silt loam, 10 to 18 percent slopes, eroded	3.40	5.4%	**107	**37	**44	**3.60	**82	57
**3333A	Wakeland silt loam, 0 to 2 percent slopes, frequently flooded	0.20	0.3%	**157	**50	**61	**4.60	**115	79
Weighted Average				124.8	41.3	50.2	3.3	93.3	*n 53.5

Table: Optimum Crop Productivity Ratings for Illinois Soil EFOTG are sourced from Bulletin 811 calculated Map Unit Base Yield Indices, and adjusted (Adj) for slope, erosion, flooding, and surface texture. Publication Date: 02-08-2023

Crop yields and productivity (B811 EFOTG) are maintained at the following USDA web site: 2023 Illinois Soil Productivity and Yield Indices:

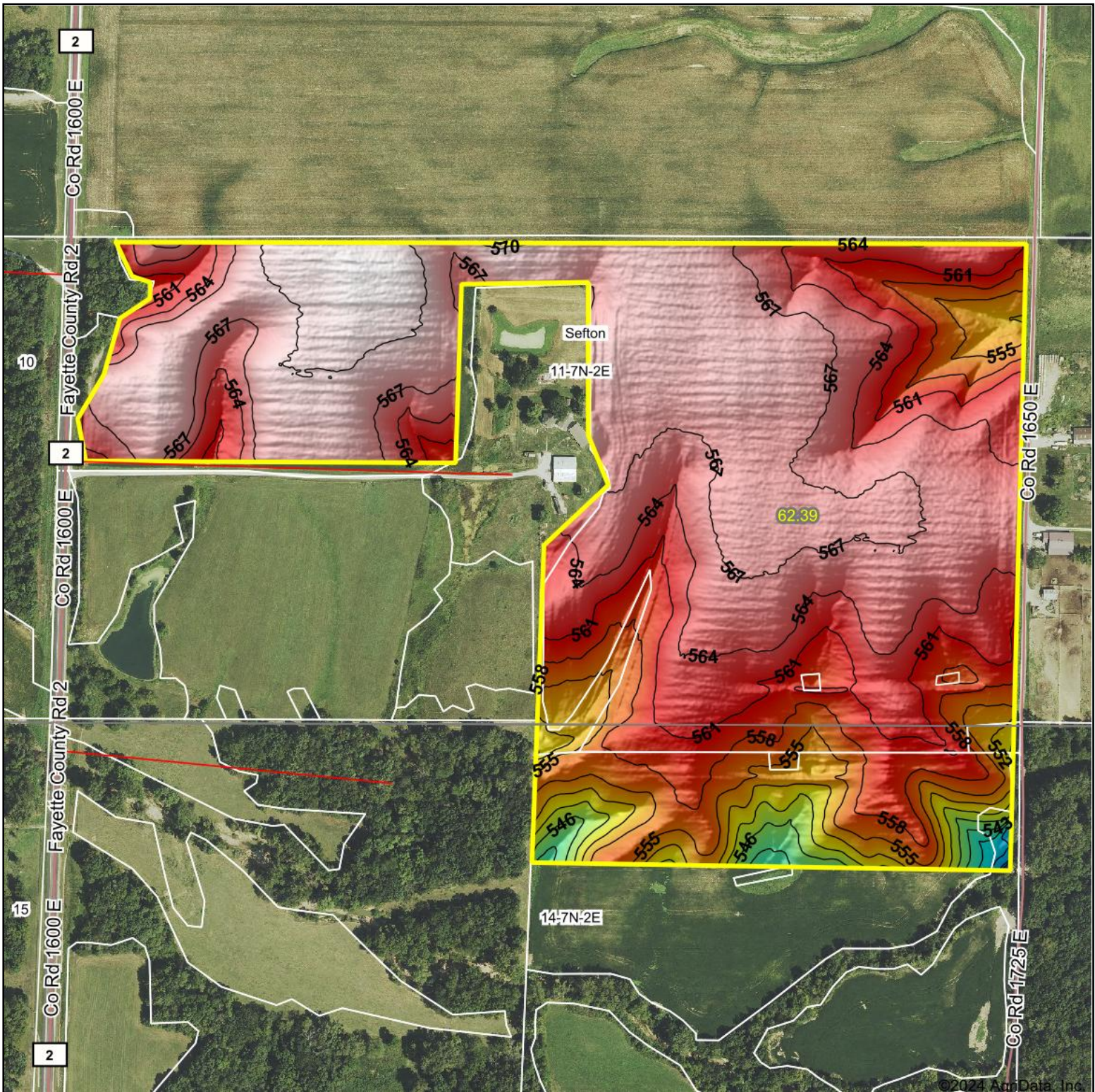
<https://efotg.sc.egov.usda.gov/#/state/IL/documents/section=2&folder=52809>

** Base indexes from Bulletin 811 adjusted for slope, erosion, flooding, and surface texture according to the Il. Soils EFOTG

e Soils in the well drained group were not rated for grass-legume and are shown with a zero "0".

*n: The aggregation method is "Weighted Average using all components"

Topography Hillshade



Source: USGS 1 meter dem

Interval(ft): 3

Min: 528.8

Max: 571.4

Range: 42.6

Average: 563.0

Standard Deviation: 6.04 ft



7/9/2024

11-7N-2E
Fayette County
Illinois

Boundary Center: 39° 3' 28.09, -88° 57' 3.89



Maps Provided By:

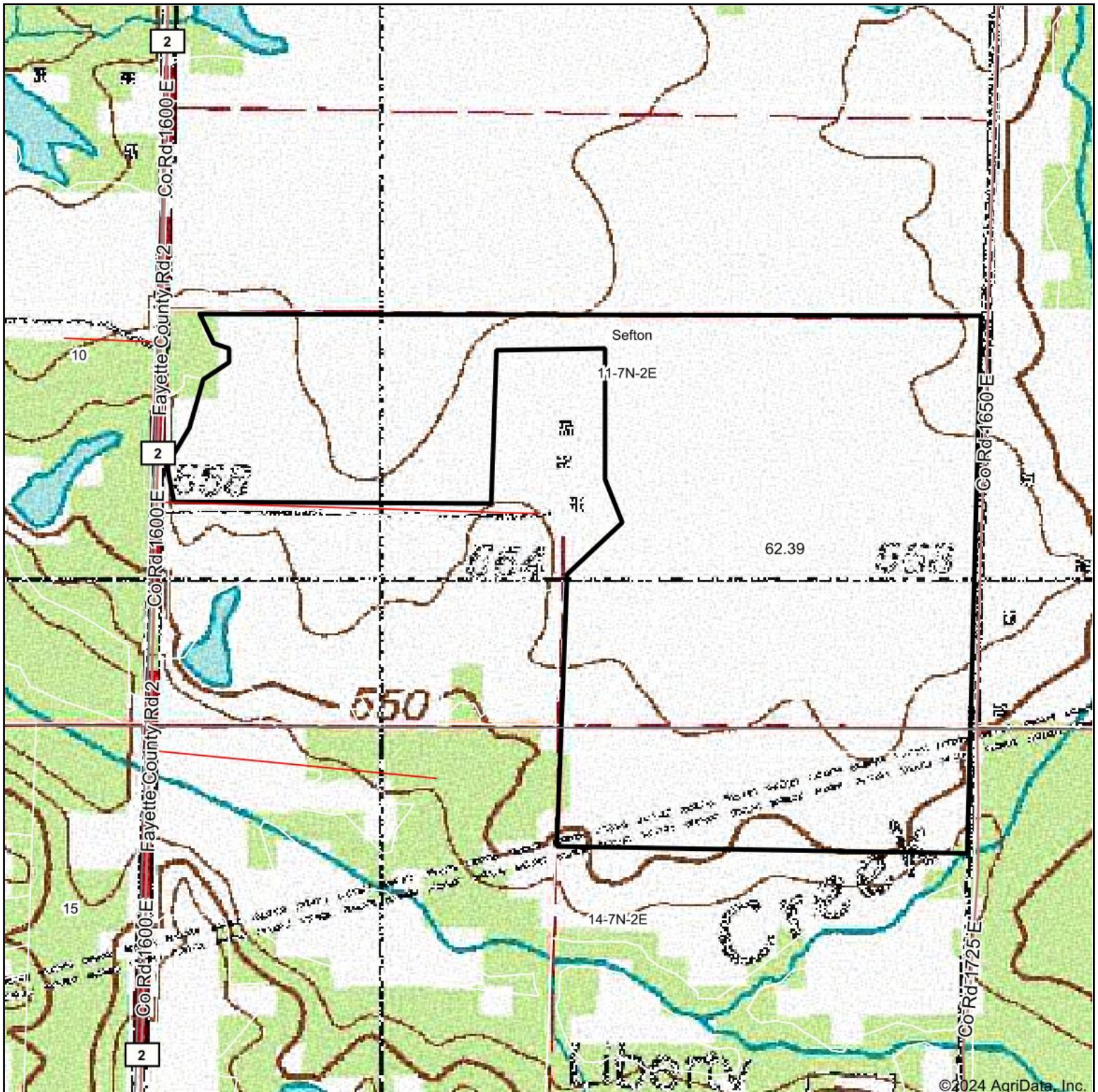


© AgriData, Inc. 2023

www.AgriDataInc.com

Field borders provided by Farm Service Agency as of 5/21/2008.

Topography Map



Map Center: 39° 3' 28.97, -88° 57' 4.79

0ft 494ft 988ft

11-7N-2E
Fayette County
Illinois



Maps Provided By:



© AgriData, Inc. 2023

www.AgriDataInc.com

Field borders provided by Farm Service Agency as of 5/21/2008.