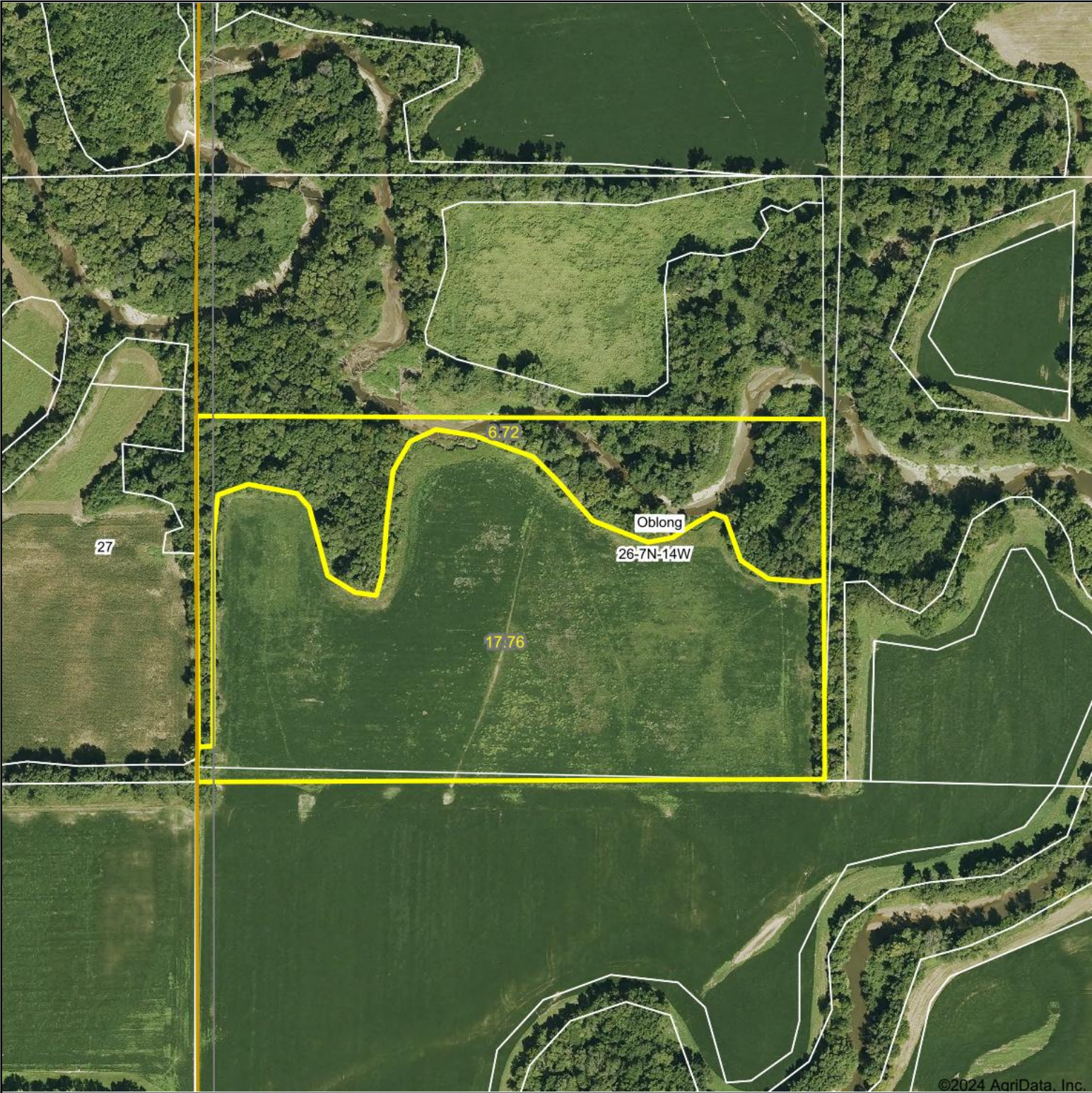


Aerial Map

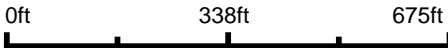


©2024 AgriData, Inc.



Maps Provided By:
 **surety**[®]
CUSTOMIZED ONLINE MAPPING
© AgriData, Inc. 2023 www.AgriDataInc.com

Boundary Center: 39° 1' 6.74, -87° 56' 38.34



26-7N-14W
Crawford County
Illinois

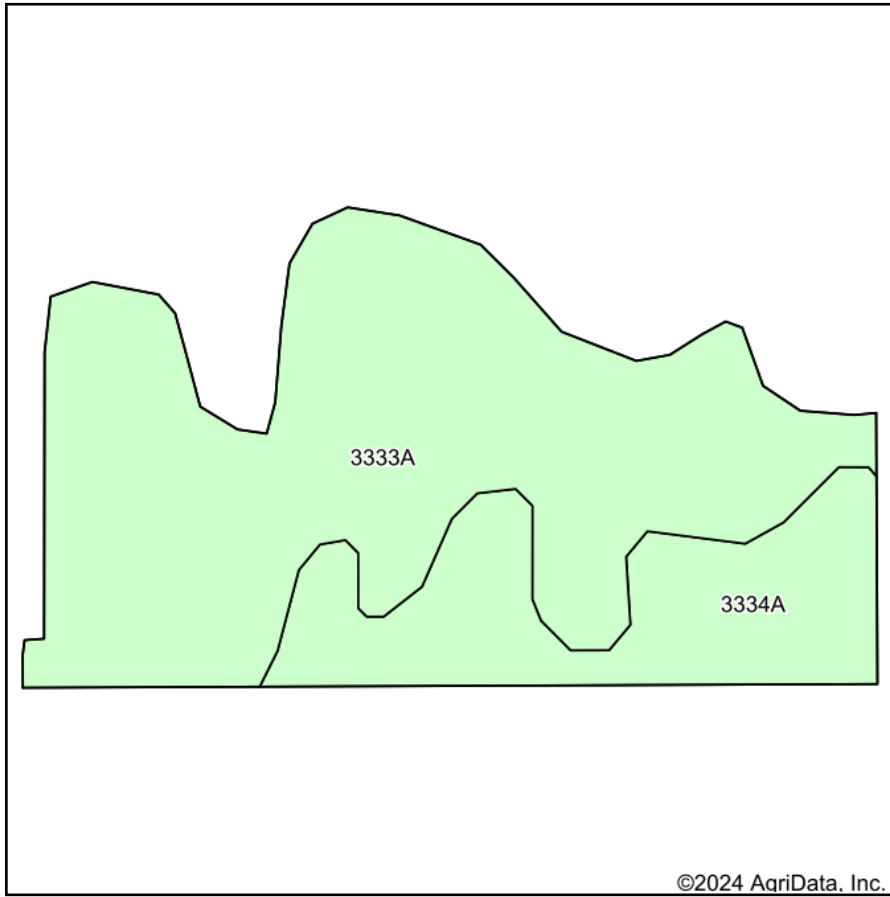


5/15/2024

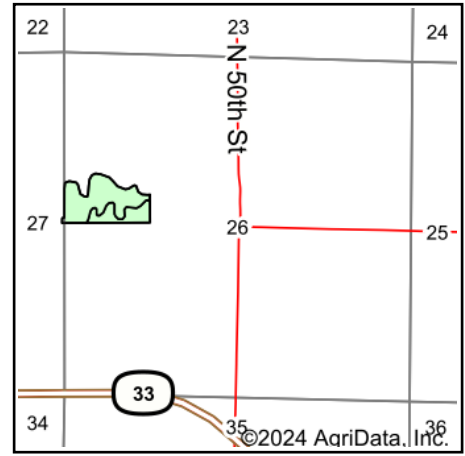


Distance Boundary

Soils Map



Soils data provided by USDA and NRCS.



State: **Illinois**
 County: **Crawford**
 Location: **26-7N-14W**
 Township: **Oblong**
 Acres: **17.76**
 Date: **5/15/2024**



Maps Provided By:



Area Symbol: IL033, Soil Area Version: 21

Code	Soil Description	Acres	Percent of field	Corn Bu/A	Soybeans Bu/A	Wheat Bu/A	Grass-legume e hay, T/A	Crop productivity index for optimum management	*n NCCPI Soybeans
**3333A	Wakeland silt loam, 0 to 2 percent slopes, frequently flooded	13.10	73.8%	**157	**50	**61	**4.60	**115	79
**3334A	Birds silt loam, 0 to 2 percent slopes, frequently flooded	4.66	26.2%	**141	**46	**55	**4.40	**105	53
Weighted Average				152.8	49	59.4	4.5	112.4	*n 72.2

Table: Optimum Crop Productivity Ratings for Illinois Soil EFOTG are sourced from Bulletin 811 calculated Map Unit Base Yield Indices, and adjusted (Adj) for slope, erosion, flooding, and surface texture. Publication Date: 02-08-2023

Crop yields and productivity (B811 EFOTG) are maintained at the following USDA web site: 2023 Illinois Soil Productivity and Yield Indices: <https://efotg.sc.egov.usda.gov/#/state/IL/documents/section=2&folder=52809>

** Base indexes from Bulletin 811 adjusted for slope, erosion, flooding, and surface texture according to the II. Soils EFOTG

e Soils in the well drained group were not rated for grass-legume and are shown with a zero "0".

*n: The aggregation method is "Weighted Average using all components"

Topography Contours



©2024 AgriData, Inc.



Maps Provided By:



© AgriData, Inc. 2023

www.AgriDataInc.com

Source: USGS 10 meter dem
Interval(ft): 2.0
Min: 472.5
Max: 476.2
Range: 3.7
Average: 474.5
Standard Deviation: 0.56 ft

0ft 281ft 562ft

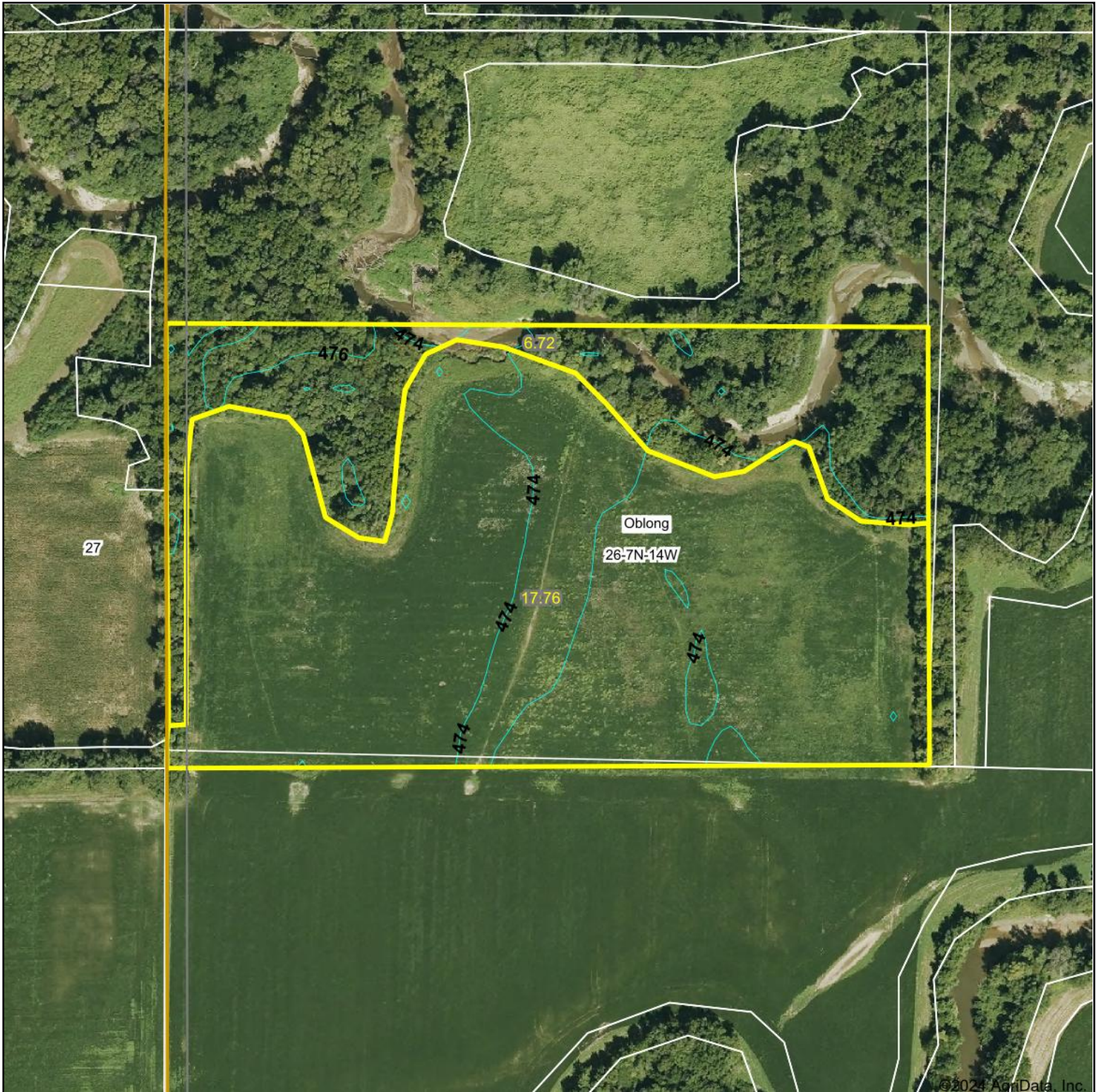


5/15/2024

26-7N-14W
Crawford County
Illinois

Boundary Center: 39° 1' 5.96, -87° 56' 38.25

Topography Contours



Maps Provided By:



© AgriData, Inc. 2023

www.AgridataInc.com

Source: USGS 10 meter dem
Interval(ft): 2.0
Min: 472.5
Max: 476.6
Range: 4.1
Average: 474.4
Standard Deviation: 0.72 ft

0ft 277ft 555ft



5/15/2024

26-7N-14W
Crawford County
Illinois

Boundary Center: 39° 1' 6.74, -87° 56' 38.34

Field borders provided by Farm Service Agency as of 5/21/2008.