

Aerial Map



©2024 AgriData, Inc.

Boundary Center: 37° 52' 55.17, -89° 41' 28.93



31-7S-5W
Randolph County
Illinois



Maps Provided By:

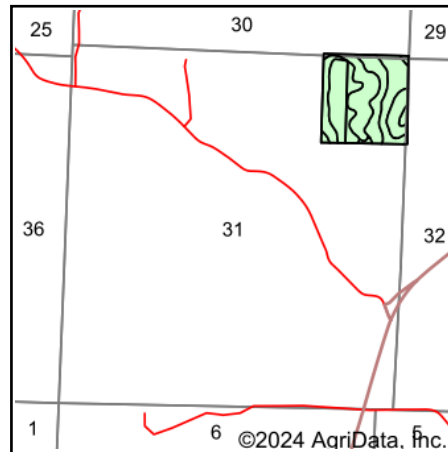
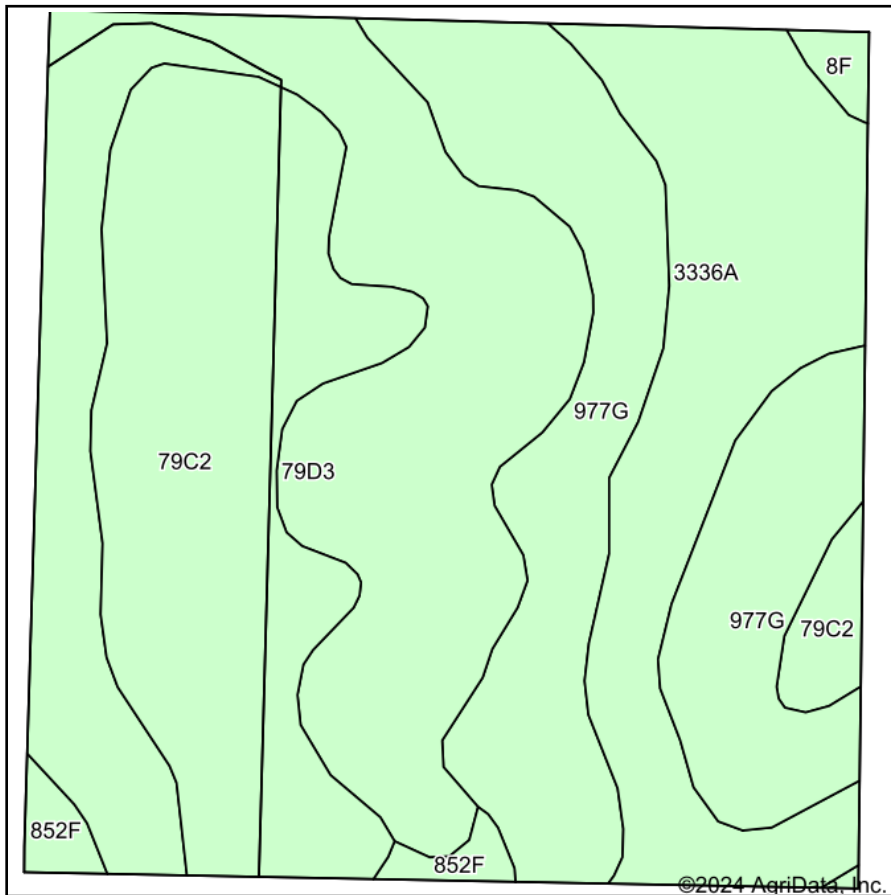


© AgriData, Inc. 2023 www.AgriDataInc.com

2/29/2024

Field borders provided by Farm Service Agency as of 5/21/2008.

Soils Map



State: **Illinois**
 County: **Randolph**
 Location: **31-7S-5W**
 Township: **Rockwood**
 Acres: **39.17**
 Date: **2/29/2024**



Soils data provided by USDA and NRCS.

Area Symbol: IL157, Soil Area Version: 17

Code	Soil Description	Acres	Percent of field	Corn Bu/A	Soybeans Bu/A	Wheat Bu/A	Crop productivity index for optimum management	*n NCCPI Soybeans
**79D3	Menfro silty clay loam, 10 to 18 percent slopes, severely eroded	11.97	30.6%	**130	**40	**50	**95	1
**79C2	Menfro silt loam, 5 to 10 percent slopes, eroded	10.11	25.8%	**153	**47	**59	**112	1
**977G	Neotoma-Wellston complex, 35 to 60 percent slopes	9.19	23.5%	**26	**9	**11	**20	
**3336A	Wilbur silt loam, 0 to 2 percent slopes, frequently flooded	7.05	18.0%	**157	**50	**59	**115	69
**852F	Menfro-Wellston silt loam, 18 to 35 percent slopes	0.60	1.5%	**101	**33	**39	**74	1
**8F	Hickory silt loam, 18 to 35 percent slopes	0.25	0.6%	**89	**30	**36	**68	14
Weighted Average				115.7	36.2	44.5	84.9	*n 13.1

Table: Optimum Crop Productivity Ratings for Illinois Soil EFOTG are sourced from Bulletin 811 calculated Map Unit Base Yield Indices, and adjusted (Adj) for slope, erosion, flooding, and surface texture. Publication Date: 02-08-2023

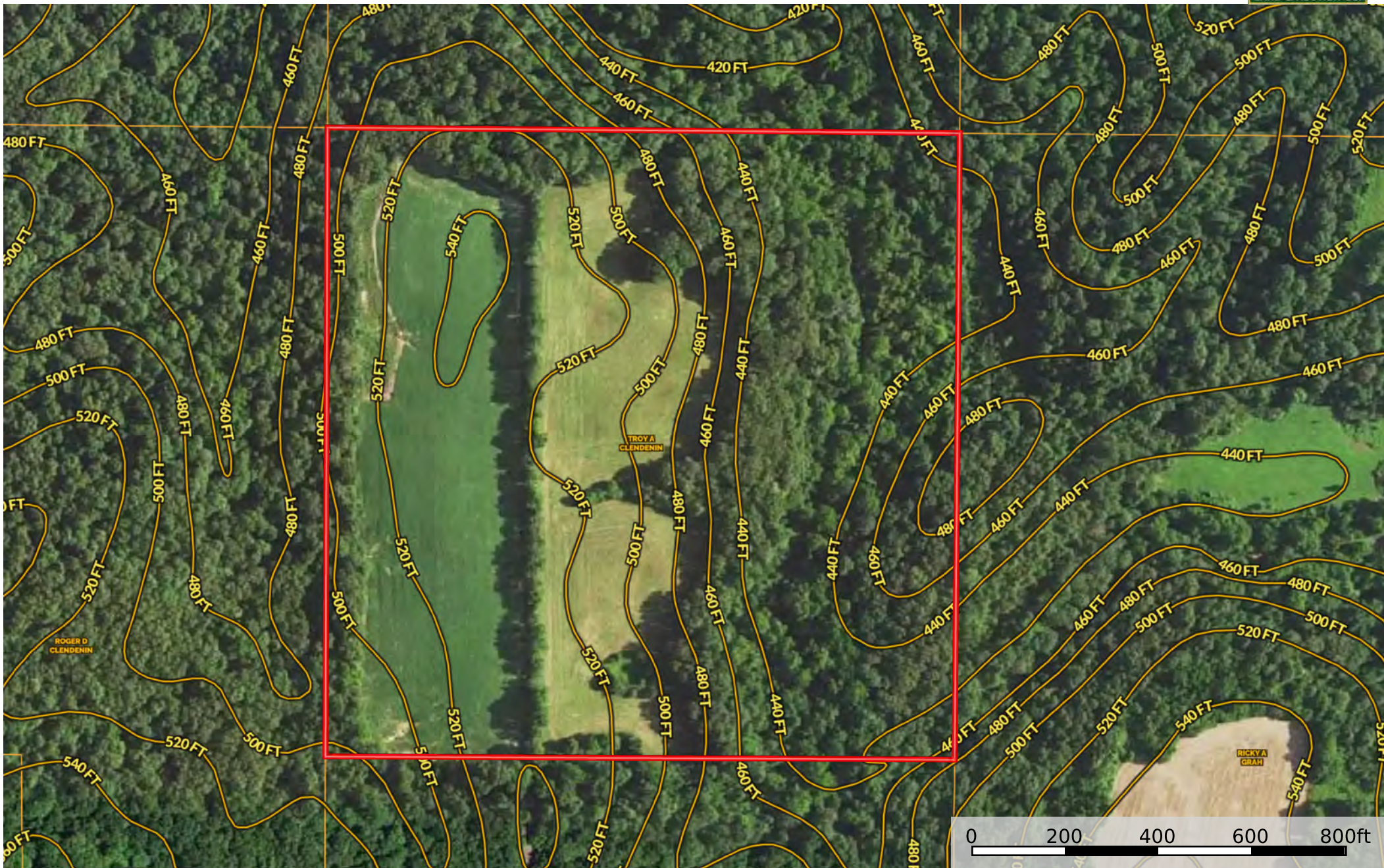
Crop yields and productivity (B811 EFOTG) are maintained at the following USDA web site: 2023 Illinois Soil Productivity and Yield Indices: <https://efotg.sc.egov.usda.gov/#/state/IL/documents/section=2&folder=52809>


** Base indexes from Bulletin 811 adjusted for slope, erosion, flooding, and surface texture according to the IL Soils EFOTG

*n: The aggregation method is "Weighted Average using all components"

Randolph Troy Clendennin

Illinois, 40 AC +/-



 Boundary