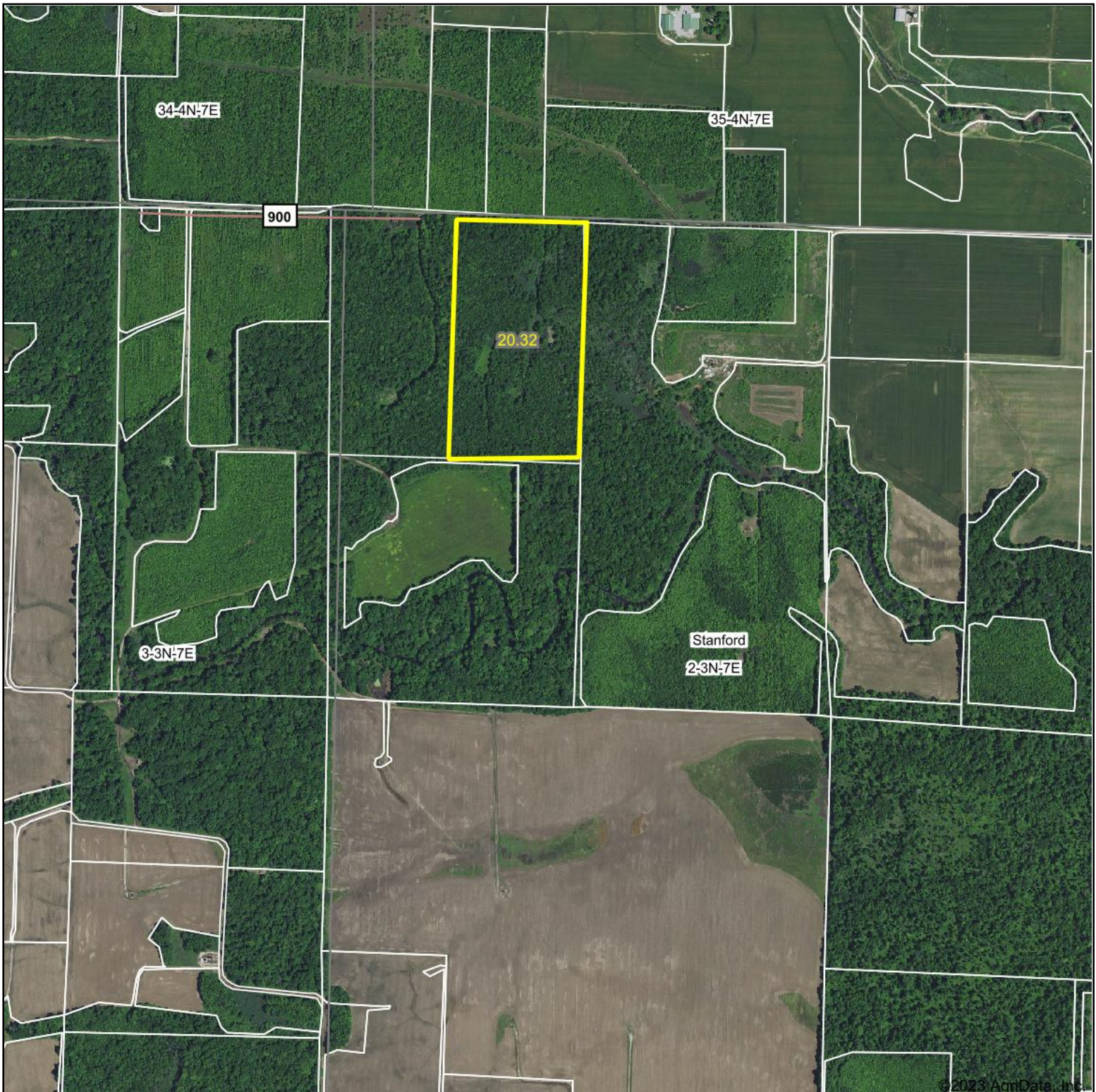


Aerial Map



©2023 AgriData, Inc.

Boundary Center: 38° 44' 1.47, -88° 23' 48.75

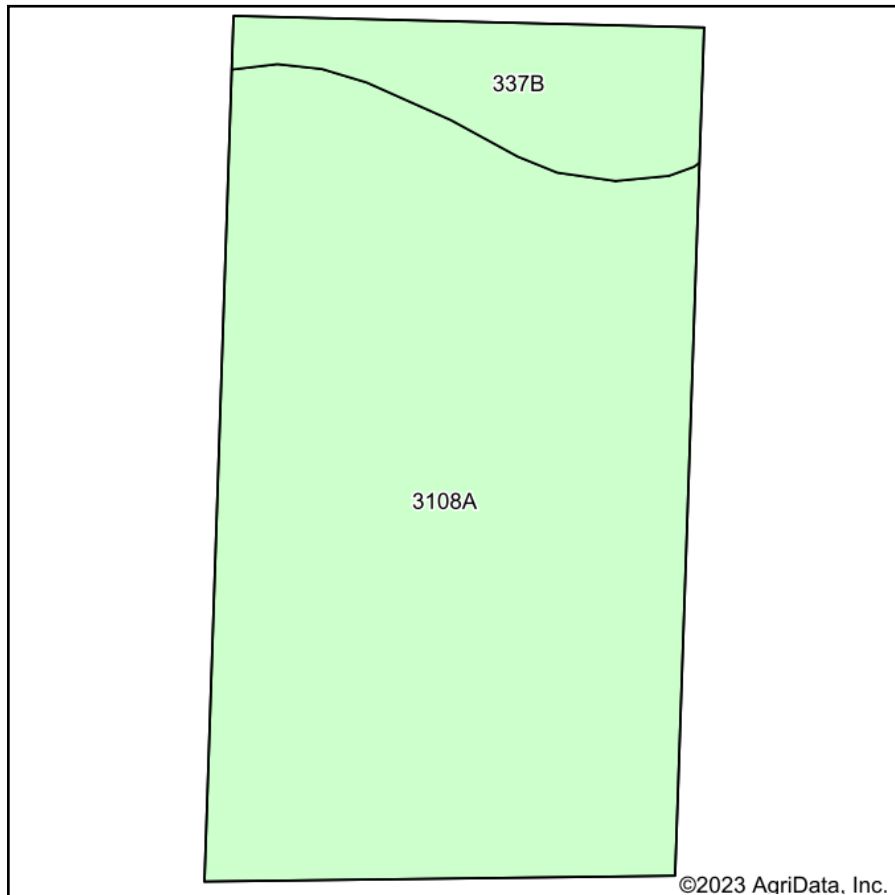


2-3N-7E
Clay County
Illinois

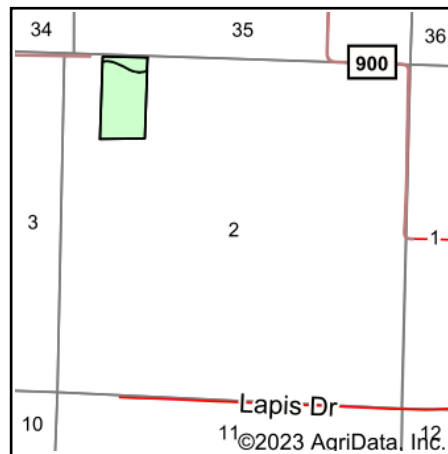


11/29/2023

Soils Map



Soils data provided by USDA and NRCS.



State: **Illinois**
 County: **Clay**
 Location: **2-3N-7E**
 Township: **Stanford**
 Acres: **20.32**
 Date: **11/29/2023**



Maps Provided By:



© AgriData, Inc. 2023

www.AgriDataInc.com



Area Symbol: IL025, Soil Area Version: 18

Code	Soil Description	Acres	Percent of field	Corn Bu/A	Soybeans Bu/A	Wheat Bu/A	Grass-legume e hay, T/A	Crop productivity index for optimum management
**3108A	Bonnie silt loam, 0 to 2 percent slopes, frequently flooded	17.86	87.9%	**134	**44	**53	**4.14	**100
**337B	Creal silt loam, 2 to 5 percent slopes	2.46	12.1%	**149	**47	**58	0.00	**109
Weighted Average				135.8	44.4	53.6	3.6	101.1

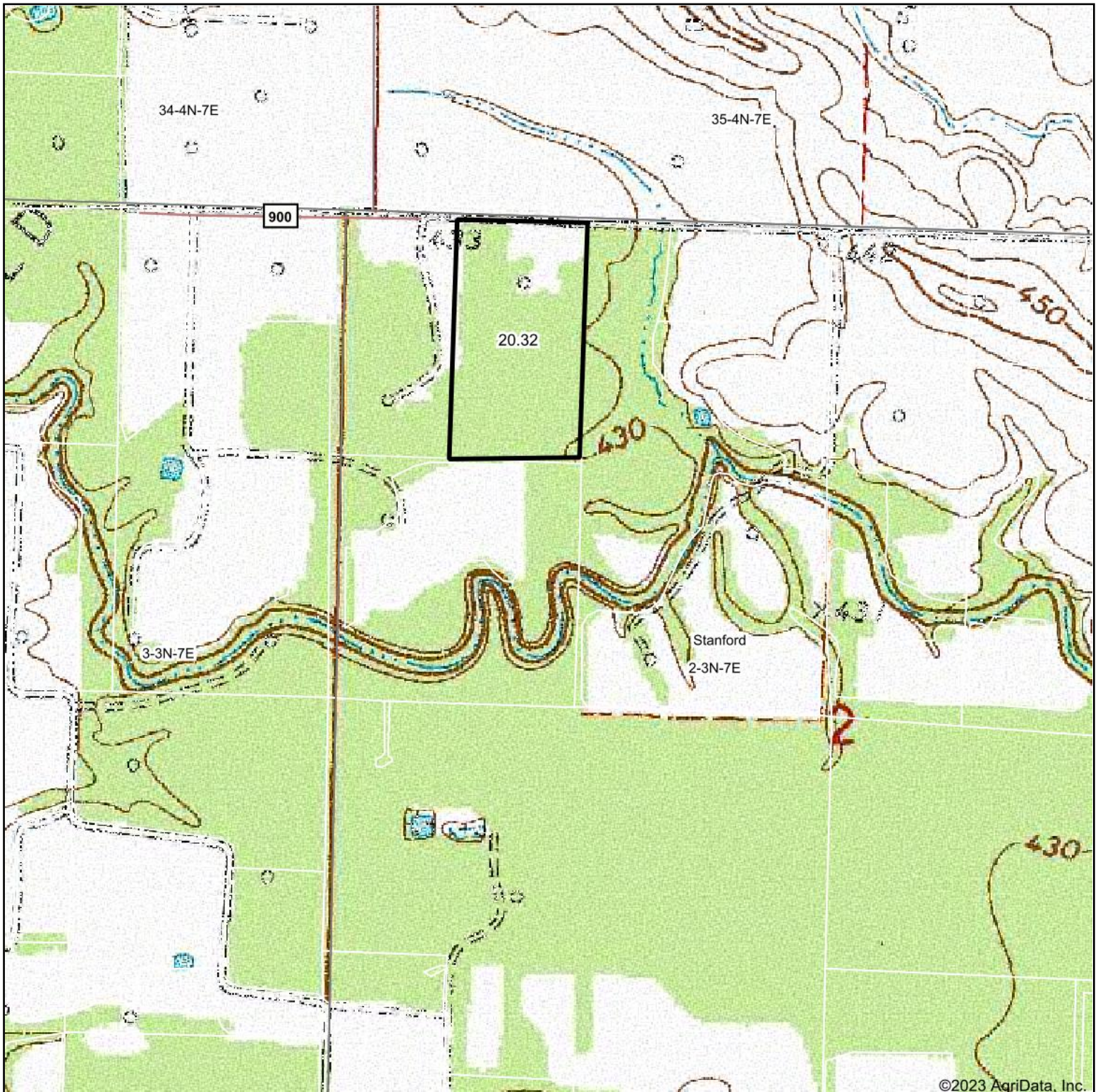
Table: Optimum Crop Productivity Ratings for Illinois Soil EFOTG are sourced from Bulletin 811 calculated Map Unit Base Yield Indices, and adjusted (Adj) for slope, erosion, flooding, and surface texture. Publication Date: 02-08-2023

Crop yields and productivity (B811 EFOTG) are maintained at the following USDA web site: 2023 Illinois Soil Productivity and Yield Indices: <https://efotg.sc.egov.usda.gov/#/state/IL/documents/section=2&folder=52809>

e Soils in the well drained group were not rated for grass-legume and are shown with a zero "0".

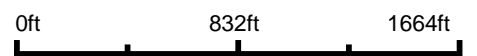
Soils data provided by USDA and NRCS. Soils data provided by University of Illinois at Champaign-Urbana.

Topography Map

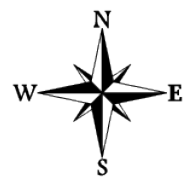


©2023 AgriData, Inc.

Map Center: 38° 43' 50.49, -88° 23' 46.52



2-3N-7E
Clay County
Illinois



11/29/2023

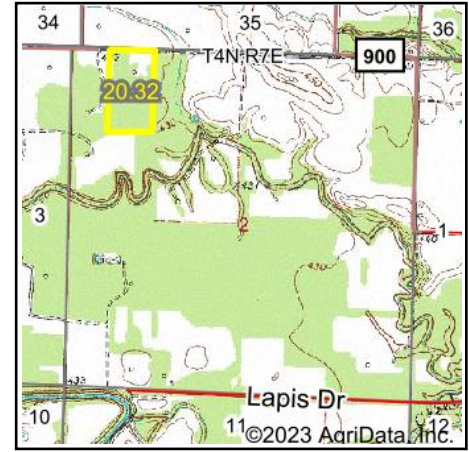
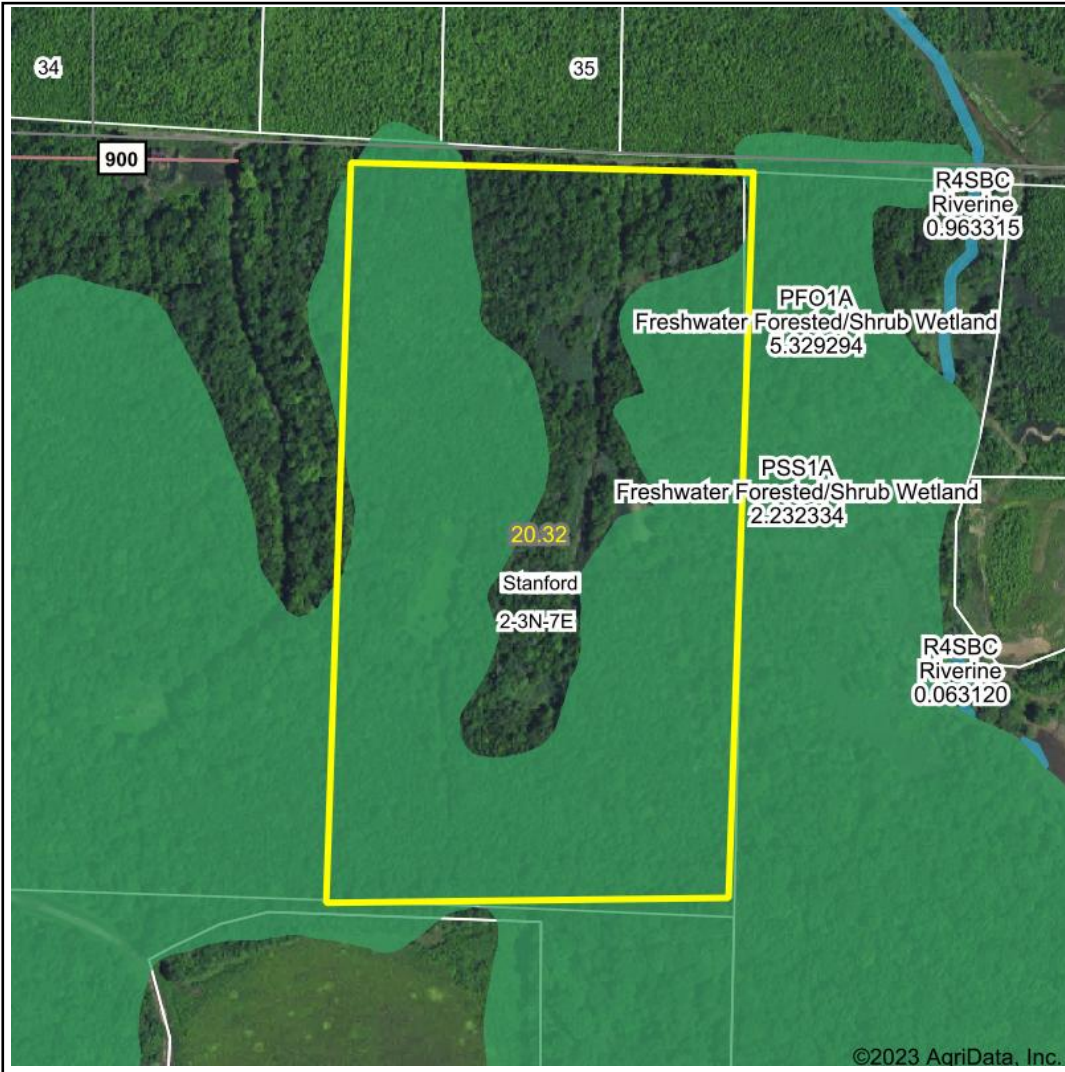


Maps Provided By:



© AgriData, Inc. 2023 www.AgriDataInc.com

Wetlands Map



State: Illinois
Location: 2-3N-7E
County: Clay
Township: Stanford
Date: 11/29/2023



Maps Provided By:



© AgriData, Inc. 2023 www.AgriDataInc.com



0ft 382ft 763ft

Classification Code	Type	Acres
PFO1A	Freshwater Forested/Shrub Wetland	14.22
PSS1A	Freshwater Forested/Shrub Wetland	0.79
Total Acres		15.01

Data Source: National Wetlands Inventory website. U.S. DoI, Fish and Wildlife Service, Washington, D.C. <http://www.fws.gov/wetlands/>