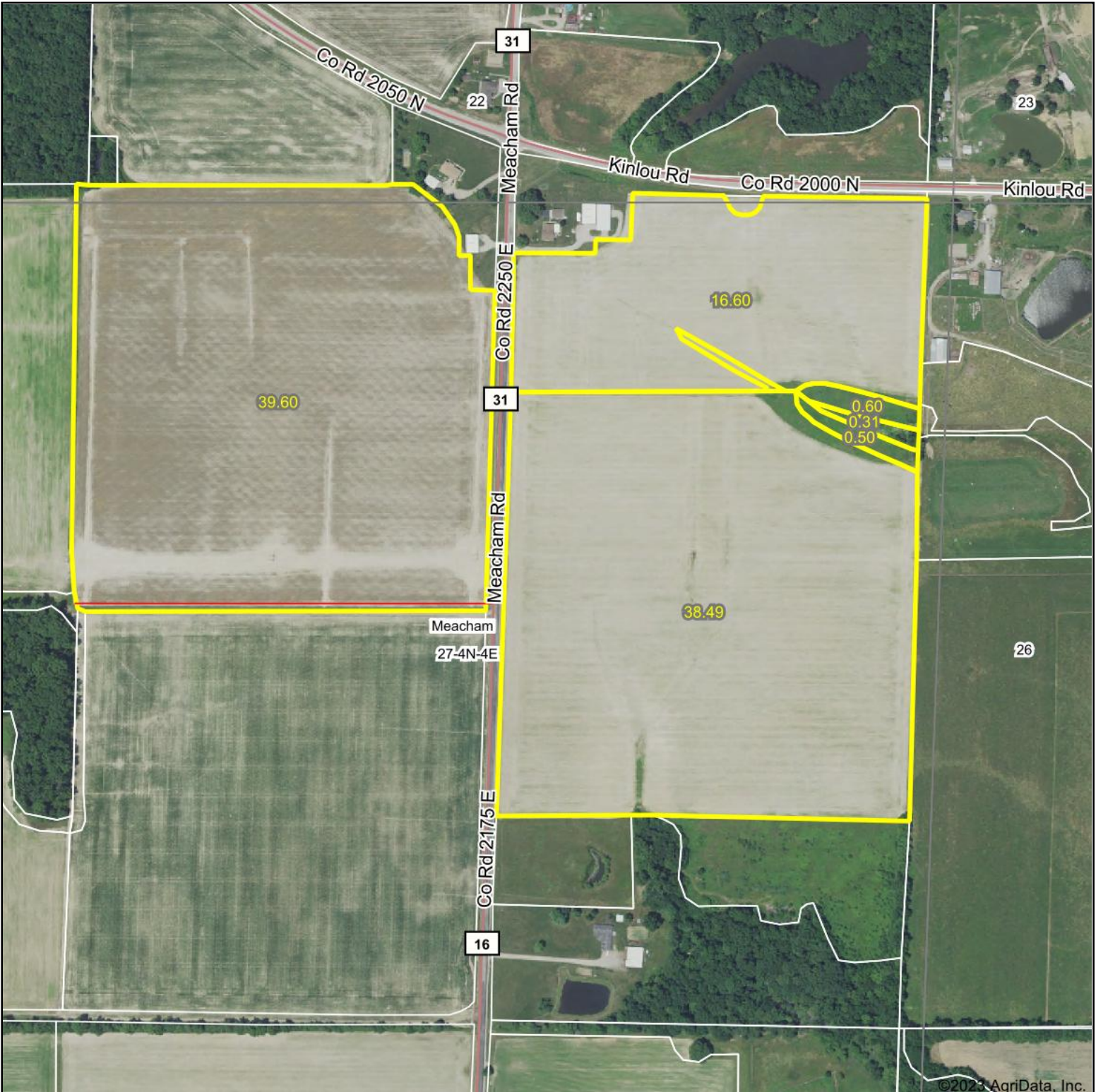
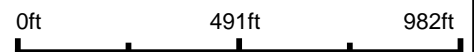


Aerial Map



Boundary Center: 38° 45' 50.13, -88° 44' 17.67



27-4N-4E
Marion County
Illinois



Maps Provided By:

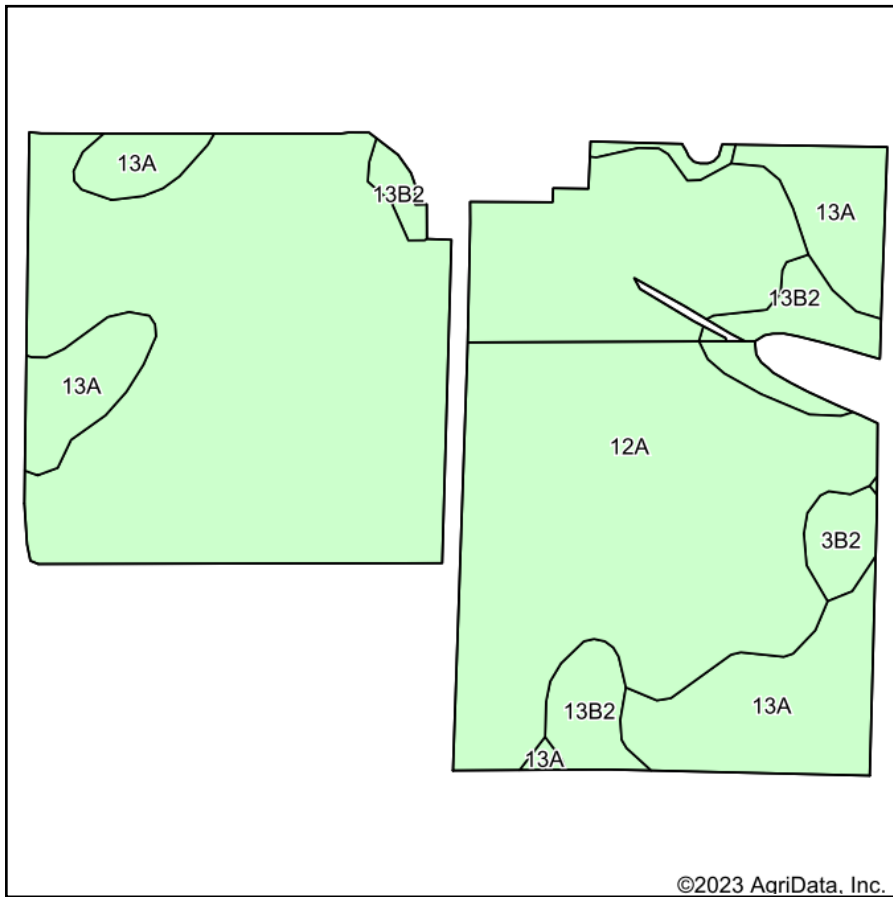


© AgriData, Inc. 2023 www.AgriDataInc.com

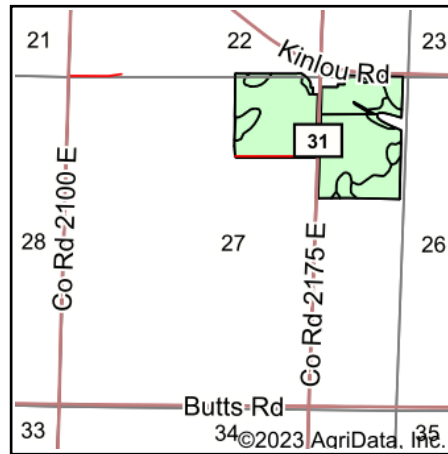
9/8/2023

Field borders provided by Farm Service Agency as of 5/21/2008.

Soils Map



Soils data provided by USDA and NRCS.



State: **Illinois**
 County: **Marion**
 Location: **27-4N-4E**
 Township: **Meacham**
 Acres: **94.69**
 Date: **9/8/2023**



Maps Provided By:



Area Symbol: IL121, Soil Area Version: 19

Code	Soil Description	Acres	Percent of field	Corn Bu/A	Soybeans Bu/A	Wheat Bu/A	Grass-legume e hay, T/A	Crop productivity index for optimum management
12A	Wynoose silt loam, 0 to 2 percent slopes	73.36	77.5%	128	42	51	4.26	97
13A	Bluford silt loam, 0 to 2 percent slopes	14.19	15.0%	136	44	55	3.39	101
**13B2	Bluford silt loam, 2 to 5 percent slopes, eroded	5.71	6.0%	**129	**42	**52	**3.22	**96
**3B2	Hoyleton silt loam, 2 to 5 percent slopes, eroded	1.43	1.5%	**139	**44	**55	**4.41	**103
Weighted Average				129.4	42.3	51.7	4.07	97.6

Table: Optimum Crop Productivity Ratings for Illinois Soil by K.R. Olson and J.M. Lang, Office of Research, ACES, University of Illinois at Champaign-Urbana. Version: 1/2/2012 Amended Table S2 B811

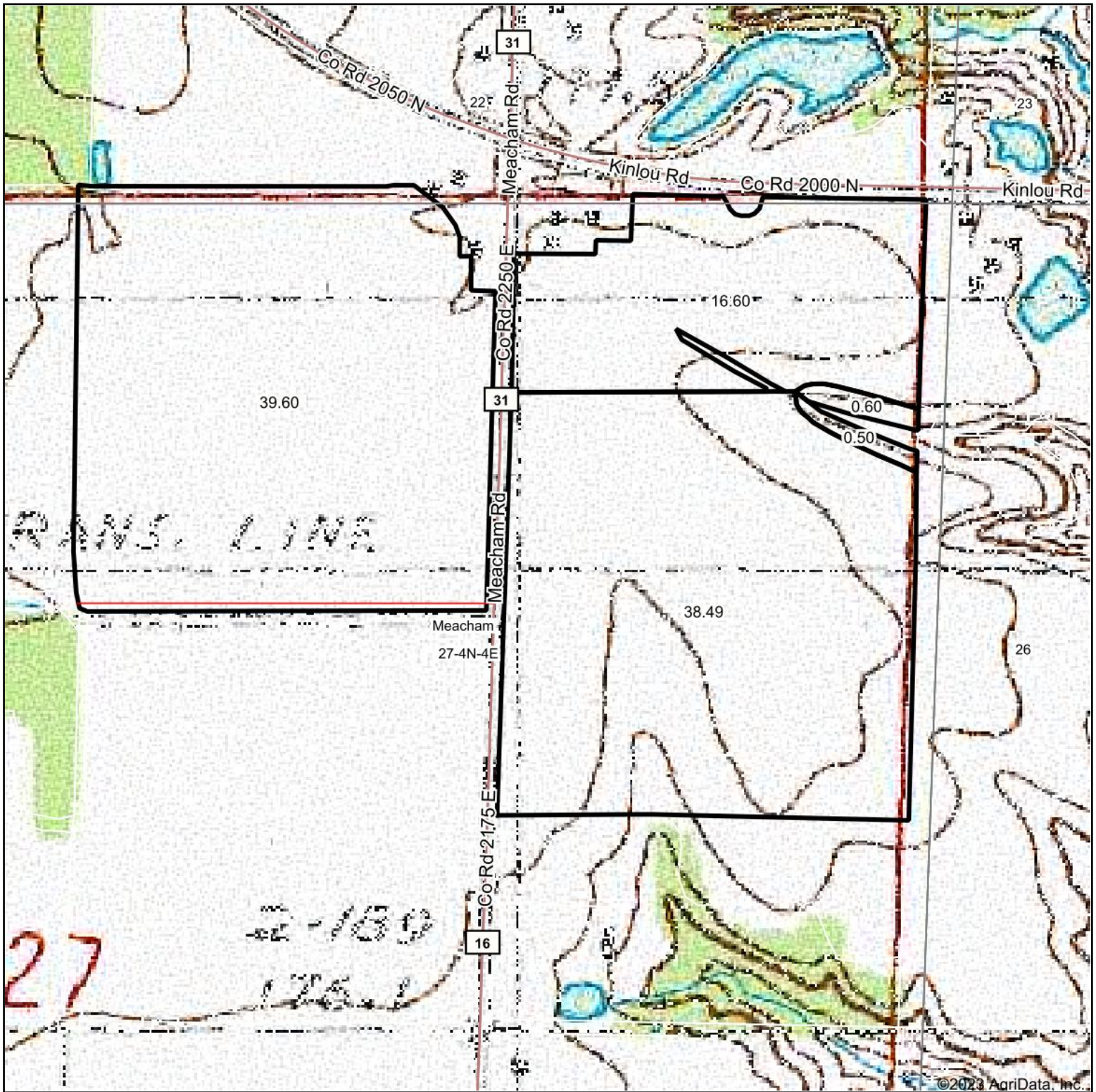
Crop yields and productivity indices for optimum management (B811) are maintained at the following NRES web site: <http://soilproductivity.nres.illinois.edu/>

** Indexes adjusted for slope and erosion according to Bulletin 811 Table S3

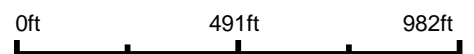
e Soils in the well drained group were not rated for grass-legume and are shown with a zero "0".

Soils data provided by USDA and NRCS. Soils data provided by University of Illinois at Champaign-Urbana.

Topography Map



Map Center: 38° 45' 48.7, -88° 44' 15.61



27-4N-4E
Marion County
Illinois

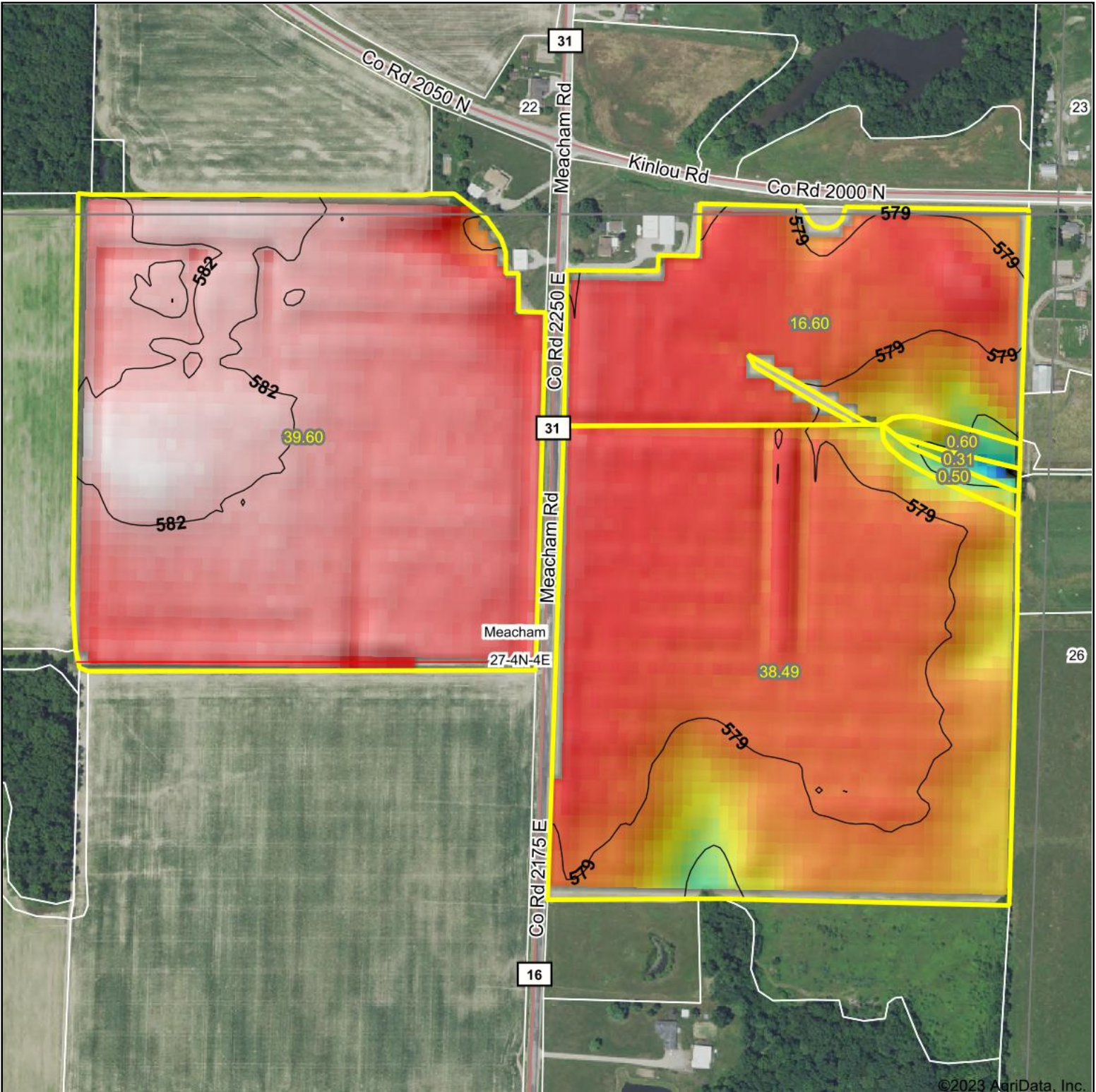


Maps Provided By:

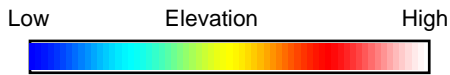


© AgriData, Inc. 2023 www.AgriDataInc.com

Topography Hillshade



©2023 AgriData, Inc.



Source: USGS 10 meter dem
 Interval(ft): 3
 Min: 571.0
 Max: 583.0
 Range: 12.0
 Average: 580.1
 Standard Deviation: 1.51 ft



9/8/2023

27-4N-4E
Marion County
Illinois

Boundary Center: 38° 45' 50.13, -88° 44' 17.67



Maps Provided By:



© AgriData, Inc. 2023 www.AgriDataInc.com

Field borders provided by Farm Service Agency as of 5/21/2008.