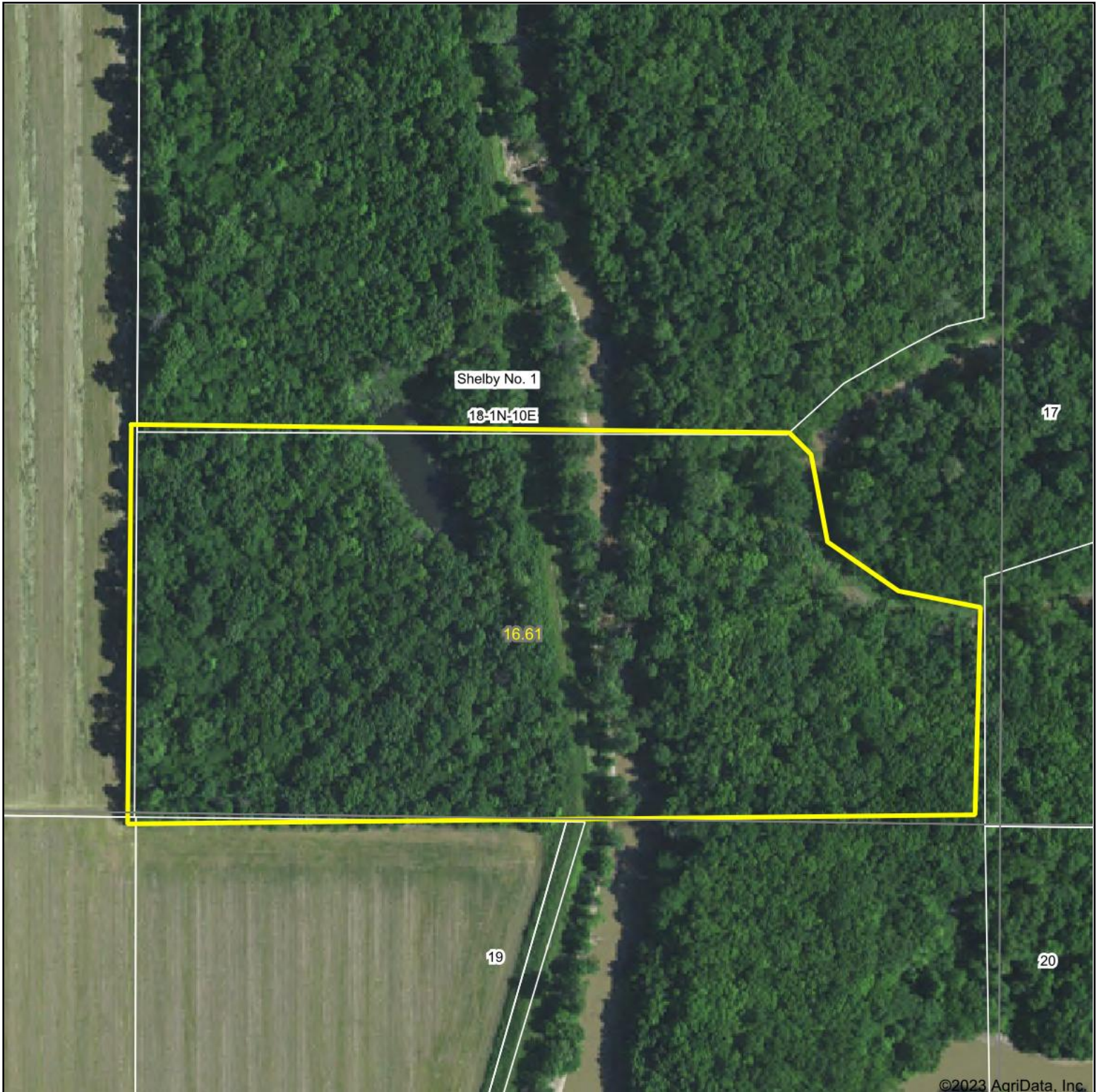
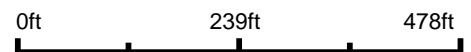


# Aerial Map



©2023 AgriData, Inc.

Boundary Center: 38° 30' 43.95, -88° 7' 59.09



**18-1N-10E**  
**Edwards County**  
**Illinois**



12/27/2023



Maps Provided By:

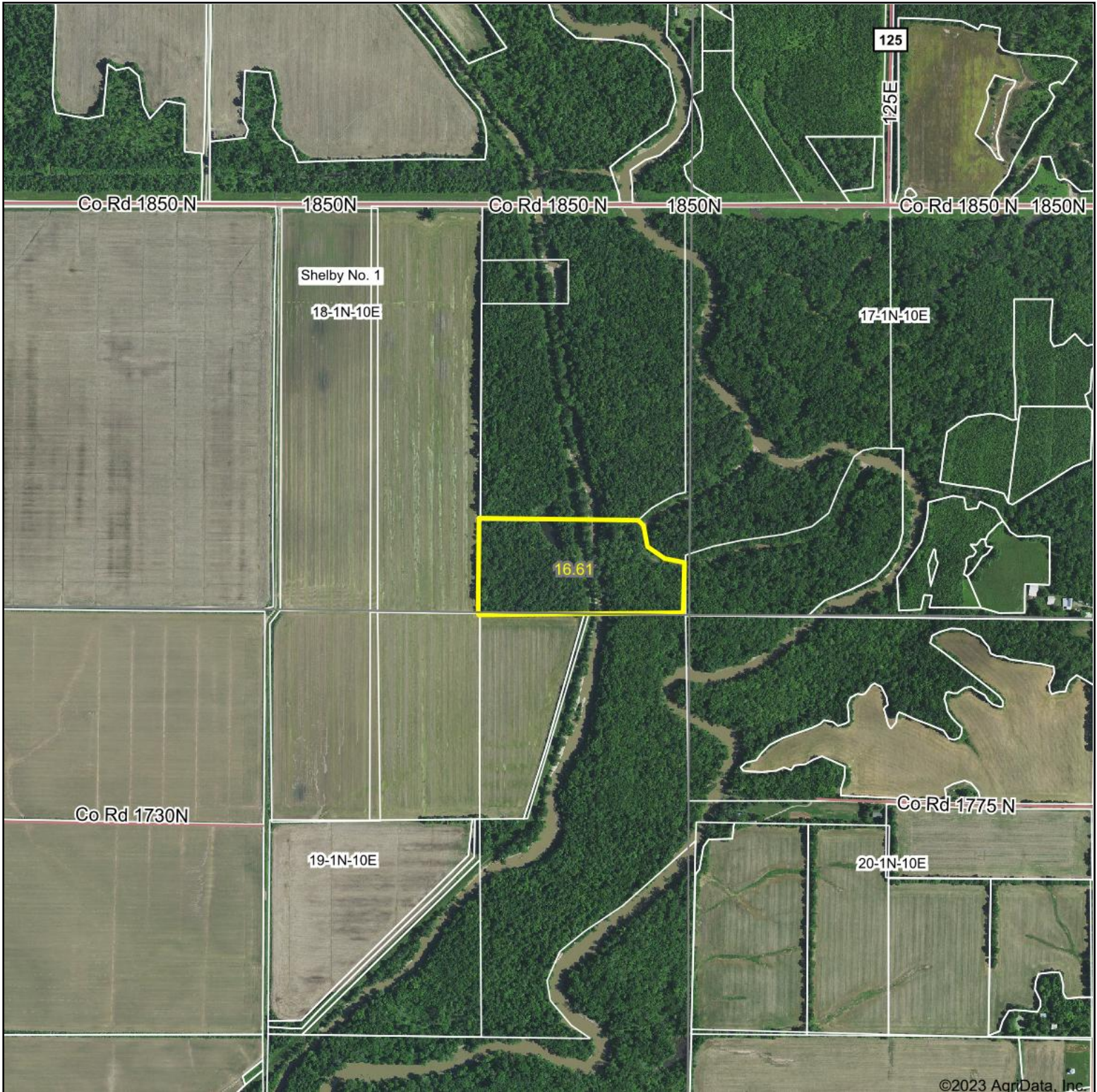


© AgriData, Inc. 2023 www.AgriDataInc.com

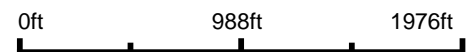
Field borders provided by Farm Service Agency as of 5/21/2008.



# Aerial Map



Boundary Center: 38° 30' 43.95, -88° 7' 59.09



**18-1N-10E**  
**Edwards County**  
**Illinois**



Maps Provided By:

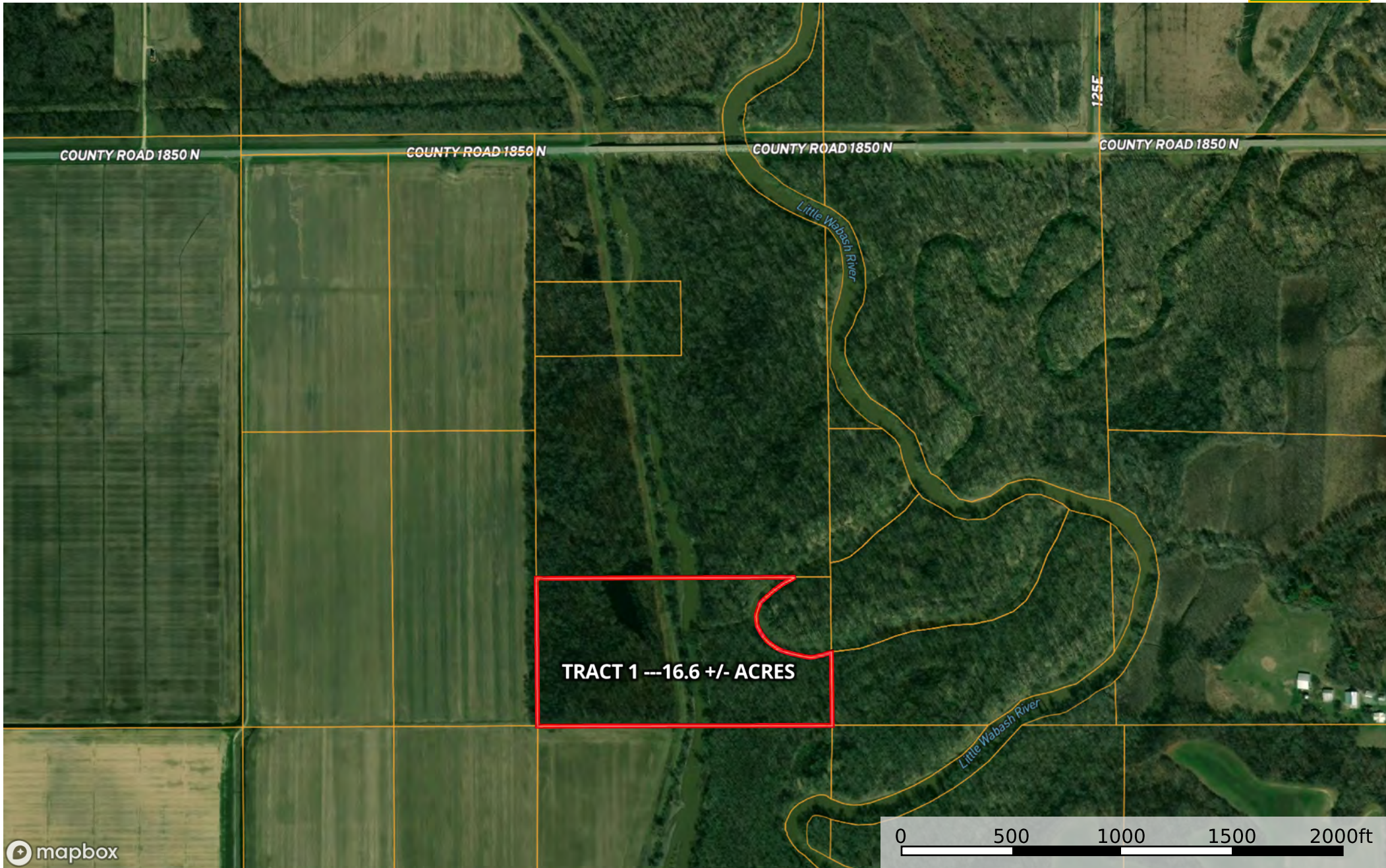


© AgriData, Inc. 2023 www.AgriDataInc.com

12/27/2023

Field borders provided by Farm Service Agency as of 5/21/2008.

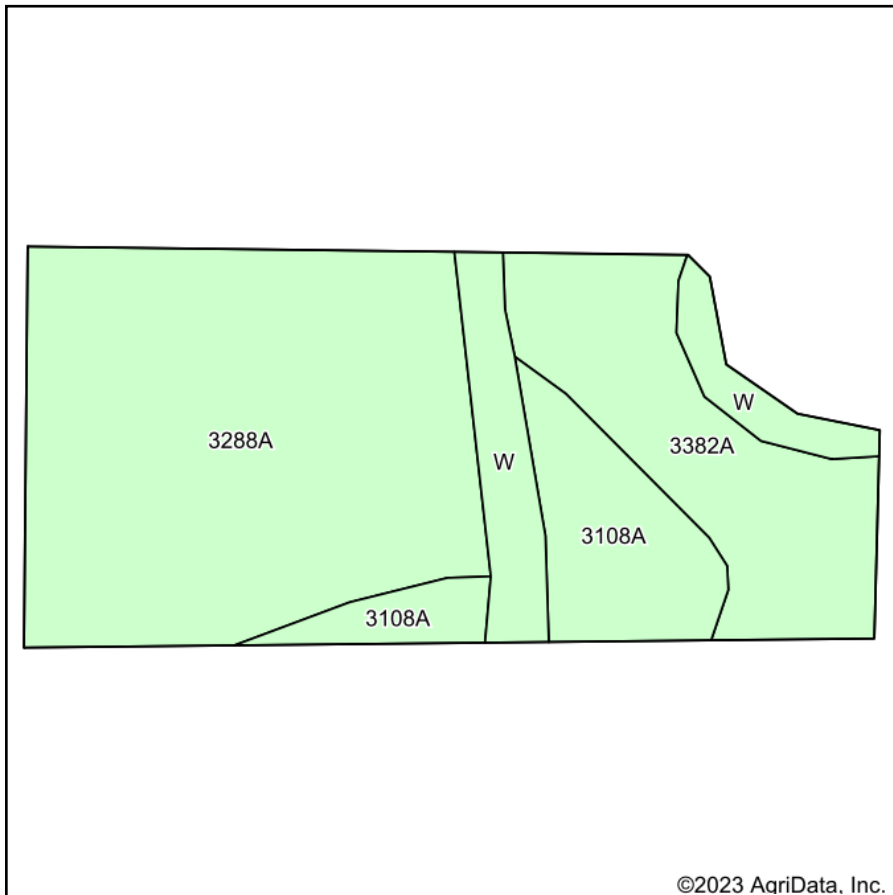




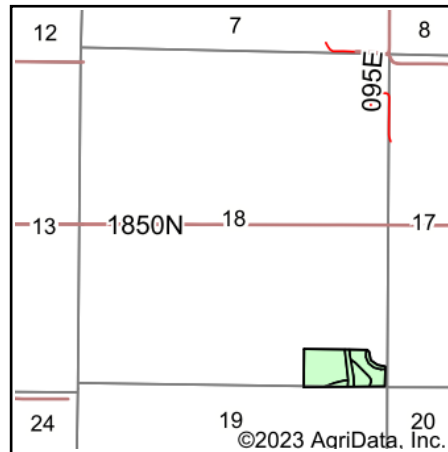
mapbox

Boundary

# Soils Map



Soils data provided by USDA and NRCS.



State: **Illinois**  
 County: **Edwards**  
 Location: **18-1N-10E**  
 Township: **Shelby No. 1**  
 Acres: **16.61**  
 Date: **12/27/2023**



Maps Provided By:



Area Symbol: IL047, Soil Area Version: 15

Code	Soil Description	Acres	Percent of field	Corn Bu/A	Soybeans Bu/A	Wheat Bu/A	Grass-legume e hay, T/A	Crop productivity index for optimum management
**3288A	Petrolia silty clay loam, 0 to 2 percent slopes, frequently flooded	9.01	54.2%	**146	**44	**55	**4.41	**105
**3382A	Belknap silt loam, 0 to 2 percent slopes, frequently flooded	3.52	21.2%	**140	**47	**57	**4.41	**105
**3108A	Bonnie silt loam, 0 to 2 percent slopes, frequently flooded	2.37	14.3%	**134	**44	**53	**4.14	**100
W	Water	1.71	10.3%					
<b>Weighted Average</b>				<b>128</b>	<b>40.1</b>	<b>49.5</b>	<b>3.9</b>	<b>93.5</b>

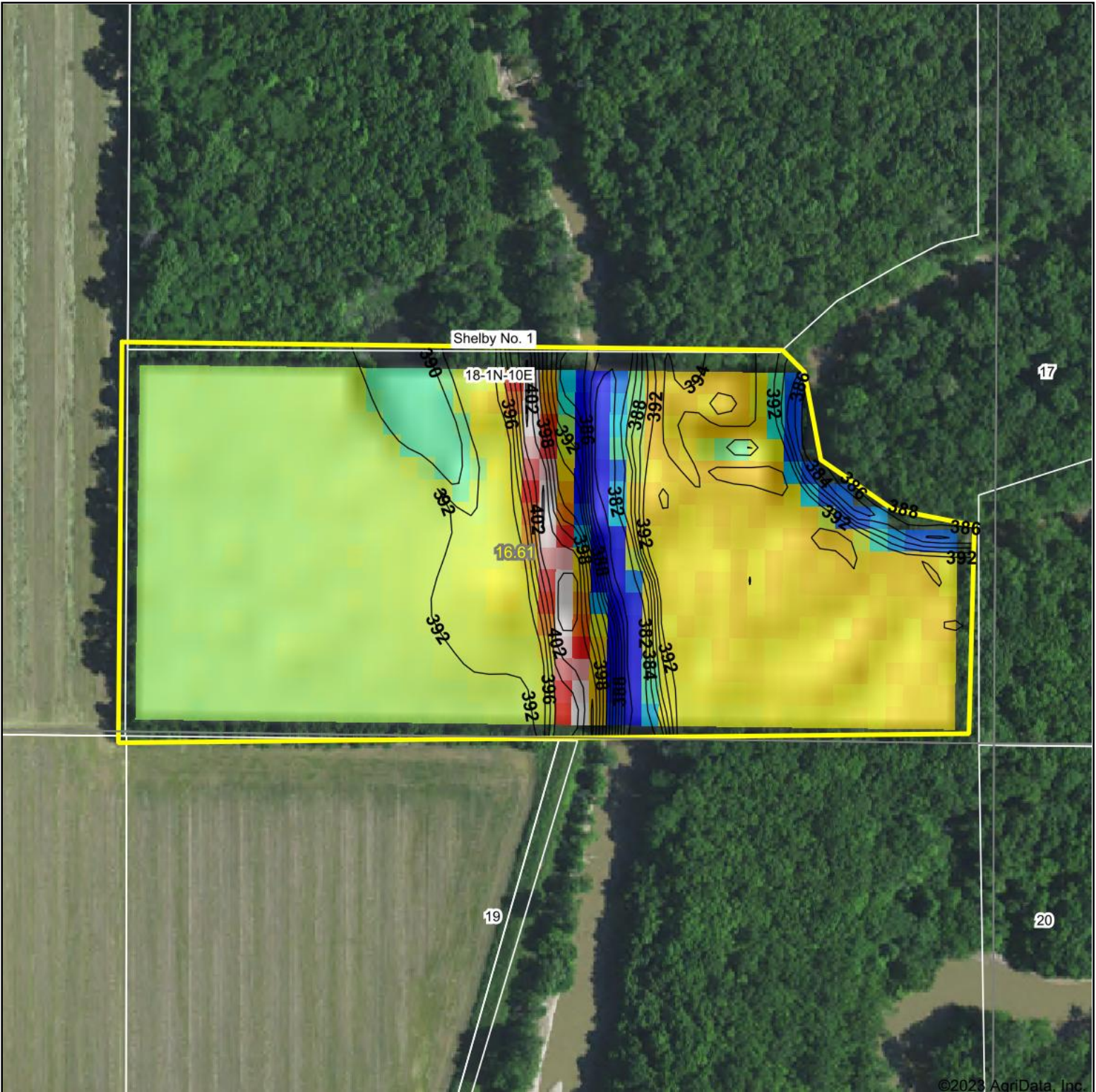
**Table: Optimum Crop Productivity Ratings for Illinois Soil EFOTG are sourced from Bulletin 811 calculated Map Unit Base Yield Indices, and adjusted (Adj) for slope, erosion, flooding, and surface texture.** Publication Date: 02-08-2023

Crop yields and productivity (B811 EFOTG) are maintained at the following USDA web site: 2023 Illinois Soil Productivity and Yield Indices: <https://efotg.sc.egov.usda.gov/#/state/IL/documents/section=2&folder=52809>

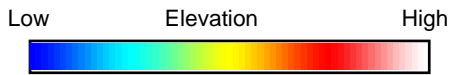
e Soils in the well drained group were not rated for grass-legume and are shown with a zero "0".  
 Soils data provided by USDA and NRCS. Soils data provided by University of Illinois at Champaign-Urbana.



# Topography Hillshade



©2023 AgriData, Inc.



Source: USGS 10 meter dem  
 Interval(ft): 2  
 Min: 381.6  
 Max: 404.6  
 Range: 23.0  
 Average: 391.9  
 Standard Deviation: 3.61 ft



12/27/2023

**18-1N-10E**  
**Edwards County**  
**Illinois**

Boundary Center: 38° 30' 43.95, -88° 7' 59.09



Maps Provided By:



© AgriData, Inc. 2023 www.AgriDataInc.com

Field borders provided by Farm Service Agency as of 5/21/2008.



# Topography Map



©2023 AgriData, Inc.

Map Center: 38° 30' 45.19, -88° 7' 59.23



**18-1N-10E**  
**Edwards County**  
**Illinois**



12/27/2023

Maps Provided By:

**surety**  
CUSTOMIZED ONLINE MAPPING

© AgriData, Inc. 2023      www.AgriDataInc.com