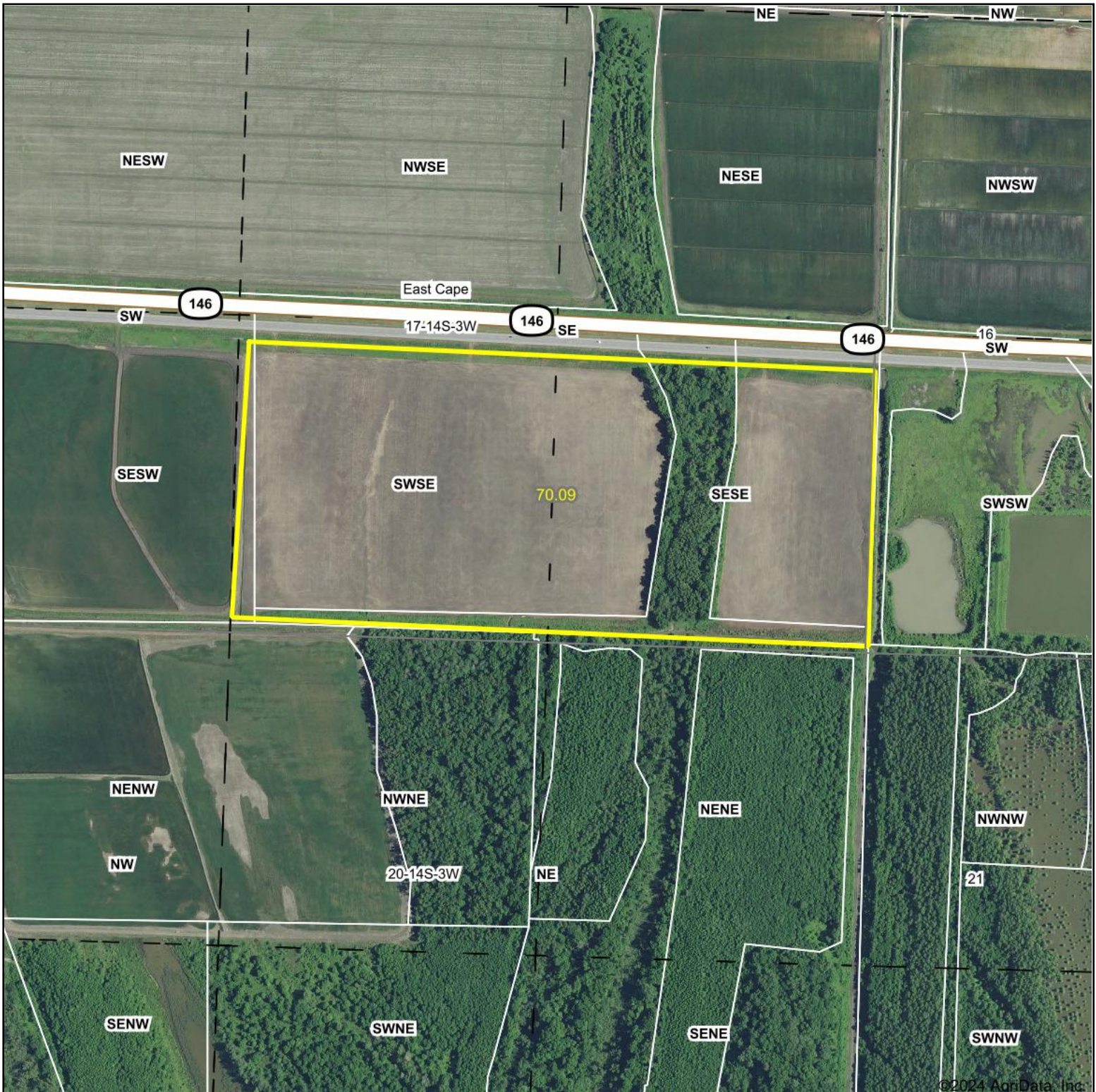


Aerial Map



©2024 AgriData, Inc.

Boundary Center: 37° 17' 37.6, -89° 27' 27.24



17-14S-3W
Alexander County
Illinois



Maps Provided By:

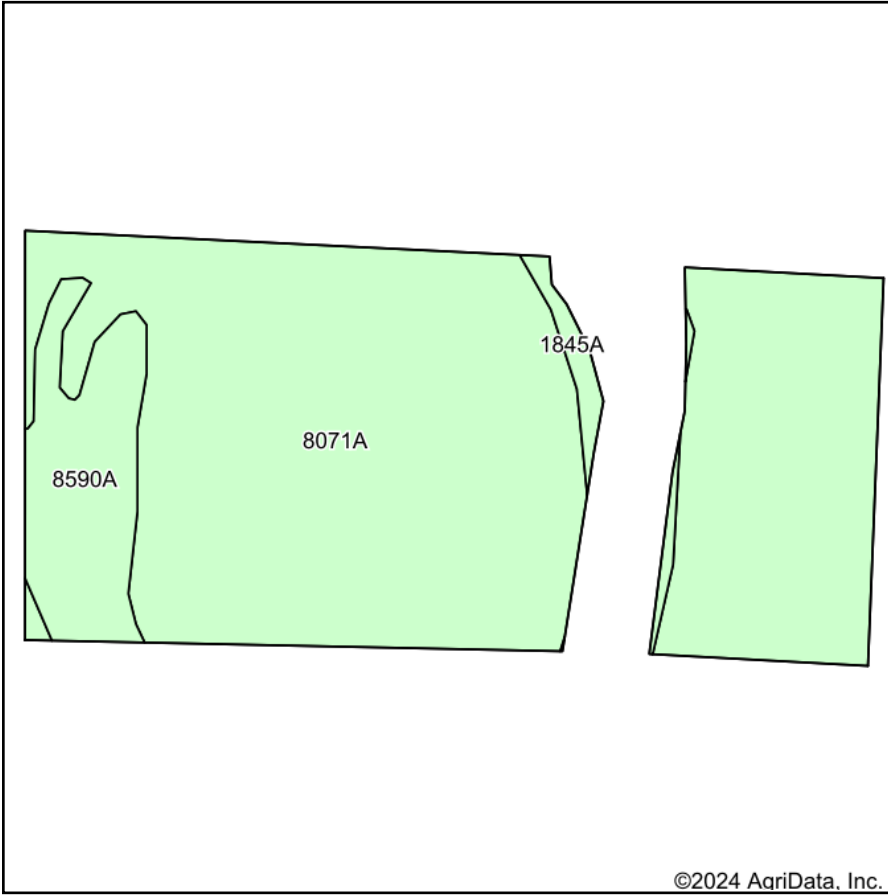


© AgriData, Inc. 2023 www.AgriDataInc.com

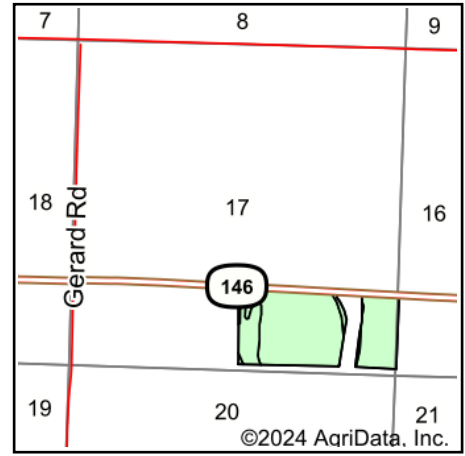
1/6/2024

Field borders provided by Farm Service Agency as of 5/21/2008.

Soils Map



Soils data provided by USDA and NRCS.



State: **Illinois**
 County: **Alexander**
 Location: **17-14S-3W**
 Township: **East Cape**
 Acres: **64.43**
 Date: **1/6/2024**



Maps Provided By:



Area Symbol: IL003, Soil Area Version: 20

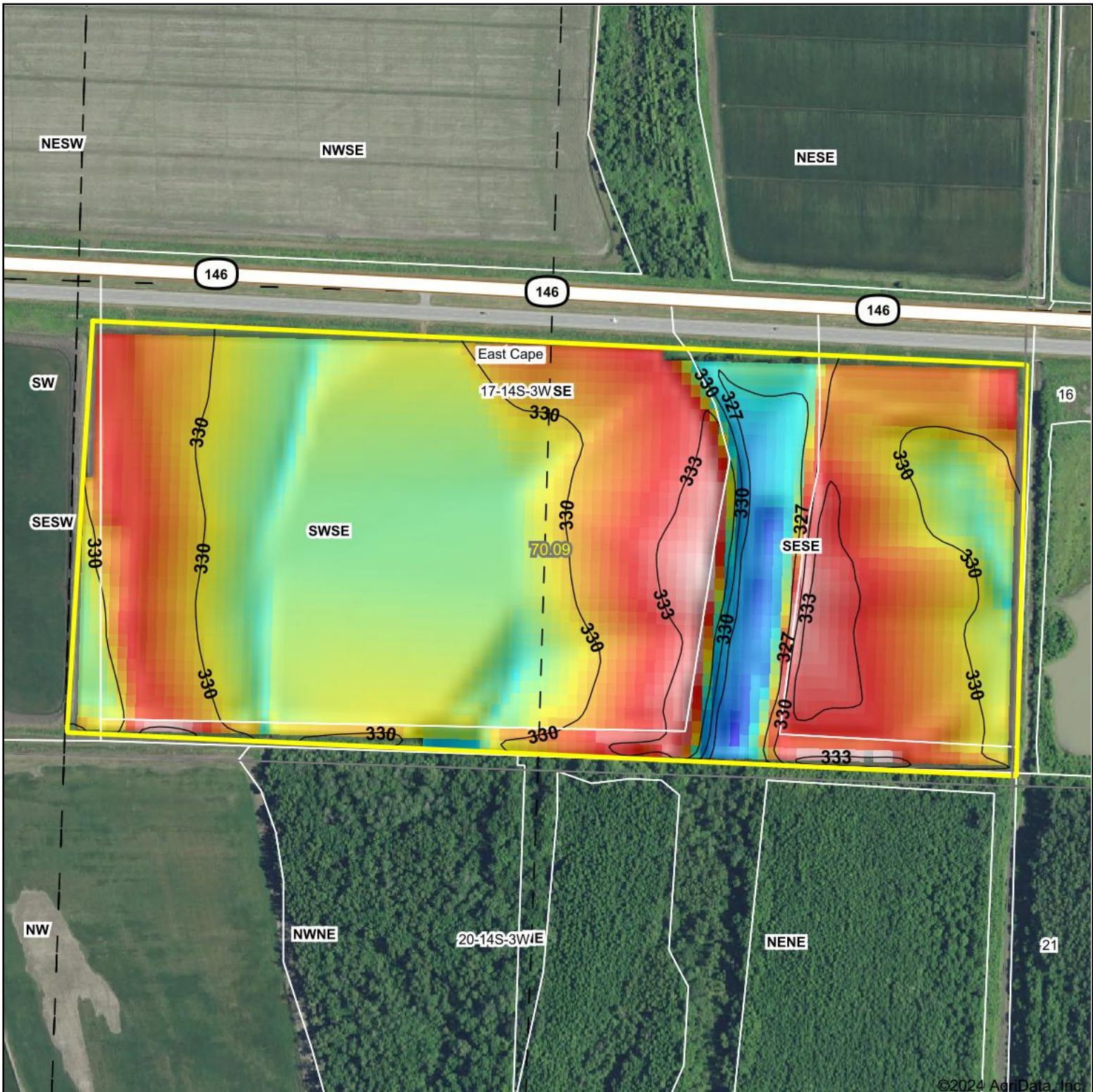
Code	Soil Description	Acres	Percent of field	Corn Bu/A	Soybeans Bu/A	Wheat Bu/A	Crop productivity index for optimum management
**8071A	Darwin silty clay, 0 to 2 percent slopes, occasionally flooded	55.95	86.8%	**148	**50	**60	**110
**8590A	Cairo silty clay, 0 to 2 percent slopes, occasionally flooded	7.13	11.1%	**158	**53	**61	**118
**1845A	Darwin and Jacob silty clays, undrained, 0 to 2 percent slopes, frequently flooded	1.35	2.1%	**63	**22	**26	**48
Weighted Average				147.3	49.7	59.4	109.6

Table: Optimum Crop Productivity Ratings for Illinois Soil EFOTG are sourced from Bulletin 811 calculated Map Unit Base Yield Indices, and adjusted (Adj) for slope, erosion, flooding, and surface texture. Publication Date: 02-08-2023

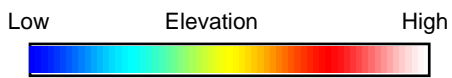
Crop yields and productivity (B811 EFOTG) are maintained at the following USDA web site: 2023 Illinois Soil Productivity and Yield Indices: <https://efotg.sc.egov.usda.gov/#/state/IL/documents/section=2&folder=52809>

Soils data provided by USDA and NRCS. Soils data provided by University of Illinois at Champaign-Urbana.

Topography Hillshade



©2024 AgriData, Inc.



Source: USGS 10 meter dem
 Interval(ft): 3
 Min: 323.9
 Max: 337.5
 Range: 13.6
 Average: 330.0
 Standard Deviation: 2 ft



17-14S-3W
Alexander County
Illinois

Boundary Center: 37° 17' 37.6, -89° 27' 27.24



Maps Provided By:



© AgriData, Inc. 2023 www.AgriDataInc.com

Field borders provided by Farm Service Agency as of 5/21/2008.