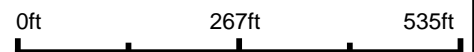


Aerial Map



©2023 AgriData, Inc.

Boundary Center: 38° 37' 57.64, -89° 3' 8.1



11-2N-1E
Marion County
Illinois



Maps Provided By:



© AgriData, Inc. 2023 www.AgriDataInc.com

12/19/2023

Field borders provided by Farm Service Agency as of 5/21/2008.

Topography Contours



©2023 AgriData, Inc.

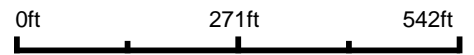


Maps Provided By:



© AgriData, Inc. 2023 www.AgriDataInc.com

Source: USGS 10 meter dem
 Interval(ft): 2.0
 Min: 528.5
 Max: 533.8
 Range: 5.3
 Average: 530.5
 Standard Deviation: 0.89 ft



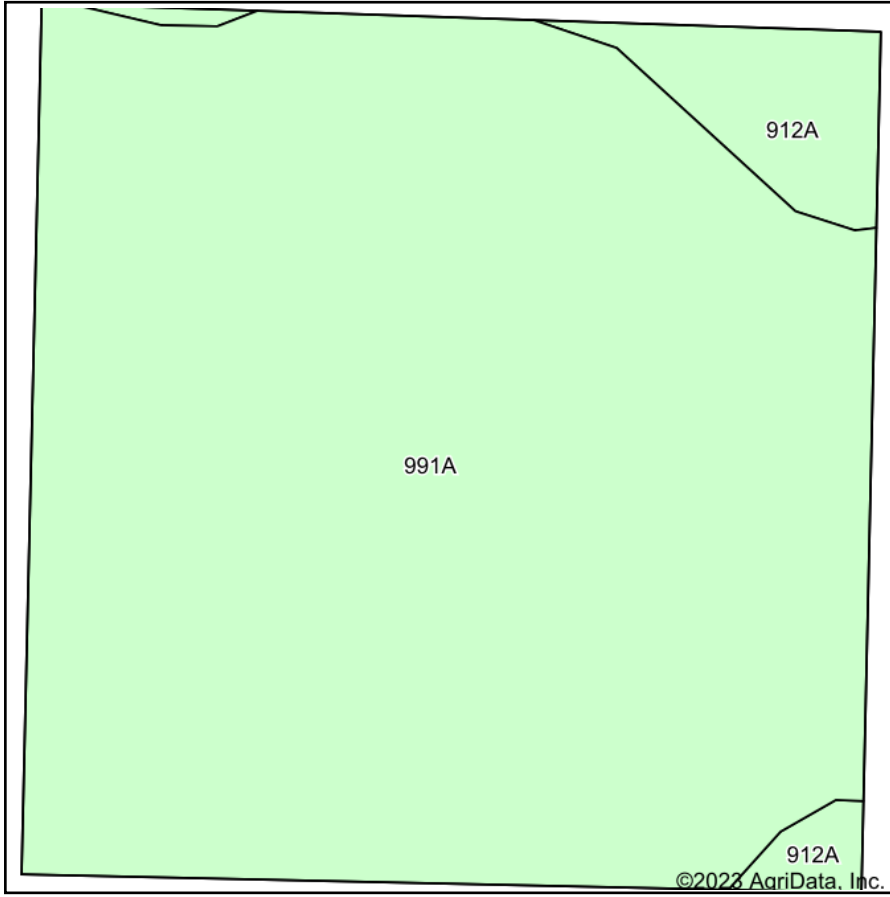
12/19/2023

11-2N-1E
Marion County
Illinois

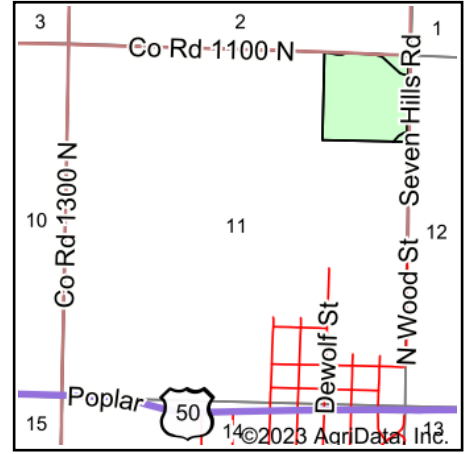
Boundary Center: 38° 37' 57.64, -89° 3' 8.1

Field borders provided by Farm Service Agency as of 5/21/2008.

Soils Map



Soils data provided by USDA and NRCS.



State: **Illinois**
 County: **Marion**
 Location: **12-2N-1E**
 Township: **Odin**
 Acres: **39.96**
 Date: **12/19/2023**



Maps Provided By:



© AgriData, Inc. 2023

www.AgriDataInc.com



Area Symbol: IL121, Soil Area Version: 20

Code	Soil Description	Acres	Percent of field	Corn Bu/A	Soybeans Bu/A	Wheat Bu/A	Grass-legume e hay, T/A	Crop productivity index for optimum management
991A	Cisne-Huey silt loams, 0 to 2 percent slopes	37.44	93.7%	131	45	52	4.11	100
912A	Hoyleton-Darmstadt silt loams, 0 to 2 percent slopes	2.52	6.3%	135	45	52	4.20	102
Weighted Average				131.3	45	52	4.1	100.1

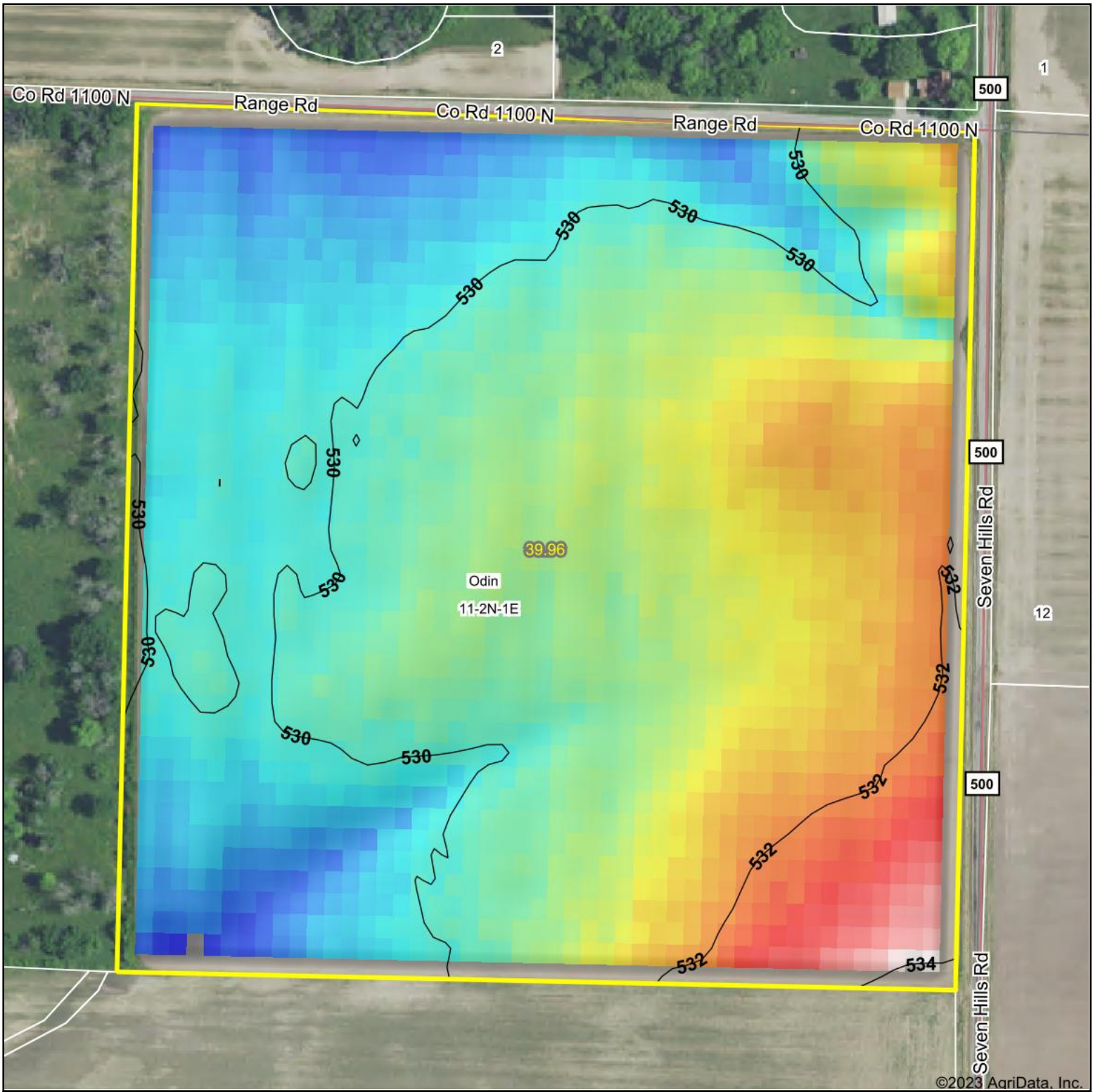
Table: Optimum Crop Productivity Ratings for Illinois Soil EFOTG are sourced from Bulletin 811 calculated Map Unit Base Yield Indices, and adjusted (Adj) for slope, erosion, flooding, and surface texture. Publication Date: 02-08-2023

Crop yields and productivity (B811 EFOTG) are maintained at the following USDA web site: 2023 Illinois Soil Productivity and Yield Indices: <https://efotg.sc.egov.usda.gov/#/state/IL/documents/section=2&folder=52809>

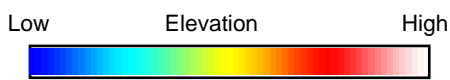
e Soils in the well drained group were not rated for grass-legume and are shown with a zero "0".

Soils data provided by USDA and NRCS. Soils data provided by University of Illinois at Champaign-Urbana.

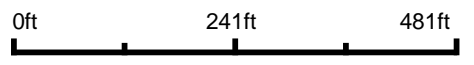
Topography Hillshade



©2023 AgriData, Inc.



Source: USGS 10 meter dem
 Interval(ft): 2
 Min: 528.5
 Max: 533.8
 Range: 5.3
 Average: 530.5
 Standard Deviation: 0.89 ft



11-2N-1E
Marion County
Illinois

Boundary Center: 38° 37' 57.64, -89° 3' 8.1



Maps Provided By:



© AgriData, Inc. 2023 www.AgriDataInc.com

Field borders provided by Farm Service Agency as of 5/21/2008.