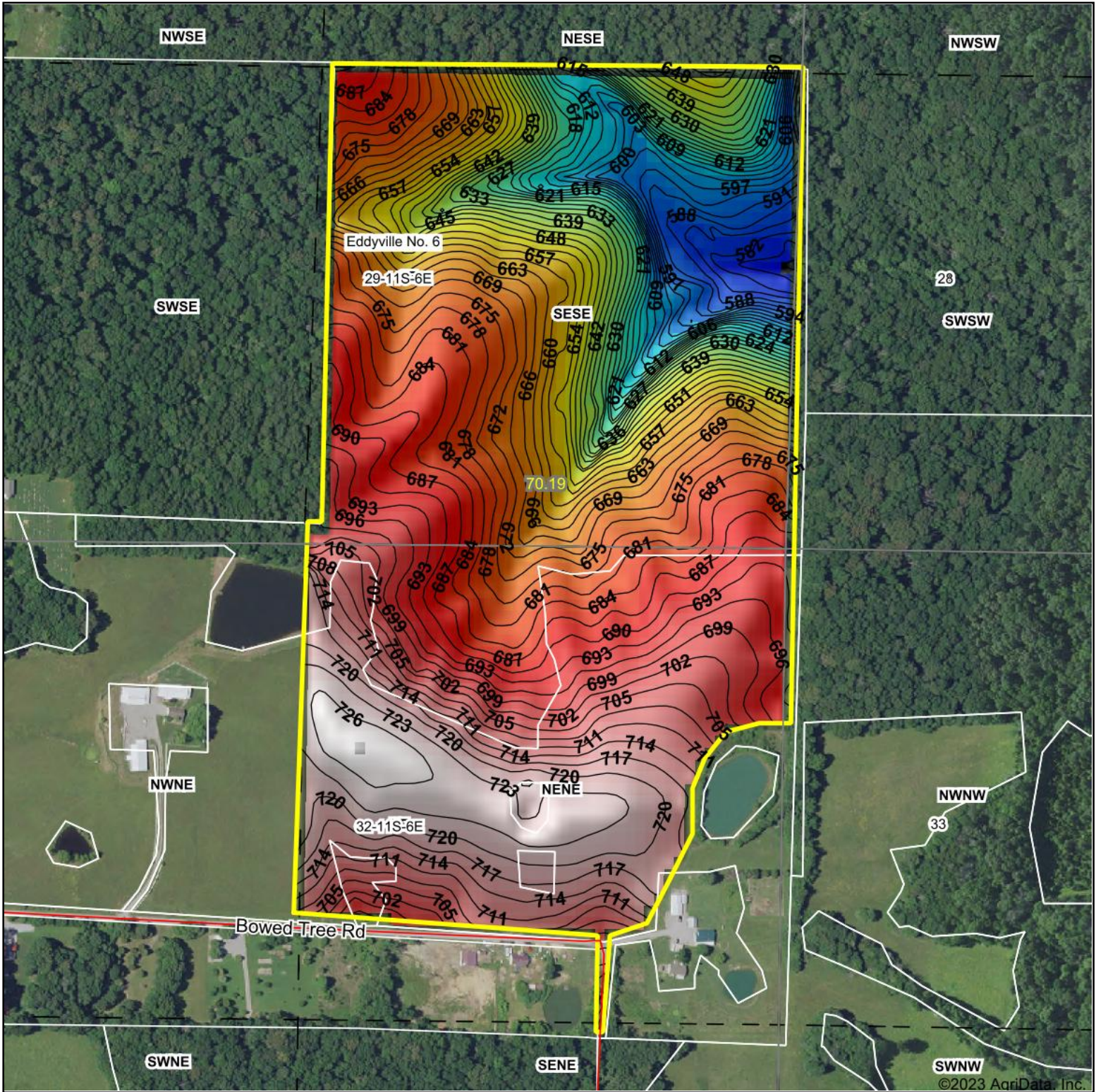
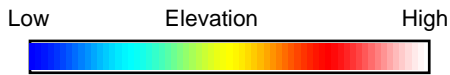


Topography Hillshade



©2023 AgriData, Inc.



Source: USGS 10 meter dem



Interval(ft): 3

Min: 573.6

Max: 727.6

Range: 154.0

Average: 674.2

Standard Deviation: 38.06 ft



11/16/2023

32-11S-6E
Pope County
Illinois

Boundary Center: 37° 31' 34.95, -88° 33' 49.69



Maps Provided By:



© AgriData, Inc. 2023 www.AgriDataInc.com

Field borders provided by Farm Service Agency as of 5/21/2008.