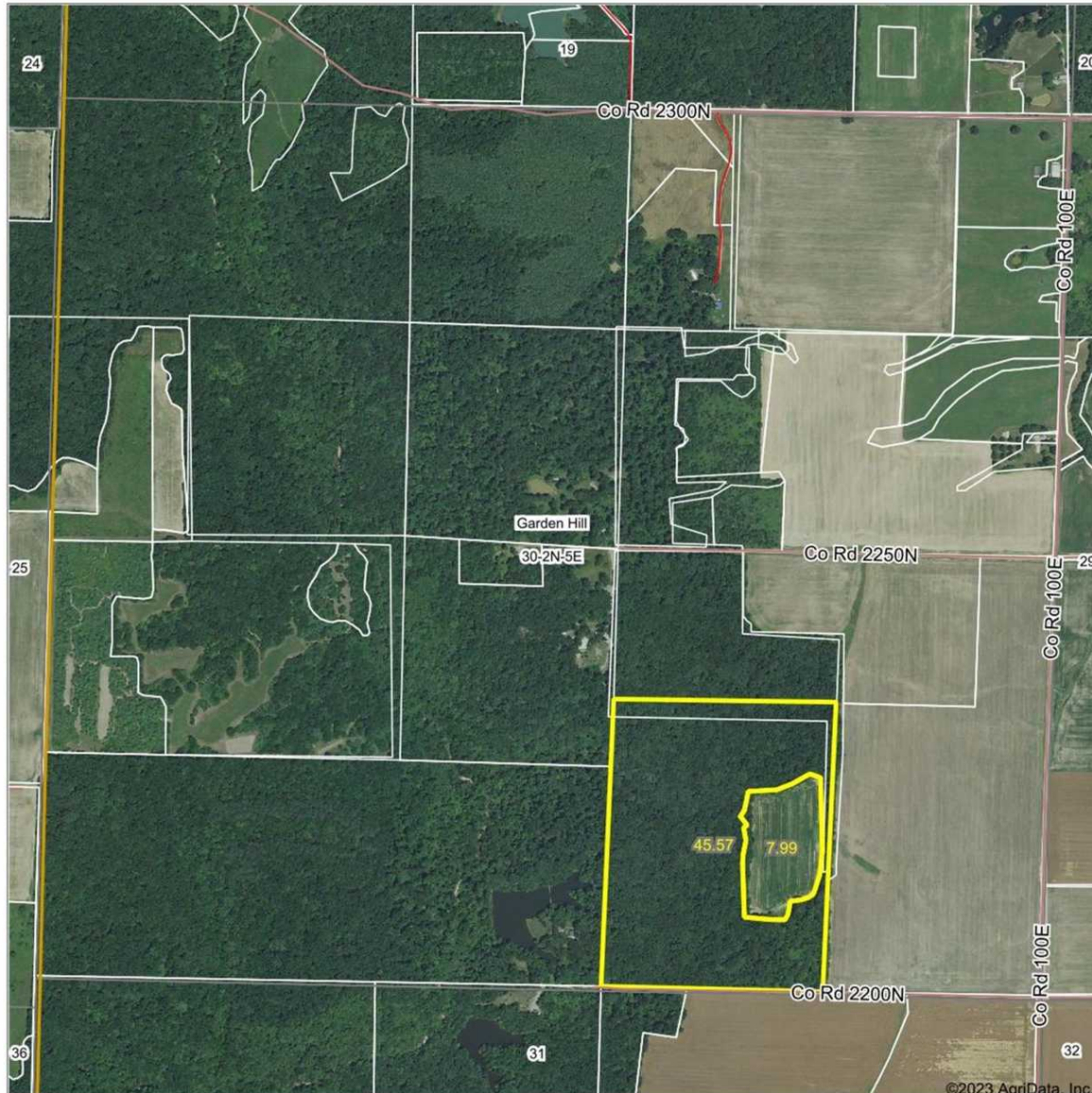


### Aerial Photograph

### Aerial Map



Map Center: 38.584428, -88.687942

0ft 942ft 1884ft

**30-2N-5E**  
Wayne County  
Illinois

5/1/2023

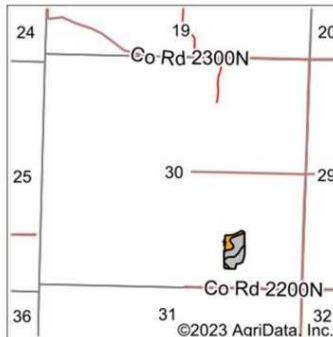
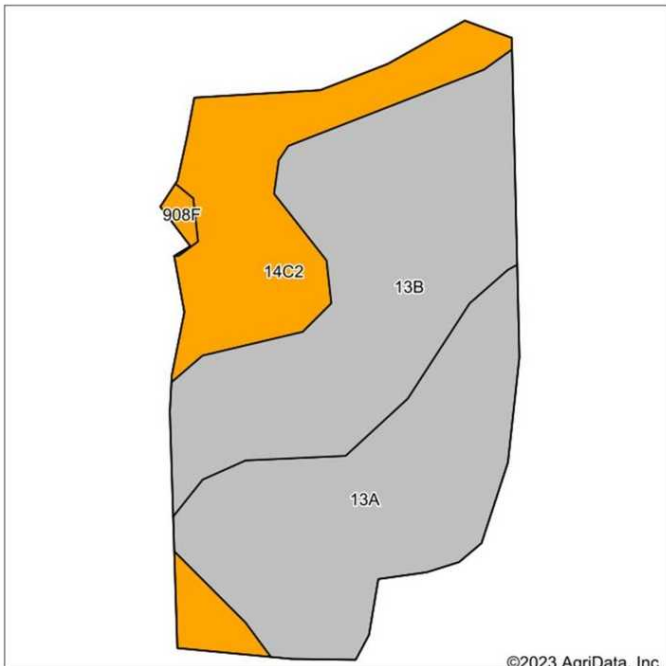
Brett Berger, ARA

Maps Provided By: **surety**  
CUSTOMIZED ONLINE MAPPING  
© AgriData, Inc. 2023 www.AgridataInc.com

Field borders provided by Farm Service Agency as of 5/21/2008.

### Cropland Soils Map

#### Soils Map



State: **Illinois**  
 County: **Wayne**  
 Location: **30-2N-5E**  
 Township: **Garden Hill**  
 Acres: **7.99**  
 Date: **5/1/2023**

 Brett Berger, ARA

Maps Provided By:  
  
 CUSTOMIZED ONLINE MAPPING  
 © AgriData, Inc. 2023 www.AgriDataInc.com



Soils data provided by USDA and NRCS.

©2023 AgriData, Inc.

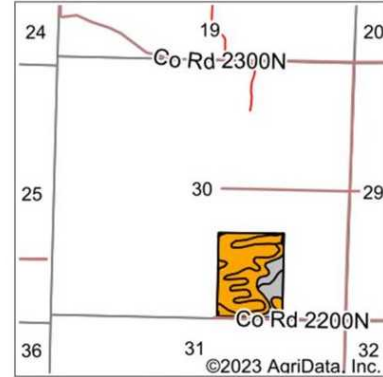
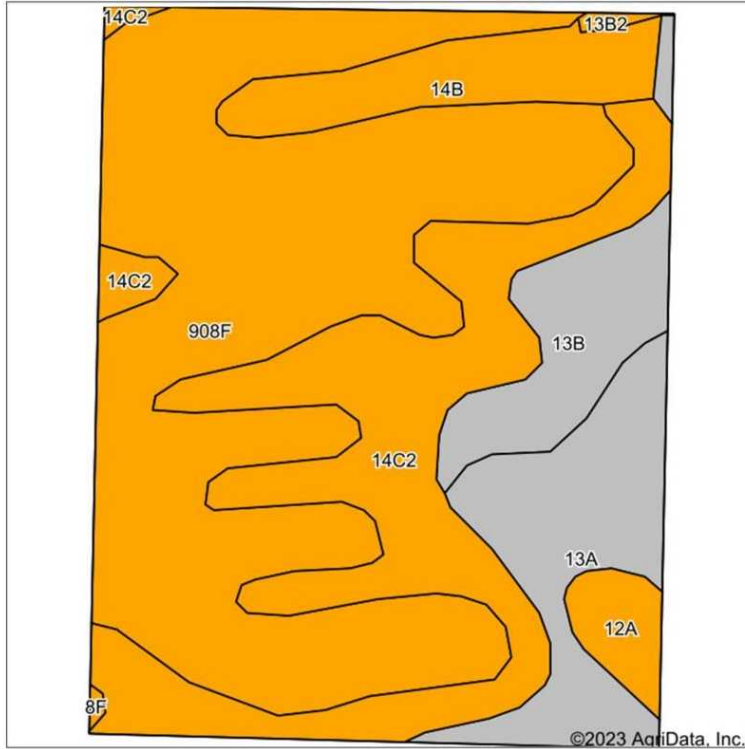
Area Symbol: IL191, Soil Area Version: 20

Code	Soil Description	Acres	Percent of field	Il. State Productivity Index Legend	Corn Bu/A	Soybeans Bu/A	Wheat Bu/A	Crop productivity index for optimum management
**13B	Bluford silt loam, 2 to 5 percent slopes	3.29	41.2%		**135	**44	**54	**100
13A	Bluford silt loam, 0 to 2 percent slopes	2.71	33.9%		136	44	55	101
**14C2	Ava silt loam, 5 to 10 percent slopes, eroded	1.93	24.2%		**122	**40	**50	**90
**908F	Hickory-Kell silt loams, 18 to 35 percent slopes	0.06	0.8%		**87	**29	**34	**67
<b>Weighted Average</b>					<b>131.8</b>	<b>42.9</b>	<b>53.2</b>	<b>97.7</b>

**Table: Optimum Crop Productivity Ratings for Illinois Soil by K.R. Olson and J.M. Lang, Office of Research, ACES, University of Illinois at Champaign-Urbana.** Version: 1/2/2012 Amended Table S2 B811  
 Crop yields and productivity indices for optimum management (B811) are maintained at the following NRES web site: <http://soilproductivity.nres.illinois.edu/>  
 \*\* Indexes adjusted for slope and erosion according to Bulletin 811 Table S3  
 Soils data provided by USDA and NRCS. Soils data provided by University of Illinois at Champaign-Urbana.

Overall Soils Map

Soils Map



State: **Illinois**  
 County: **Wayne**  
 Location: **30-2N-5E**  
 Township: **Garden Hill**  
 Acres: **53.33**  
 Date: **5/1/2023**



Soils data provided by USDA and NRCS.

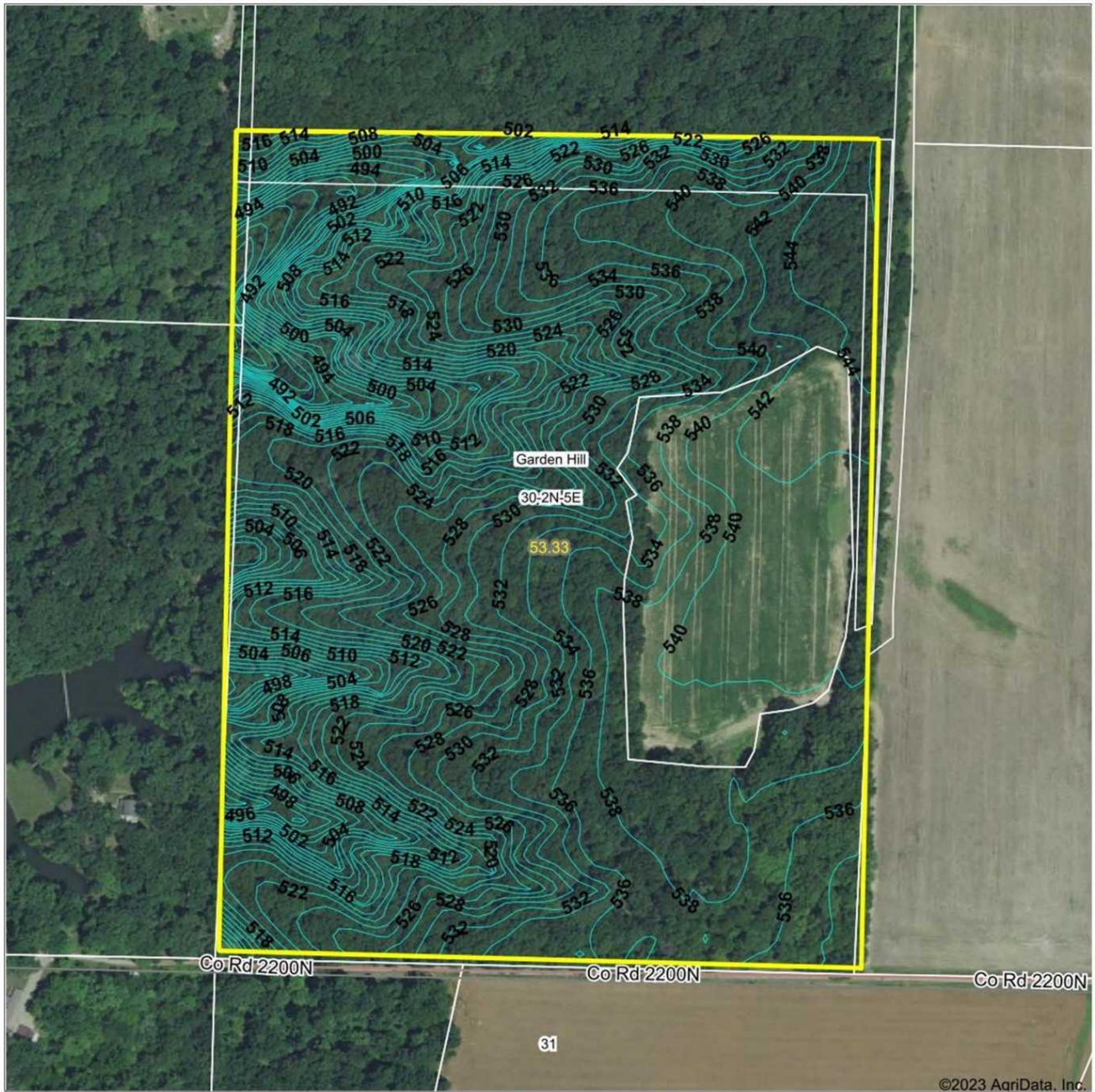
Area Symbol: IL191, Soil Area Version: 20

Code	Soil Description	Acres	Percent of field	Il. State Productivity Index Legend	Corn Bu/A	Soybeans Bu/A	Wheat Bu/A	Crop productivity index for optimum management
**908F	Hickory-Kell silt loams, 18 to 35 percent slopes	25.66	48.1%		**87	**29	**34	**67
**14C2	Ava silt loam, 5 to 10 percent slopes, eroded	12.93	24.2%		**122	**40	**50	**90
13A	Bluford silt loam, 0 to 2 percent slopes	5.82	10.9%		136	44	55	101
**13B	Bluford silt loam, 2 to 5 percent slopes	3.93	7.4%		**135	**44	**54	**100
**14B	Ava silt loam, 2 to 5 percent slopes	3.58	6.7%		**134	**44	**54	**99
12A	Wynoose silt loam, 0 to 2 percent slopes	1.22	2.3%		128	42	51	97
**13B2	Bluford silt loam, 2 to 5 percent slopes, eroded	0.13	0.2%		**129	**42	**52	**96
**8F	Hickory silt loam, 18 to 35 percent slopes	0.06	0.1%		**86	**29	**35	**65
<b>Weighted Average</b>					<b>108.6</b>	<b>35.7</b>	<b>43.4</b>	<b>81.6</b>

**Table: Optimum Crop Productivity Ratings for Illinois Soil by K.R. Olson and J.M. Lang, Office of Research, ACES, University of Illinois at Champaign-Urbana.** Version: 1/2/2012 Amended Table S2 B811  
 Crop yields and productivity indices for optimum management (B811) are maintained at the following NRES web site: <http://soilproductivity.nres.illinois.edu/>  
 \*\* Indexes adjusted for slope and erosion according to Bulletin 811 Table S3  
 Soils data provided by USDA and NRCS. Soils data provided by University of Illinois at Champaign-Urbana.

Topography Map

Topography Contours



©2023 AgriData, Inc.



Brett Berger, ARA

Maps Provided By:



CUSTOMIZED ONLINE MAPPING  
© AgriData, Inc. 2023 www.AgriDataInc.com

Field borders provided by Farm Service Agency as of 5/21/2008.

Source: USGS 10 meter dem

Interval(ft): 2.0

Min: 480.7

Max: 545.8

Range: 65.1

Average: 527.2

Standard Deviation: 13.98 ft

0ft 325ft 651ft



5/1/2023

**30-2N-5E**  
**Wayne County**  
**Illinois**

Map Center: 38.584428, -88.687942