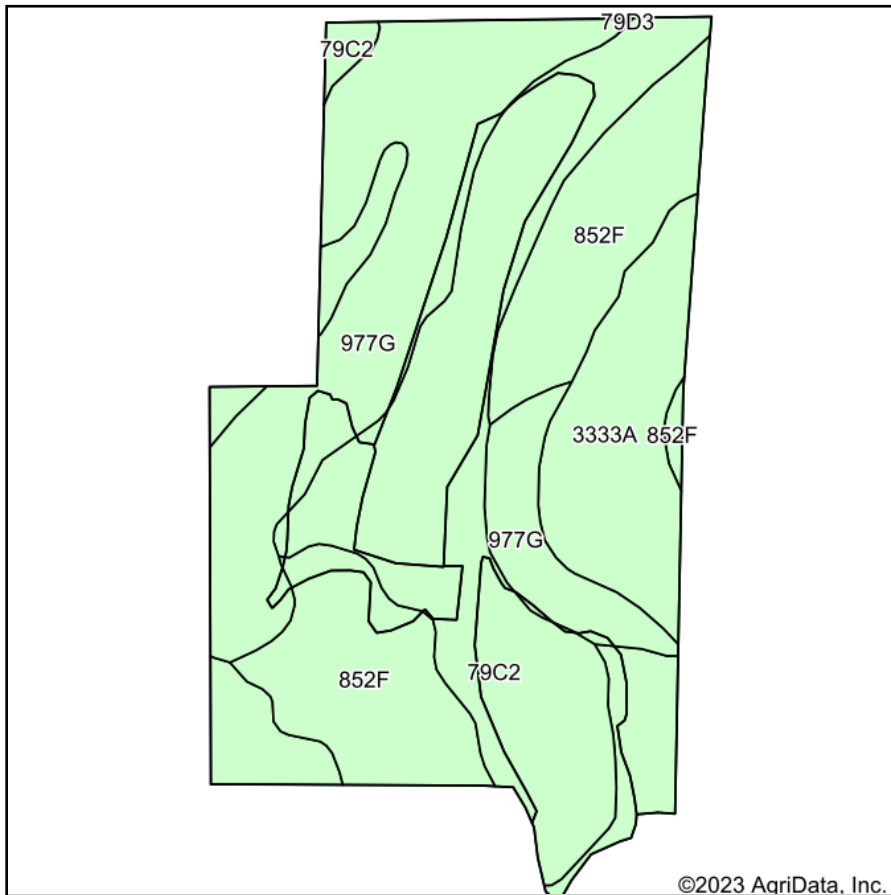
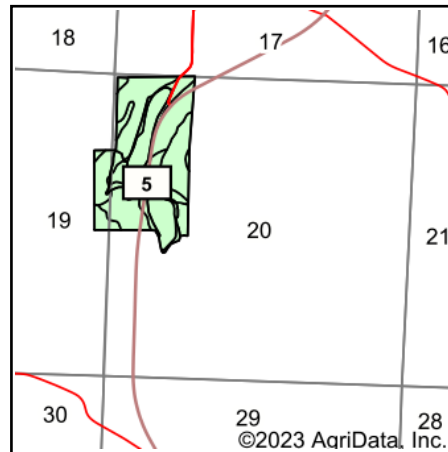


Soils Map



Soils data provided by USDA and NRCS.



State: **Illinois**
 County: **Randolph**
 Location: **20-7S-5W**
 Township: **Wine Hill**
 Acres: **96.48**
 Date: **10/4/2023**



Maps Provided By:



© AgriData, Inc. 2023

www.AgriDataInc.com



Area Symbol: IL157, Soil Area Version: 16

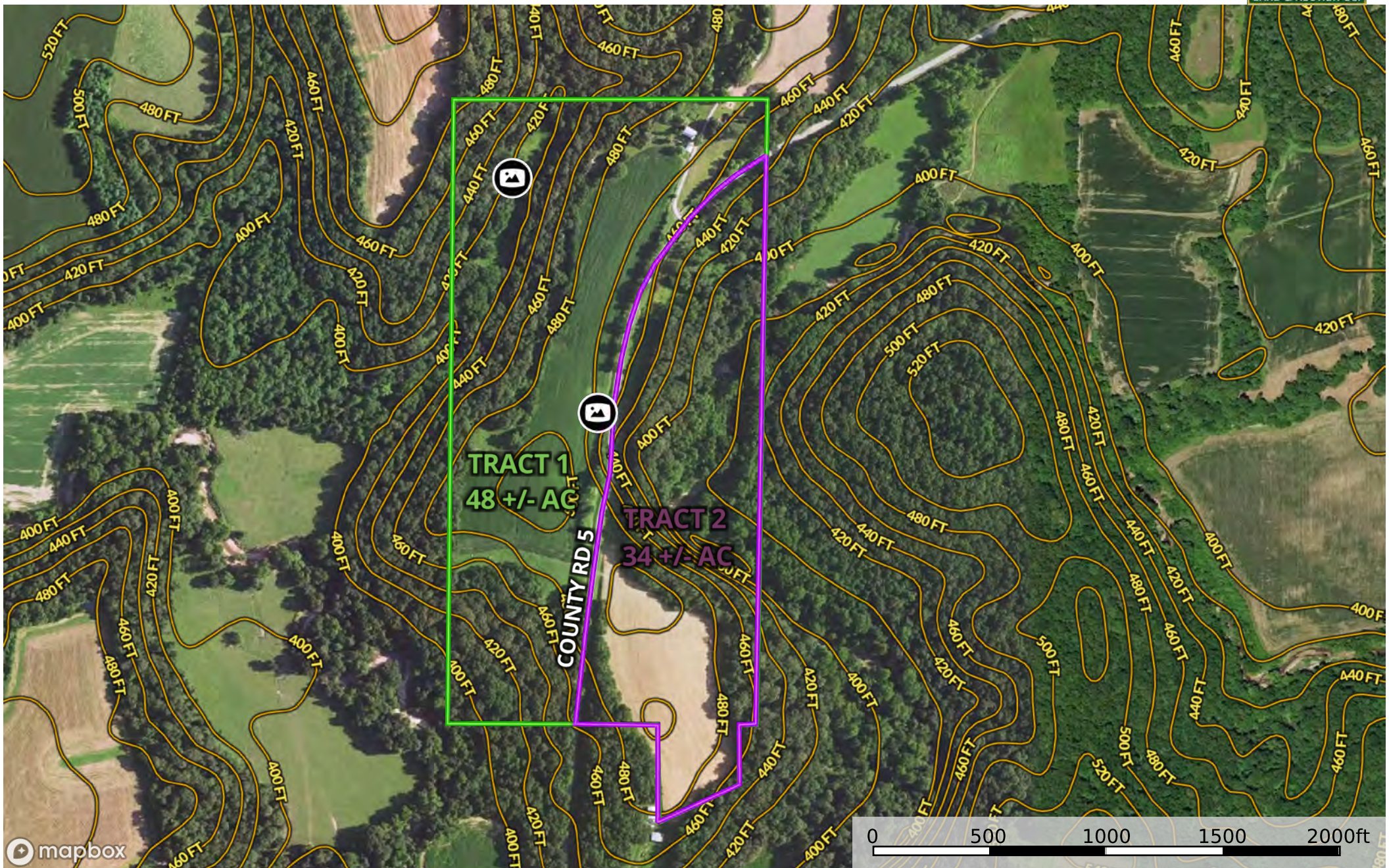
Code	Soil Description	Acres	Percent of field	Corn Bu/A	Soybeans Bu/A	Wheat Bu/A	Crop productivity index for optimum management
**79C2	Menfro silt loam, 5 to 10 percent slopes, eroded	29.27	30.3%	**153	**47	**59	**112
**977G	Neotoma-Wellston complex, 35 to 60 percent slopes	26.88	27.9%	**49	**17	**19	**37
**852F	Menfro-Wellston silt loam, 18 to 35 percent slopes	23.93	24.8%	**104	**33	**40	**76
3333A	Wakeland silt loam, 0 to 2 percent slopes, frequently flooded	16.40	17.0%	174	56	68	128
Weighted Average				115.4	36.7	44.7	84.9

Table: Optimum Crop Productivity Ratings for Illinois Soil by K.R. Olson and J.M. Lang, Office of Research, ACES, University of Illinois at Champaign-Urbana. Version: 1/2/2012 Amended Table S2 B811

Crop yields and productivity indices for optimum management (B811) are maintained at the following NRES web site: <http://soilproductivity.nres.illinois.edu/>

** Indexes adjusted for slope and erosion according to Bulletin 811 Table S3

Soils data provided by USDA and NRCS. Soils data provided by University of Illinois at Champaign-Urbana.



mapbox

- Panoramic View
- Boundary 1
- Boundary 1.1
- Elementary Sch. Dist.