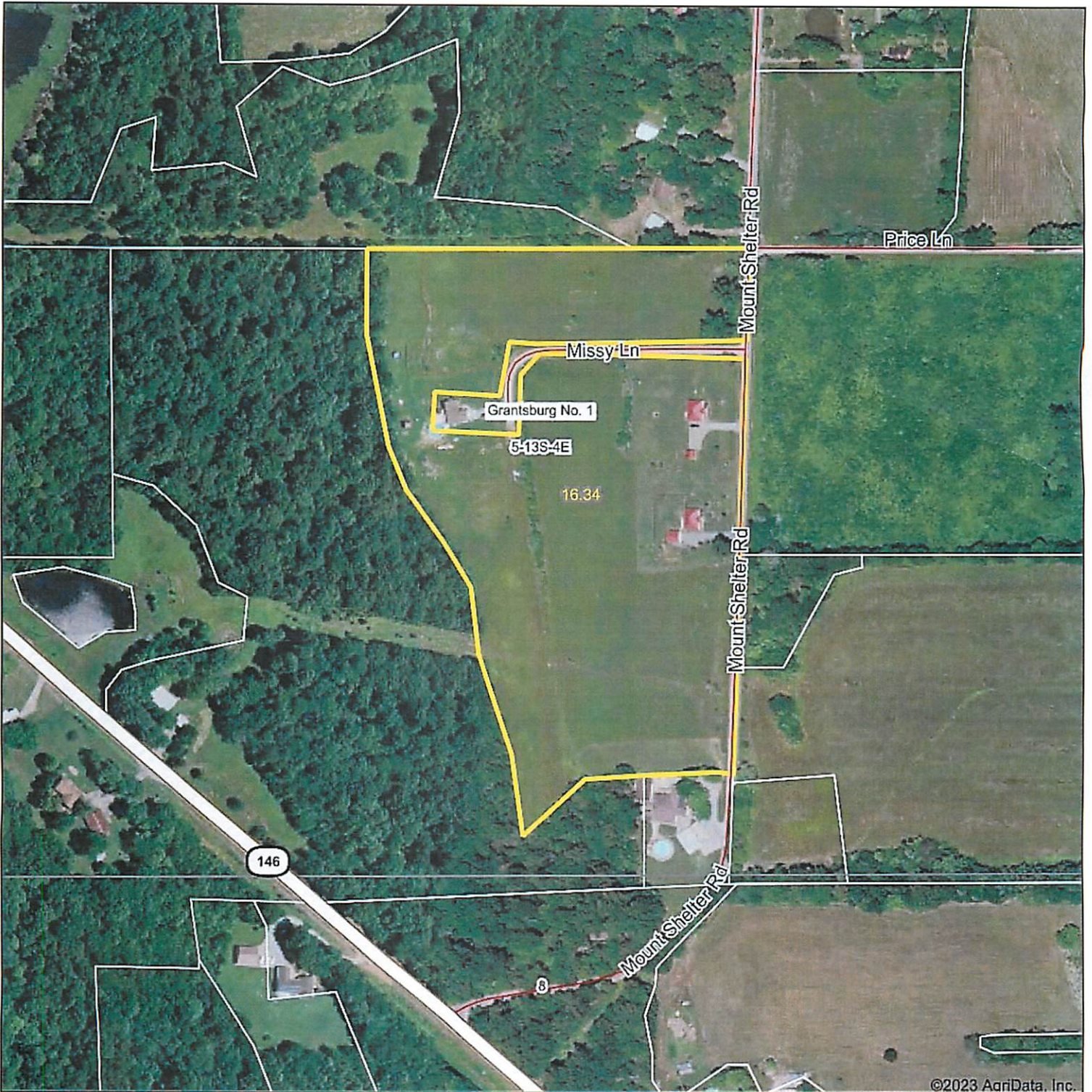


# Aerial Map



©2023 AgriData, Inc.

Boundary Center: 37° 24' 35.04, -88° 47' 19.9



Maps Provided By:



© AgriData, Inc. 2023 www.AgriDataInc.com

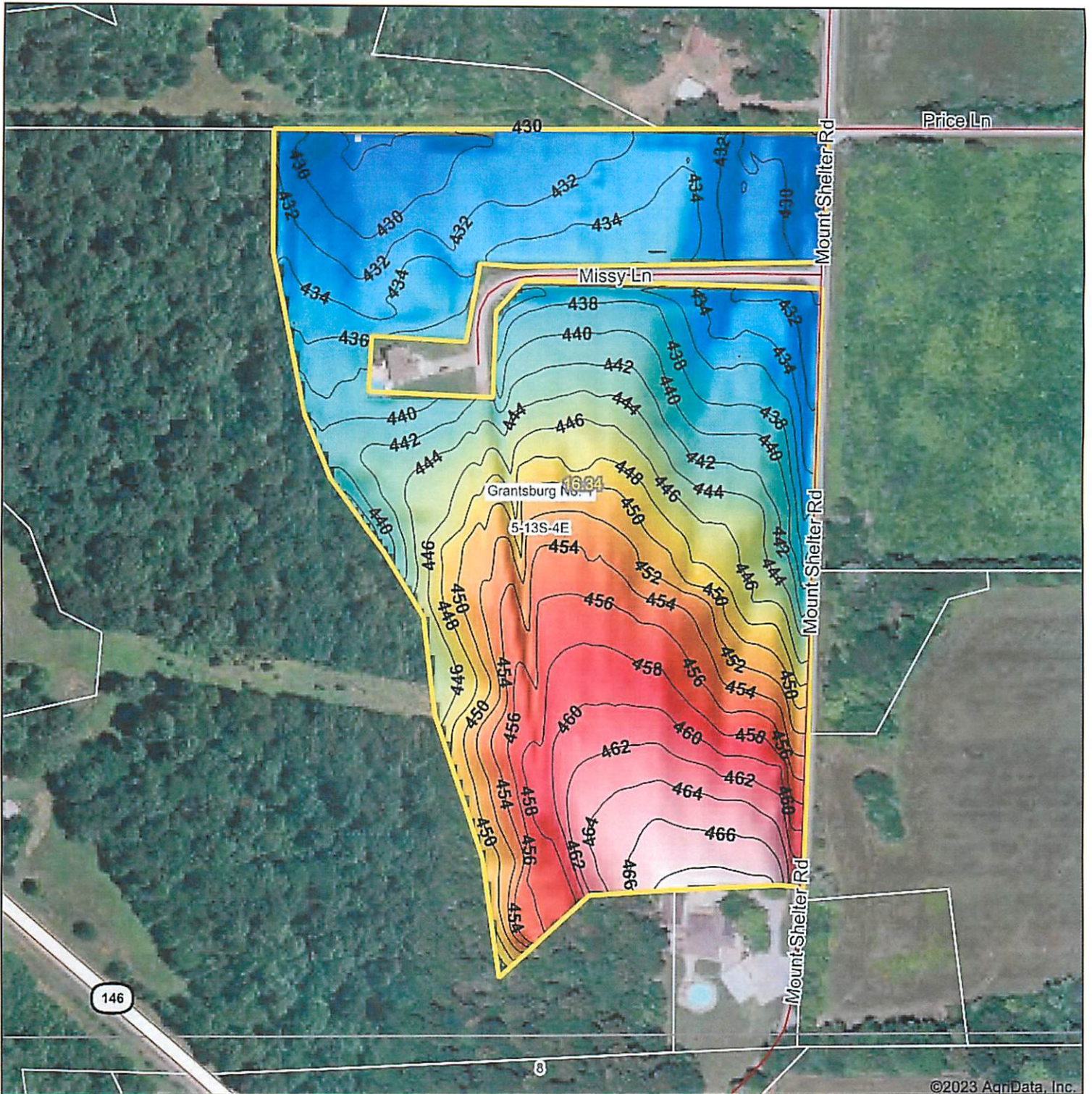
5-13S-4E  
Johnson County  
Illinois



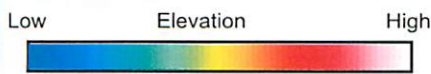
8/25/2023

Field borders provided by Farm Service Agency as of 5/21/2008.

# Topography Hillshade



©2023 AgriData, Inc.



Source: USGS 3 meter dem  
 Interval(ft): 2  
 Min: 427.3  
 Max: 468.9  
 Range: 41.6  
 Average: 444.8  
 Standard Deviation: 11.19 ft



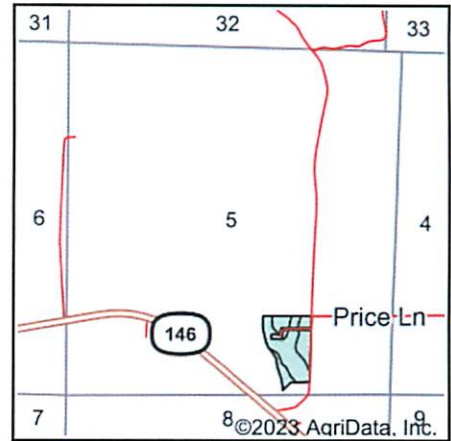
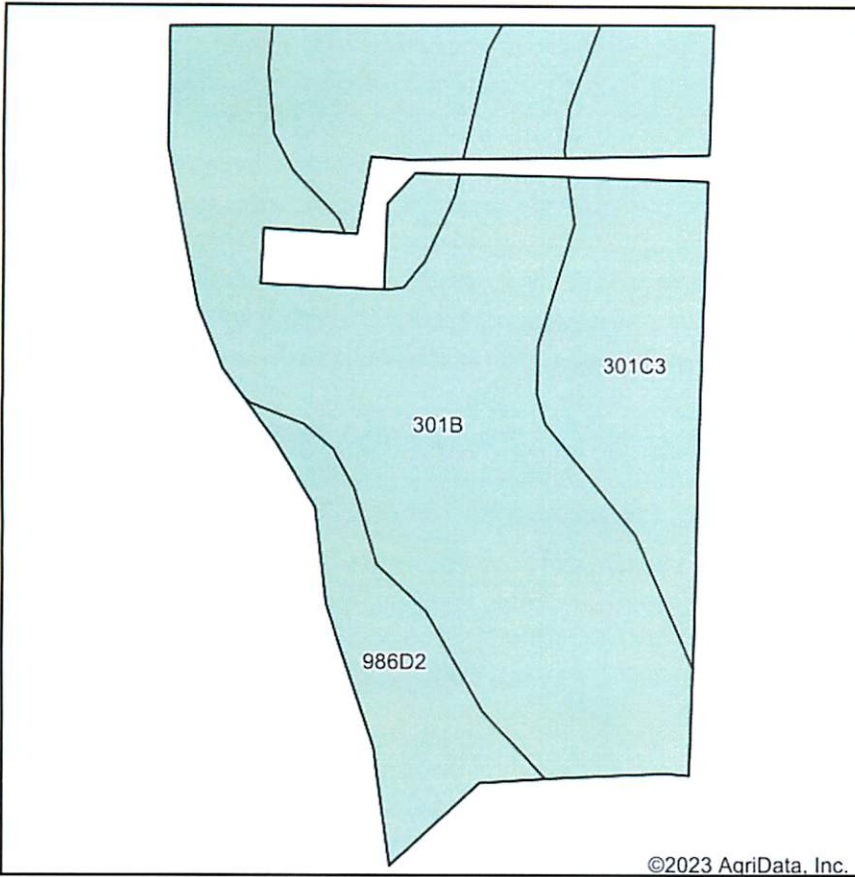
5-13S-4E  
 Johnson County  
 Illinois

Boundary Center: 37° 24' 35.04, -88° 47' 19.9



© AgriData, Inc. 2023 www.AgriDataInc.com  
 Field borders provided by Farm Service Agency as of 5/21/2008.

# Soils Map



State: **Illinois**  
 County: **Johnson**  
 Location: **5-13S-4E**  
 Township: **Grantsburg No. 1**  
 Acres: **16.34**  
 Date: **8/25/2023**



Maps Provided By:



Soils data provided by USDA and NRCS.

©2023 AgriData, Inc.

Area Symbol: IL087, Soil Area Version: 16

Code	Soil Description	Acres	Percent of field	Corn Bu/A	Soybeans Bu/A	Wheat Bu/A	Grass-legume e hay, T/A	Crop productivity index for optimum management
**301B	Grantsburg silt loam, 2 to 5 percent slopes	9.10	55.7%	**133	**46	**54	0.00	**101
**301C3	Grantsburg silt loam, 5 to 10 percent slopes, severely eroded	5.42	33.2%	**99	**34	**41	0.00	**75
**986D2	Wellston-Berks complex, 10 to 18 percent slopes, eroded	1.82	11.1%	**87	**30	**35	**2.68	**66
<b>Weighted Average</b>				<b>116.6</b>	<b>40.2</b>	<b>47.6</b>	<b>0.30</b>	<b>88.5</b>

**Table: Optimum Crop Productivity Ratings for Illinois Soil by K.R. Olson and J.M. Lang, Office of Research, ACES, University of Illinois at Champaign-Urbana. Version: 1/2/2012 Amended Table S2 B811**

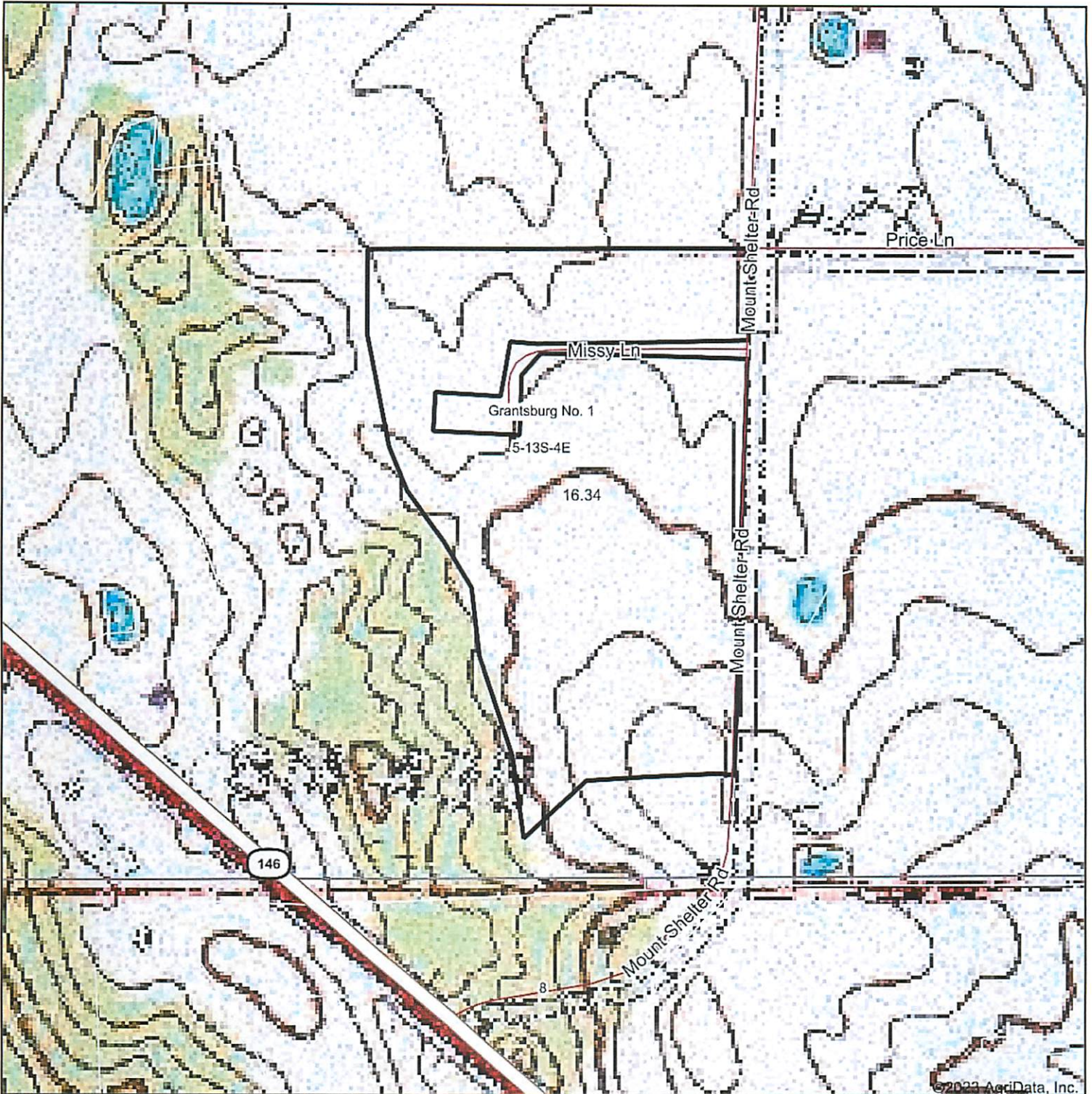
Crop yields and productivity indices for optimum management (B811) are maintained at the following NRES web site: <http://soilproductivity.nres.illinois.edu/>

\*\* Indexes adjusted for slope and erosion according to Bulletin 811 Table S3

e Soils in the well drained group were not rated for grass-legume and are shown with a zero "0".

Soils data provided by USDA and NRCS. Soils data provided by University of Illinois at Champaign-Urbana.

# Topography Map



©2023 AgriData, Inc.

Map Center: 37° 24' 34.86, -88° 47' 20.18



Maps Provided By:



© AgriData, Inc. 2023 www.AgriDataInc.com

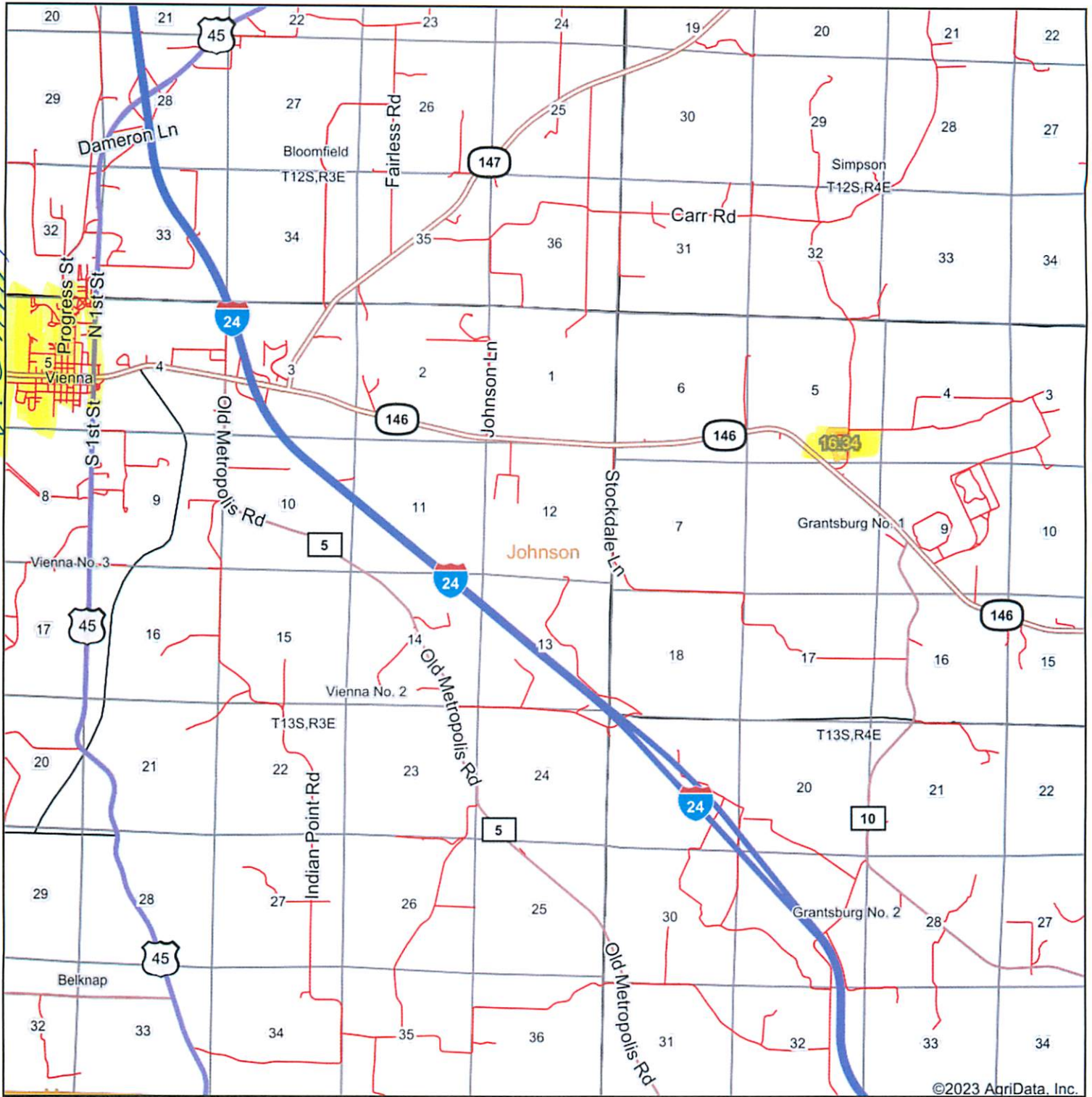
5-13S-4E  
Johnson County  
Illinois



8/25/2023

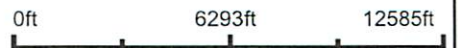
Field borders provided by Farm Service Agency as of 5/21/2008.

# Overview Map



©2023 AgriData, Inc.

Map Center: 37° 23' 49.78, -88° 49' 46.52



8/25/2023