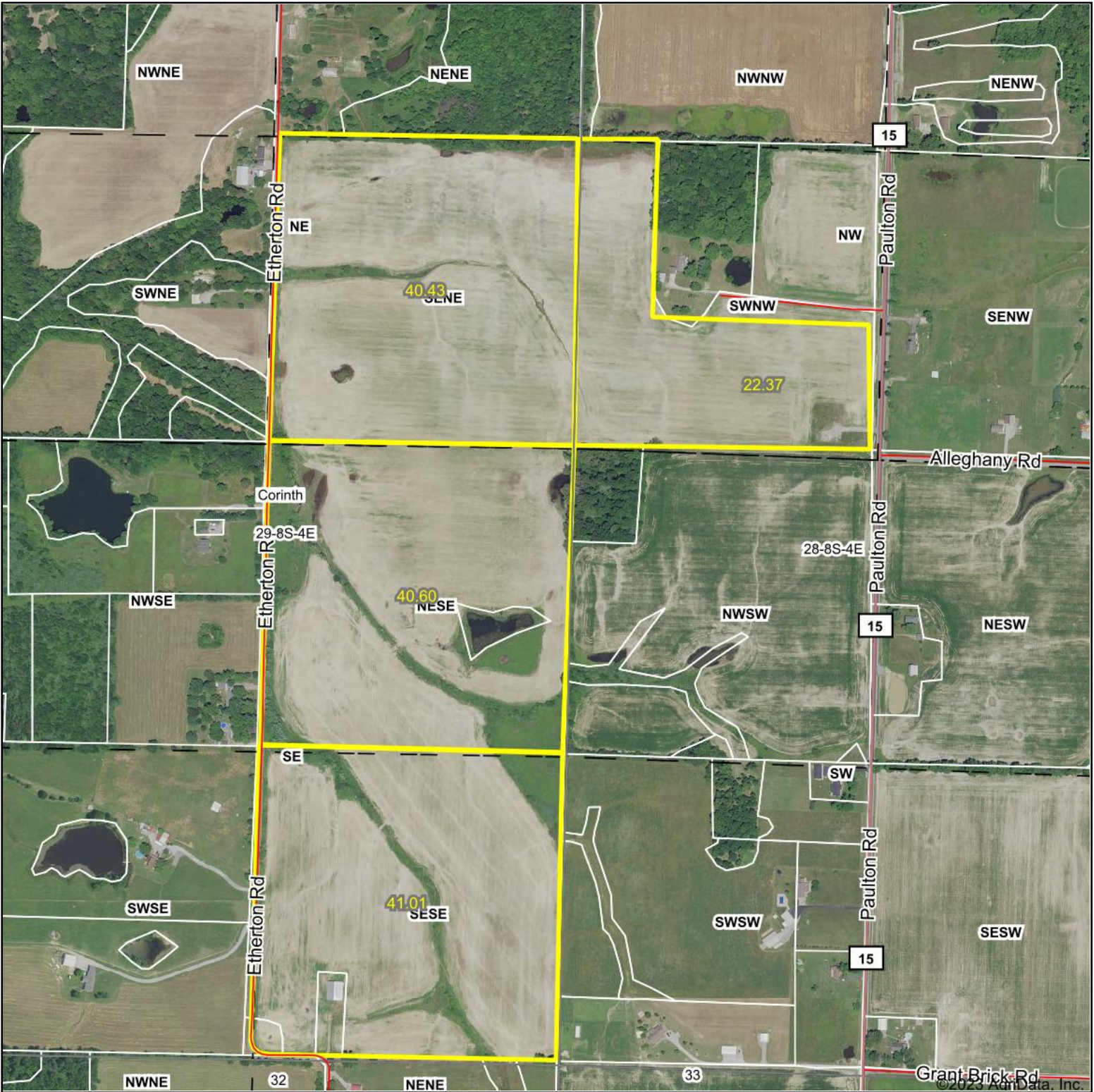
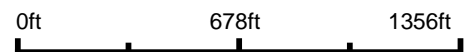


Aerial Map



Boundary Center: 37° 47' 45.89, -88° 46' 50.75



Maps Provided By:



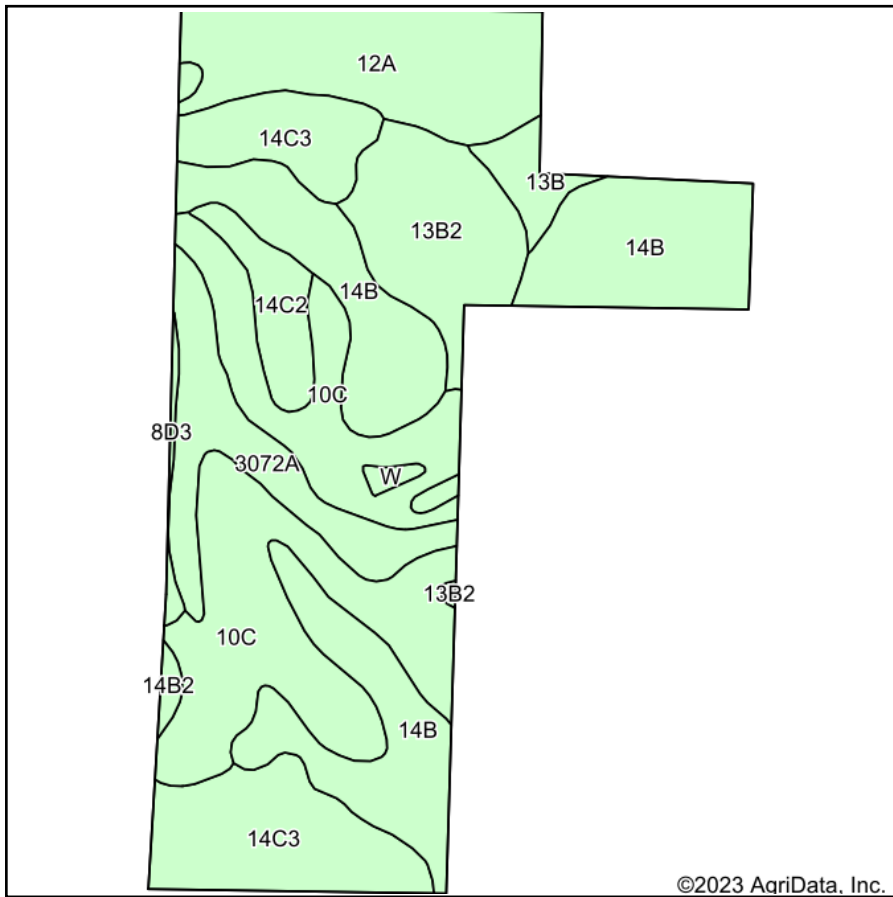
© AgriData, Inc. 2023 www.AgriDataInc.com

29-8S-4E
Williamson County
Illinois

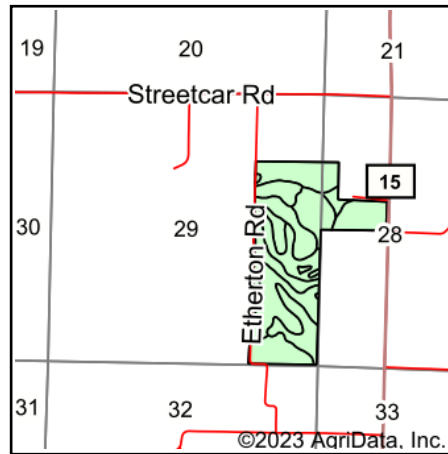


7/27/2023

Soils Map



Soils data provided by USDA and NRCS.



State: **Illinois**
 County: **Williamson**
 Location: **28-8S-4E**
 Township: **Corinth**
 Acres: **145.22**
 Date: **7/27/2023**



Area Symbol: IL199, Soil Area Version: 17

Code	Soil Description	Acres	Percent of field	Corn Bu/A	Soybeans Bu/A	Wheat Bu/A	Crop productivity index for optimum management
**14B	Ava silt loam, 2 to 5 percent slopes	36.93	25.4%	**134	**44	**54	**99
**10C	Plumfield silty clay loam, 5 to 10 percent slopes	35.97	24.8%	**103	**34	**39	**78
**14C3	Ava silty clay loam, 5 to 10 percent slopes, severely eroded	20.13	13.9%	**100	**33	**41	**74
12A	Wynoose silt loam, 0 to 2 percent slopes	17.73	12.2%	128	42	51	97
**13B2	Bluford silt loam, 2 to 5 percent slopes, eroded	13.44	9.3%	**129	**42	**52	**96
3072A	Sharon silt loam, 0 to 2 percent slopes, frequently flooded	11.28	7.8%	164	53	63	122
**14C2	Ava silt loam, 5 to 10 percent slopes, eroded	4.87	3.4%	**122	**40	**50	**90
**13B	Bluford silt loam, 2 to 5 percent slopes	2.84	2.0%	**135	**44	**54	**100
**8D3	Hickory clay loam, 10 to 18 percent slopes, severely eroded	0.79	0.5%	**98	**33	**40	**75
**14B2	Ava silt loam, 2 to 5 percent slopes, eroded	0.67	0.5%	**126	**41	**51	**93
W	Water	0.57	0.4%				
Weighted Average				121.6	39.9	48.2	90.8

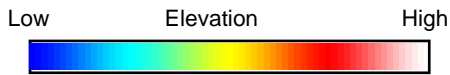
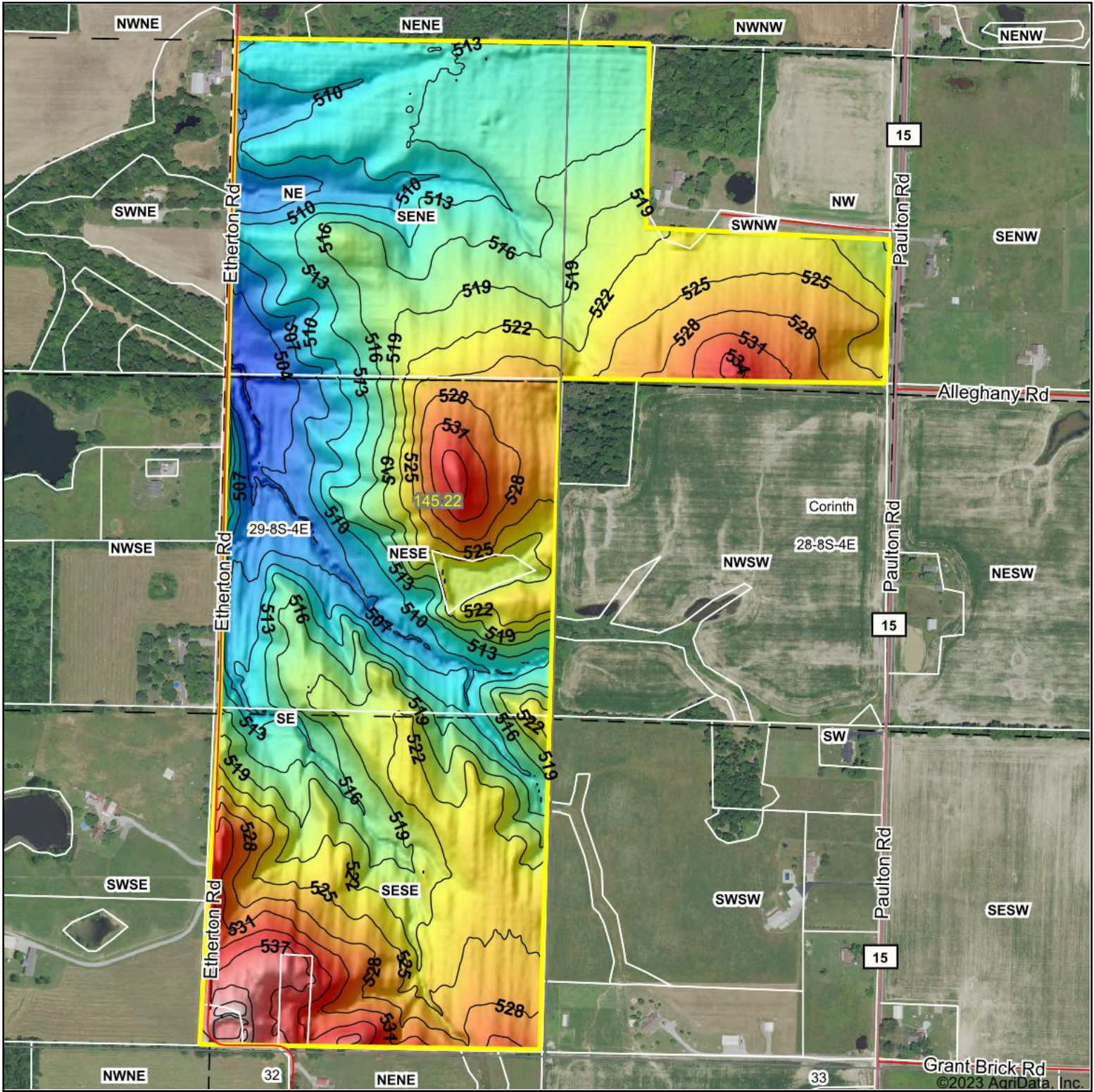
Table: Optimum Crop Productivity Ratings for Illinois Soil by K.R. Olson and J.M. Lang, Office of Research, ACES, University of Illinois at Champaign-Urbana. Version: 1/2/2012 Amended Table S2 B811

Crop yields and productivity indices for optimum management (B811) are maintained at the following NRES web site: <http://soilproductivity.nres.illinois.edu/>

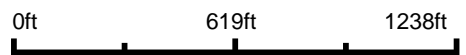
** Indexes adjusted for slope and erosion according to Bulletin 811 Table S3

Soils data provided by USDA and NRCS. Soils data provided by University of Illinois at Champaign-Urbana.

Topography Hillshade



Source: USGS 3 meter dem
 Interval(ft): 3
 Min: 499.5
 Max: 545.4
 Range: 45.9
 Average: 518.7
 Standard Deviation: 8.01 ft



29-8S-4E
Williamson County
Illinois

Boundary Center: 37° 47' 45.88, -88° 46' 50.88



© AgriData, Inc. 2023 www.AgridataInc.com
 Field borders provided by Farm Service Agency as of 5/21/2008.