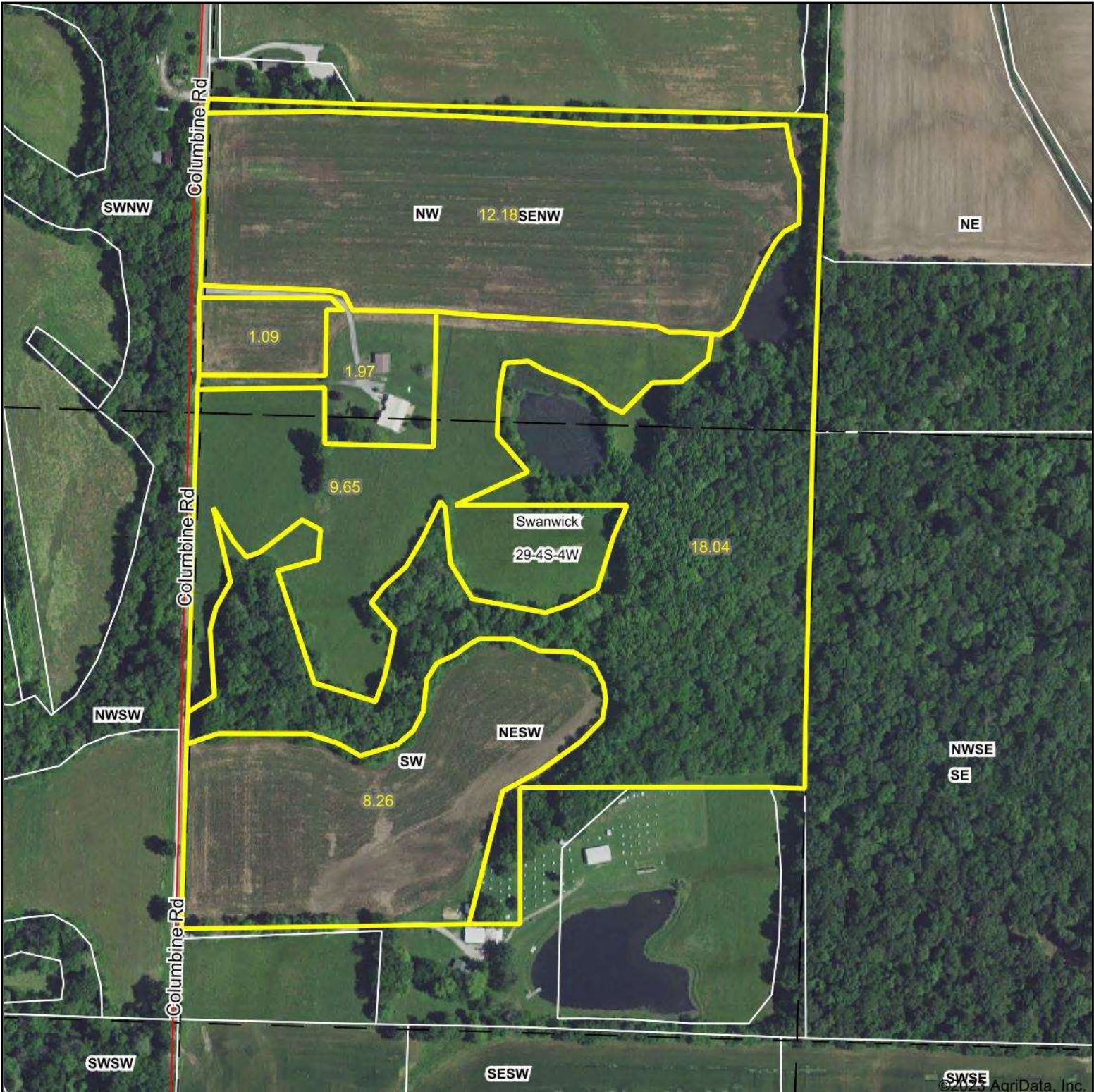


# Aerial Map



Boundary Center: 38° 9' 11.12, -89° 34' 0.4

0ft 341ft 681ft



**29-4S-4W**  
**Perry County**  
**Illinois**

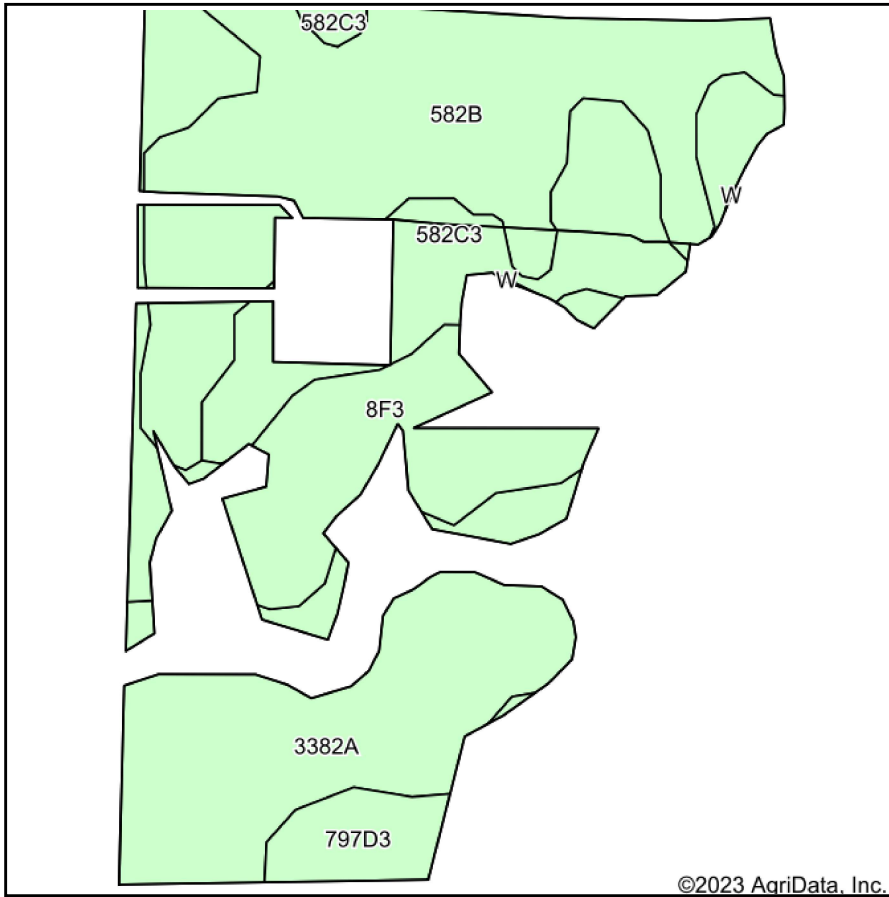


6/21/2023

Maps Provided By:  
 **surety**  
CUSTOMIZED ONLINE MAPPING  
© AgriData, Inc. 2023 www.AgriDataInc.com

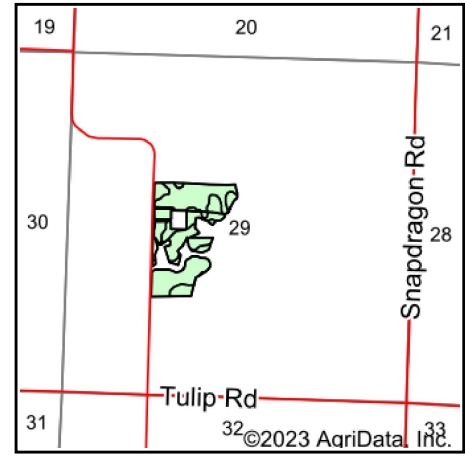
Field borders provided by Farm Service Agency as of 5/21/2008.

# Soils Map



©2023 AgriData, Inc.

Soils data provided by USDA and NRCS.



State: **Illinois**  
 County: **Perry**  
 Location: **29-4S-4W**  
 Township: **Swanwick**  
 Acres: **31.18**  
 Date: **6/21/2023**



Maps Provided By:



© AgriData, Inc. 2023

www.AgriDataInc.com



Area Symbol: IL145, Soil Area Version: 19

| Code                    | Soil Description   | Acres | Percent of field | Corn Bu/A  | Soybeans Bu/A | Wheat Bu/A  | Crop productivity index for optimum management |
|-------------------------|--|-------|------------------|------------|---------------|-------------|--|
| **582B                  | Homen silt loam, 2 to 5 percent slopes                                   | 11.18 | 35.9%            | **149      | **47          | **55        | **108  |
| 3382A                   | Belknap silt loam, 0 to 2 percent slopes, frequently flooded             | 7.77  | 24.9%            | 156        | 52            | 63          | 117  |
| **8F3                   | Hickory clay loam, 18 to 35 percent slopes, severely eroded              | 5.90  | 18.9%            | **71       | **24          | **29        | **54   |
| **582C3                 | Homen silty clay loam, 5 to 10 percent slopes, severely eroded           | 4.99  | 16.0%            | **129      | **40          | **48        | **94   |
| **797D3                 | Hickory-Homen silty clay loams, 10 to 18 percent slopes, severely eroded | 1.34  | 4.3%             | **107      | **36          | **42        | **80   |
| <b>Weighted Average</b> |  |       |                  | <b>131</b> | <b>42.3</b>   | <b>50.4</b> | <b>96.6</b>                                    |

**Table: Optimum Crop Productivity Ratings for Illinois Soil by K.R. Olson and J.M. Lang, Office of Research, ACES, University of Illinois at Champaign-Urbana.** Version: 1/2/2012 Amended Table S2 B811

Crop yields and productivity indices for optimum management (B811) are maintained at the following NRES web site: <http://soilproductivity.nres.illinois.edu/>

\*\* Indexes adjusted for slope and erosion according to Bulletin 811 Table S3

Soils data provided by USDA and NRCS. Soils data provided by University of Illinois at Champaign-Urbana.