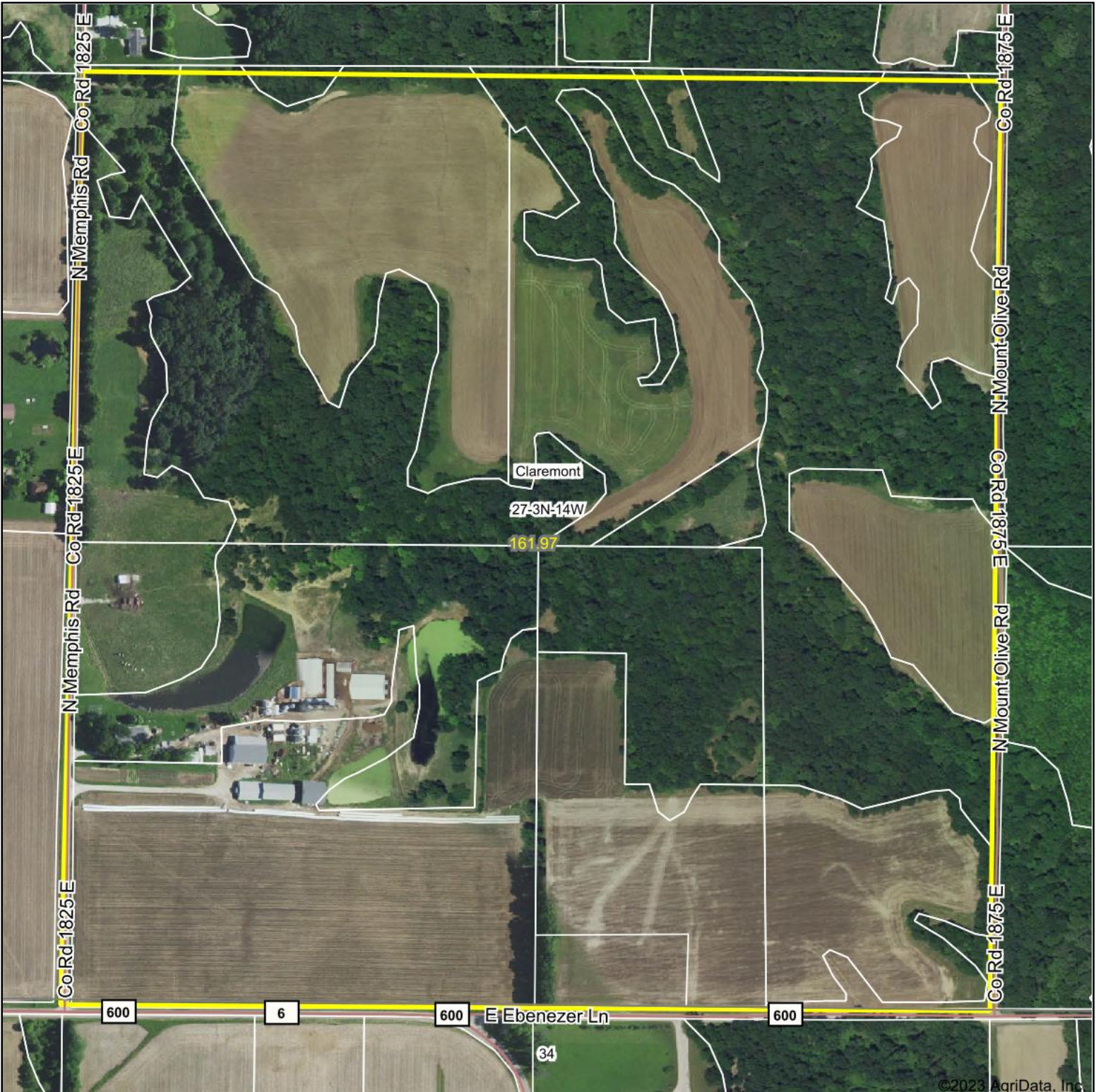


Aerial Map



©2023 AgriData, Inc.

Boundary Center: 38° 39' 43.06, -87° 57' 23.51



27-3N-14W
Richland County
Illinois



Maps Provided By:
surety
CUSTOMIZED ONLINE MAPPING
© AgriData, Inc. 2023 www.AgriDataInc.com

8/22/2023

Field borders provided by Farm Service Agency as of 5/21/2008.

Aerial Map



Boundary Center: 38° 39' 43.06, -87° 57' 23.51

0ft 446ft 892ft



27-3N-14W
Richland County
Illinois

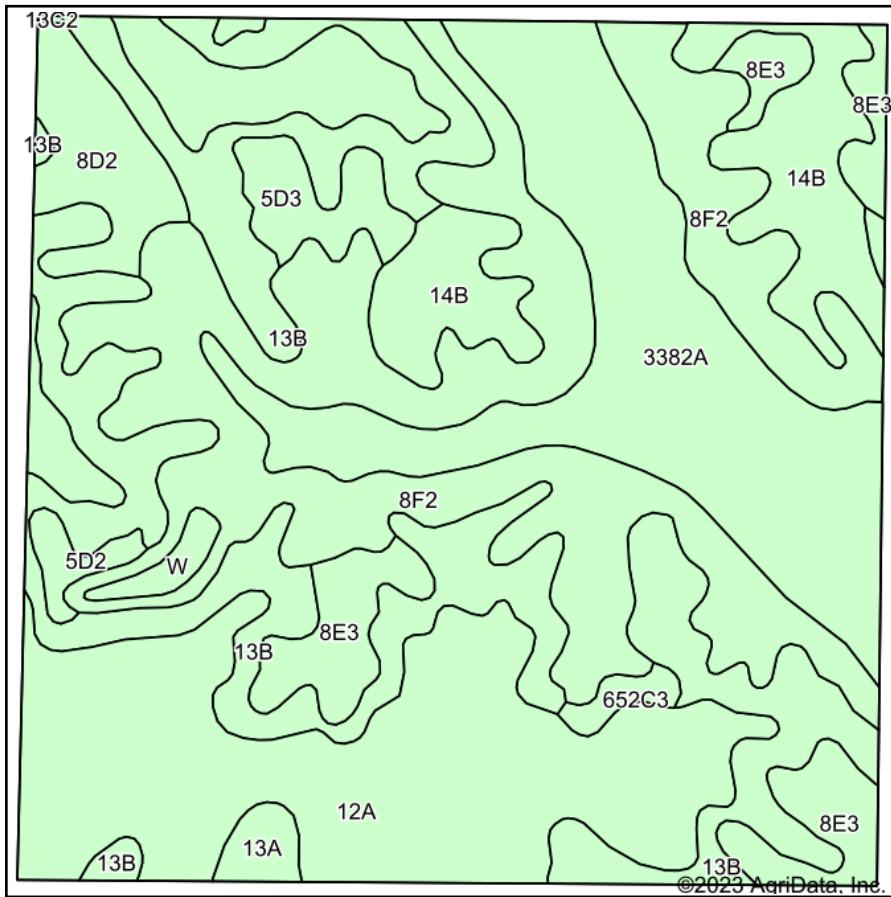


Maps Provided By:
surety
CUSTOMIZED ONLINE MAPPING
© AgriData, Inc. 2023 www.AgridataInc.com

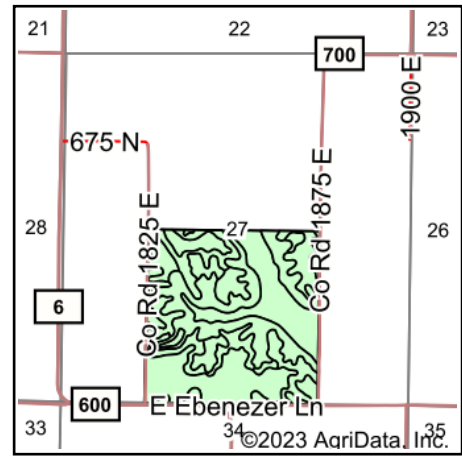
8/22/2023

Field borders provided by Farm Service Agency as of 5/21/2008.

Soils Map



Soils data provided by USDA and NRCS.



State: **Illinois**
 County: **Richland**
 Location: **27-3N-14W**
 Township: **Claremont**
 Acres: **161.97**
 Date: **8/22/2023**



Area Symbol: IL159, Soil Area Version: 14

Code	Soil Description	Acres	Percent of field	Corn Bu/A	Soybeans Bu/A	Wheat Bu/A	Grass-legume e hay, T/A	Crop productivity index for optimum management
**8F2	Hickory silt loam, 18 to 35 percent slopes, eroded	37.90	23.4%	**80	**27	**32	0.00	**61
12A	Wynoose silt loam, 0 to 2 percent slopes	35.53	21.9%	128	42	51	4.26	97
**13B	Bluford silt loam, 2 to 5 percent slopes	31.21	19.3%	**135	**44	**54	**3.36	**100
3382A	Belknap silt loam, 0 to 2 percent slopes, frequently flooded	25.59	15.8%	156	52	63	4.89	117
**14B	Ava silt loam, 2 to 5 percent slopes	11.17	6.9%	**134	**44	**54	0.00	**99
**8E3	Hickory clay loam, 18 to 25 percent slopes, severely eroded	8.66	5.3%	**82	**28	**33	0.00	**63
**8D2	Hickory silt loam, 10 to 18 percent slopes, eroded	4.83	3.0%	**108	**36	**44	0.00	**82
**5D3	Blair soils, 7 to 12 percent slopes, severely eroded	3.00	1.9%	**102	**33	**41	**3.25	**77
13A	Bluford silt loam, 0 to 2 percent slopes	1.16	0.7%	136	44	55	3.39	101
**5D2	Blair silt loam, 7 to 12 percent slopes, eroded	1.13	0.7%	**124	**41	**50	**3.95	**94
W	Water	0.93	0.6%					
**652C3	Passport silty clay loam, 5 to 10 percent slopes, severely eroded	0.86	0.5%	**108	**36	**47	**3.56	**82
Weighted Average				118.6	39.2	47.6	2.49	89.2

Table: Optimum Crop Productivity Ratings for Illinois Soil by K.R. Olson and J.M. Lang, Office of Research, ACES, University of Illinois at Champaign-Urbana. Version: 1/2/2012 Amended Table S2 B811

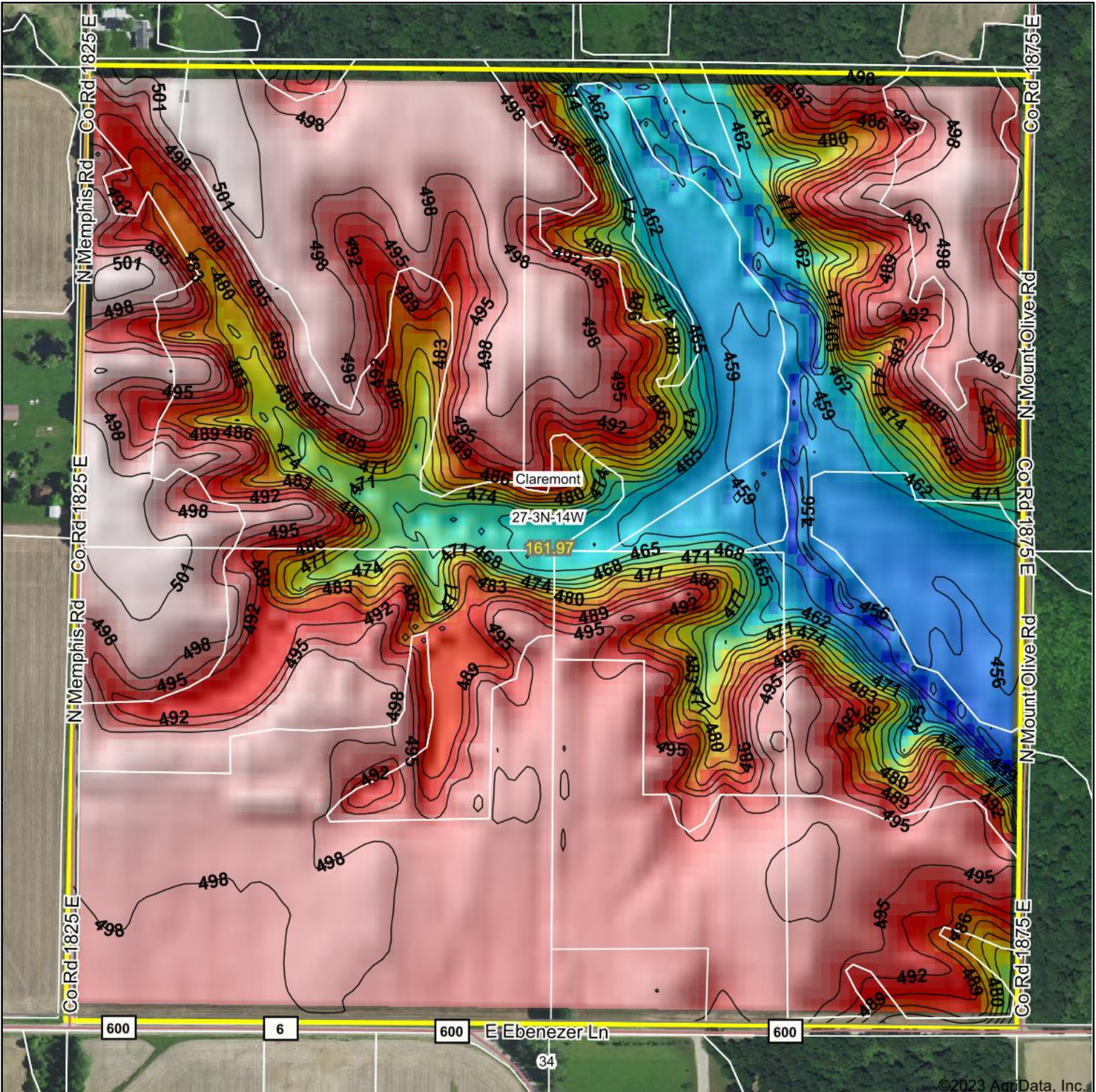
Crop yields and productivity indices for optimum management (B811) are maintained at the following NRES web site: <http://soilproductivity.nres.illinois.edu/>

** Indexes adjusted for slope and erosion according to Bulletin 811 Table S3

e Soils in the well drained group were not rated for grass-legume and are shown with a zero "0".

Soils data provided by USDA and NRCS. Soils data provided by University of Illinois at Champaign-Urbana.

Topography Hillshade



<p>Low Elevation High</p>	<p>Source: USGS 10 meter dem Interval(ft): 3 Min: 450.1 Max: 502.7 Range: 52.6 Average: 487.4 Standard Deviation: 14.44 ft</p>	<p>0ft 436ft 871ft</p> <p>27-3N-14W Richland County Illinois</p> <p>8/22/2023</p> <p>Boundary Center: 38° 39' 43.06, -87° 57' 23.51</p>
---------------------------	--	---



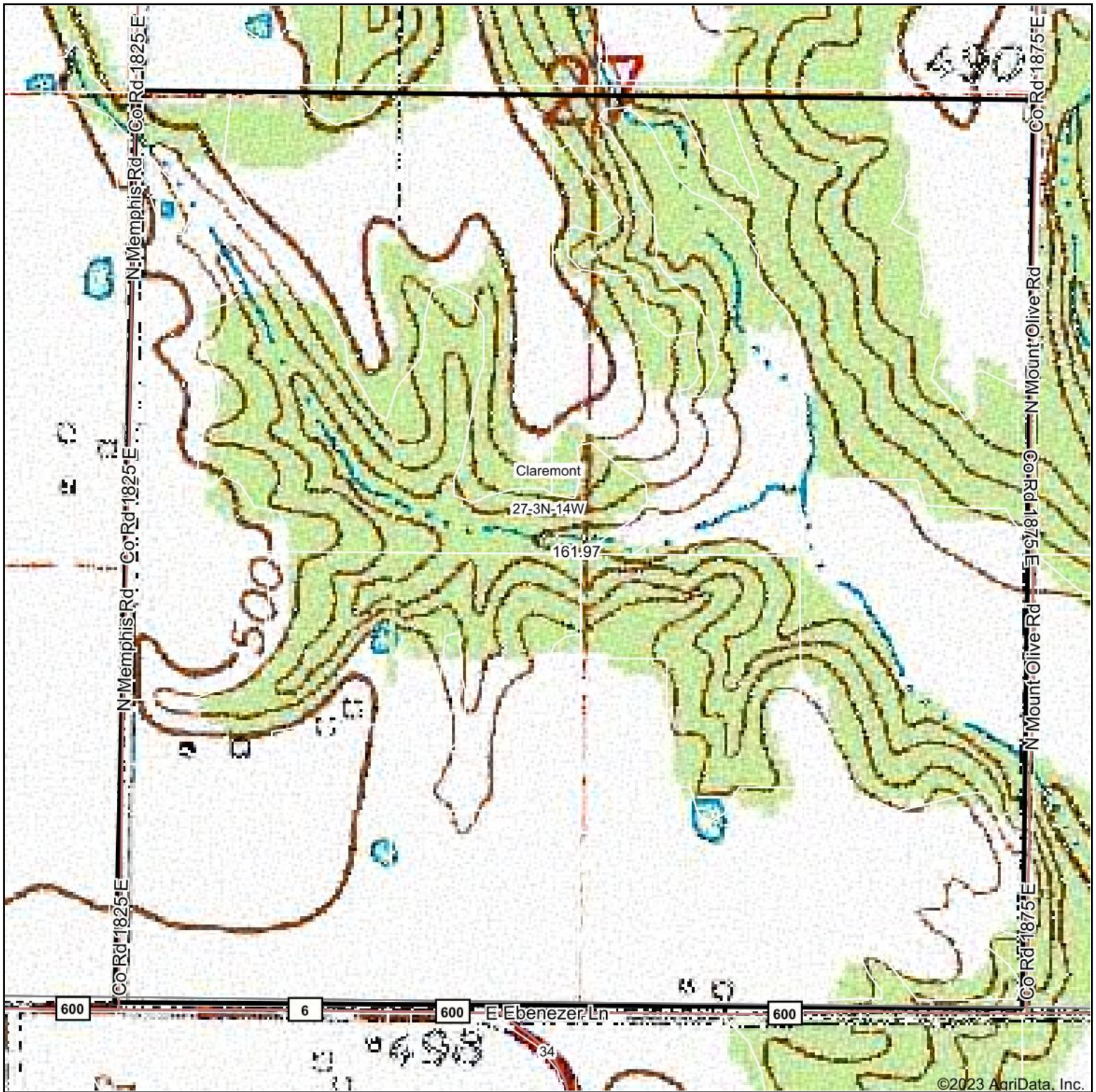
Maps Provided By:



© AgriData, Inc. 2023 www.AgriDataInc.com

Field borders provided by Farm Service Agency as of 5/21/2008.

Topography Map



©2023 AgriData, Inc.

Map Center: 38° 39' 43.16, -87° 57' 24.5



27-3N-14W
Richland County
Illinois



8/22/2023



Maps Provided By:



© AgriData, Inc. 2023

www.AgridataInc.com

Field borders provided by Farm Service Agency as of 5/21/2008.