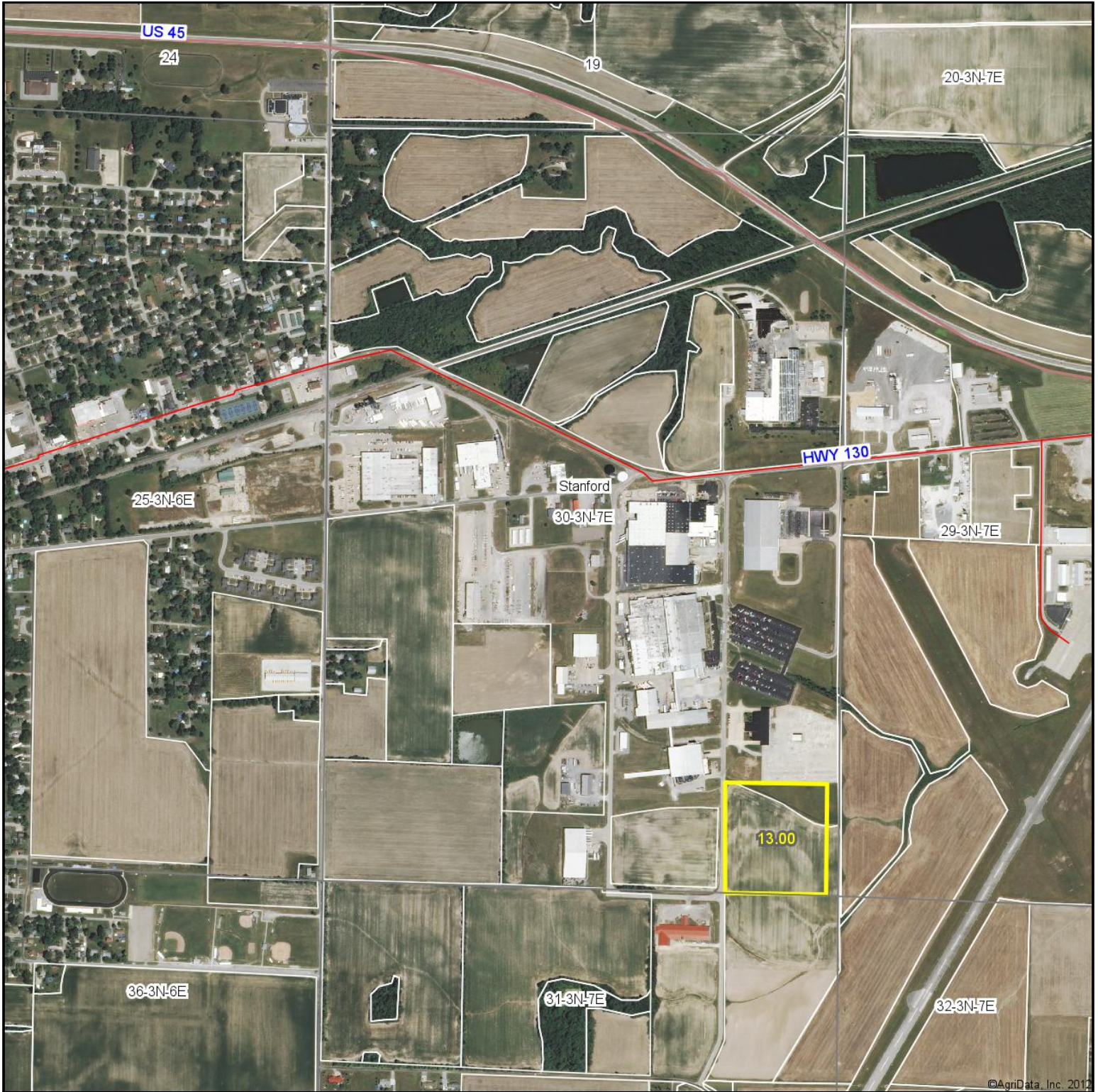


Aerial Map



©AgriData, Inc. 2012

map center: 38° 40' 10.56, 88° 27' 52.8

scale: 11714



4/21/2013



Maps provided by:



©AgriData, Inc. 2012

www.AgriDataInc.com

30-3N-7E
Clay County
Illinois

Aerial Map



Maps provided by:



©AgriData, Inc. 2012
www.AgriDataInc.com

30-3N-7E
Clay County
Illinois

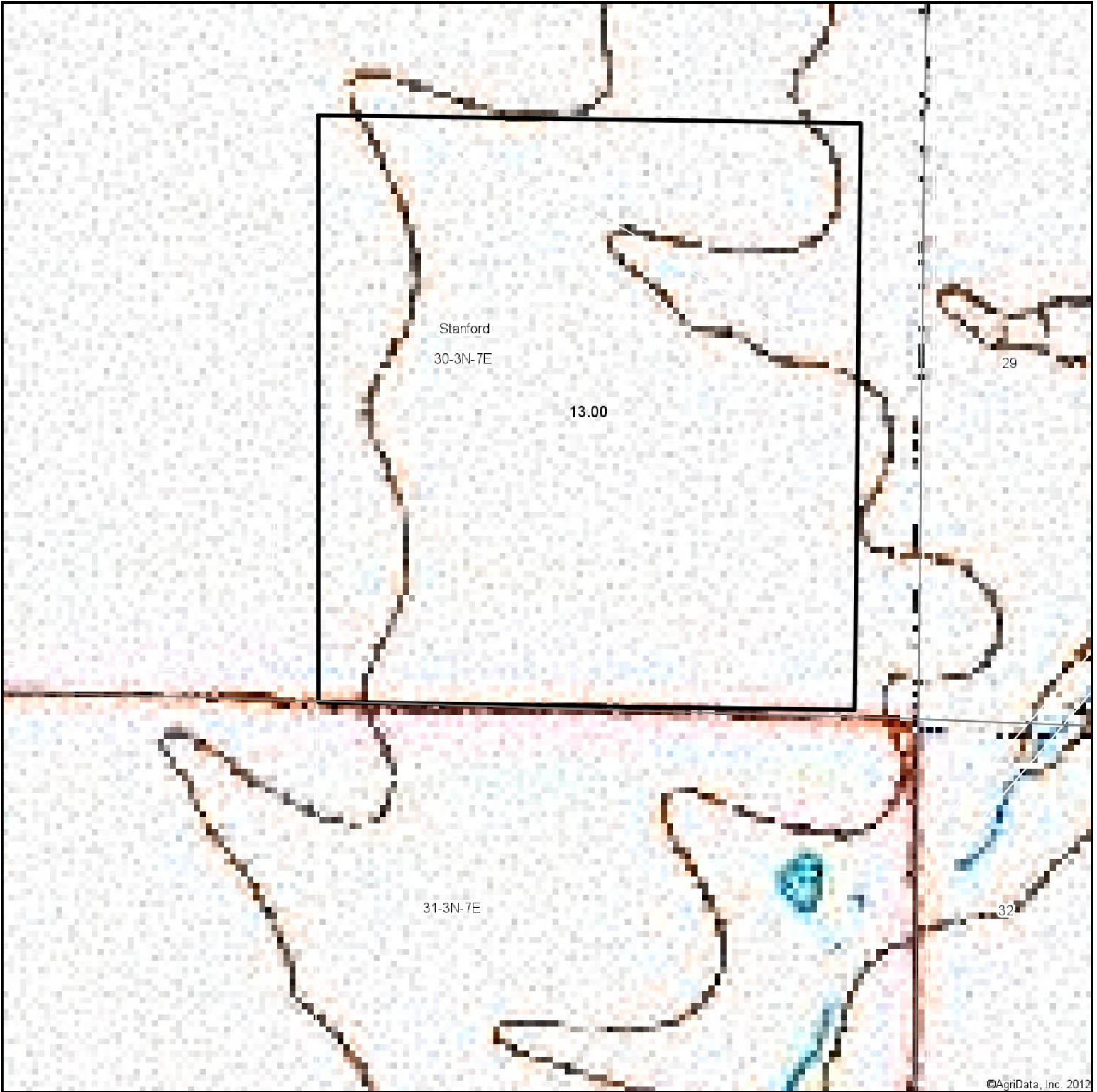
map center: 38° 39' 48.57, 88° 27' 32.61

scale: 2206



4/21/2013

Topography Map



Maps provided by:



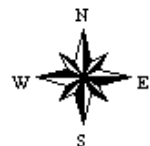
©AgriData, Inc. 2012

www.AgriDataInc.com

30-3N-7E
Clay County
Illinois

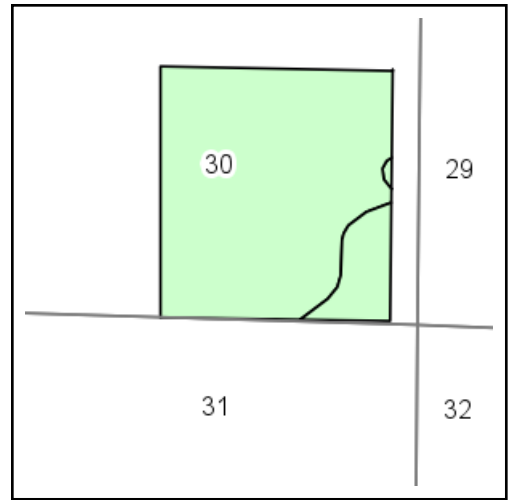
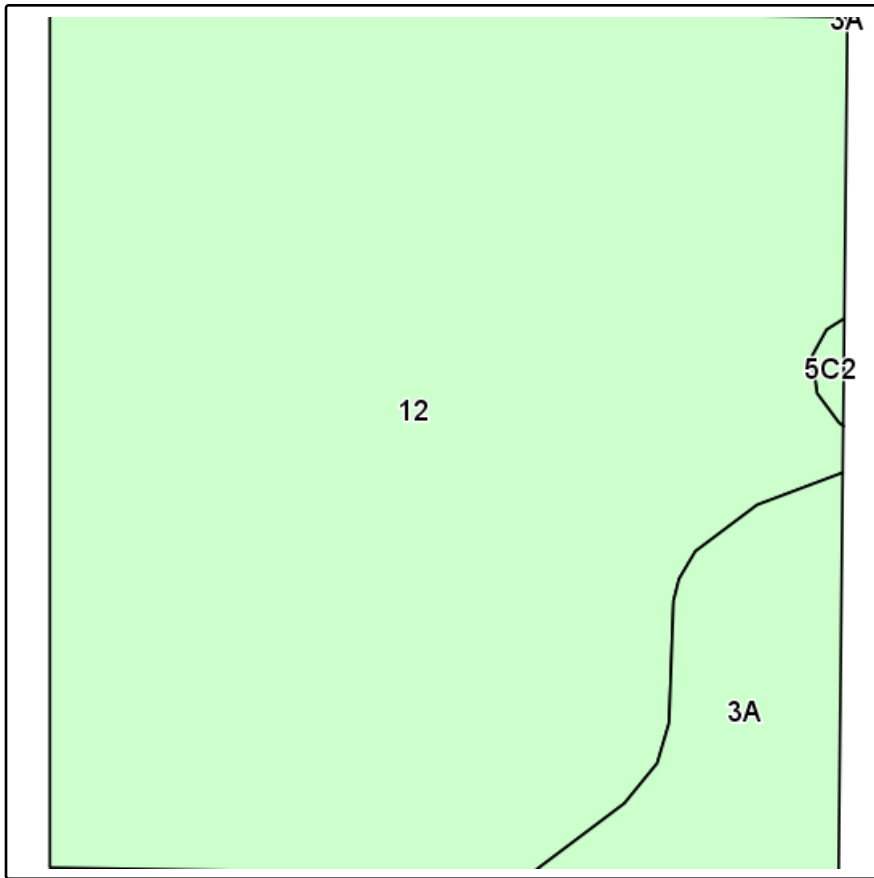
map center: 38° 39' 48.57, 88° 27' 32.61

scale: 2206



4/21/2013

Soils Map



State: **Illinois**
 County: **Clay**
 Location: **30-3N-7E**
 Township: **Stanford**
 Acres: **13**
 Date: **4/21/2013**



Maps provided by:



©AgriData, Inc 2012
 www.AgriDataInc.com

Field borders provided by Farm Service Agency as of 5/21/2008.
 Soils data provided by University of Illinois at Champaign-Urbana.

Code	Soil Description	Acres	Percent of field	Il. State Productivity Index Legend	Corn Bu/A	Soybeans Bu/A	Wheat Bu/A	Grass-legume e hay, T/A	Crop productivity index for optimum management
12	Wynoose silt loam	11.7	89.5%		128	42	51	4.26	97
3A	Hoyleton silt loam, 0 to 2 percent slopes	1.3	10.2%		146	46	58	4.64	108
Weighted Average					129.5	42.3	51.6	4.29	97.8

Table: Optimum Crop Productivity Ratings for Illinois Soil by K.R. Olson and J.M. Lang, Office of Research, ACES, University of Illinois at Champaign-Urbana. Version: 1/2/2012 Amended Table S2 B811 (Updated 1/10/2012)

Crop yields and productivity indices for optimum management (B811) are maintained at the following NRES web site: <http://soilproductivity.nres.illinois.edu/>

** Indexes adjusted for slope and erosion according to Bulletin 811 Table S3

e Soils in the well drained group were not rated for grass-legume and are shown with a zero "0".