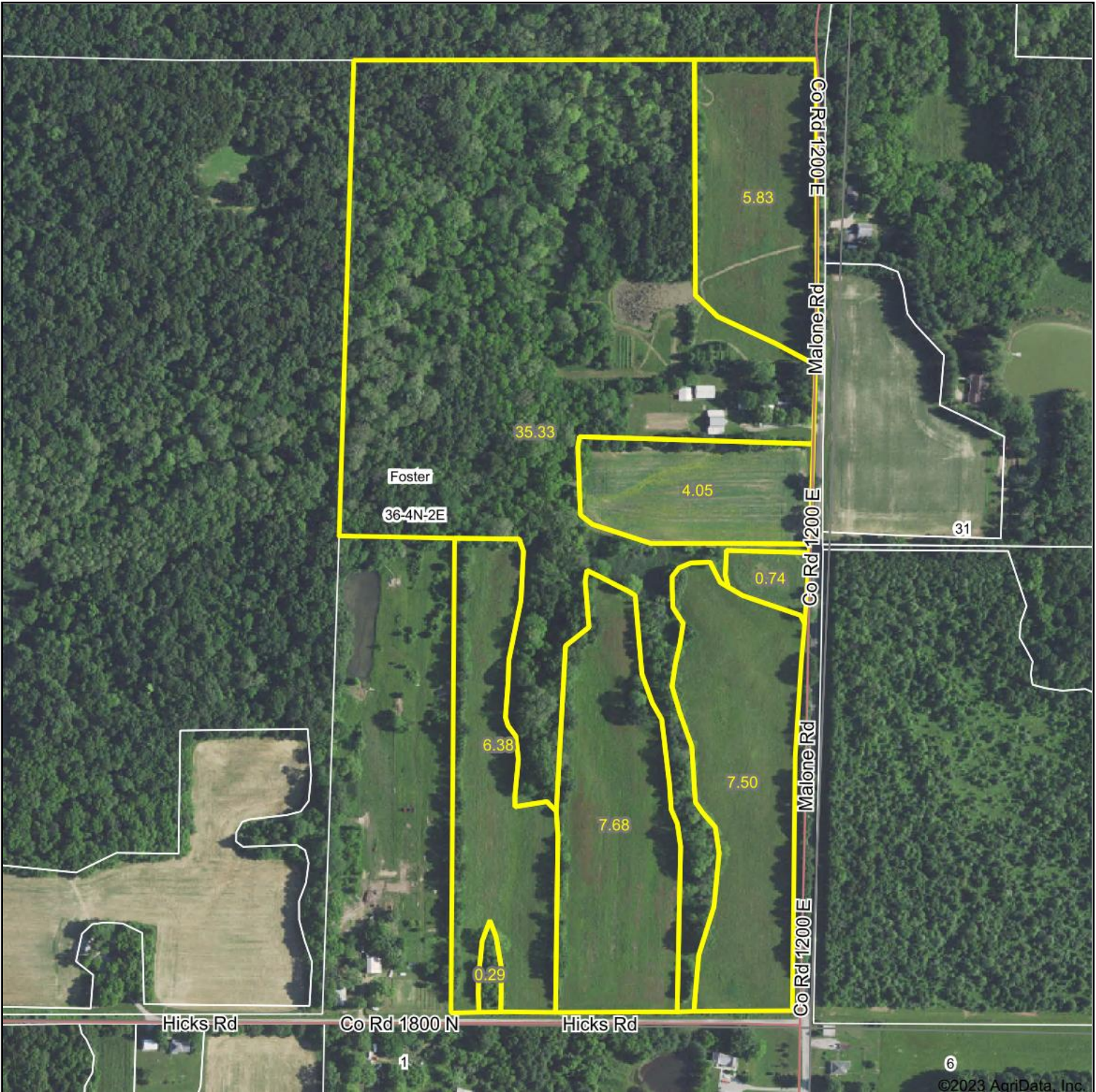


Aerial Map



©2023 AgriData, Inc.

Map Center: 38° 44' 25.38, -88° 55' 27.68



36-4N-2E
Marion County
Illinois

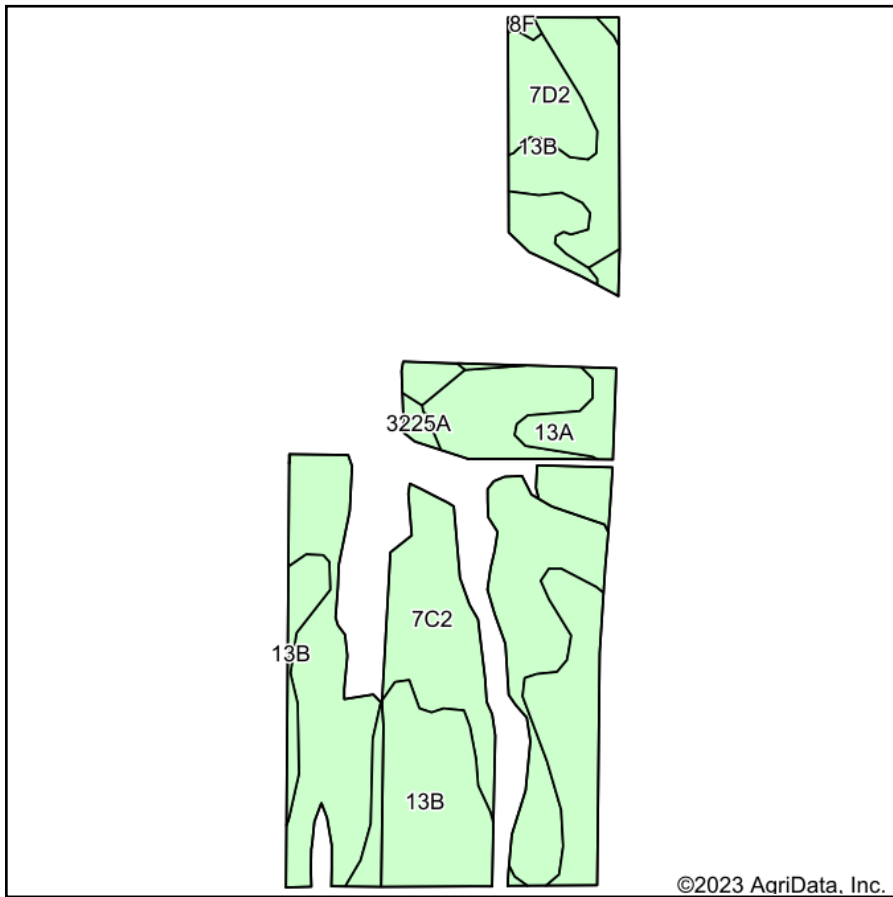


4/27/2023

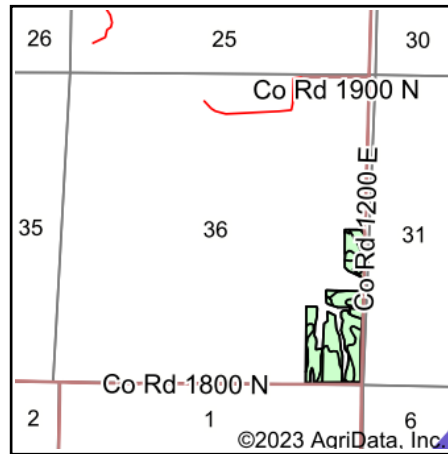
Maps Provided By:
surety
 CUSTOMIZED ONLINE MAPPING
 © AgriData, Inc. 2023 www.AgriDataInc.com

Field borders provided by Farm Service Agency as of 5/21/2008.

Soils Map



Soils data provided by USDA and NRCS.



State: **Illinois**
 County: **Marion**
 Location: **36-4N-2E**
 Township: **Foster**
 Acres: **32.18**
 Date: **5/11/2023**



Area Symbol: IL121, Soil Area Version: 19

Code	Soil Description	Acres	Percent of field	Corn Bu/A	Soybeans Bu/A	Wheat Bu/A	Grass-legume e hay, T/A	Crop productivity index for optimum management
**7C2	Atlas silt loam, 5 to 10 percent slopes, eroded	16.22	50.4%	**105	**37	**41	**3.16	**81
**13B	Bluford silt loam, 2 to 5 percent slopes	11.39	35.4%	**135	**44	**54	**3.36	**100
**7D2	Atlas silt loam, 10 to 18 percent slopes, eroded	2.91	9.0%	**98	**34	**39	**2.95	**76
13A	Bluford silt loam, 0 to 2 percent slopes	1.25	3.9%	136	44	55	3.39	101
3225A	Holton silt loam, 0 to 2 percent slopes, frequently flooded	0.24	0.7%	135	43	50	4.26	100
**8F	Hickory silt loam, 18 to 35 percent slopes	0.17	0.5%	**86	**29	**35	0.00	**65
Weighted Average				116.3	39.5	46	3.21	88.1

Table: Optimum Crop Productivity Ratings for Illinois Soil by K.R. Olson and J.M. Lang, Office of Research, ACES, University of Illinois at Champaign-Urbana. Version: 1/2/2012 Amended Table S2 B811

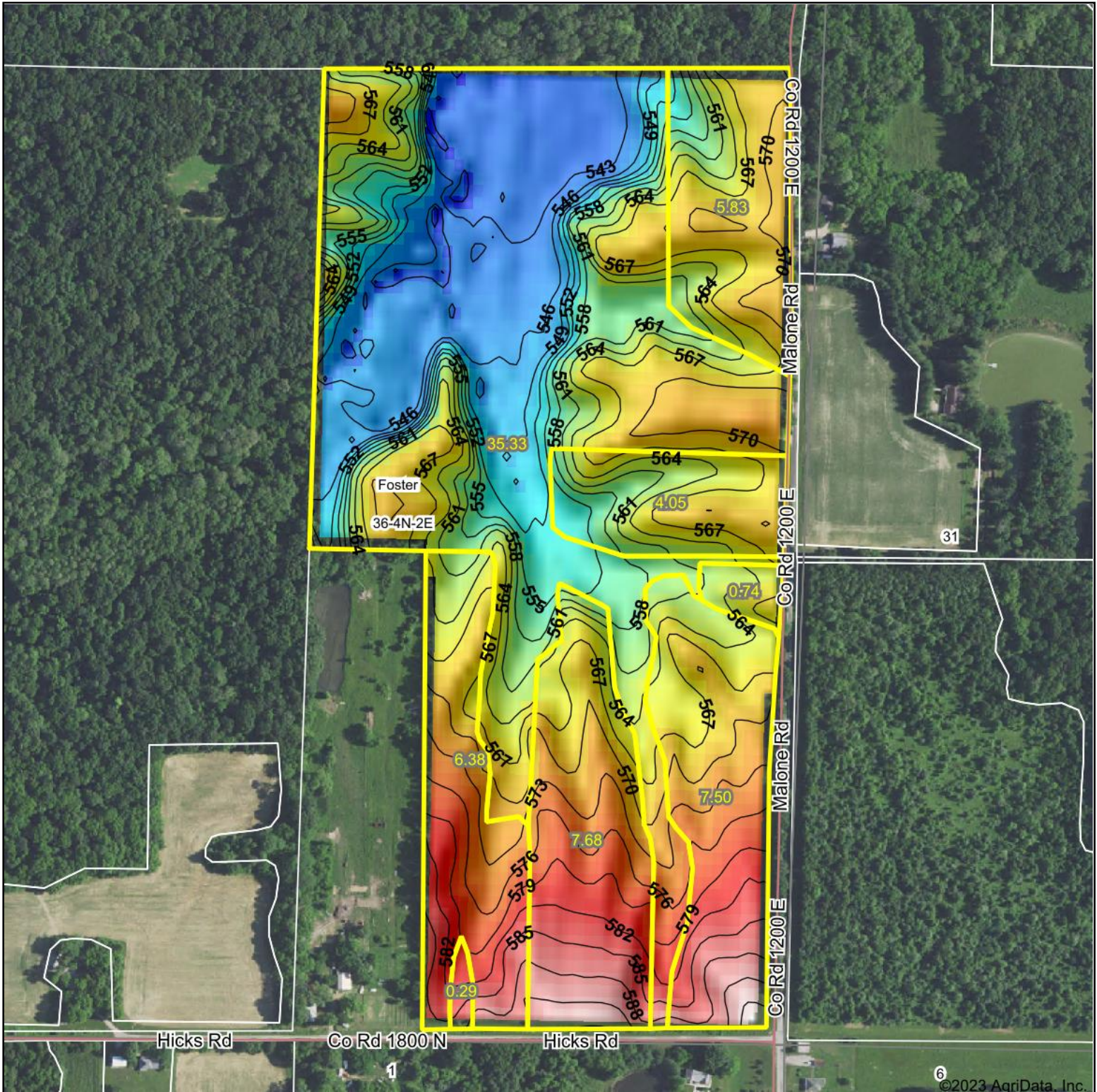
Crop yields and productivity indices for optimum management (B811) are maintained at the following NRES web site: <http://soilproductivity.nres.illinois.edu/>

** Indexes adjusted for slope and erosion according to Bulletin 811 Table S3

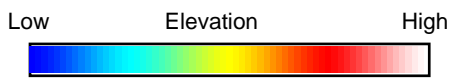
e Soils in the well drained group were not rated for grass-legume and are shown with a zero "0".

Soils data provided by USDA and NRCS. Soils data provided by University of Illinois at Champaign-Urbana.

Topography Hillshade



©2023 AgriData, Inc.



Source: USGS 10 meter dem



Interval(ft): 3

Min: 536.4

Max: 596.8

Range: 60.4

Average: 563.6

Standard Deviation: 13.02 ft



4/27/2023

36-4N-2E
Marion County
Illinois

map center: 38° 44' 25.38, -88° 55' 27.68



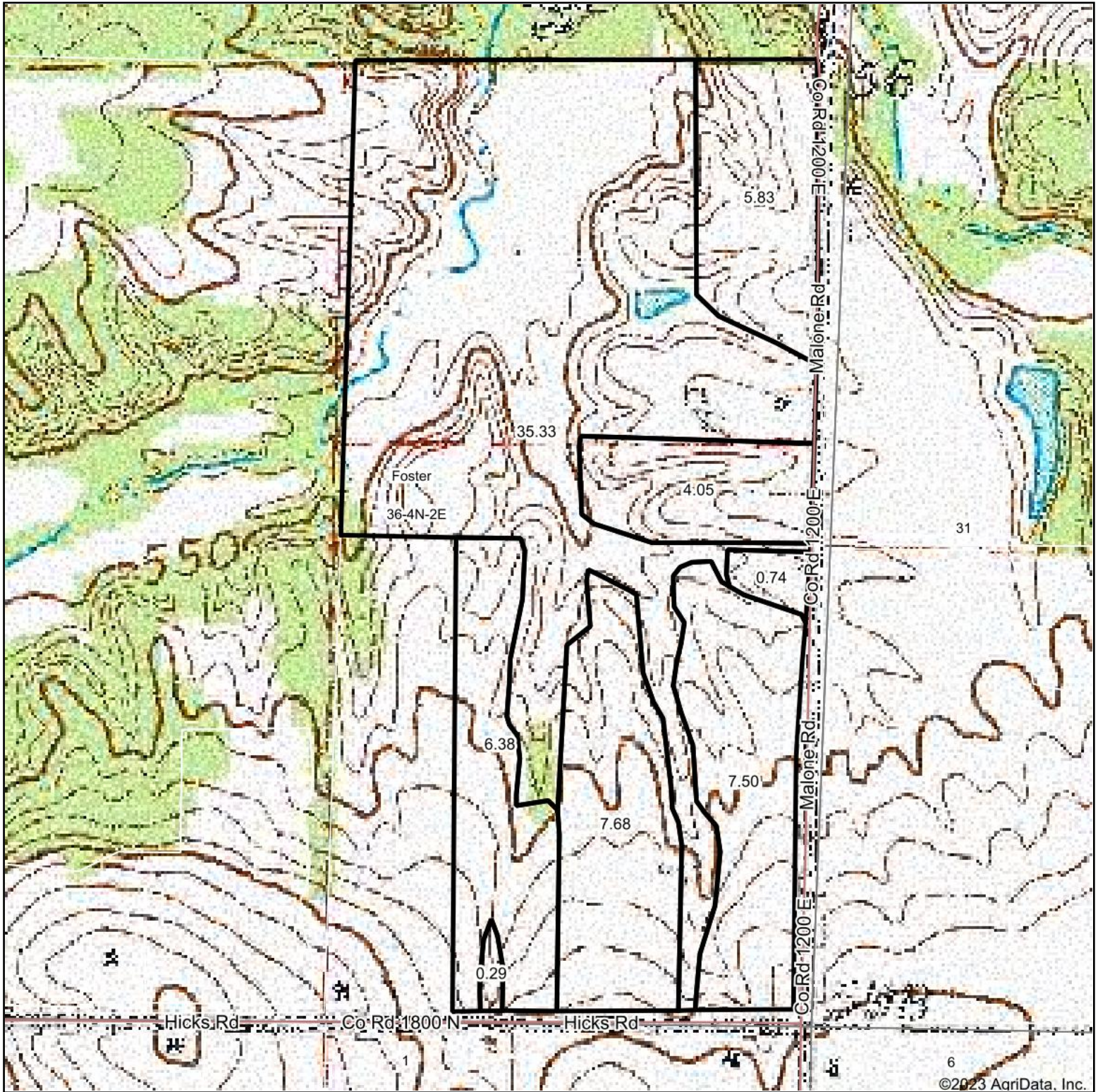
Maps Provided By:



© AgriData, Inc. 2023 www.AgriDataInc.com

Field borders provided by Farm Service Agency as of 5/21/2008.

Topography Map



©2023 AgriData, Inc.

map center: 38° 44' 25.38, -88° 55' 27.68



36-4N-2E
Marion County
Illinois



Maps Provided By:
surety
CUSTOMIZED ONLINE MAPPING
© AgriData, Inc. 2023 www.AgridataInc.com

4/27/2023

Field borders provided by Farm Service Agency as of 5/21/2008.