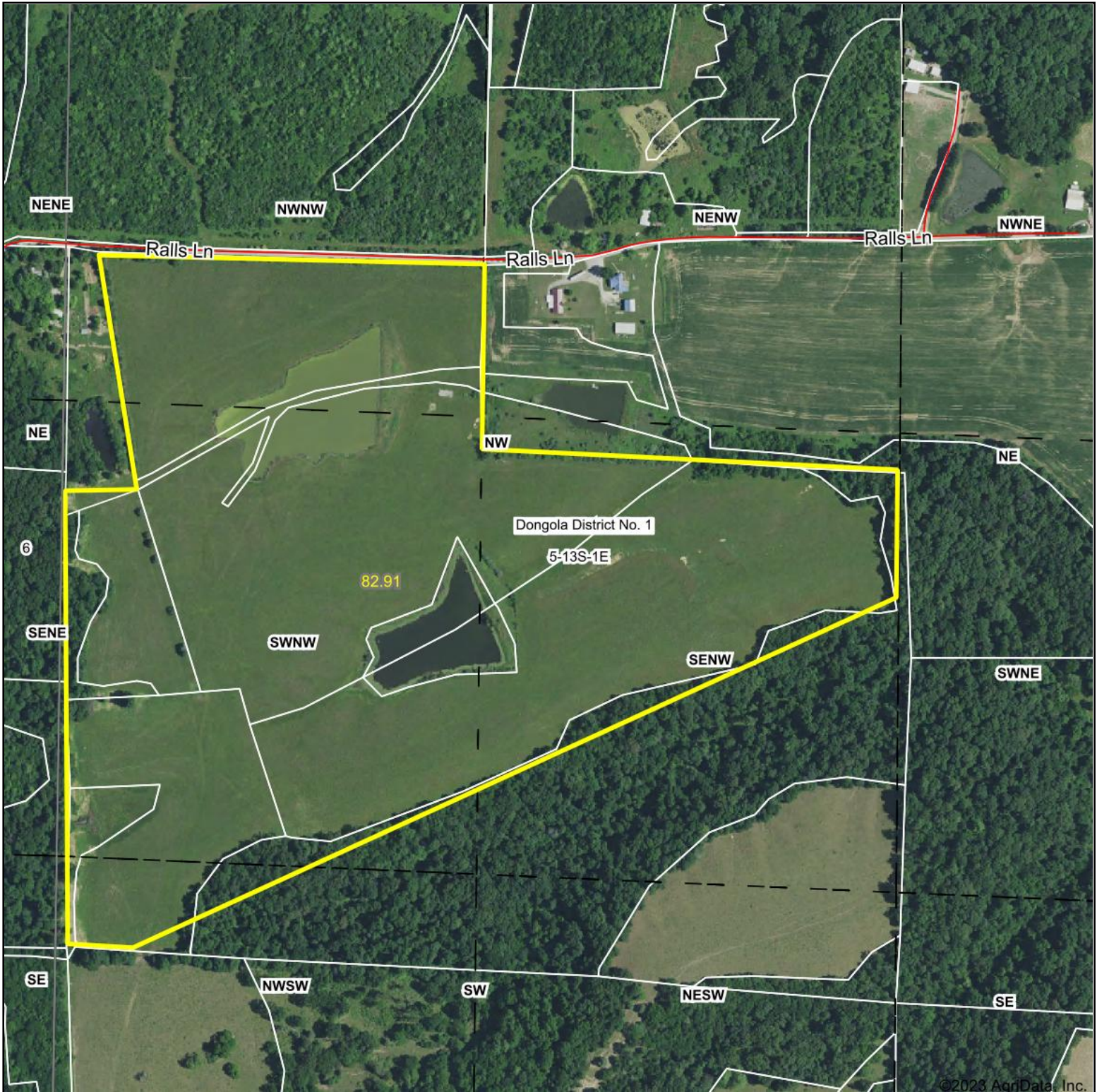


Aerial Map



©2023 AgriData, Inc.

Map Center: 37° 25' 4.74, -89° 7' 51.86



5-13S-1E
Union County
Illinois



5/25/2023



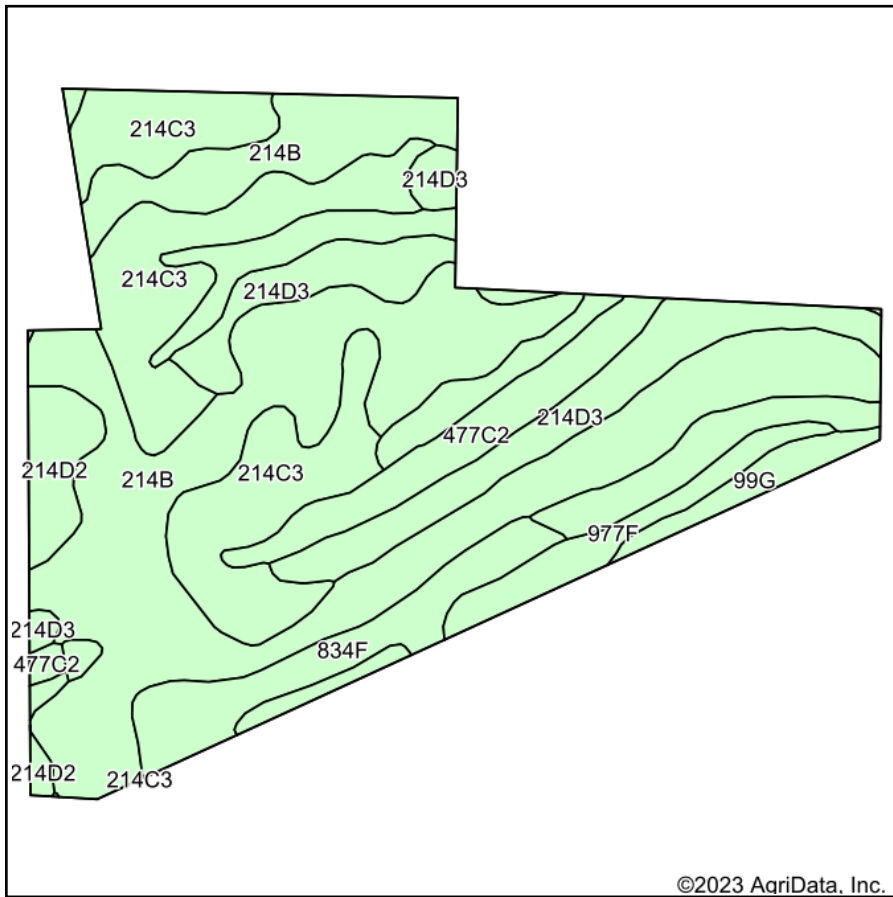
Maps Provided By:



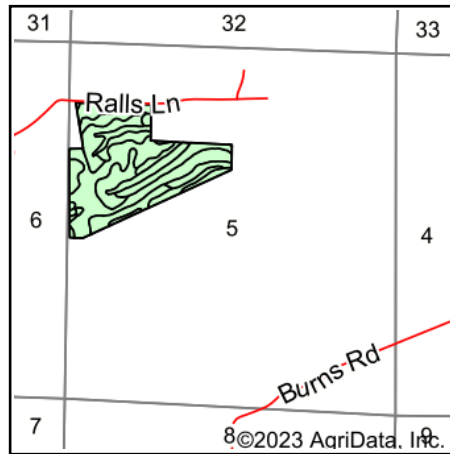
© AgriData, Inc. 2023 www.AgriDataInc.com

Field borders provided by Farm Service Agency as of 5/21/2008.

Soils Map



Soils data provided by USDA and NRCS.



State: **Illinois**
 County: **Union**
 Location: **5-13S-1E**
 Township: **Dongola District No. 1**
 Acres: **82.91**
 Date: **5/25/2023**



Area Symbol: IL181, Soil Area Version: 16

Code	Soil Description	Acres	Percent of field	Corn Bu/A	Soybeans Bu/A	Wheat Bu/A	Crop productivity index for optimum management
**214B	Hosmer silt loam, 2 to 5 percent slopes	32.44	39.1%	**139	**46	**57	**104
**214C3	Hosmer silt loam, 5 to 10 percent slopes, severely eroded	16.53	19.9%	**104	**34	**43	**78
**214D3	Hosmer silt loam, 10 to 18 percent slopes, severely eroded	14.30	17.2%	**97	**32	**40	**72
**477C2	Winfield silt loam, 5 to 10 percent slopes, eroded	6.95	8.4%	**151	**47	**59	**111
**834F	Wellston-Westmore silt loams, 18 to 35 percent slopes	4.89	5.9%	**85	**28	**34	**64
**977F	Wellston-Neotoma complex, 18 to 35 percent slopes	3.33	4.0%	**73	**26	**29	**56
**214D2	Hosmer silt loam, 10 to 18 percent slopes, eroded	2.59	3.1%	**118	**39	**49	**88
99G	Sandstone and Limestone rock land, 35 to 90 percent slopes	1.62	2.0%				
W	Water	0.26	0.3%				
Weighted Average				116.1	38.1	47.4	86.7

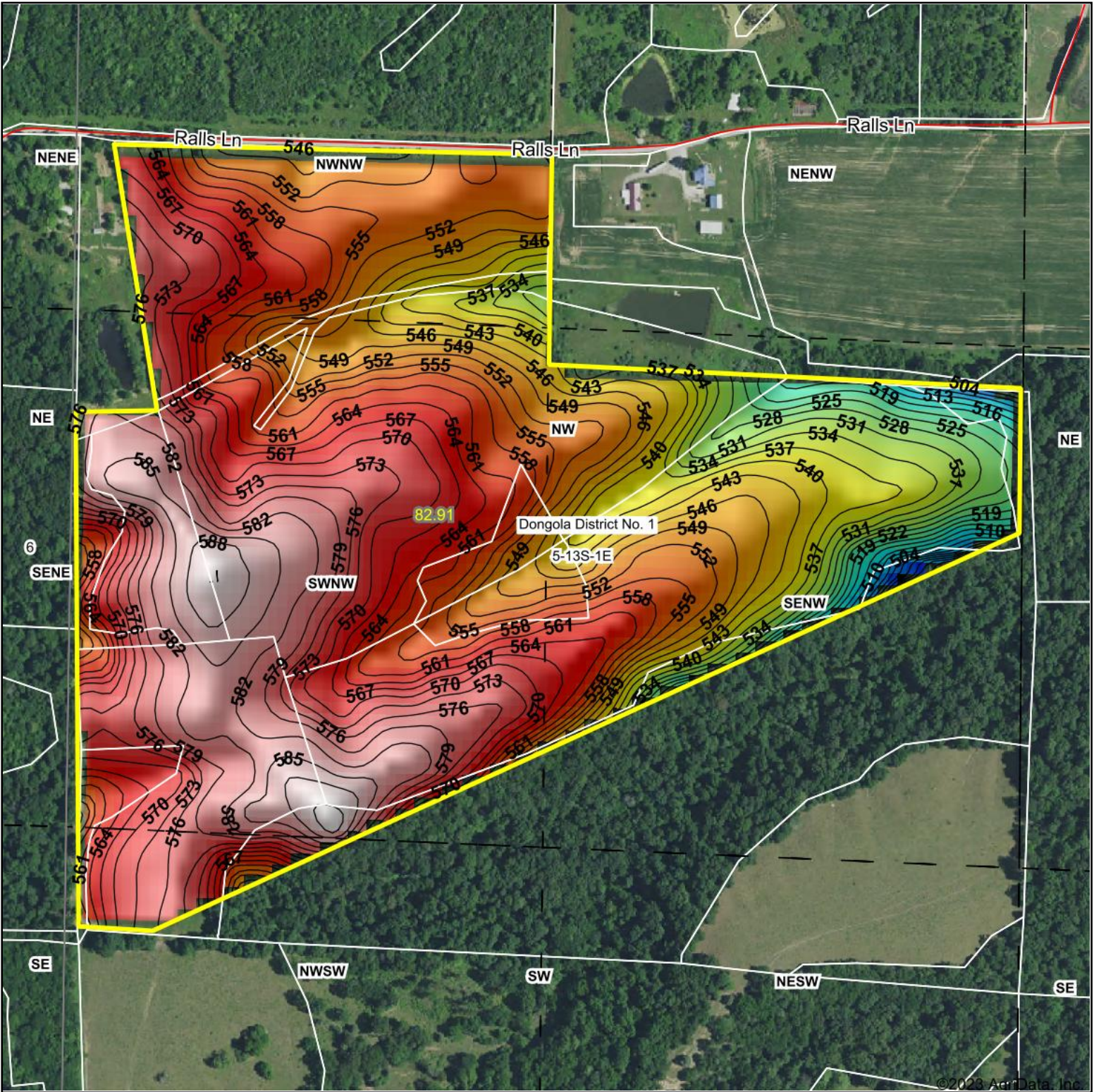
Table: Optimum Crop Productivity Ratings for Illinois Soil by K.R. Olson and J.M. Lang, Office of Research, ACES, University of Illinois at Champaign-Urbana. Version: 1/2/2012 Amended Table S2 B811

Crop yields and productivity indices for optimum management (B811) are maintained at the following NRES web site: <http://soilproductivity.nres.illinois.edu/>

** Indexes adjusted for slope and erosion according to Bulletin 811 Table S3

Soils data provided by USDA and NRCS. Soils data provided by University of Illinois at Champaign-Urbana.

Topography Hillshade



<p>Low Elevation High</p>	<p>Source: USGS 10 meter dem</p> <p>Interval(ft): 3</p> <p>Min: 484.2</p> <p>Max: 592.1</p> <p>Range: 107.9</p> <p>Average: 558.8</p> <p>Standard Deviation: 18.44 ft</p>	<p>0ft 445ft 889ft</p> <p> 5/25/2023 5-13S-1E Union County Illinois map center: 37° 25' 4.74, -89° 7' 51.86 </p>
---------------------------	---	---



Maps Provided By:



© AgriData, Inc. 2023 www.AgriDataInc.com

Field borders provided by Farm Service Agency as of 5/21/2008.

©2023 AgriData, Inc.