

# Aerial Map



©2023 AgriData, Inc.

Map Center: 38° 19' 49.01, -89° 23' 33.41



Maps Provided By:



© AgriData, Inc. 2023 www.AgriDataInc.com

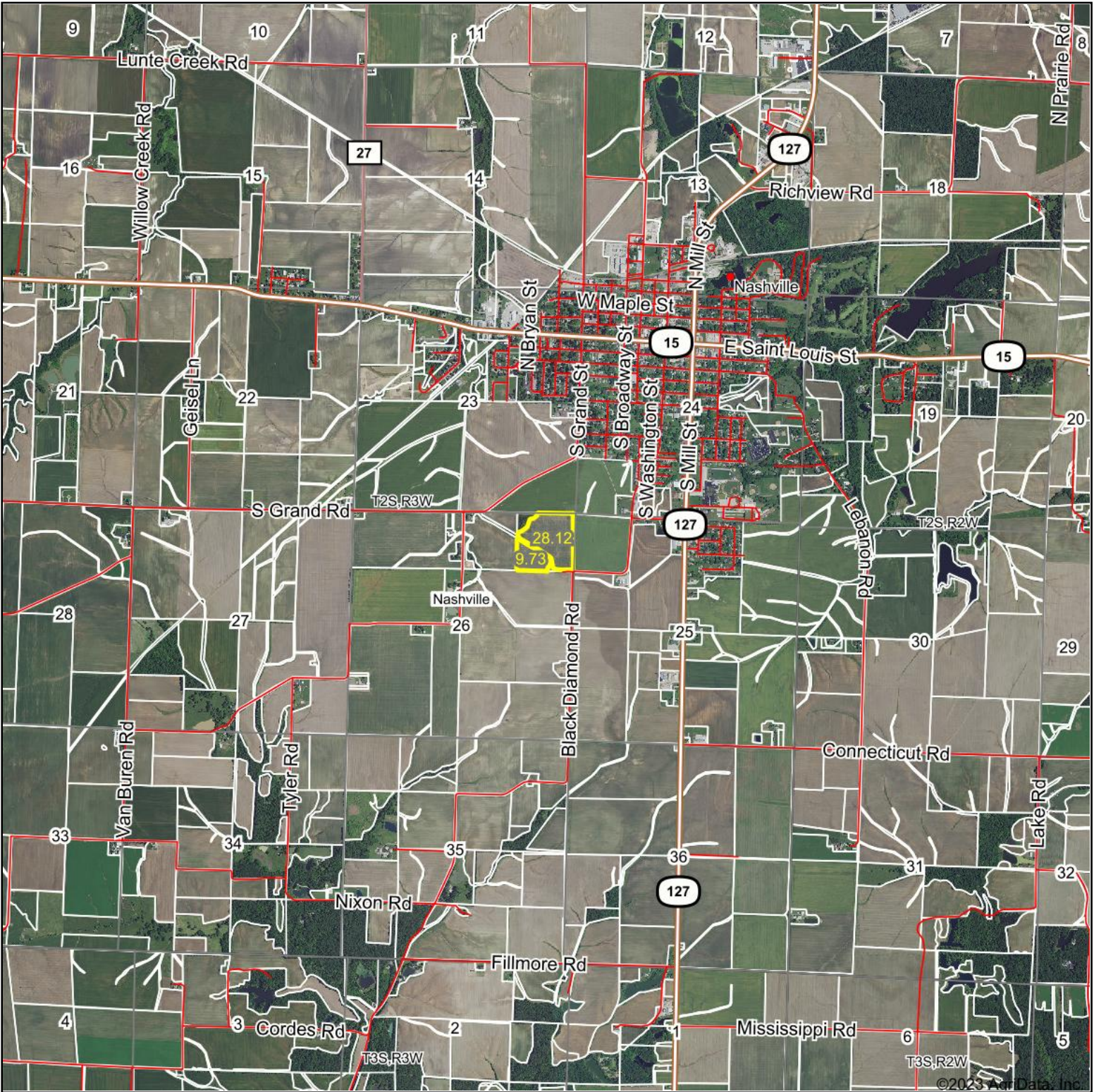
**26-2S-3W**  
**Washington County**  
**Illinois**



3/1/2023

Field borders provided by Farm Service Agency as of 5/21/2008.

# Aerial Map



Map Center: 38° 19' 48.05, -89° 23' 33.01

0ft 3726ft 7451ft



Maps Provided By:



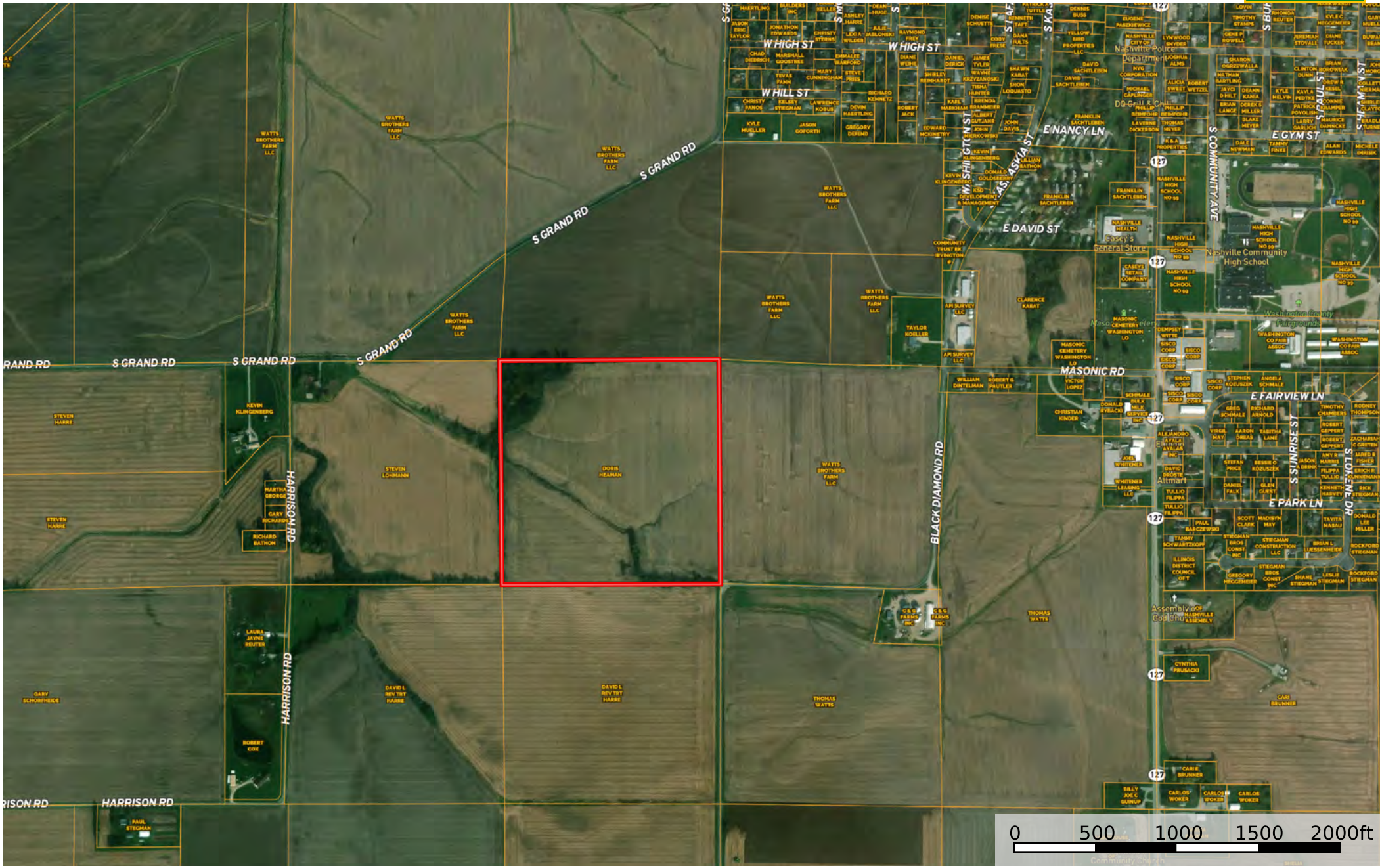
© AgriData, Inc. 2023 www.AgriDataInc.com

**26-2S-3W**  
**Washington County**  
**Illinois**



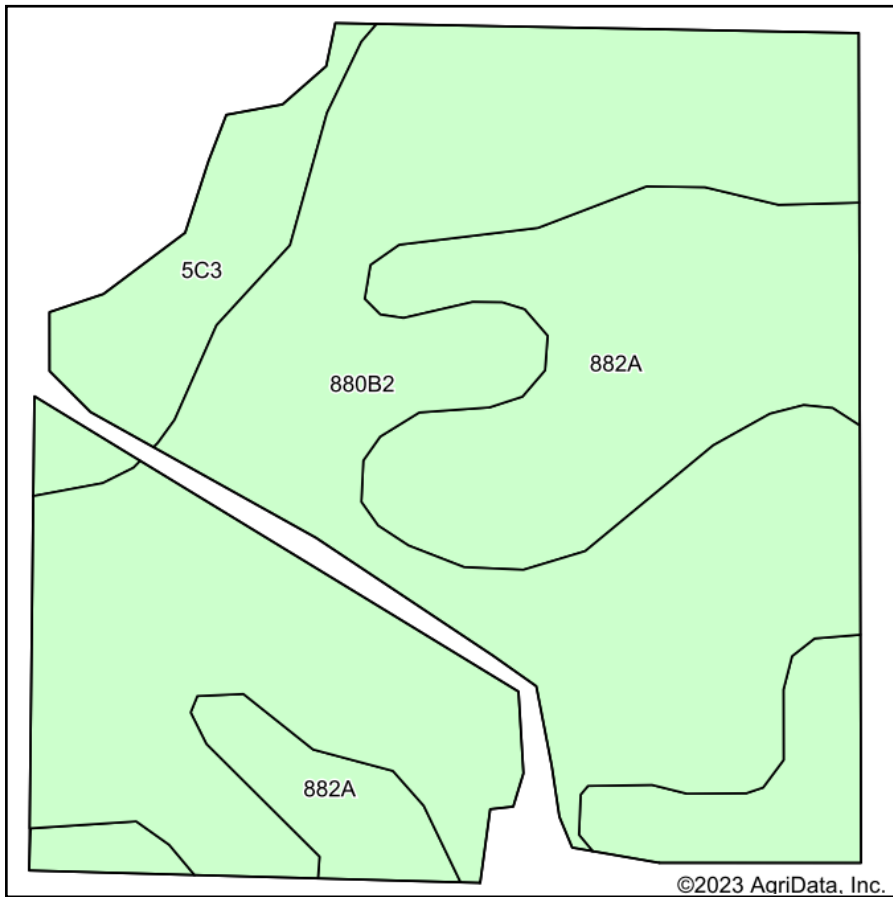
3/1/2023

Field borders provided by Farm Service Agency as of 5/21/2008.

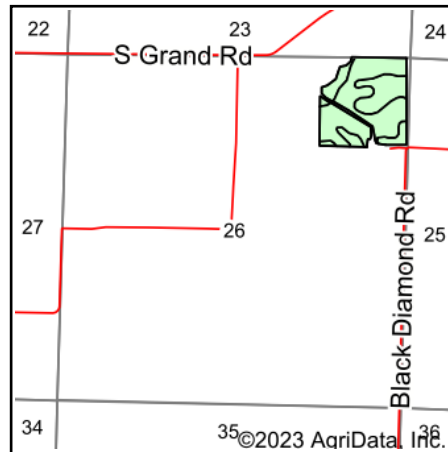


Boundary

# Soils Map



Soils data provided by USDA and NRCS.



State: **Illinois**  
 County: **Washington**  
 Location: **26-2S-3W**  
 Township: **Nashville**  
 Acres: **37.85**  
 Date: **3/1/2023**



Maps Provided By:



Area Symbol: IL189, Soil Area Version: 17

Code	Soil Description	Acres	Percent of field	Corn Bu/A	Soybeans Bu/A	Wheat Bu/A	Grass-legume e hay, T/A	Crop productivity index for optimum management
**880B2	Darmstadt-Coulterville silt loams, 2 to 5 percent slopes, eroded	23.71	62.6%	**129	**43	**47	**3.66	**97
882A	Oconee-Darmstadt-Coulterville silt loams, 0 to 2 percent slopes	11.20	29.6%	148	48	56	4.55	110
**5C3	Blair silty clay loam, 5 to 10 percent slopes, severely eroded	2.94	7.8%	**102	**33	**41	**3.25	**77
<b>Weighted Average</b>				<b>132.5</b>	<b>43.7</b>	<b>49.2</b>	<b>3.89</b>	<b>99.3</b>

**Table: Optimum Crop Productivity Ratings for Illinois Soil by K.R. Olson and J.M. Lang, Office of Research, ACES, University of Illinois at Champaign-Urbana.** Version: 1/2/2012 Amended Table S2 B811

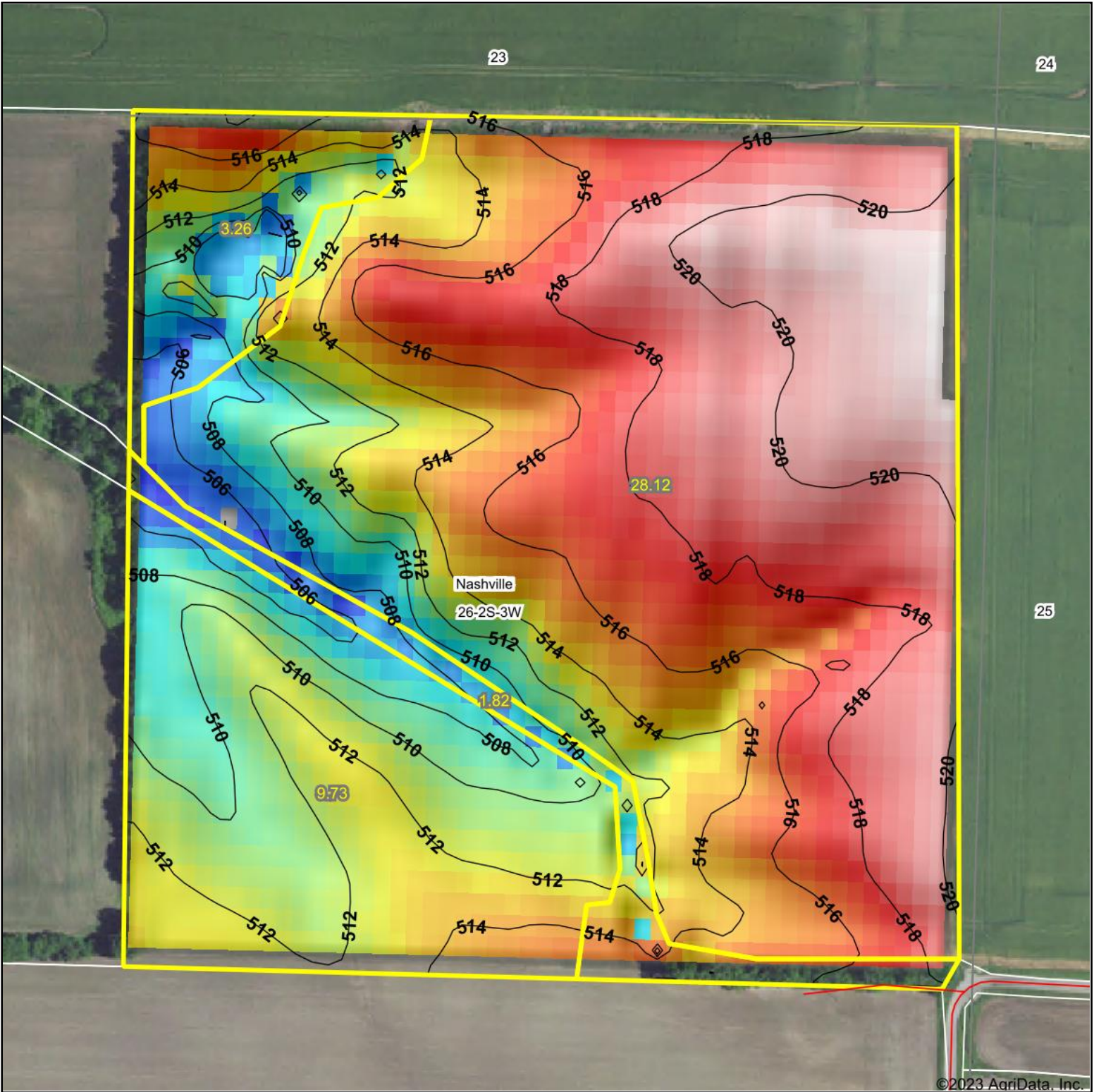
Crop yields and productivity indices for optimum management (B811) are maintained at the following NRES web site: <http://soilproductivity.nres.illinois.edu/>

\*\* Indexes adjusted for slope and erosion according to Bulletin 811 Table S3

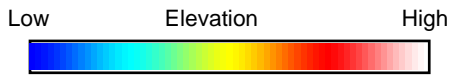
e Soils in the well drained group were not rated for grass-legume and are shown with a zero "0".

Soils data provided by USDA and NRCS. Soils data provided by University of Illinois at Champaign-Urbana.

# Topography Hillshade



©2023 AgriData, Inc.



Source: USGS 10 meter dem  
 Interval(ft): 2  
 Min: 503.8  
 Max: 522.0  
 Range: 18.2  
 Average: 514.5  
 Standard Deviation: 4.2 ft



3/1/2023

**26-2S-3W**  
**Washington County**  
**Illinois**

map center: 38° 19' 48.08, -89° 23' 33.09



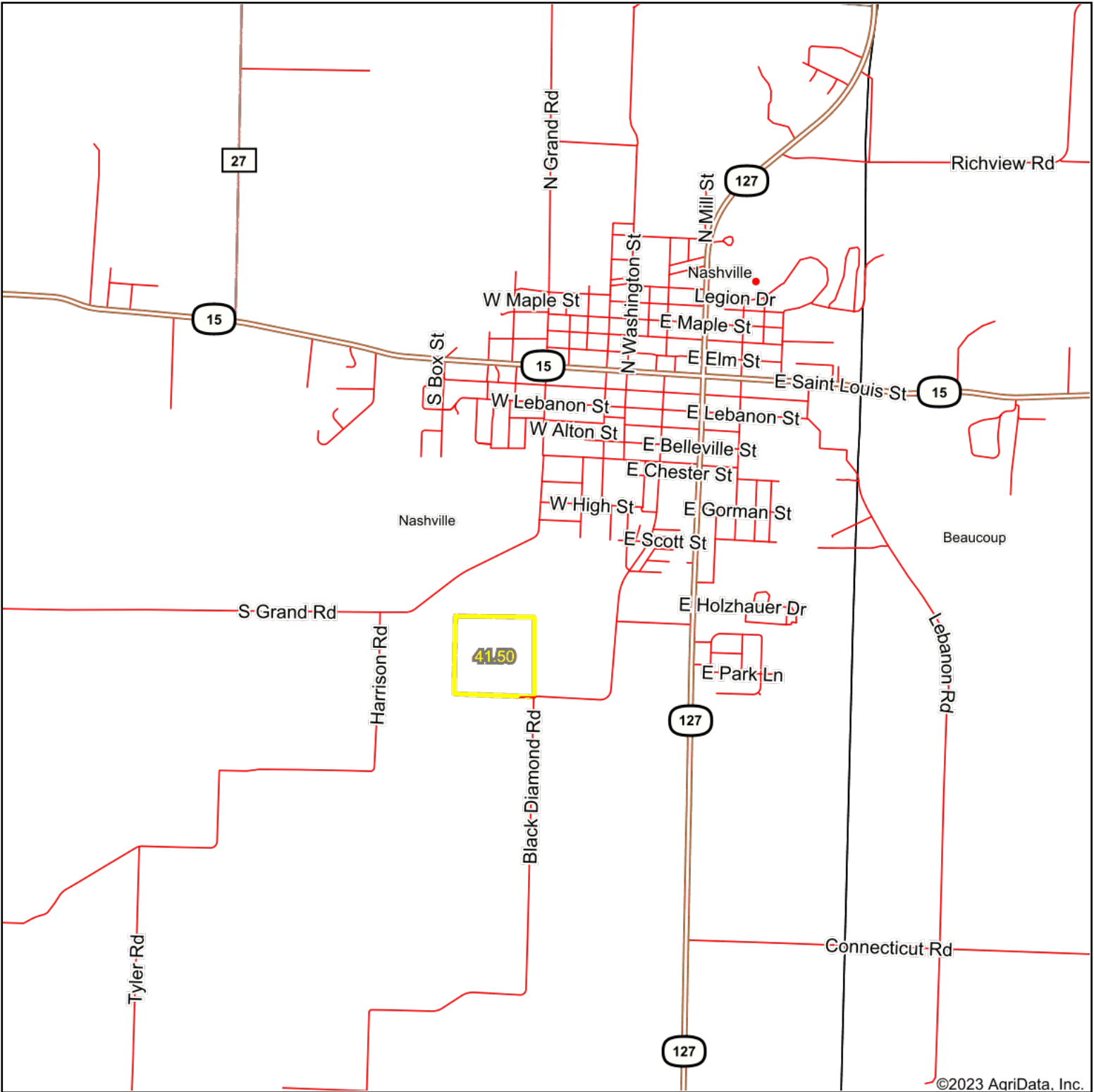
Maps Provided By:



© AgriData, Inc. 2023 www.AgriDataInc.com

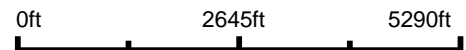
Field borders provided by Farm Service Agency as of 5/21/2008.

# Overview Map



©2023 AgriData, Inc.

map center: 38° 20' 7.63, -89° 23' 23.02



Maps Provided By:



© AgriData, Inc. 2023 www.AgriDataInc.com



3/1/2023