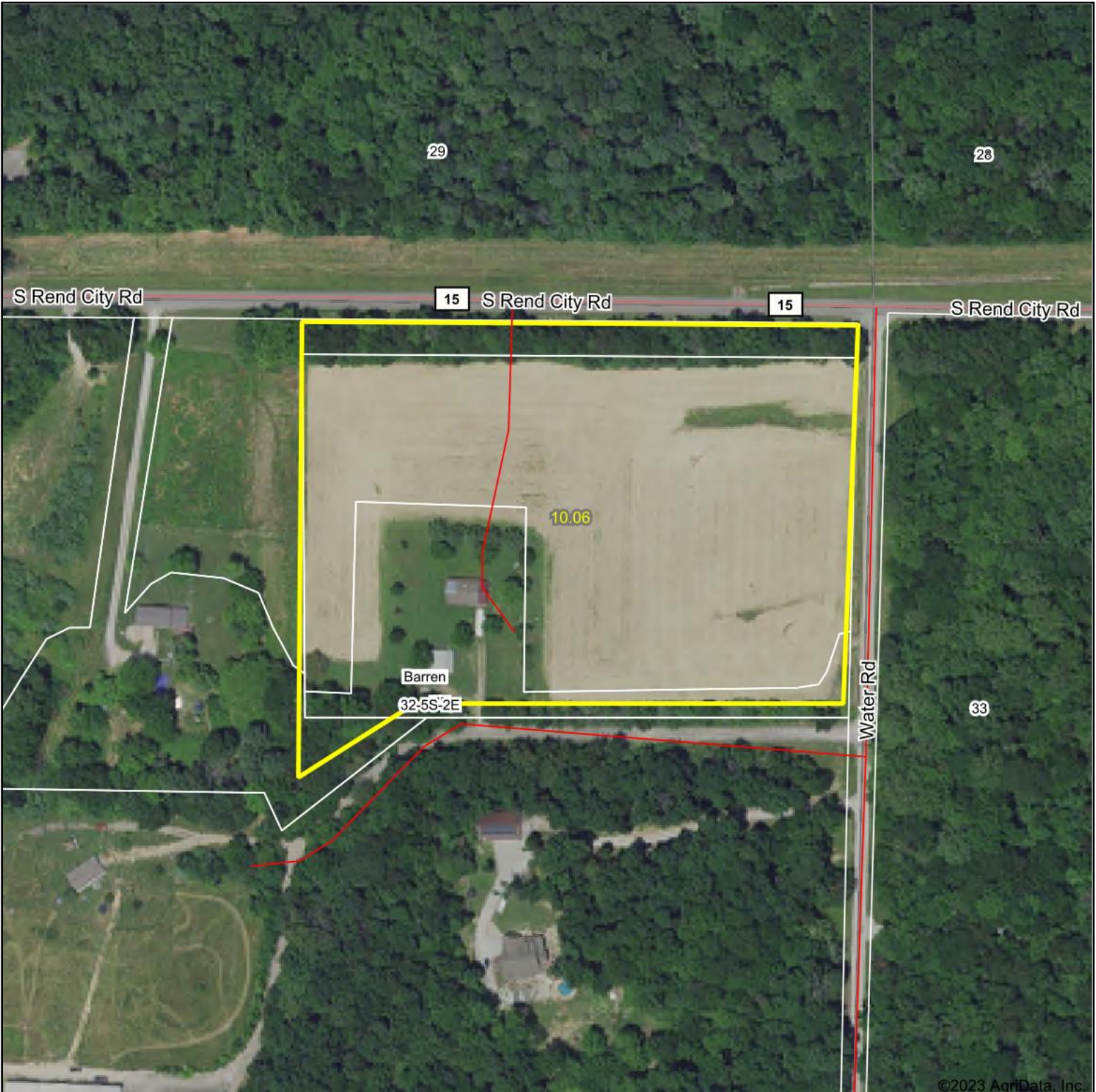


Aerial Map



©2023 AgriData, Inc.

Map Center: 38° 3' 7.33, -89° 0' 15.61



32-5S-2E
Franklin County
Illinois



3/17/2023



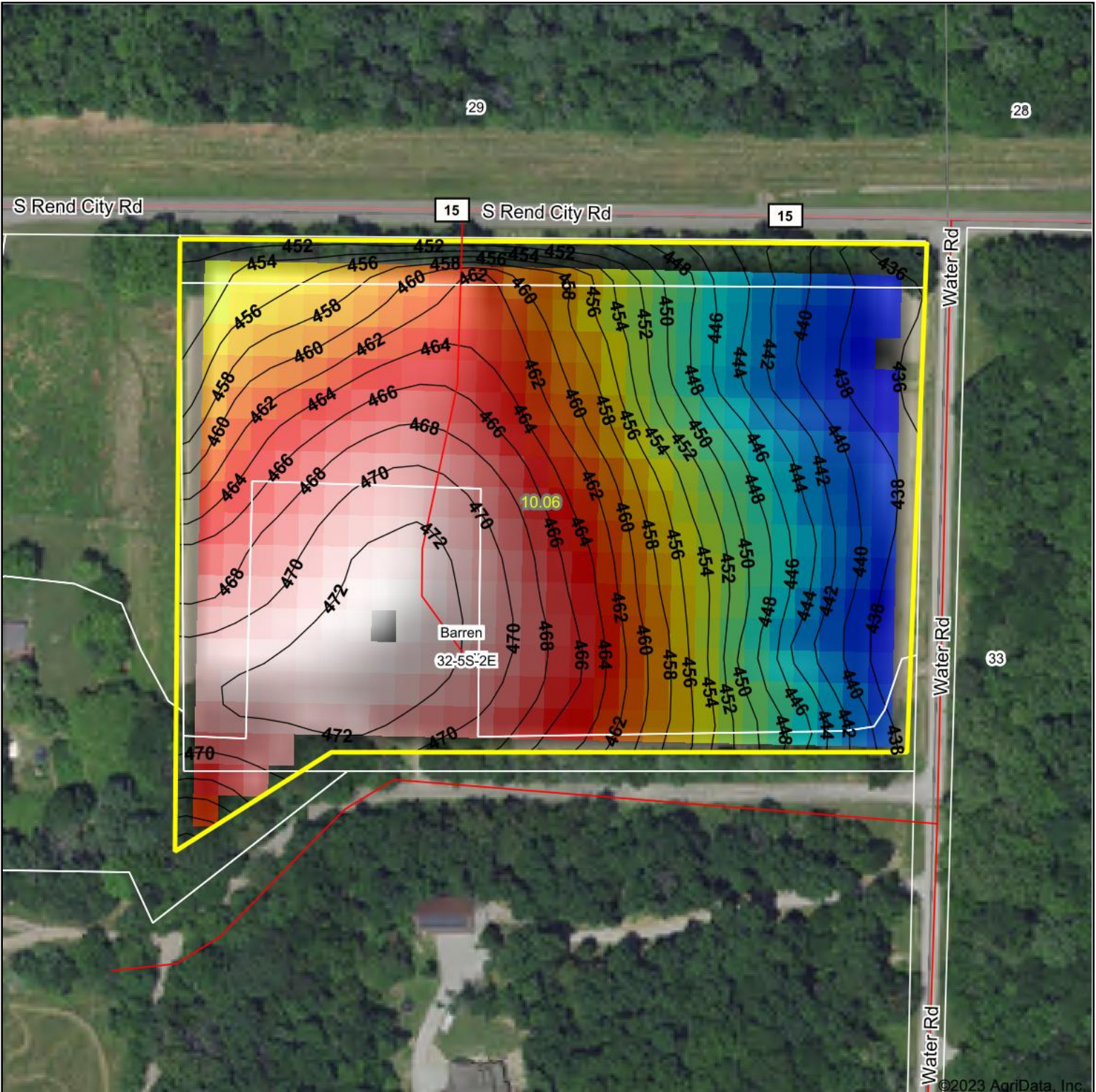
Maps Provided By:



© AgriData, Inc. 2023 www.AgriDataInc.com

Field borders provided by Farm Service Agency as of 5/21/2008.

Topography Hillshade



<p>Low Elevation High</p>	<p>Source: USGS 10 meter dem</p> <p>Interval(ft): 2</p> <p>Min: 436.0</p> <p>Max: 473.5</p> <p>Range: 37.5</p> <p>Average: 458.3</p> <p>Standard Deviation: 11.19 ft</p>	<p>0ft 166ft 332ft</p> <p>32-5S-2E Franklin County Illinois</p> <p>3/17/2023</p> <p>map center:38° 3' 7.33, -89° 0' 15.61</p>
---------------------------	--	---



Maps Provided By:

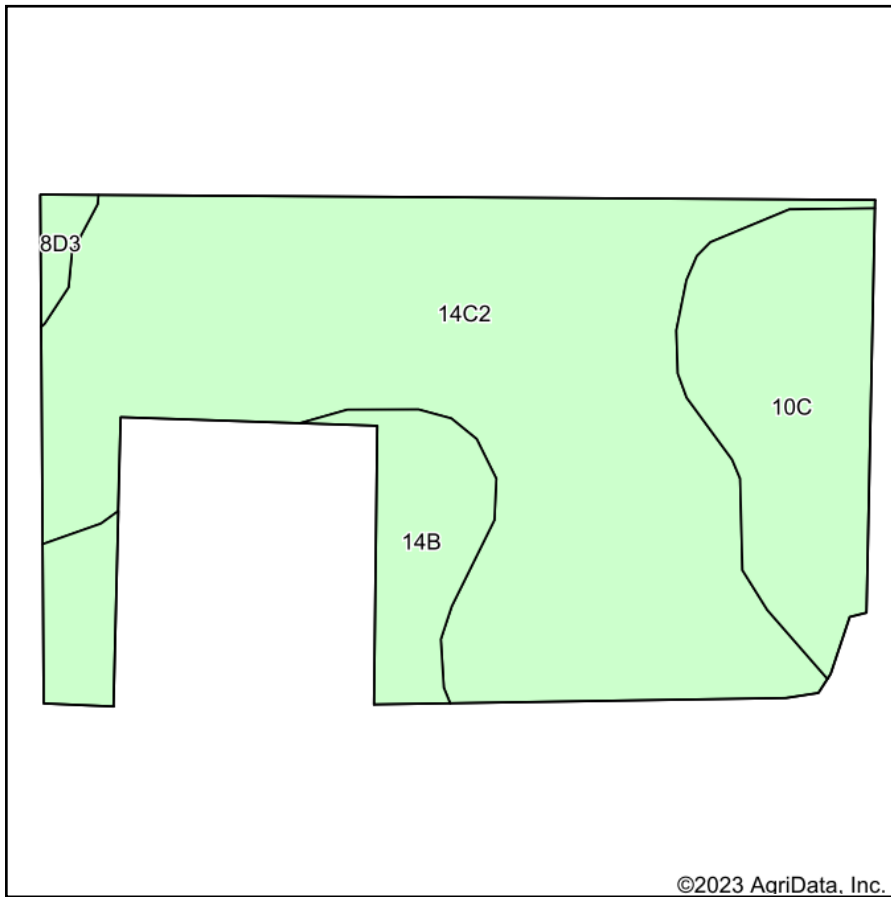


© AgriData, Inc. 2023 www.AgriDataInc.com

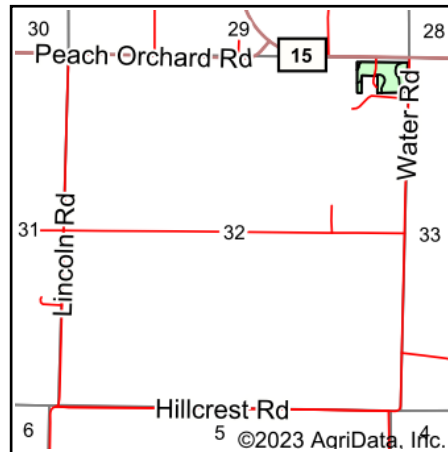
Field borders provided by Farm Service Agency as of 5/21/2008.

©2023 AgriData, Inc.

Soils Map



Soils data provided by USDA and NRCS.



State: **Illinois**
 County: **Franklin**
 Location: **32-5S-2E**
 Township: **Barren**
 Acres: **7.09**
 Date: **3/17/2023**



Area Symbol: IL055, Soil Area Version: 16

Code	Soil Description	Acres	Percent of field	Corn Bu/A	Soybeans Bu/A	Wheat Bu/A	Crop productivity index for optimum management
**14C2	Ava silt loam, 5 to 10 percent slopes, eroded	4.81	67.8%	**122	**40	**50	**90
**10C	Plumfield silty clay loam, 5 to 10 percent slopes	1.35	19.0%	**103	**34	**39	**78
**14B	Ava silt loam, 2 to 5 percent slopes	0.84	11.8%	**134	**44	**54	**99
**8D3	Hickory clay loam, 10 to 18 percent slopes, severely eroded	0.09	1.3%	**98	**33	**40	**75
Weighted Average				119.5	39.2	48.3	88.6

Table: Optimum Crop Productivity Ratings for Illinois Soil by K.R. Olson and J.M. Lang, Office of Research, ACES, University of Illinois at Champaign-Urbana. Version: 1/2/2012 Amended Table S2 B811

Crop yields and productivity indices for optimum management (B811) are maintained at the following NRES web site: <http://soilproductivity.nres.illinois.edu/>

** Indexes adjusted for slope and erosion according to Bulletin 811 Table S3

Soils data provided by USDA and NRCS. Soils data provided by University of Illinois at Champaign-Urbana.