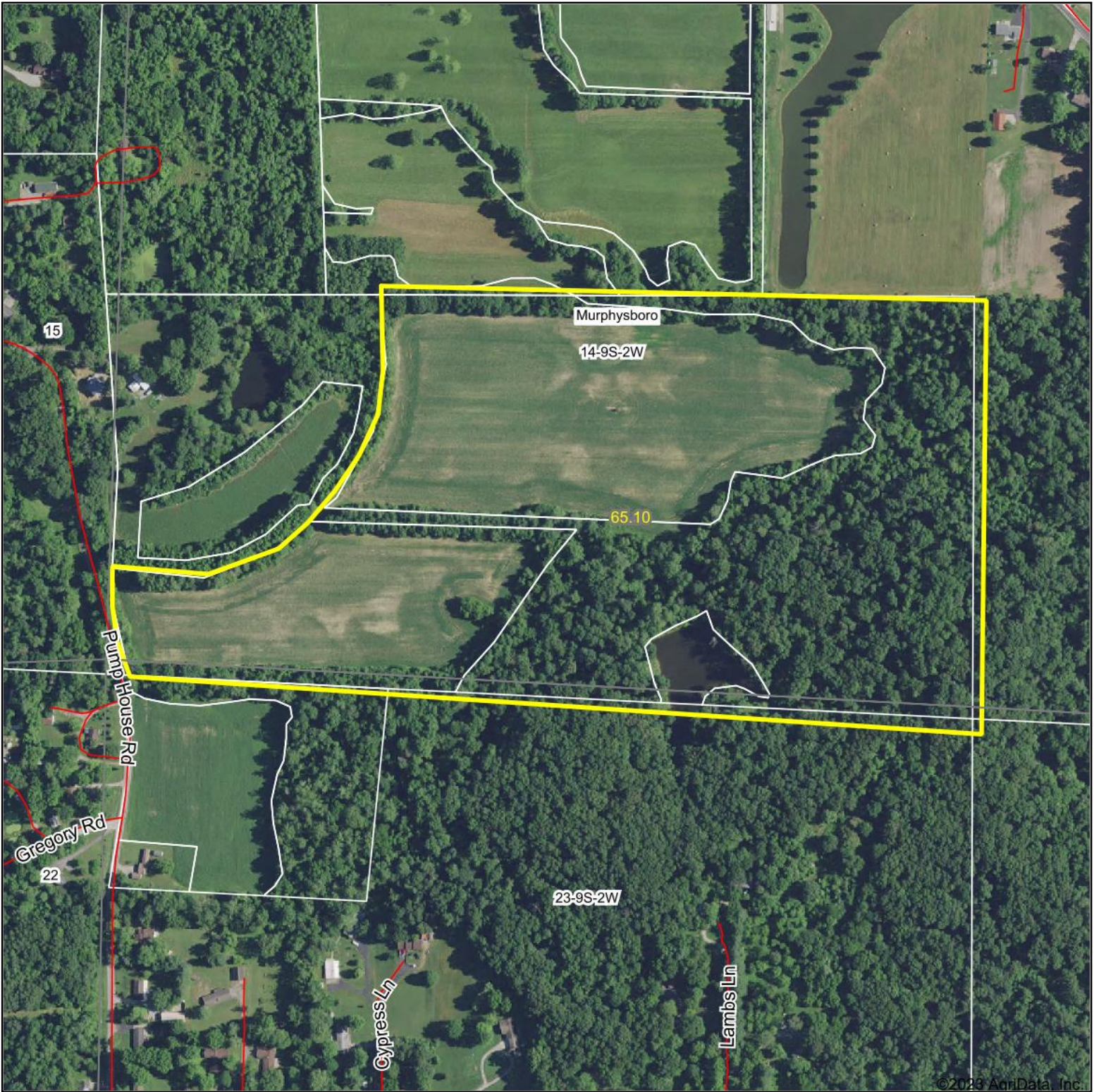


Aerial Map



©2023 AgriData, Inc.

Map Center: 37° 44' 1.21, -89° 18' 2.12



14-9S-2W
Jackson County
Illinois

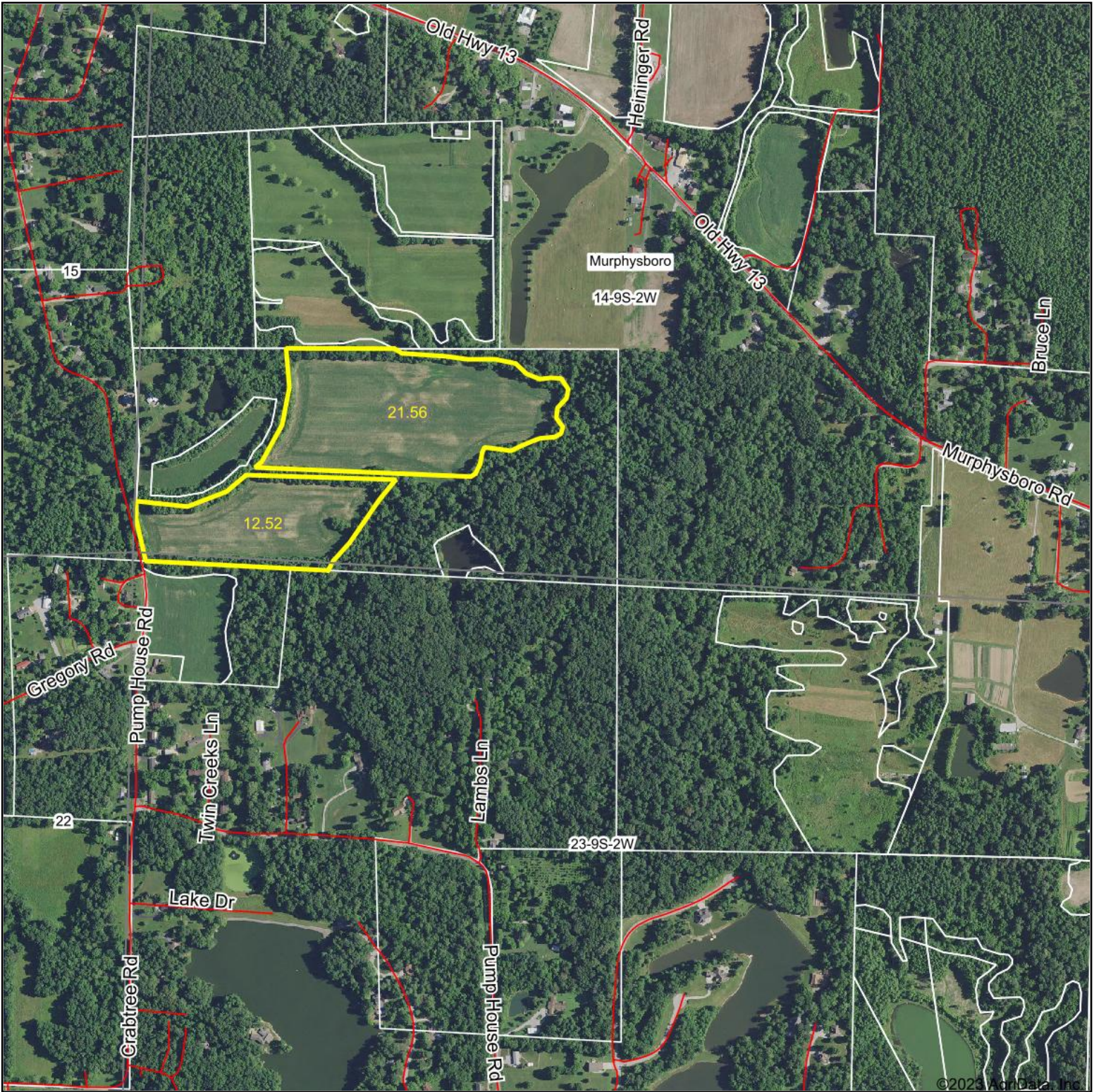


1/11/2023

Maps Provided By:
 surety
CUSTOMIZED ONLINE MAPPING
© AgriData, Inc. 2021 www.AgriDataInc.com

Field borders provided by Farm Service Agency as of 5/21/2008.

Aerial Map



Map Center: 37° 43' 58.26, -89° 17' 50.43



14-9S-2W
Jackson County
Illinois



1/11/2023



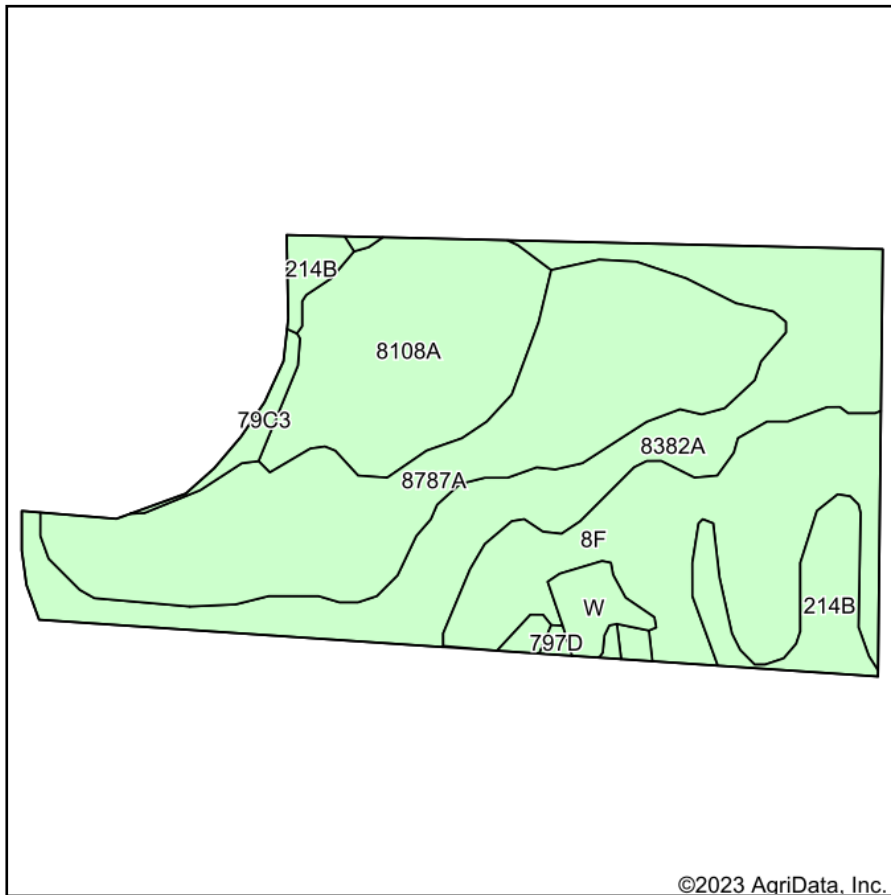
Maps Provided By:



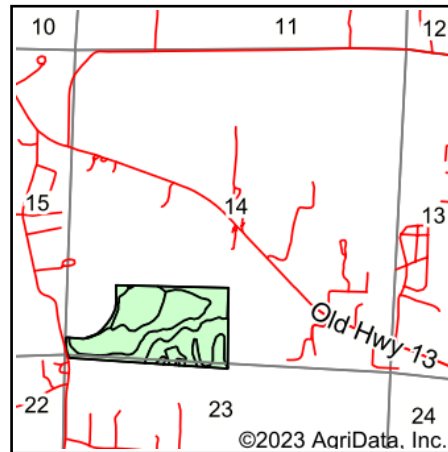
© AgriData, Inc. 2021 www.AgriDataInc.com

Field borders provided by Farm Service Agency as of 5/21/2008.

Soils Map



Soils data provided by USDA and NRCS.



State: **Illinois**
 County: **Jackson**
 Location: **14-9S-2W**
 Township: **Murphysboro**
 Acres: **65.1**
 Date: **1/11/2023**



Maps Provided By:



© AgriData, Inc. 2021

www.AgriDataInc.com



Area Symbol: IL077, Soil Area Version: 22

Code	Soil Description	Acres	Percent of field	Corn Bu/A	Soybeans Bu/A	Wheat Bu/A	Grass-legume e hay, T/A	Crop productivity index for optimum management
8787A	Banlic silt loam, 0 to 2 percent slopes, occasionally flooded	19.30	29.6%	142	47	56	4.64	106
8382A	Belknap silt loam, 0 to 2 percent slopes, occasionally flooded	15.00	23.0%	156	52	63	4.89	117
**8F	Hickory silt loam, 18 to 35 percent slopes	12.89	19.8%	**86	**29	**35	0.00	**65
8108A	Bonnie silt loam, 0 to 2 percent slopes, occasionally flooded	10.94	16.8%	149	49	59	4.64	111
**214B	Hosmer silt loam, 2 to 5 percent slopes	4.63	7.1%	**139	**46	**57	0.00	**104
W	Water	1.29	2.0%					
**79C3	Menfro silt loam, 5 to 10 percent slopes, severely eroded	0.78	1.2%	**142	**44	**54	0.00	**103
**797D	Hickory-Homen silt loams, 10 to 18 percent slopes	0.27	0.4%	**123	**41	**48	0.00	**92
Weighted Average				132.2	43.9	52.9	3.28	98.9

Table: Optimum Crop Productivity Ratings for Illinois Soil by K.R. Olson and J.M. Lang, Office of Research, ACES, University of Illinois at Champaign-Urbana. Version: 1/2/2012 Amended Table S2 B811

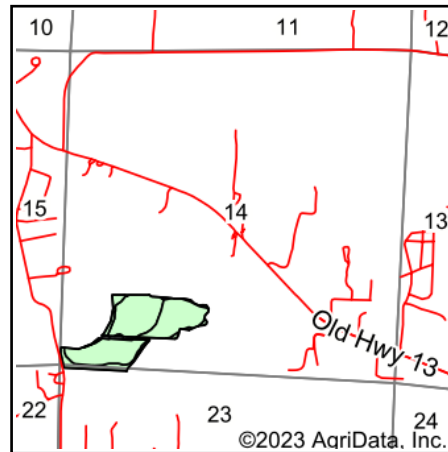
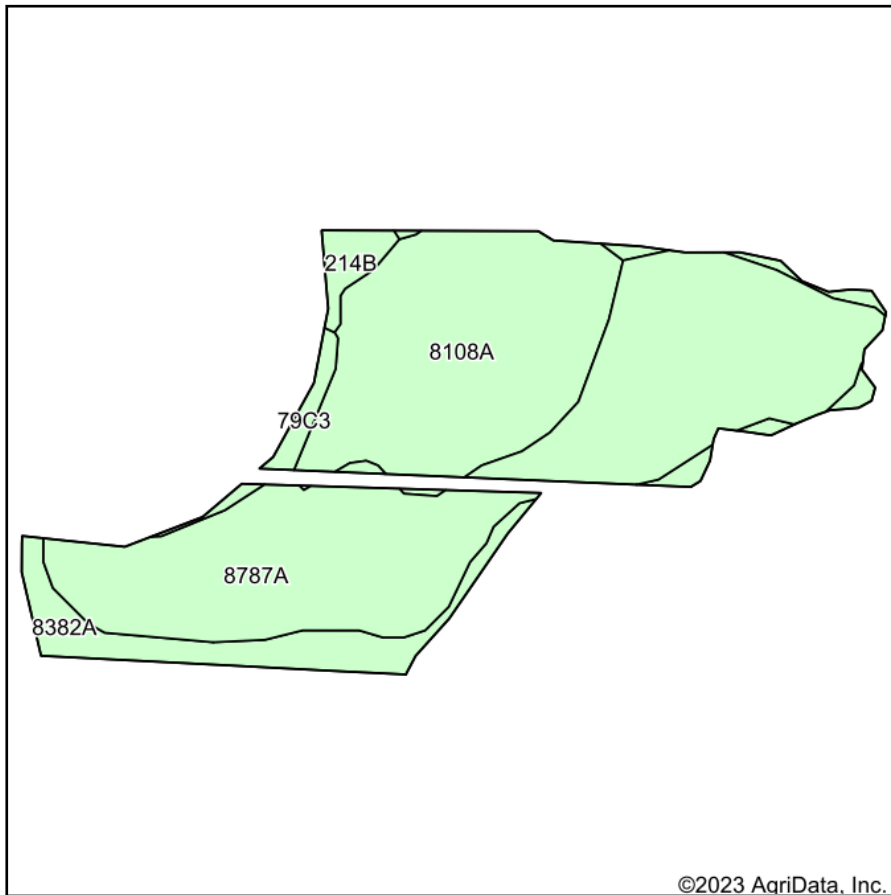
Crop yields and productivity indices for optimum management (B811) are maintained at the following NRES web site: <http://soilproductivity.nres.illinois.edu/>

** Indexes adjusted for slope and erosion according to Bulletin 811 Table S3

e Soils in the well drained group were not rated for grass-legume and are shown with a zero "0".

Soils data provided by USDA and NRCS. Soils data provided by University of Illinois at Champaign-Urbana.

Soils Map



State: **Illinois**
 County: **Jackson**
 Location: **14-9S-2W**
 Township: **Murphysboro**
 Acres: **34.08**
 Date: **1/11/2023**



Soils data provided by USDA and NRCS.

Area Symbol: IL077, Soil Area Version: 22

Code	Soil Description	Acres	Percent of field	Corn Bu/A	Soybeans Bu/A	Wheat Bu/A	Grass-legume e hay, T/A	Crop productivity index for optimum management
8787A	Banlic silt loam, 0 to 2 percent slopes, occasionally flooded	18.59	54.5%	142	47	56	4.64	106
8108A	Bonnie silt loam, 0 to 2 percent slopes, occasionally flooded	10.46	30.7%	149	49	59	4.64	111
8382A	Belknap silt loam, 0 to 2 percent slopes, occasionally flooded	3.73	10.9%	156	52	63	4.89	117
**214B	Hosmer silt loam, 2 to 5 percent slopes	0.67	2.0%	**139	**46	**57	0.00	**104
**79C3	Menfro silt loam, 5 to 10 percent slopes, severely eroded	0.63	1.8%	**142	**44	**54	0.00	**103
Weighted Average				145.6	48.1	57.7	4.49	108.6

Table: Optimum Crop Productivity Ratings for Illinois Soil by K.R. Olson and J.M. Lang, Office of Research, ACES, University of Illinois at Champaign-Urbana. Version: 1/2/2012 Amended Table S2 B811

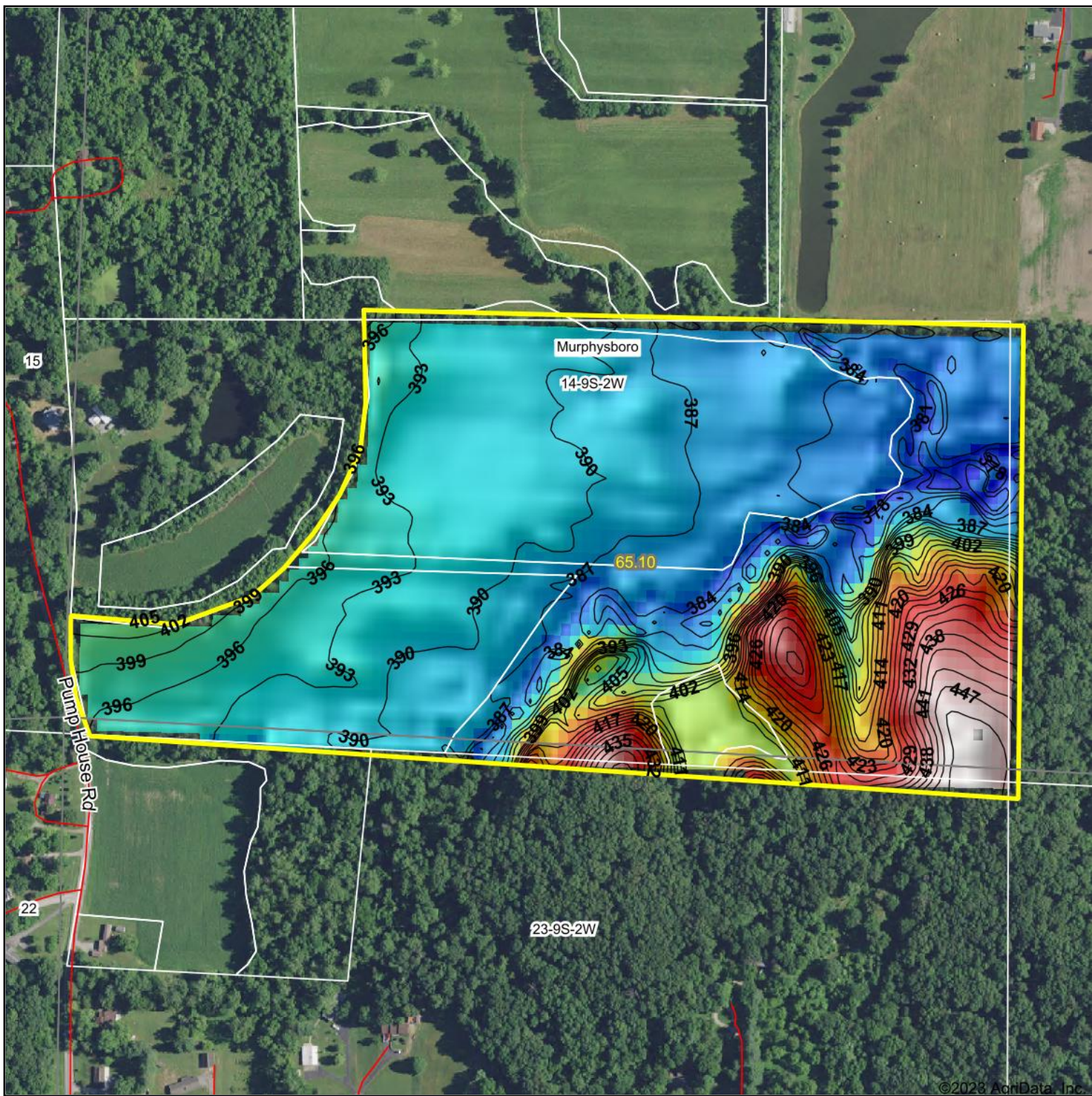
Crop yields and productivity indices for optimum management (B811) are maintained at the following NRES web site: <http://soilproductivity.nres.illinois.edu/>

** Indexes adjusted for slope and erosion according to Bulletin 811 Table S3

e Soils in the well drained group were not rated for grass-legume and are shown with a zero "0".

Soils data provided by USDA and NRCS. Soils data provided by University of Illinois at Champaign-Urbana.

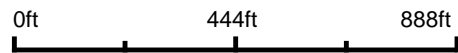
Topography Hillshade



©2023 AgriData, Inc.



Source: USGS 10 meter dem
 Interval(ft): 3
 Min: 372.1
 Max: 452.1
 Range: 80.0
 Average: 397.7
 Standard Deviation: 18.14 ft



1/11/2023

14-9S-2W
Jackson County
Illinois

map center: 37° 44' 1.21, -89° 18' 2.12



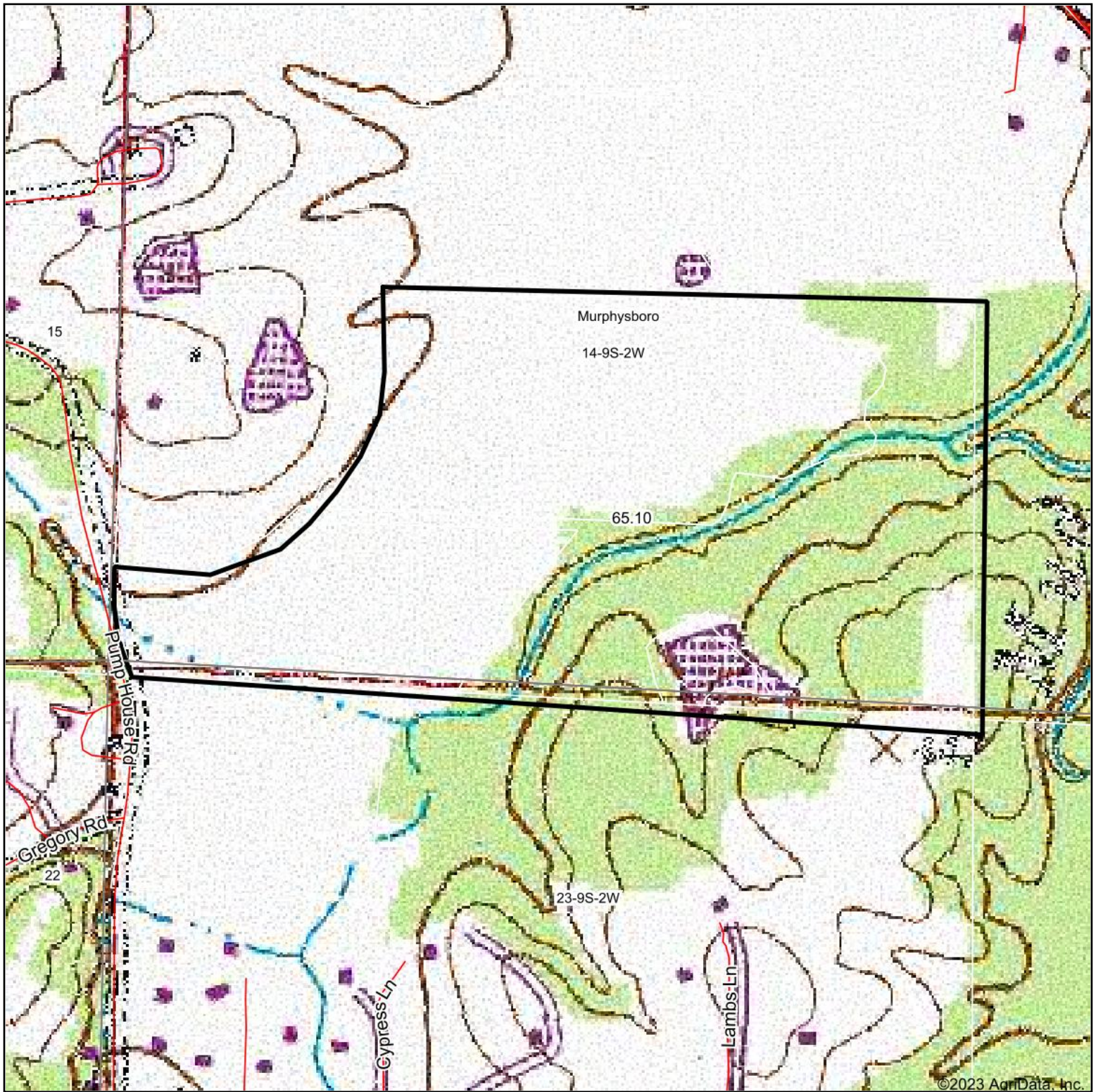
Maps Provided By:



© AgriData, Inc. 2021 www.AgriDataInc.com

Field borders provided by Farm Service Agency as of 5/21/2008.

Topography Map



map center: 37° 44' 1.21, -89° 18' 2.12



14-9S-2W
Jackson County
Illinois



1/11/2023



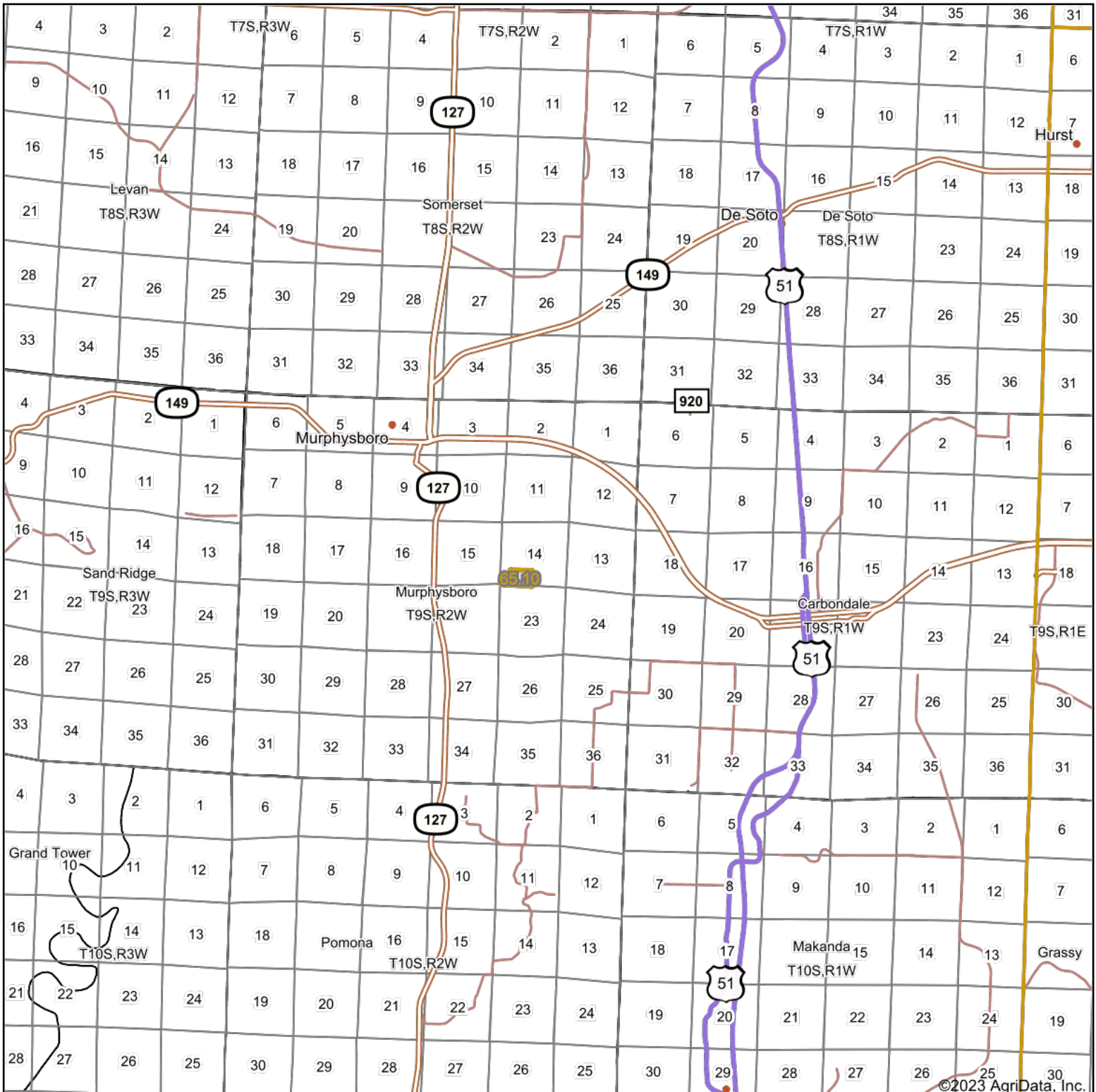
Maps Provided By:



© AgriData, Inc. 2021

www.AgridataInc.com

Overview Map



©2023 AgriData, Inc.

map center: 37° 44' 27.07, -89° 17' 29.75

0mi 2.4mi 4.9mi



Maps Provided By



© AgriData, Inc. 2021 www.AgrIDataInc.com



1/11/2023