

Aerial Map



Map Center: 39° 0' 20.53, -89° 2' 26.39



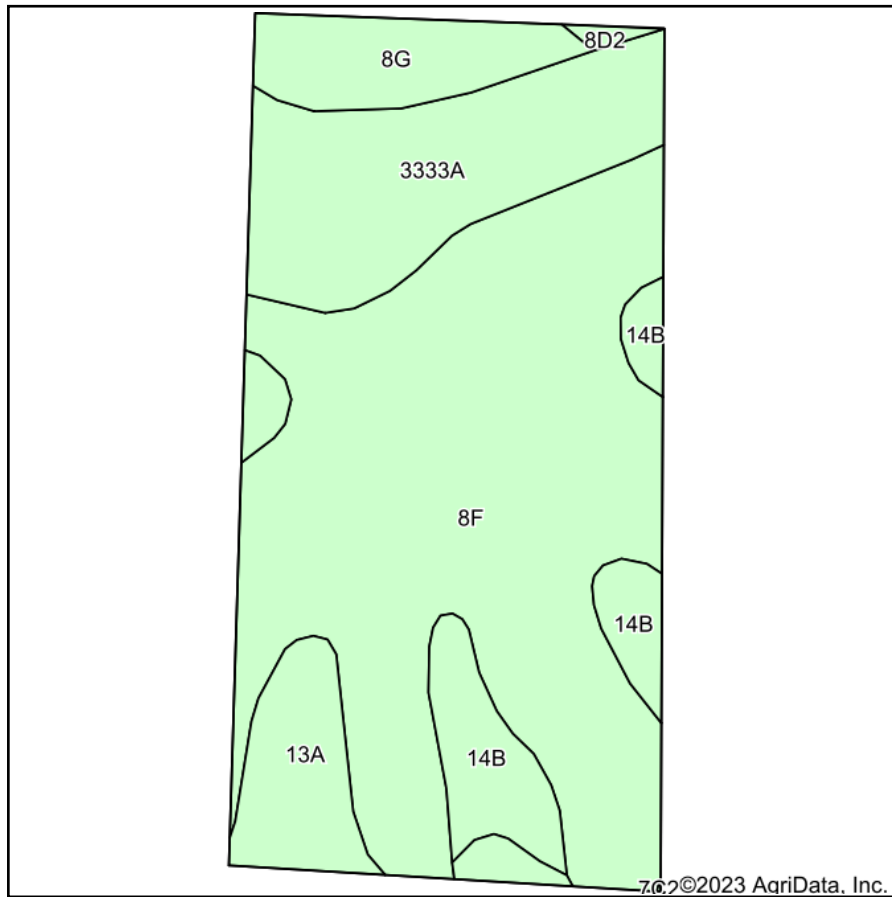
Maps Provided By:
 **surety**
CUSTOMIZED ONLINE MAPPING
© AgriData, Inc. 2021 www.AgriDataInc.com

36-7N-1E
Fayette County
Illinois

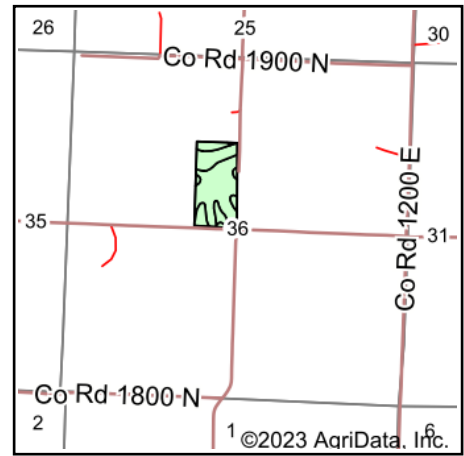


Field borders provided by Farm Service Agency as of 5/21/2008.

Soils Map



Soils data provided by USDA and NRCS.



State: **Illinois**
 County: **Fayette**
 Location: **36-7N-1E**
 Township: **Sefton**
 Acres: **19.63**
 Date: **2/19/2023**



Maps Provided By:



Area Symbol: IL051, Soil Area Version: 18

Code	Soil Description	Acres	Percent of field	Corn Bu/A	Soybeans Bu/A	Wheat Bu/A	Grass-legume e hay, T/A	Crop productivity index for optimum management
**8F	Hickory silt loam, 18 to 35 percent slopes	11.49	58.5%	**86	**29	**35	0.00	**65
3333A	Wakeland silt loam, 0 to 2 percent slopes, frequently flooded	3.51	17.9%	174	56	68	5.14	128
13A	Bluford silt loam, 0 to 2 percent slopes	1.64	8.4%	136	44	55	3.39	101
**14B	Ava silt loam, 2 to 5 percent slopes	1.59	8.1%	**134	**44	**54	0.00	**99
**8G	Hickory silt loam, 35 to 60 percent slopes	1.33	6.8%	**58	**20	**24	0.00	**44
**8D2	Hickory silt loam, 10 to 18 percent slopes, eroded	0.07	0.4%	**108	**36	**44	0.00	**82
Weighted Average				108	35.7	43.4	1.20	80.7

Table: Optimum Crop Productivity Ratings for Illinois Soil by K.R. Olson and J.M. Lang, Office of Research, ACES, University of Illinois at Champaign-Urbana. Version: 1/2/2012 Amended Table S2 B811

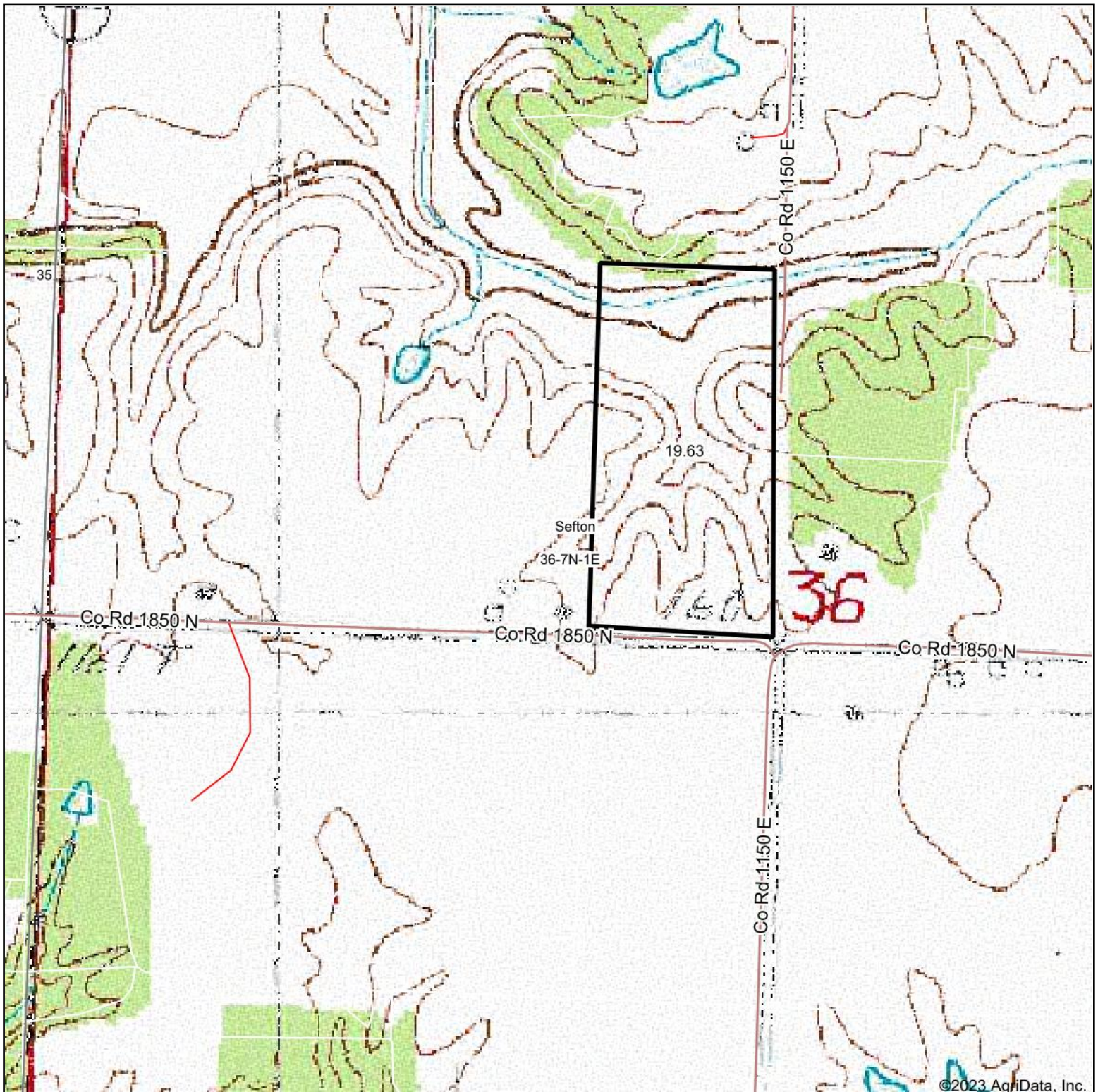
Crop yields and productivity indices for optimum management (B811) are maintained at the following NRES web site: <http://soilproductivity.nres.illinois.edu/>

** Indexes adjusted for slope and erosion according to Bulletin 811 Table S3

e Soils in the well drained group were not rated for grass-legume and are shown with a zero "0".

Soils data provided by USDA and NRCS. Soils data provided by University of Illinois at Champaign-Urbana.

Topography Map



map center: 39° 0' 20.53, -89° 2' 26.39

0ft 562ft 1124ft



Maps Provided By:



© AgriData, Inc. 2021

www.AgriDataInc.com

36-7N-1E
Fayette County
Illinois



2/19/2023

Field borders provided by Farm Service Agency as of 5/21/2008.