

Aerial Map



©2023 AgriData, Inc.

Map Center: 39° 0' 22.34, -89° 2' 36.84



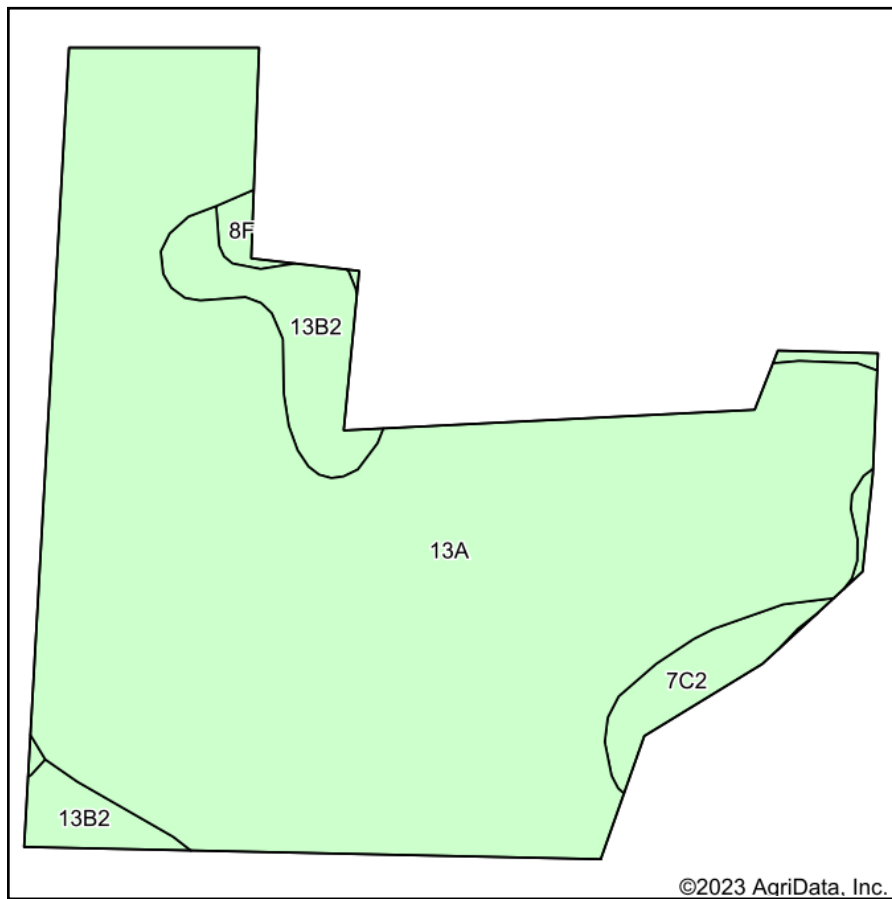
**36-7N-1E**  
**Fayette County**  
**Illinois**



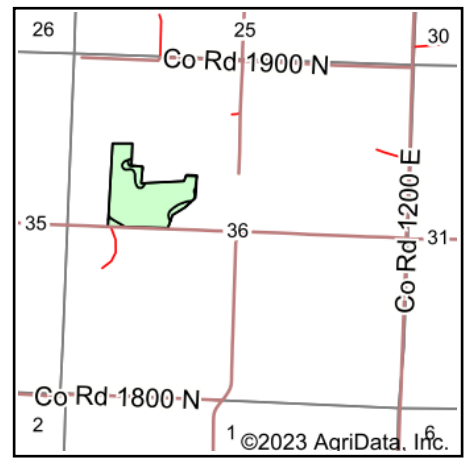
Maps Provided By:  
 **surety**<sup>®</sup>  
CUSTOMIZED ONLINE MAPPING  
© AgriData, Inc. 2021      www.AgriDataInc.com

Field borders provided by Farm Service Agency as of 5/21/2008.

# Soils Map



Soils data provided by USDA and NRCS.



State: **Illinois**  
 County: **Fayette**  
 Location: **36-7N-1E**  
 Township: **Sefton**  
 Acres: **24.83**  
 Date: **2/19/2023**



Maps Provided By:



Area Symbol: IL051, Soil Area Version: 18

Code	Soil Description	Acres	Percent of field	Corn Bu/A	Soybeans Bu/A	Wheat Bu/A	Grass-legume e hay, T/A	Crop productivity index for optimum management
13A	Bluford silt loam, 0 to 2 percent slopes	22.00	88.6%	136	44	55	3.39	101
**13B2	Bluford silt loam, 2 to 5 percent slopes, eroded	1.75	7.0%	**129	**42	**52	**3.22	**96
**7C2	Atlas silt loam, 5 to 10 percent slopes, eroded	0.75	3.0%	**105	**37	**41	**3.16	**81
**8F	Hickory silt loam, 18 to 35 percent slopes	0.33	1.3%	**86	**29	**35	0.00	**65
<b>Weighted Average</b>				<b>133.9</b>	<b>43.4</b>	<b>54.1</b>	<b>3.33</b>	<b>99.6</b>

**Table: Optimum Crop Productivity Ratings for Illinois Soil by K.R. Olson and J.M. Lang, Office of Research, ACES, University of Illinois at Champaign-Urbana.** Version: 1/2/2012 Amended Table S2 B811

Crop yields and productivity indices for optimum management (B811) are maintained at the following NRES web site: <http://soilproductivity.nres.illinois.edu/>

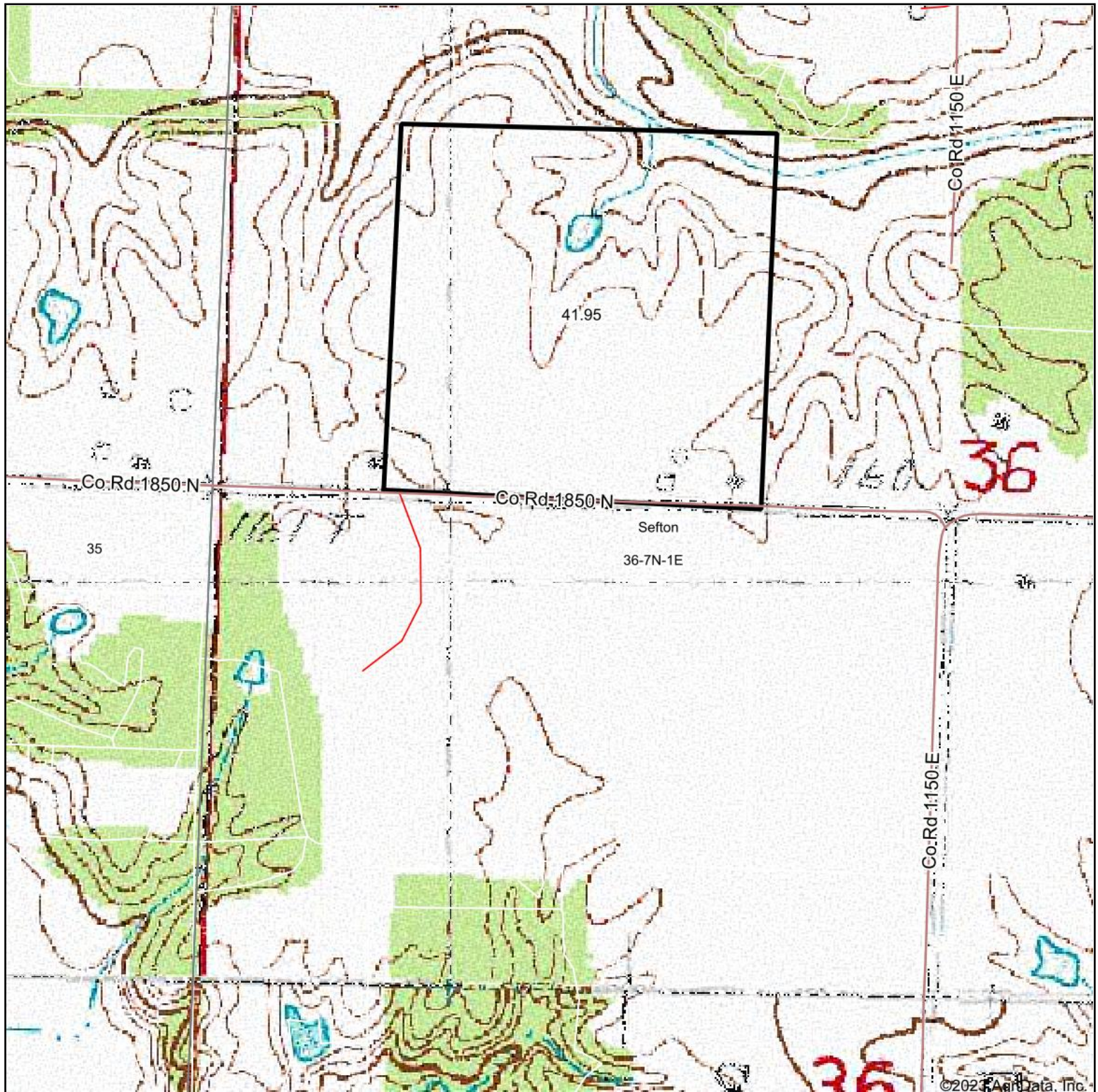
\*\* Indexes adjusted for slope and erosion according to Bulletin 811 Table S3

e Soils in the well drained group were not rated for grass-legume and are shown with a zero "0".

Soils data provided by USDA and NRCS. Soils data provided by University of Illinois at Champaign-Urbana.



# Topography Map



map center: 39° 0' 15.76, -89° 2' 34.01

0ft 562ft 1124ft



Maps Provided By:



© AgriData, Inc. 2021

www.AgrIDataInc.com

**36-7N-1E**  
**Fayette County**  
**Illinois**



2/19/2023

Field borders provided by Farm Service Agency as of 5/21/2008.