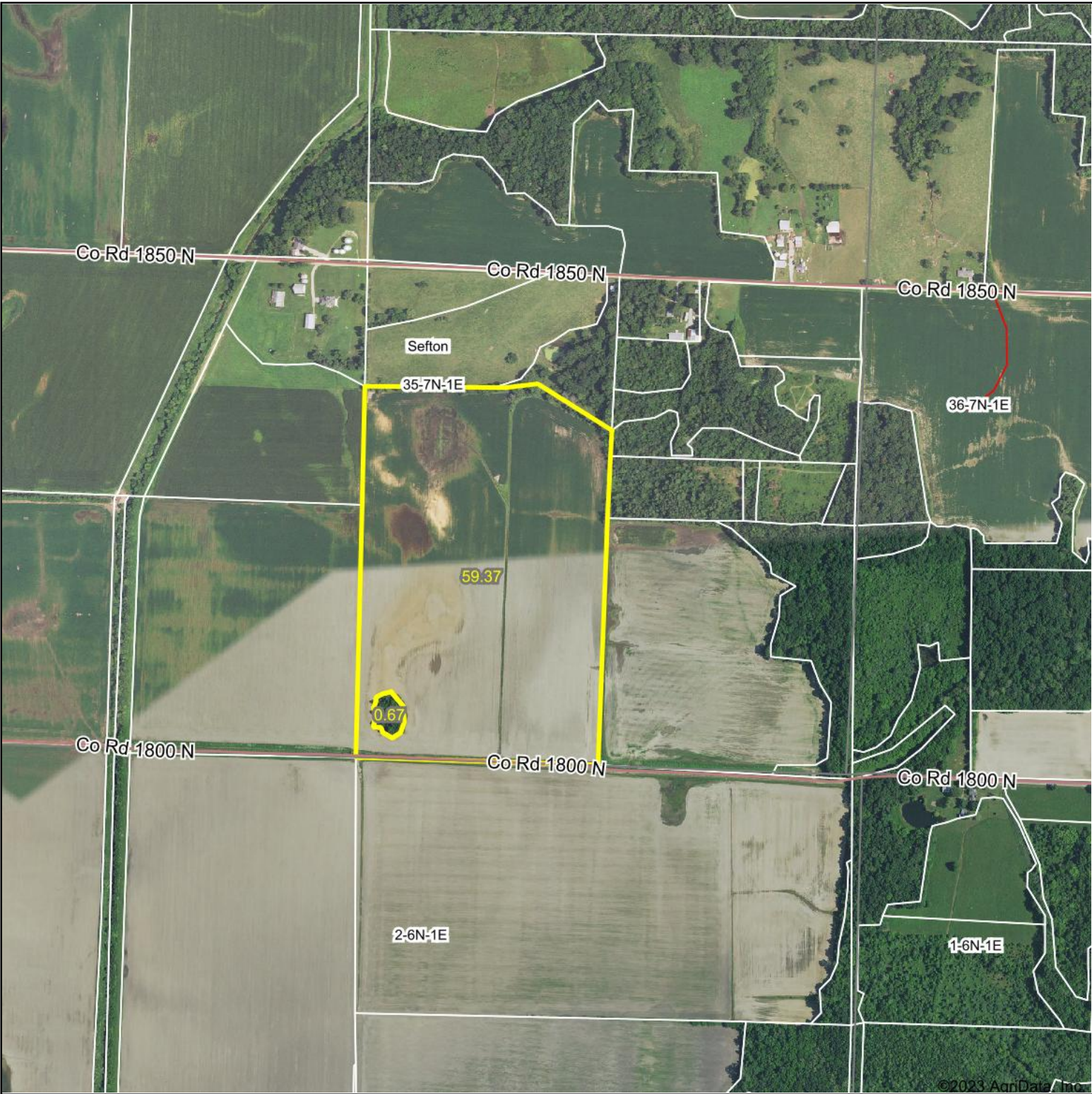
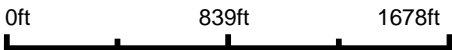


Aerial Map



Map Center: 39° 0' 3.42, -89° 3' 10.93

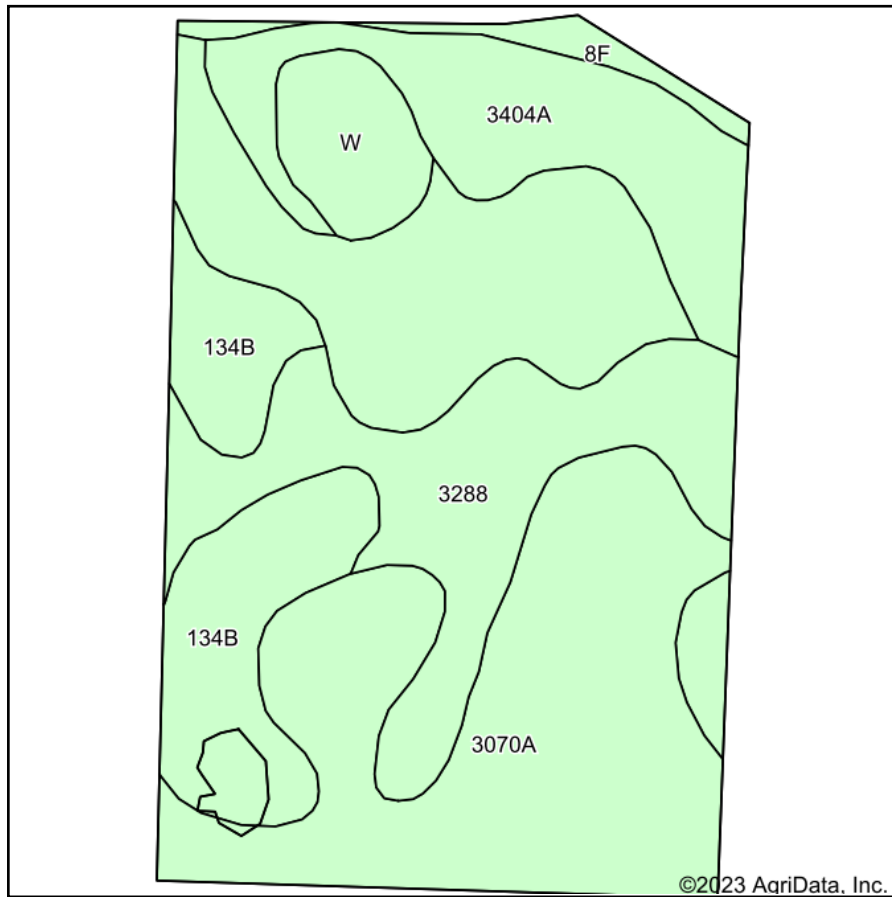


35-7N-1E
Fayette County
Illinois

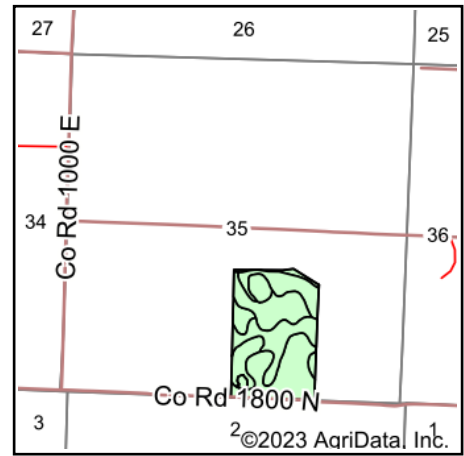


Maps Provided By:
 **surety**
CUSTOMIZED ONLINE MAPPING
© AgriData, Inc. 2021 www.AgriDataInc.com

Soils Map



Soils data provided by USDA and NRCS.



State: **Illinois**
 County: **Fayette**
 Location: **35-7N-1E**
 Township: **Sefton**
 Acres: **60.04**
 Date: **2/19/2023**



Maps Provided By:



Area Symbol: IL051, Soil Area Version: 18

Code	Soil Description	Acres	Percent of field	Corn Bu/A	Soybeans Bu/A	Wheat Bu/A	Grass-legume e hay, T/A	Crop productivity index for optimum management
3070A	Beaucoup silty clay loam, 0 to 2 percent slopes, frequently flooded	28.73	47.9%	176	58	69	5.39	132
3288	Petrolia silt loam, frequently flooded	10.50	17.5%	162	49	61	4.89	117
3404A	Titus silty clay loam, 0 to 2 percent slopes, frequently flooded	8.80	14.7%	158	52	61	4.89	118
**134B	Camden silt loam, 2 to 5 percent slopes	8.07	13.4%	**164	**50	**63	0.00	**118
W	Water	2.73	4.5%					
**8F	Hickory silt loam, 18 to 35 percent slopes	1.21	2.0%	**86	**29	**35	0.00	**65
Weighted Average				159.5	51.2	61.8	4.15	118.1

Table: Optimum Crop Productivity Ratings for Illinois Soil by K.R. Olson and J.M. Lang, Office of Research, ACES, University of Illinois at Champaign-Urbana. Version: 1/2/2012 Amended Table S2 B811

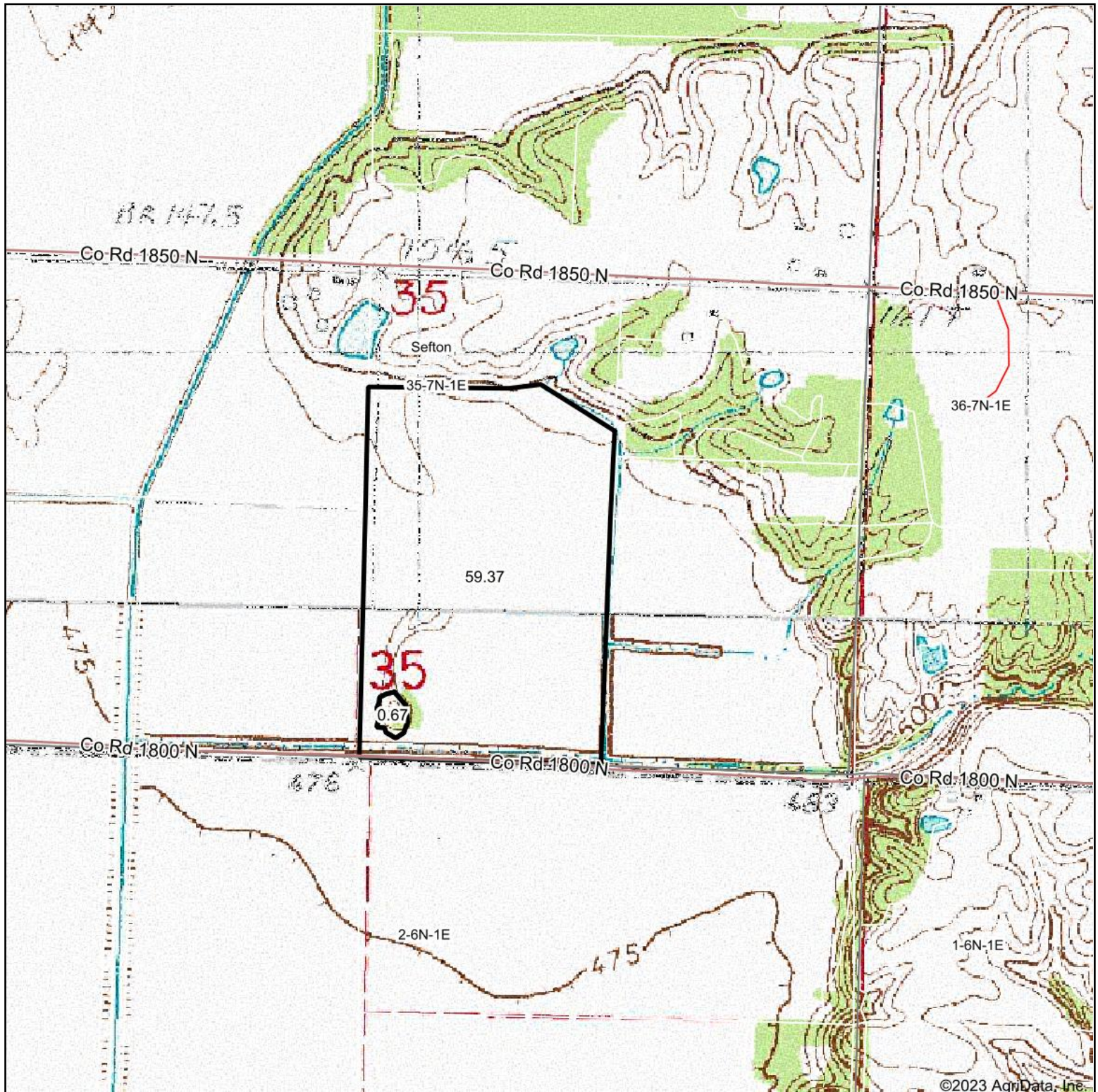
Crop yields and productivity indices for optimum management (B811) are maintained at the following NRES web site: <http://soilproductivity.nres.illinois.edu/>

** Indexes adjusted for slope and erosion according to Bulletin 811 Table S3

e Soils in the well drained group were not rated for grass-legume and are shown with a zero "0".

Soils data provided by USDA and NRCS. Soils data provided by University of Illinois at Champaign-Urbana.

Topography Map



map center: 39° 0' 3.42, -89° 3' 10.93

0ft 839ft 1678ft

35-7N-1E
Fayette County
Illinois



Maps Provided By:



© AgriData, Inc. 2021

www.AgriDataInc.com

Field borders provided by Farm Service Agency as of 5/21/2008.