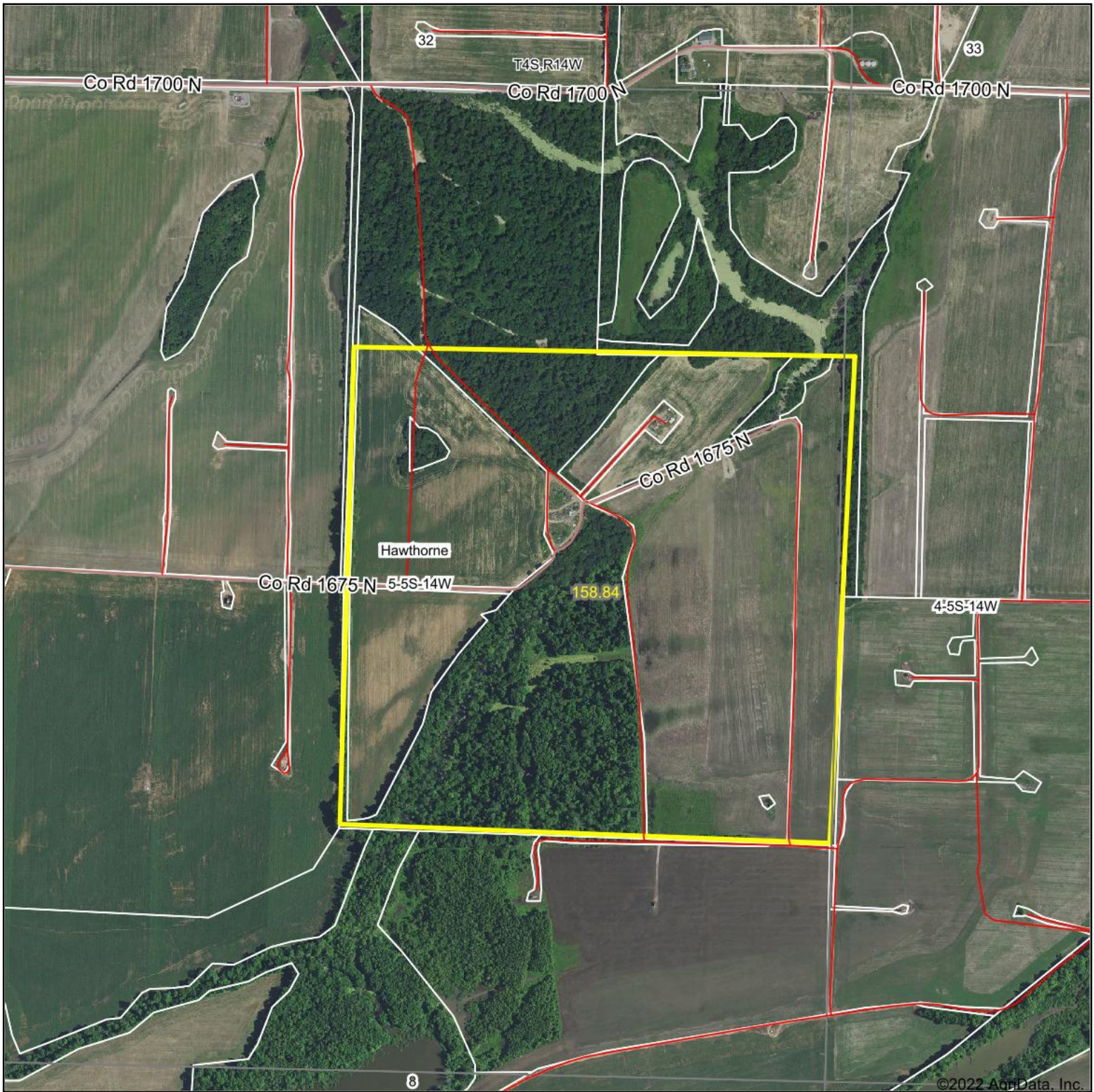


Aerial Map



Map Center: 38° 7' 17.86, -88° 0' 1.11

0ft 836ft 1671ft

5-5S-14W
White County
Illinois



Maps Provided By:

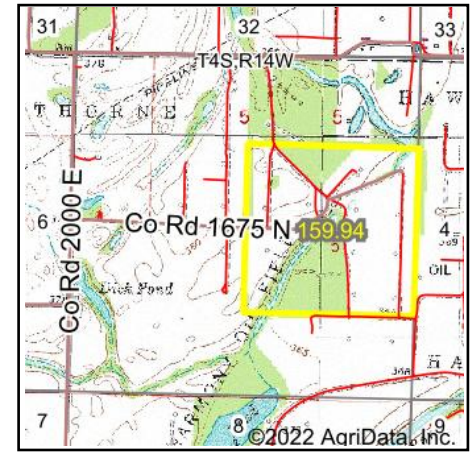
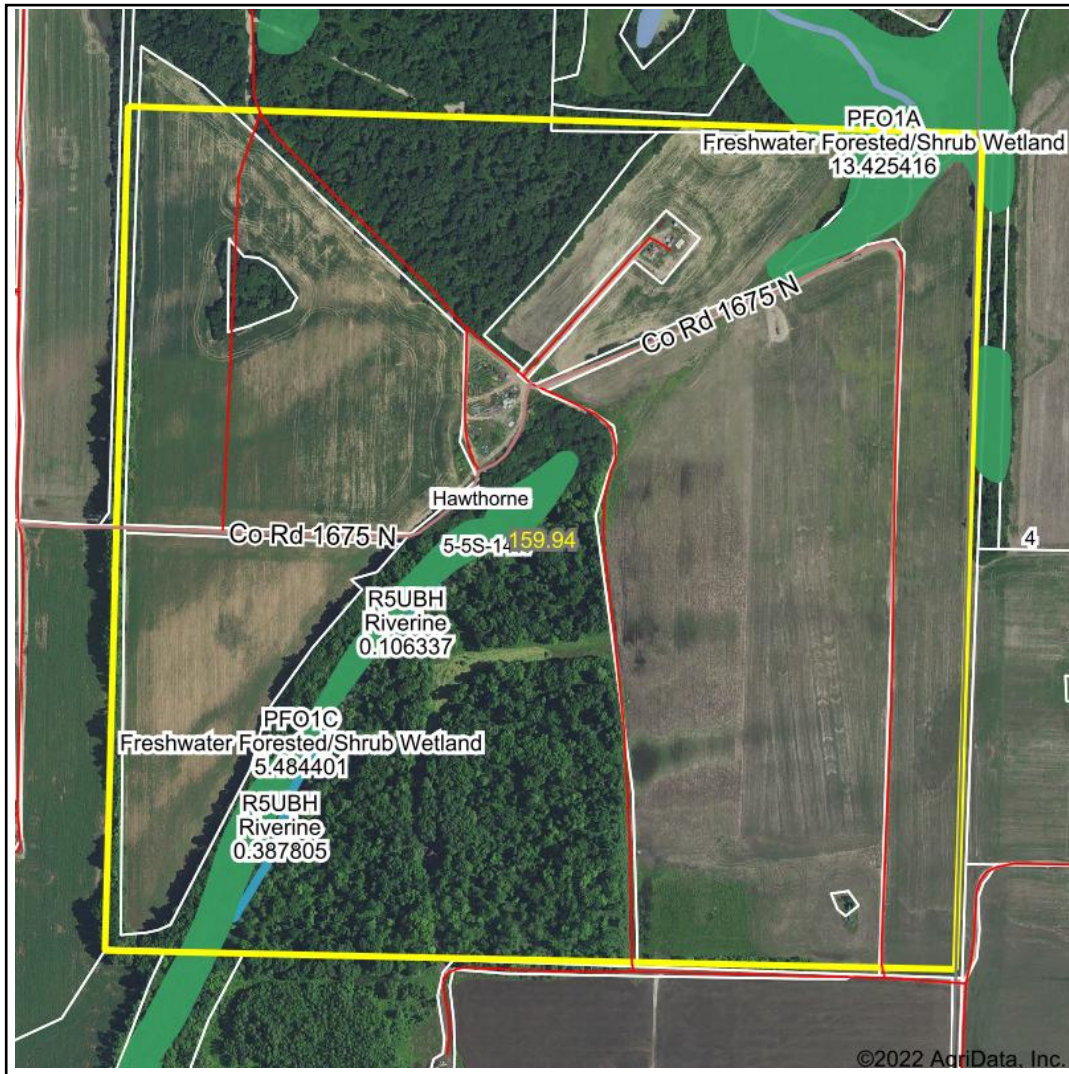


© AgriData, Inc. 2021

www.AgriDataInc.com

Field borders provided by Farm Service Agency as of 5/21/2008.

Wetlands Map



State: **Illinois**
 Location: **5-5S-14W**
 County: **White**
 Township: **Hawthorne**
 Date: **12/10/2022**

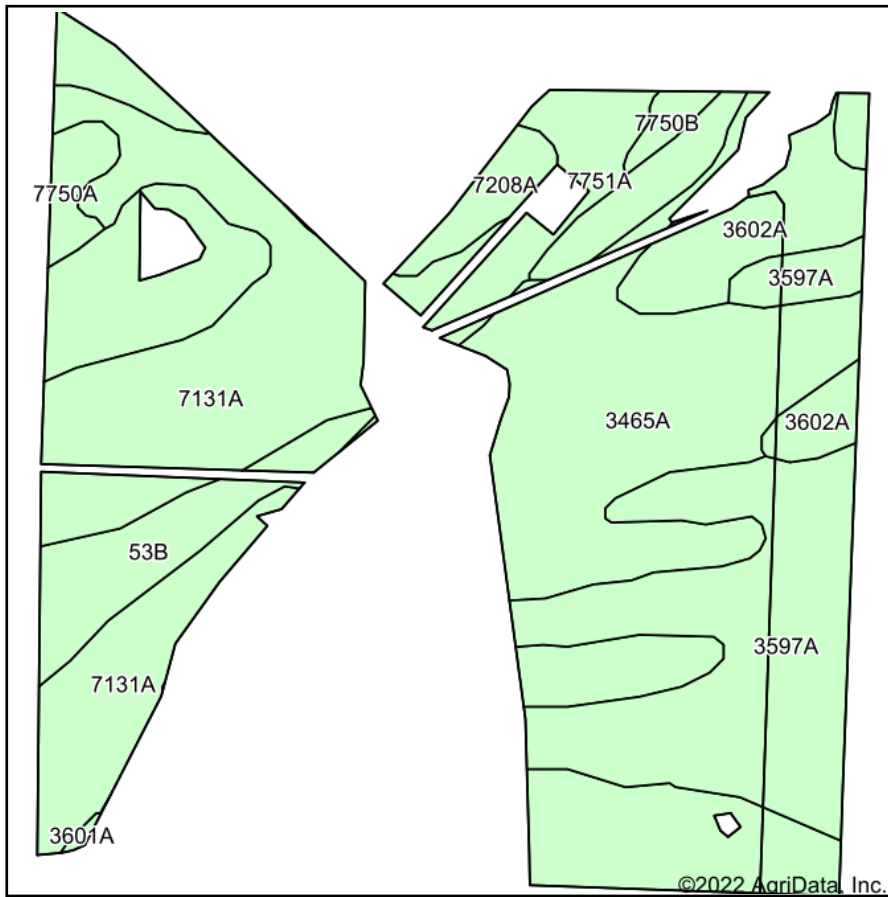
BUY A FARM
LAND & AUCTION COMPANY LLC
 Maps Provided By:
surety
 CUSTOMIZED ONLINE MAPPING
 © AgriData, Inc. 2021 www.AgriDataInc.com

0ft 687ft 1374ft

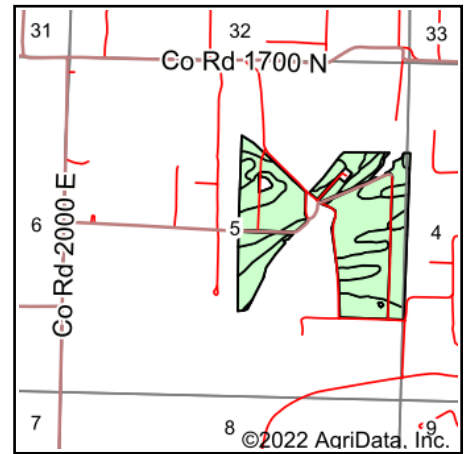
Classification Code	Type	Acres
PFO1C	Freshwater Forested/Shrub Wetland	4.72
PFO1A	Freshwater Forested/Shrub Wetland	2.81
R5UBH	Riverine	0.49
Total Acres		8.02

Data Source: National Wetlands Inventory website. U.S. DoI, Fish and Wildlife Service, Washington, D.C. <http://www.fws.gov/wetlands/>

Soils Map



Soils data provided by USDA and NRCS.



State: **Illinois**
 County: **White**
 Location: **5-5S-14W**
 Township: **Hawthorne**
 Acres: **105.14**
 Date: **12/10/2022**



Maps Provided By:



Area Symbol: IL193, Soil Area Version: 17

Code	Soil Description	Acres	Percent of field	Corn Bu/A	Soybeans Bu/A	Wheat Bu/A	Grass-legume e hay, T/A	Crop productivity index for optimum management
3465A	Montgomery silty clay loam, 0 to 2 percent slopes, frequently flooded	29.80	28.3%	148	49	58	4.52	110
7131A	Alvin fine sandy loam, 0 to 2 percent slopes, rarely flooded	23.46	22.3%	150	49	59	0.00	111
3597A	Armiesburg silty clay loam, 0 to 2 percent slopes, frequently flooded	21.15	20.1%	177	57	69	0.00	132
**53B	Bloomfield fine sand, 1 to 5 percent slopes	11.10	10.6%	**114	**37	**49	**3.85	**84
3602A	Newark silt loam, 0 to 2 percent slopes, frequently flooded	9.18	8.7%	134	44	58	4.77	104
7751A	Crawleyville fine sandy loam, 0 to 2 percent slopes, rarely flooded	6.03	5.7%	144	46	56	4.39	107
7208A	Sexton silt loam, 0 to 2 percent slopes, rarely flooded	1.97	1.9%	157	50	63	4.89	116
7750A	Skelton fine sandy loam, 0 to 2 percent slopes, rarely flooded	1.56	1.5%	144	45	55	0.00	105
7750B	Skelton fine sandy loam, 2 to 5 percent slopes, rarely flooded	0.77	0.7%	144	45	55	0.00	105
3601A	Nolin silty clay loam, 0 to 2 percent slopes, frequently flooded	0.12	0.1%	159	51	60	0.00	116
Weighted Average				149.3	48.7	59.4	2.45	111.2

Table: Optimum Crop Productivity Ratings for Illinois Soil by K.R. Olson and J.M. Lang, Office of Research, ACES, University of Illinois at Champaign-Urbana. Version: 1/2/2012 Amended Table S2 B811

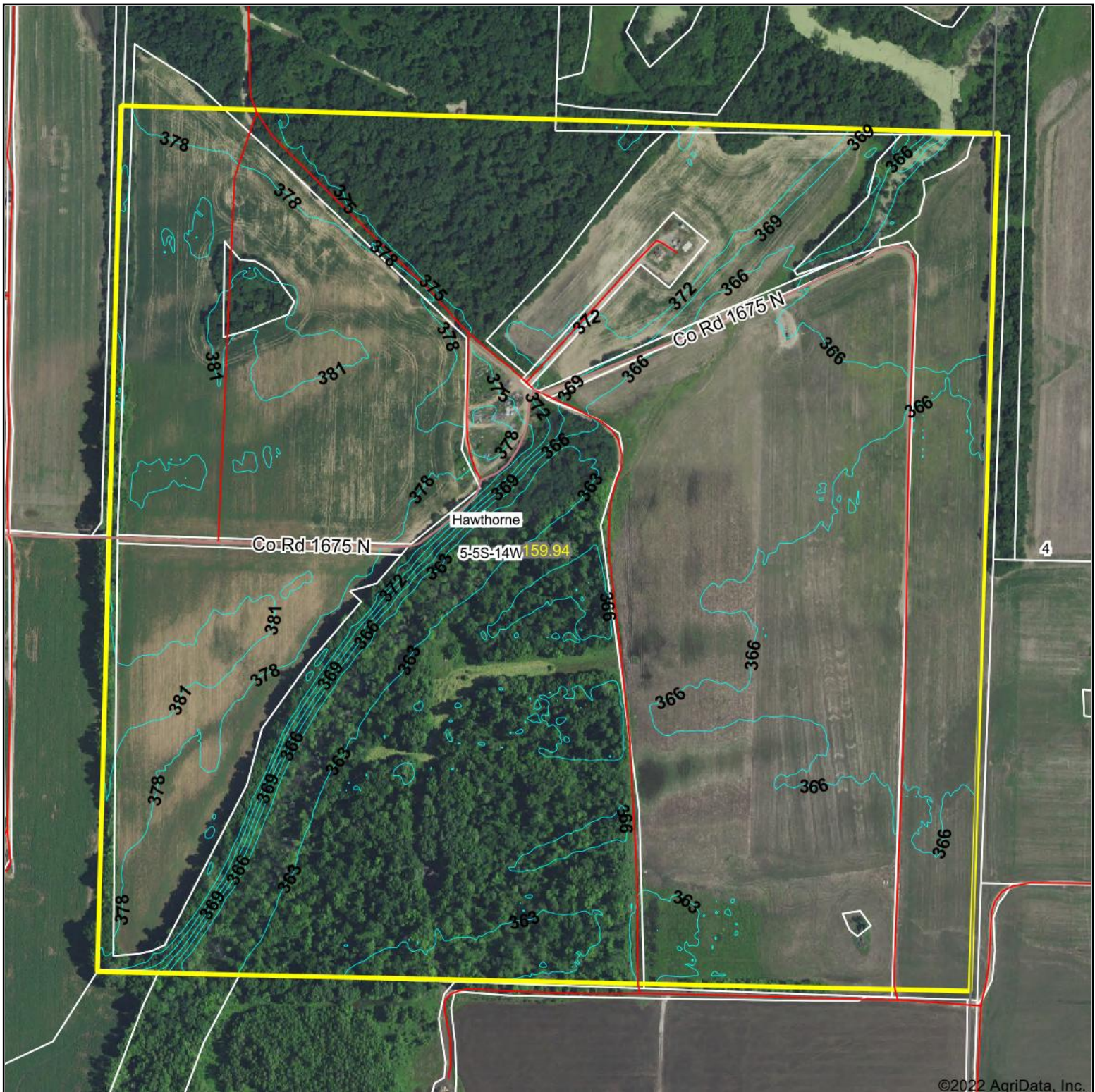
Crop yields and productivity indices for optimum management (B811) are maintained at the following NRES web site: <http://soilproductivity.nres.illinois.edu/>

** Indexes adjusted for slope and erosion according to Bulletin 811 Table S3

e Soils in the well drained group were not rated for grass-legume and are shown with a zero "0".

Soils data provided by USDA and NRCS. Soils data provided by University of Illinois at Champaign-Urbana.

Topography Contours



Source: USGS 3 meter dem

Interval(ft): 3.0

Min: 360.9

Max: 383.8

Range: 22.9

Average: 370.1

Standard Deviation: 6.3 ft

0ft 473ft 945ft



12/10/2022

5-5S-14W
White County
Illinois

Map Center: 38° 7' 21.86, -88° 0' 0.75



Maps Provided By:

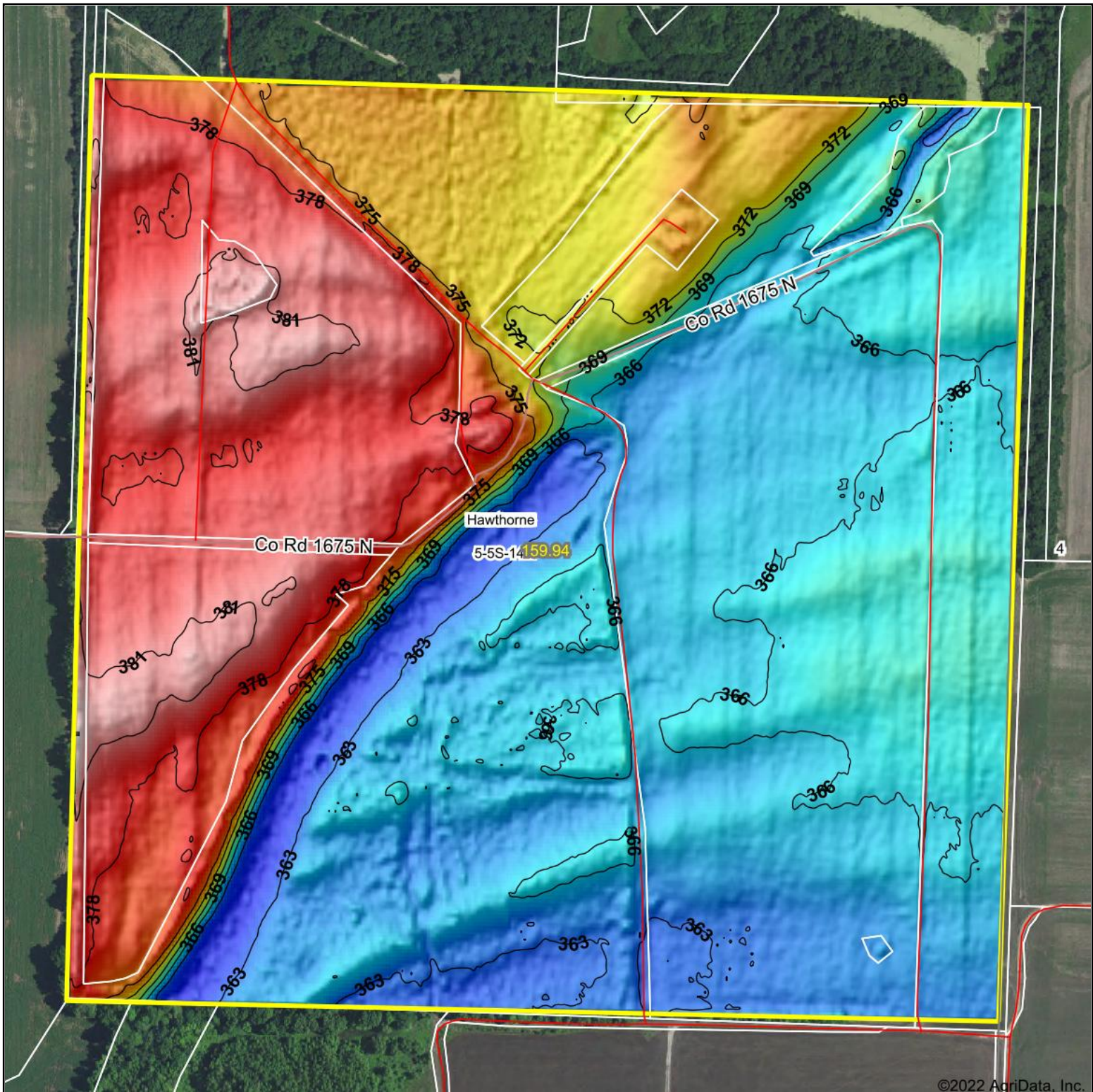


© AgriData, Inc. 2021

www.AgriDataInc.com

Field borders provided by Farm Service Agency as of 5/21/2008.

Topography Hillshade



©2022 AgriData, Inc.



Source: USGS 3 meter dem

Interval(ft): 3

Min: 360.9

Max: 383.8

Range: 22.9

Average: 370.1

Standard Deviation: 6.3 ft



12/10/2022

5-5S-14W
White County
Illinois

map center: 38° 7' 21.86, -88° 0' 0.75



Maps Provided By:

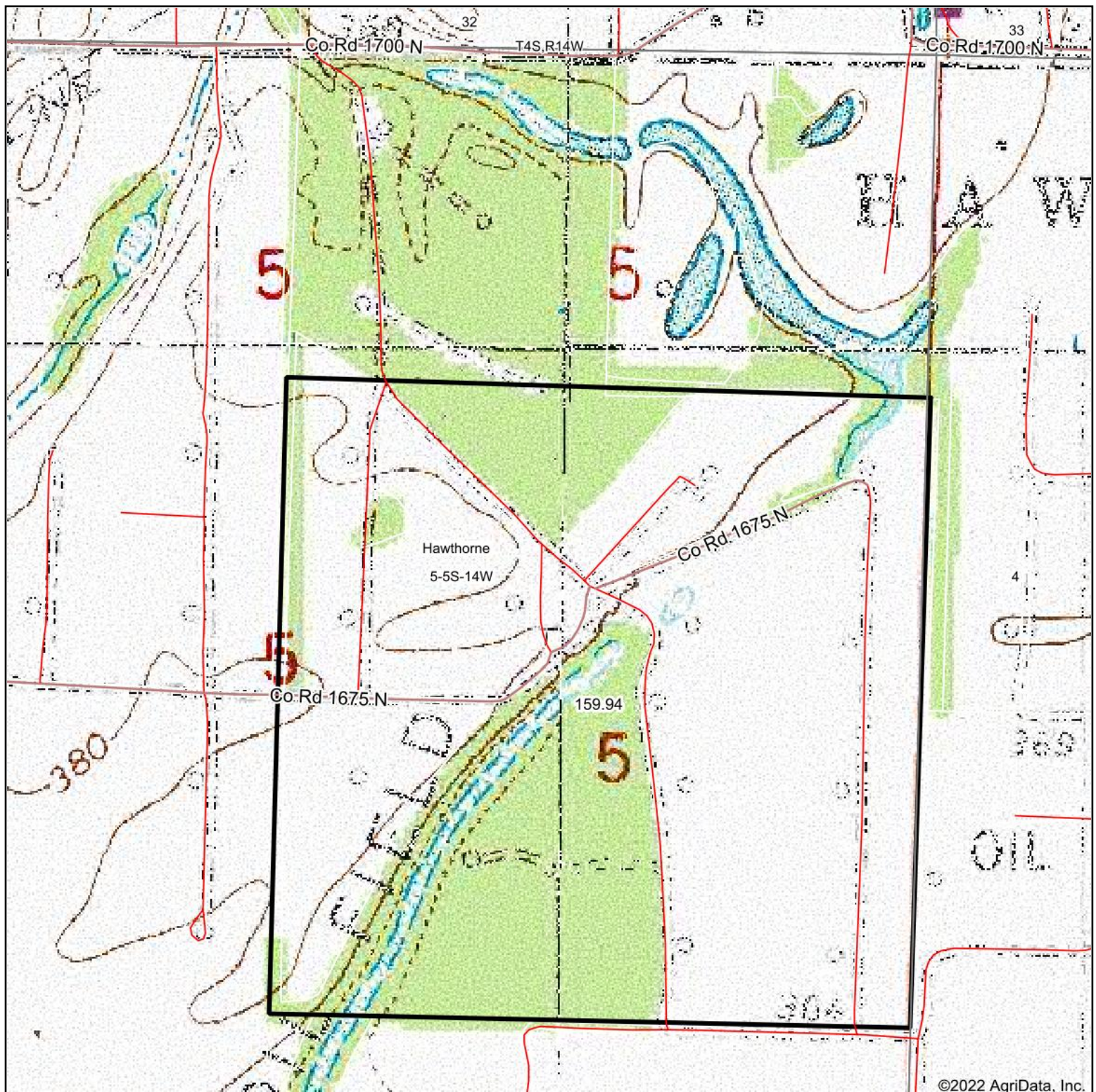


© AgriData, Inc. 2021

www.AgriDataInc.com

Field borders provided by Farm Service Agency as of 5/21/2008.

Topography Map



map center: 38° 7' 21.86, -88° 0' 0.75

0ft 642ft 1284ft



Maps Provided By:



© AgriData, Inc. 2021

www.AgriDataInc.com

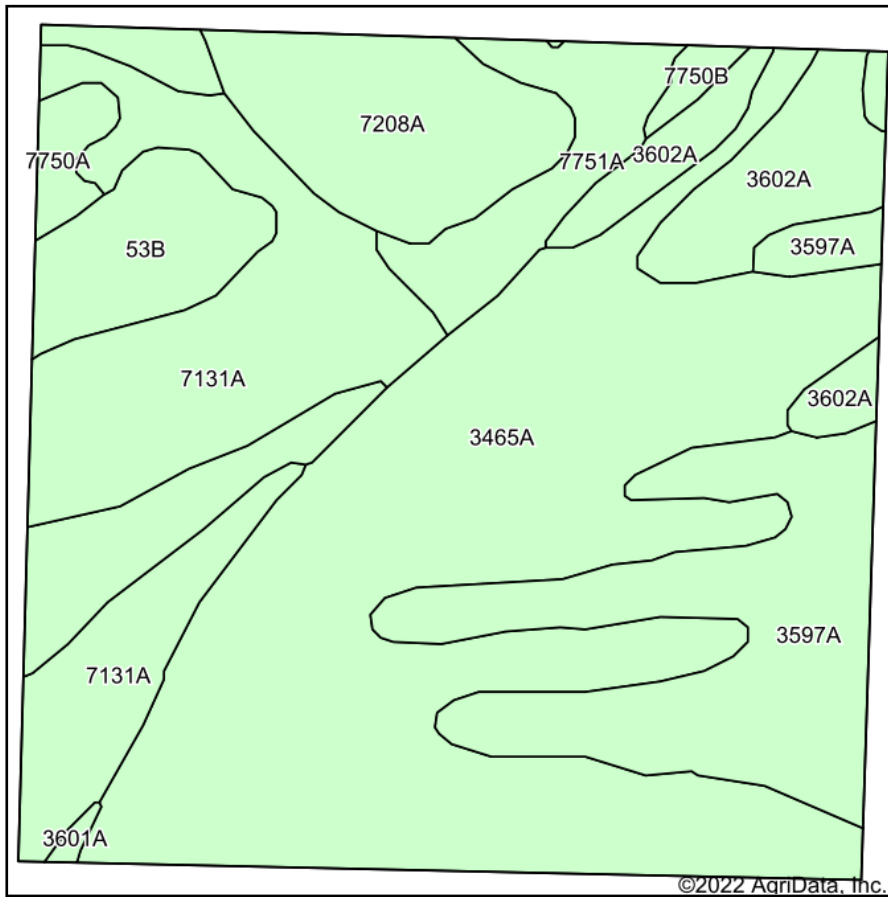
5-5S-14W
White County
Illinois



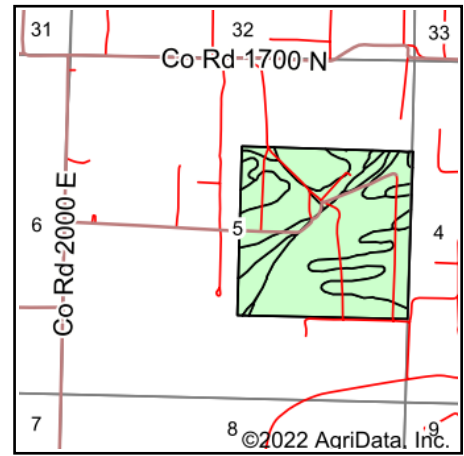
12/10/2022

Field borders provided by Farm Service Agency as of 5/21/2008.

Soils Map



Soils data provided by USDA and NRCS.



State: **Illinois**
 County: **White**
 Location: **5-5S-14W**
 Township: **Hawthorne**
 Acres: **159.94**
 Date: **12/10/2022**



Maps Provided By:



Area Symbol: IL193, Soil Area Version: 17

Code	Soil Description	Acres	Percent of field	Corn Bu/A	Soybeans Bu/A	Wheat Bu/A	Grass-legume e hay, T/A	Crop productivity index for optimum management
3465A	Montgomery silty clay loam, 0 to 2 percent slopes, frequently flooded	63.91	40.0%	148	49	58	4.52	110
7131A	Alvin fine sandy loam, 0 to 2 percent slopes, rarely flooded	26.67	16.7%	150	49	59	0.00	111
3597A	Armiesburg silty clay loam, 0 to 2 percent slopes, frequently flooded	23.23	14.5%	177	57	69	0.00	132
**53B	Bloomfield fine sand, 1 to 5 percent slopes	12.78	8.0%	**114	**37	**49	**3.85	**84
7208A	Sexton silt loam, 0 to 2 percent slopes, rarely flooded	11.66	7.3%	157	50	63	4.89	116
3602A	Newark silt loam, 0 to 2 percent slopes, frequently flooded	10.31	6.4%	134	44	58	4.77	104
7751A	Crawleyville fine sandy loam, 0 to 2 percent slopes, rarely flooded	8.35	5.2%	144	46	56	4.39	107
7750A	Skelton fine sandy loam, 0 to 2 percent slopes, rarely flooded	1.87	1.2%	144	45	55	0.00	105
7750B	Skelton fine sandy loam, 2 to 5 percent slopes, rarely flooded	0.87	0.5%	144	45	55	0.00	105
3601A	Nolin silty clay loam, 0 to 2 percent slopes, frequently flooded	0.29	0.2%	159	51	60	0.00	116
Weighted Average				149.3	48.7	59.3	3.01	111.1

Table: Optimum Crop Productivity Ratings for Illinois Soil by K.R. Olson and J.M. Lang, Office of Research, ACES, University of Illinois at Champaign-Urbana. Version: 1/2/2012 Amended Table S2 B811

Crop yields and productivity indices for optimum management (B811) are maintained at the following NRES web site: <http://soilproductivity.nres.illinois.edu/>

** Indexes adjusted for slope and erosion according to Bulletin 811 Table S3

e Soils in the well drained group were not rated for grass-legume and are shown with a zero "0".

Soils data provided by USDA and NRCS. Soils data provided by University of Illinois at Champaign-Urbana.