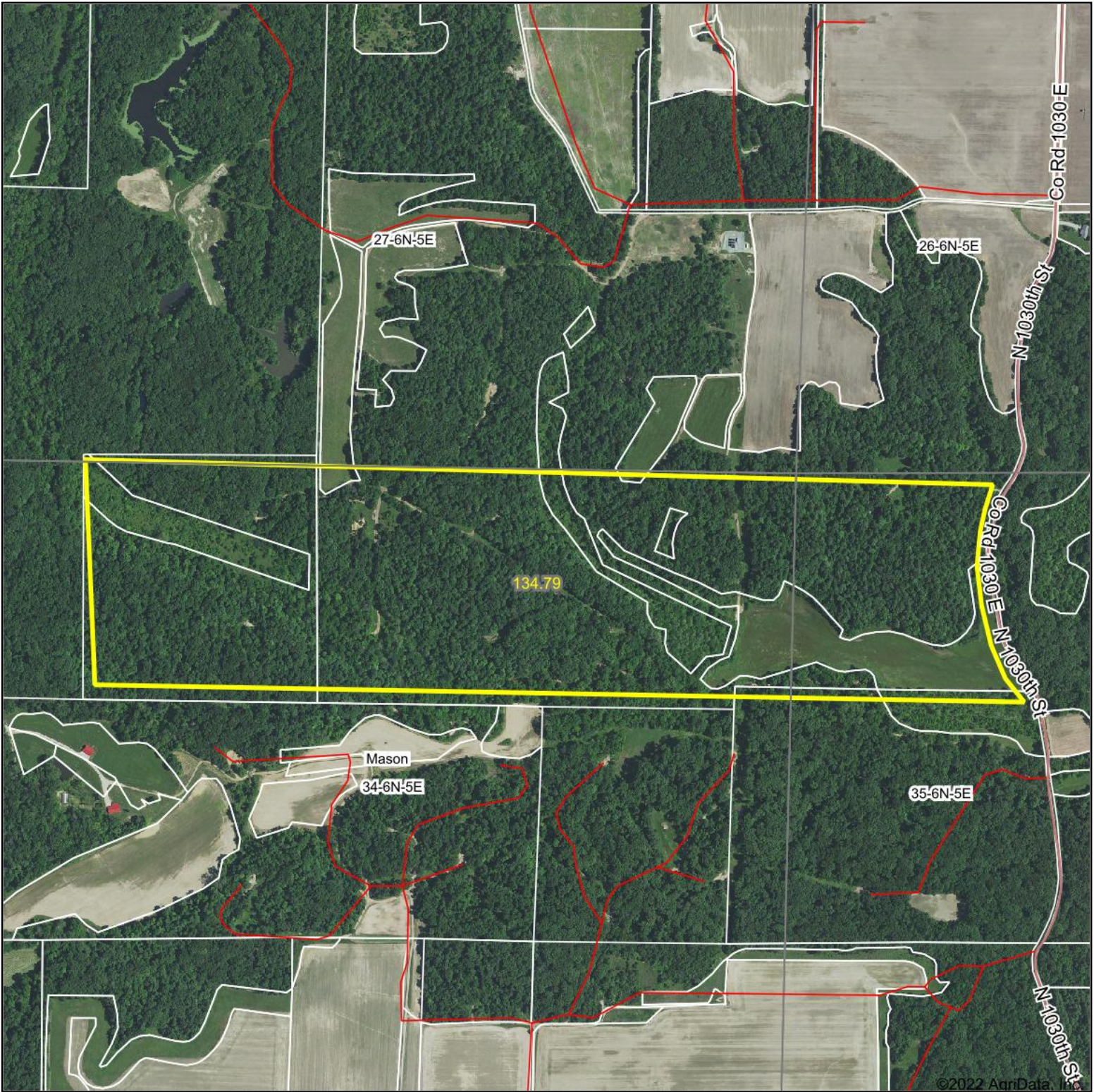
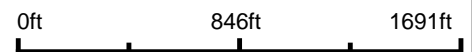


# Aerial Map



Map Center: 38° 55' 42.27, -88° 37' 18.53



**34-6N-5E**  
**Effingham County**  
**Illinois**



12/18/2022



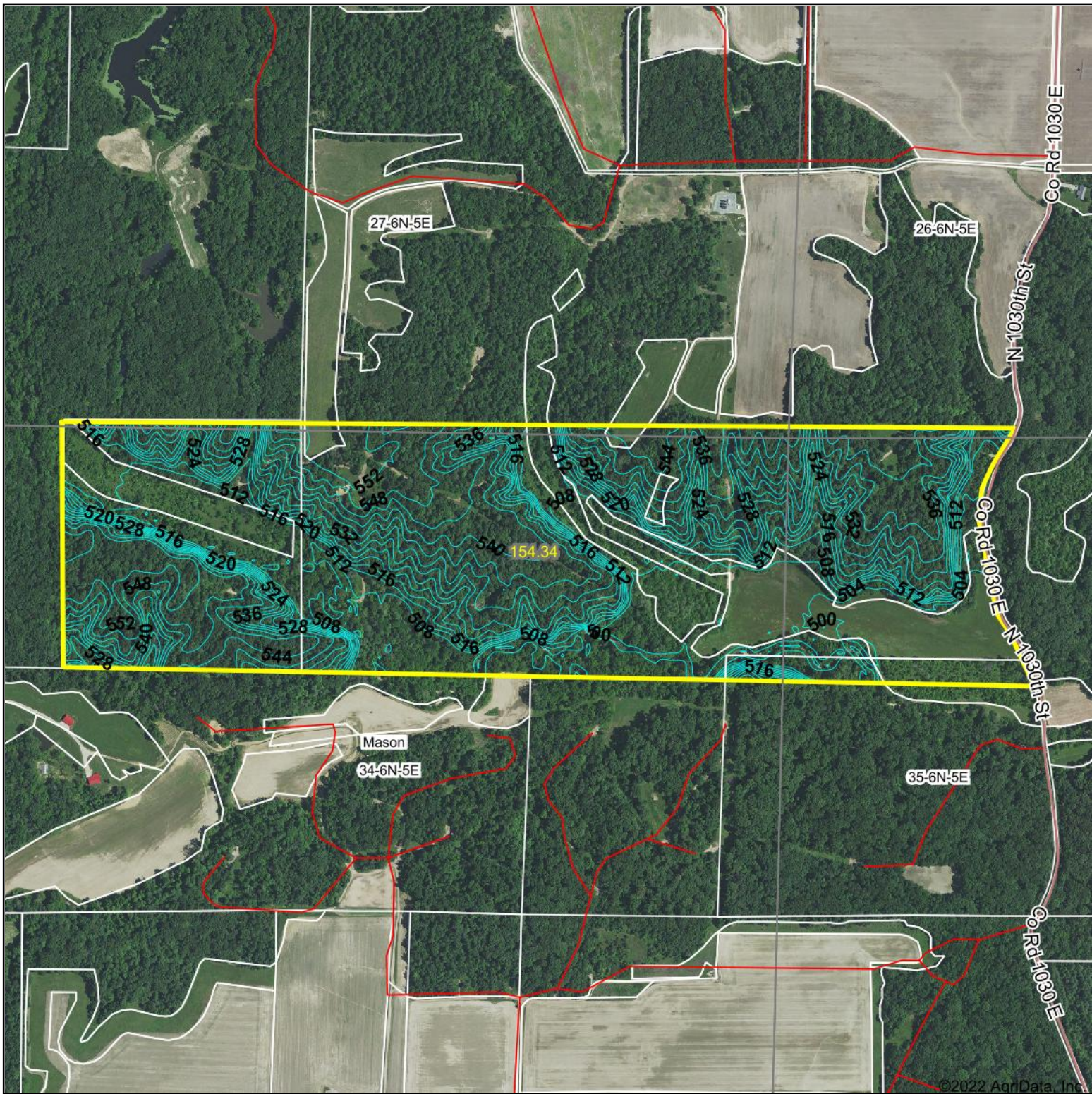
Maps Provided By:



© AgriData, Inc. 2021 www.AgriDataInc.com

Field borders provided by Farm Service Agency as of 5/21/2008.

# Topography Contours



Source: USGS 10 meter dem

Interval(ft): 4.0

Min: 493.7

Max: 557.3

Range: 63.6

Average: 524.0

Standard Deviation: 17.59 ft

0ft 832ft 1664ft



12/15/2022

**34-6N-5E**  
**Effingham County**  
**Illinois**

Map Center: 38° 55' 30.15, -88° 37' 26.36



Maps Provided By:

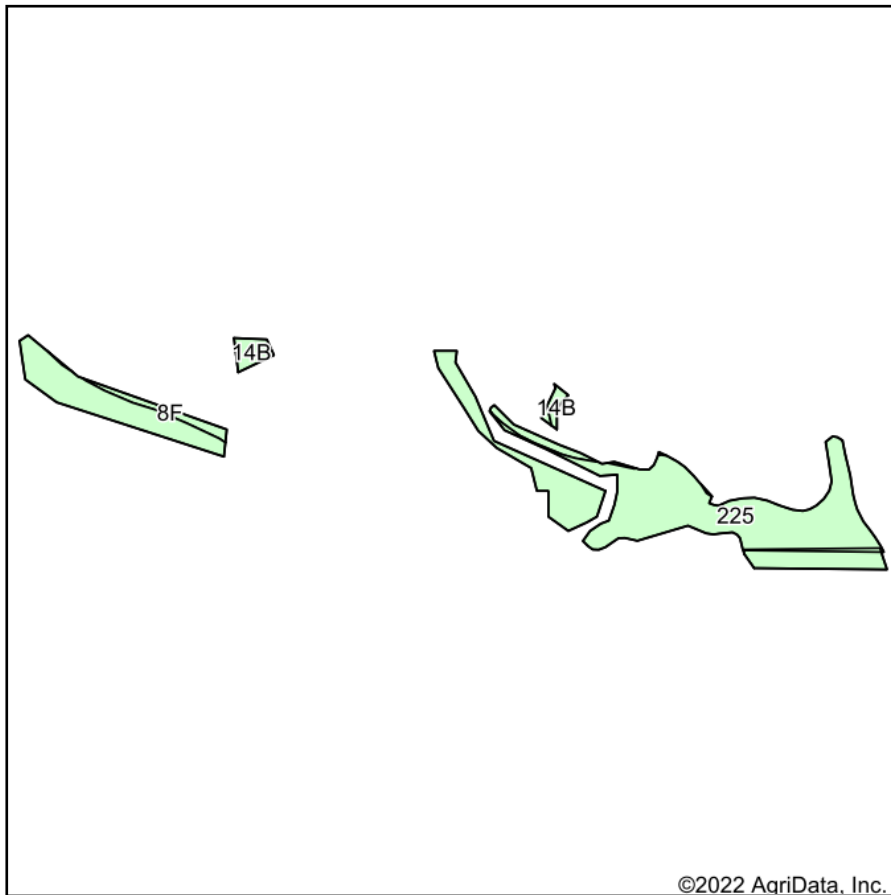


© AgriData, Inc. 2021 www.AgriDataInc.com

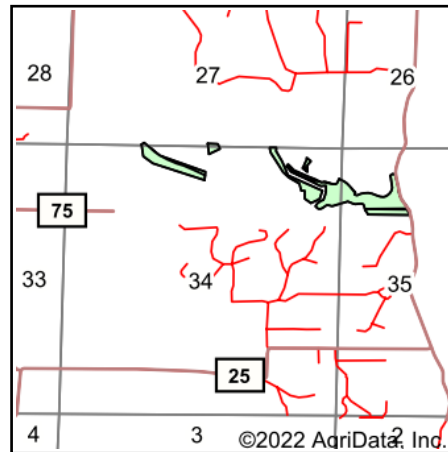
Field borders provided by Farm Service Agency as of 5/21/2008.

©2022 AgriData, Inc.

# Soils Map



Soils data provided by USDA and NRCS.



State: **Illinois**  
 County: **Effingham**  
 Location: **34-6N-5E**  
 Township: **Mason**  
 Acres: **26.76**  
 Date: **12/15/2022**



Maps Provided By:



Area Symbol: IL049, Soil Area Version: 19

Code	Soil Description	Acres	Percent of field	Corn Bu/A	Soybeans Bu/A	Wheat Bu/A	Grass-legume e hay, T/A	Crop productivity index for optimum management
225	Holton silt loam	24.05	89.9%	135	43	50	4.26	100
**8F	Hickory silt loam, 18 to 35 percent slopes	1.64	6.1%	**86	**29	**35	0.00	**65
**14B	Ava silt loam, 2 to 5 percent slopes	1.07	4.0%	**134	**44	**54	0.00	**99
<b>Weighted Average</b>				<b>132</b>	<b>42.2</b>	<b>49.2</b>	<b>3.83</b>	<b>97.8</b>

**Table: Optimum Crop Productivity Ratings for Illinois Soil by K.R. Olson and J.M. Lang, Office of Research, ACES, University of Illinois at Champaign-Urbana.** Version: 1/2/2012 Amended Table S2 B811

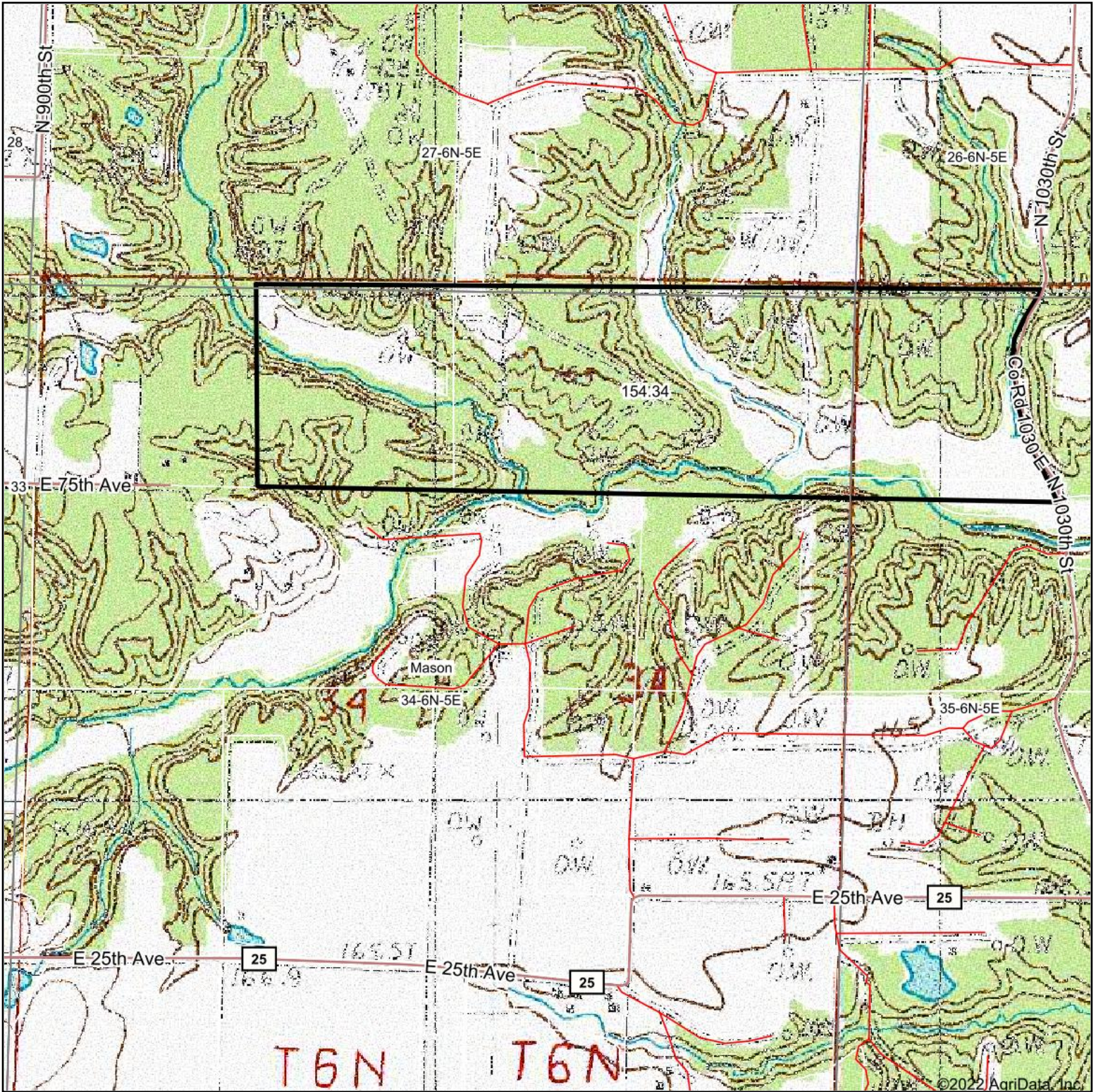
Crop yields and productivity indices for optimum management (B811) are maintained at the following NRES web site: <http://soilproductivity.nres.illinois.edu/>

\*\* Indexes adjusted for slope and erosion according to Bulletin 811 Table S3

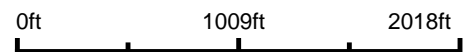
e Soils in the well drained group were not rated for grass-legume and are shown with a zero "0".

Soils data provided by USDA and NRCS. Soils data provided by University of Illinois at Champaign-Urbana.

# Topography Map



map center: 38° 55' 30.15, -88° 37' 26.36



**34-6N-5E**  
**Effingham County**  
**Illinois**



12/15/2022



Maps Provided By:



© AgriData, Inc. 2021 www.AgriDataInc.com