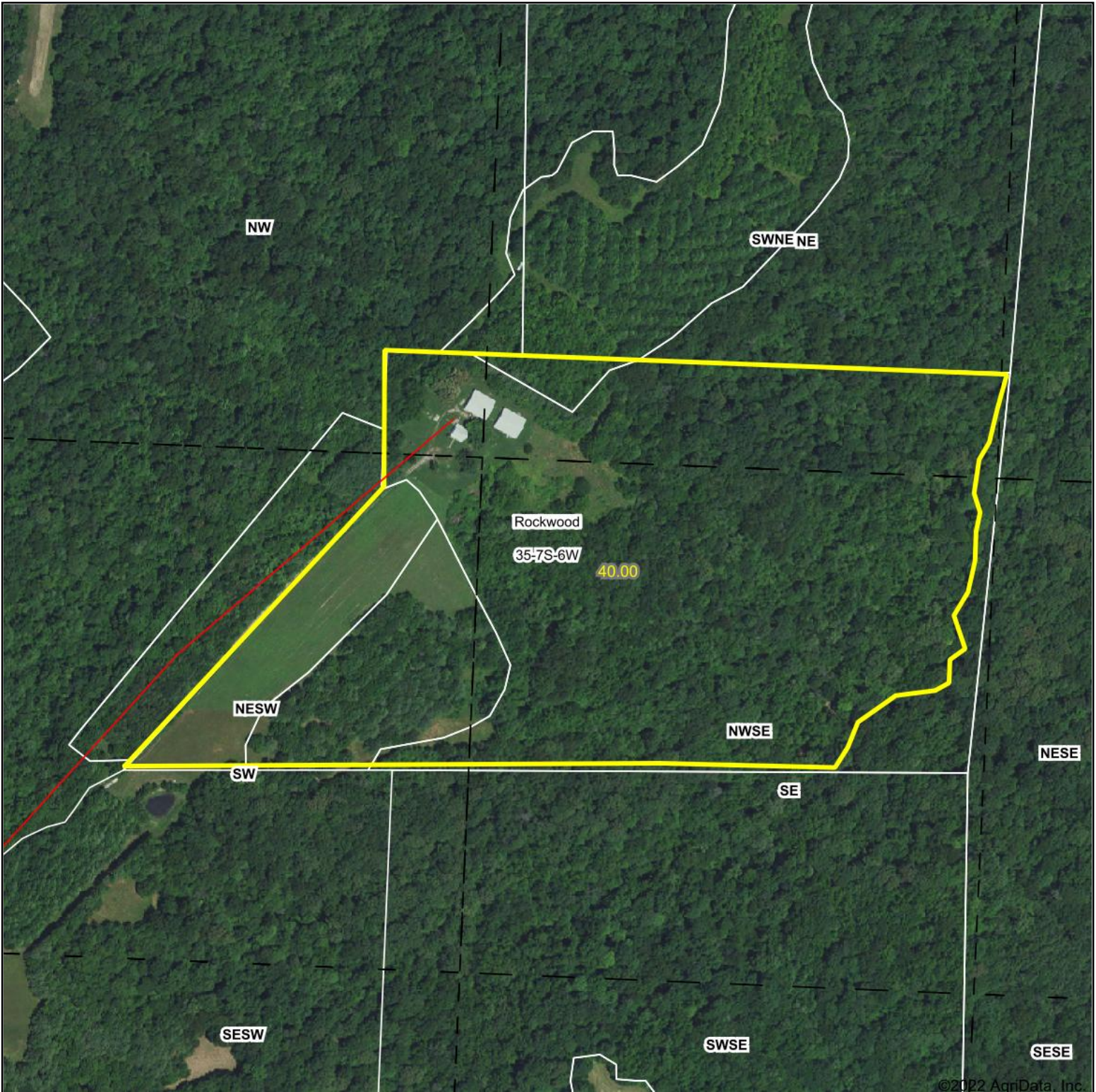
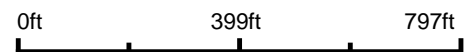


Aerial Map



©2022 AgriData, Inc.

Map Center: 37° 52' 33.03, -89° 44' 0.58



35-7S-6W
Randolph County
Illinois

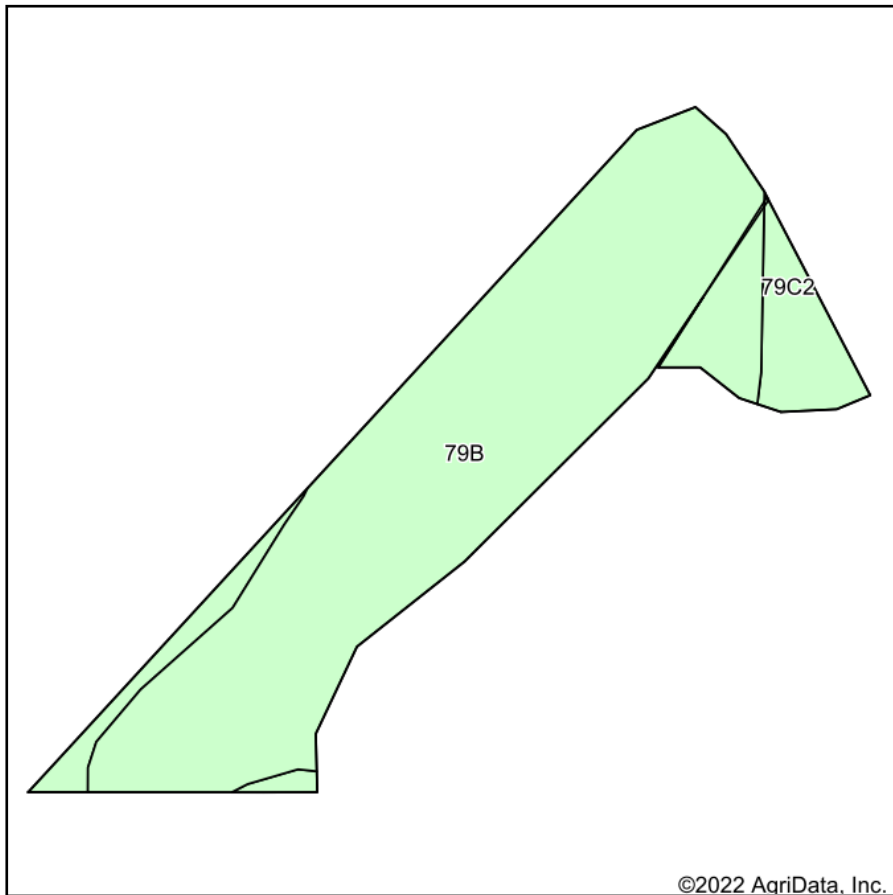


10/10/2022

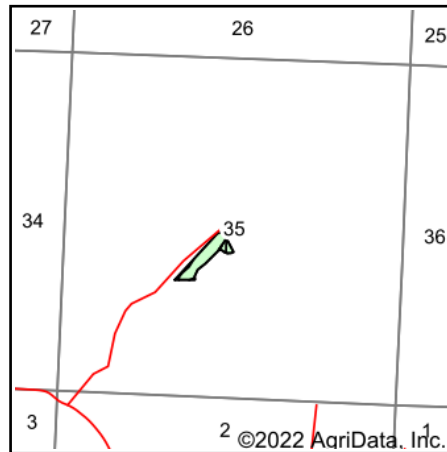
Maps Provided By:
 surety
CUSTOMIZED ONLINE MAPPING
© AgriData, Inc. 2021 www.AgriDataInc.com

Field borders provided by Farm Service Agency as of 5/21/2008.

Soils Map



Soils data provided by USDA and NRCS.



State: **Illinois**
 County: **Randolph**
 Location: **35-7S-6W**
 Township: **Rockwood**
 Acres: **4.5**
 Date: **10/10/2022**



Maps Provided By:



© AgriData, Inc. 2021

www.AgriDataInc.com



Area Symbol: IL157, Soil Area Version: 15							
Code	Soil Description	Acres	Percent of field	Corn Bu/A	Soybeans Bu/A	Wheat Bu/A	Crop productivity index for optimum management
**79B	Menfro silt loam, 2 to 5 percent slopes	3.93	87.3%	**163	**50	**62	**119
**79C2	Menfro silt loam, 5 to 10 percent slopes, eroded	0.57	12.7%	**153	**47	**59	**112
Weighted Average				161.7	49.6	61.6	118.1

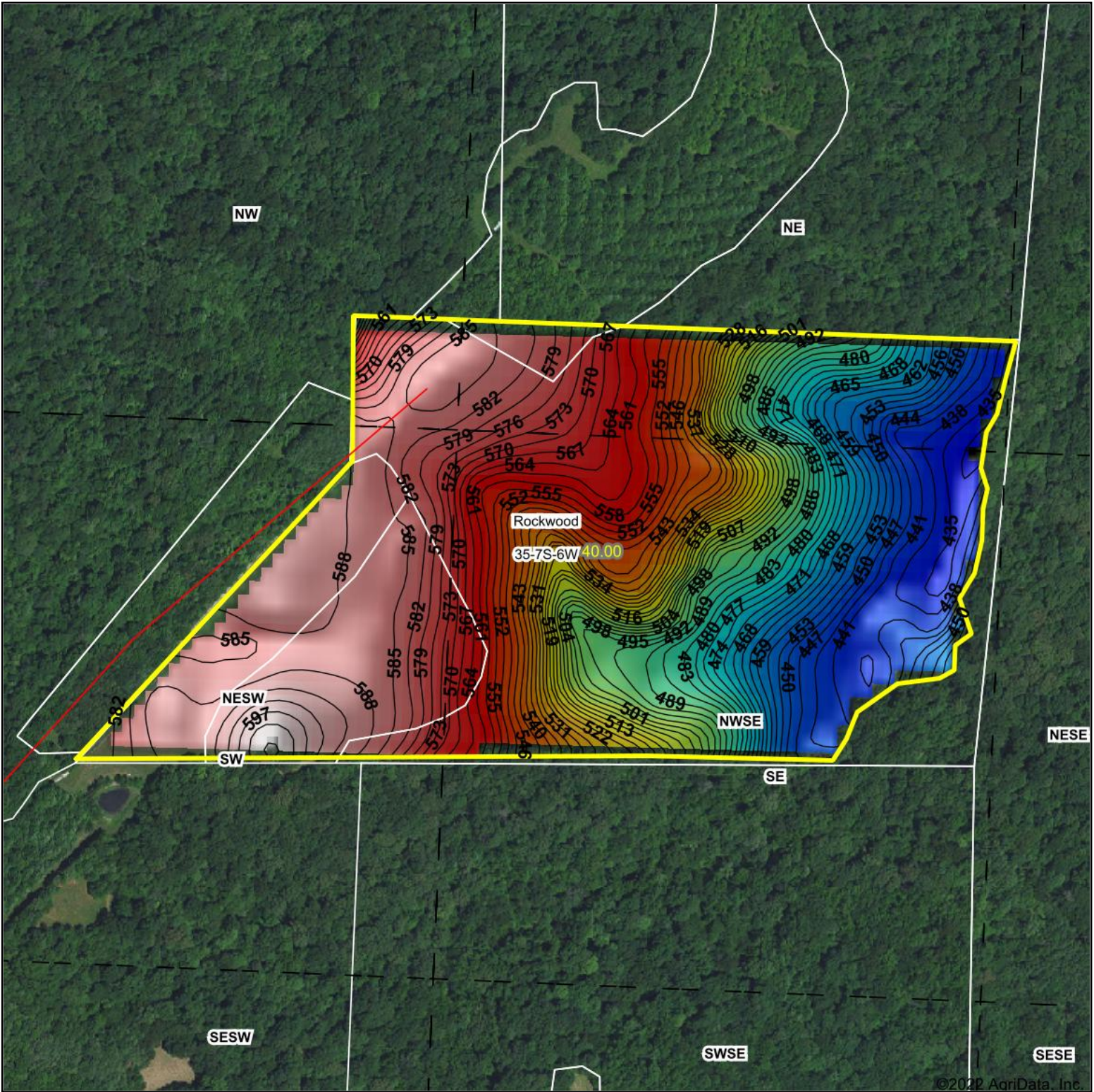
Table: Optimum Crop Productivity Ratings for Illinois Soil by K.R. Olson and J.M. Lang, Office of Research, ACES, University of Illinois at Champaign-Urbana. Version: 1/2/2012 Amended Table S2 B811

Crop yields and productivity indices for optimum management (B811) are maintained at the following NRES web site: <http://soilproductivity.nres.illinois.edu/>

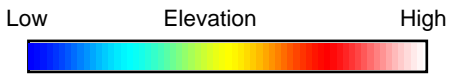
** Indexes adjusted for slope and erosion according to Bulletin 811 Table S3

Soils data provided by USDA and NRCS. Soils data provided by University of Illinois at Champaign-Urbana.

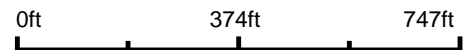
Topography Hillshade



©2022 AgriData, Inc.



Source: USGS 10 meter dem



Interval(ft): 3

Min: 430.7

Max: 603.4

Range: 172.7

Average: 526.6

Standard Deviation: 54.17 ft



10/10/2022

35-7S-6W
Randolph County
Illinois

map center: 37° 52' 31.1, -89° 43' 54.2



Maps Provided By:



© AgriData, Inc. 2021 www.AgriDataInc.com

Field borders provided by Farm Service Agency as of 5/21/2008.