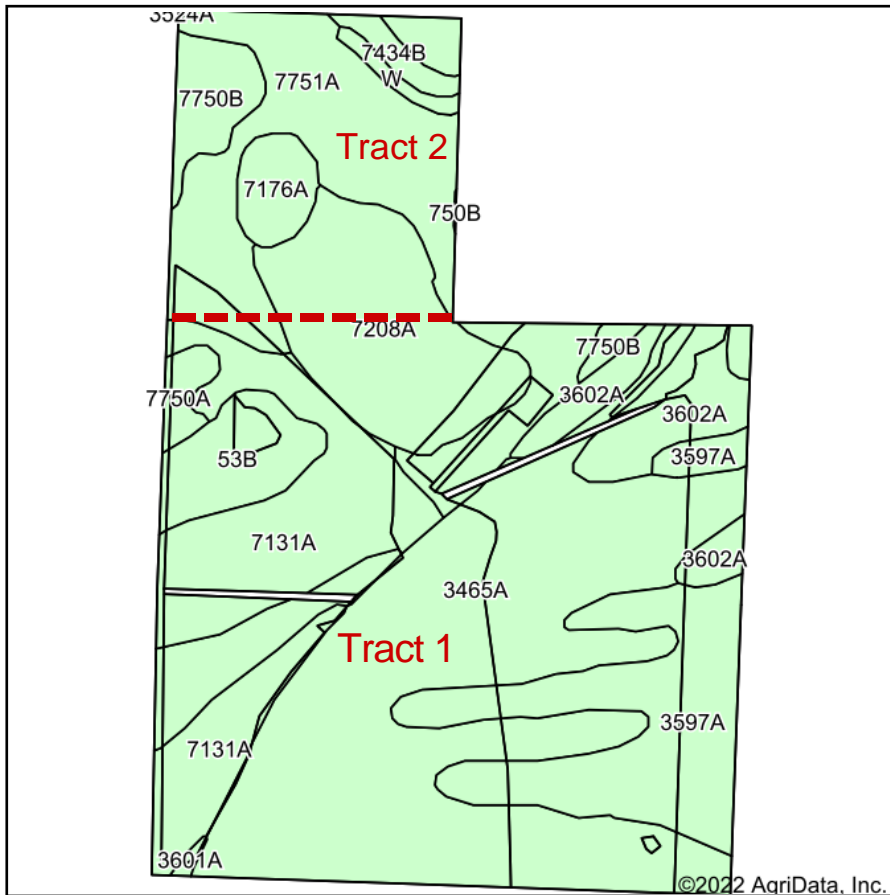


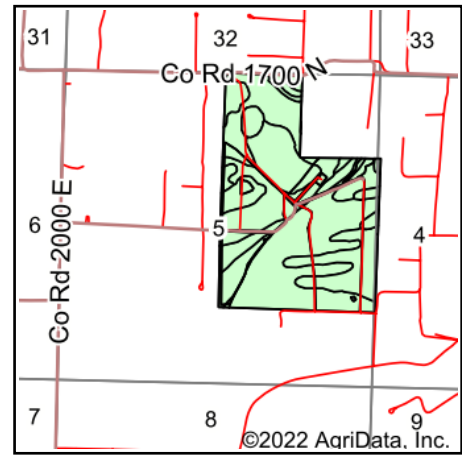
mapbox

- Boundary
- Boundary
- Wetlands
- Riparian
- Stream, Intermittent
- River/Creek
- Water Body

Soils Map



Soils data provided by USDA and NRCS.



State: **Illinois**
 County: **White**
 Location: **5-5S-14W**
 Township: **Hawthorne**
 Acres: **201.44**
 Date: **12/9/2022**



Area Symbol: IL193, Soil Area Version: 17

Code	Soil Description	Acres	Percent of field	Corn Bu/A	Soybeans Bu/A	Wheat Bu/A	Grass-legume e hay, T/A	Crop productivity index for optimum management
3465A	Montgomery silty clay loam, 0 to 2 percent slopes, frequently flooded	64.43	32.0%	148	49	58	4.52	110
7751A	Crawleyville fine sandy loam, 0 to 2 percent slopes, rarely flooded	28.55	14.2%	144	46	56	4.39	107
7131A	Alvin fine sandy loam, 0 to 2 percent slopes, rarely flooded	26.28	13.0%	150	49	59	0.00	111
3597A	Armiesburg silty clay loam, 0 to 2 percent slopes, frequently flooded	24.29	12.1%	177	57	69	0.00	132
7208A	Sexton silt loam, 0 to 2 percent slopes, rarely flooded	19.59	9.7%	157	50	63	4.89	116
**53B	Bloomfield fine sand, 1 to 5 percent slopes	12.63	6.3%	**114	**37	**49	**3.85	**84
3602A	Newark silt loam, 0 to 2 percent slopes, frequently flooded	10.42	5.2%	134	44	58	4.77	104
7750B	Skelton fine sandy loam, 2 to 5 percent slopes, rarely flooded	5.25	2.6%	144	45	55	0.00	105
7176A	Marissa silt loam, 0 to 2 percent slopes, rarely flooded	3.64	1.8%	167	53	69	5.39	123
7750A	Skelton fine sandy loam, 0 to 2 percent slopes, rarely flooded	1.85	0.9%	144	45	55	0.00	105
7434B	Ridgway silt loam, 2 to 5 percent slopes, rarely flooded	1.63	0.8%	164	50	61	0.00	117
7434A	Ridgway silt loam, 0 to 2 percent slopes, rarely flooded	1.54	0.8%	164	50	61	0.00	117
W	Water	1.06	0.5%					
3601A	Nolin silty clay loam, 0 to 2 percent slopes, frequently flooded	0.28	0.1%	159	51	60	0.00	116
Weighted Average				148.9	48.3	58.9	3.13	110.6

Table: Optimum Crop Productivity Ratings for Illinois Soil by K.R. Olson and J.M. Lang, Office of Research, ACES, University of Illinois at Champaign-Urbana. Version: 1/2/2012 Amended Table S2 B811

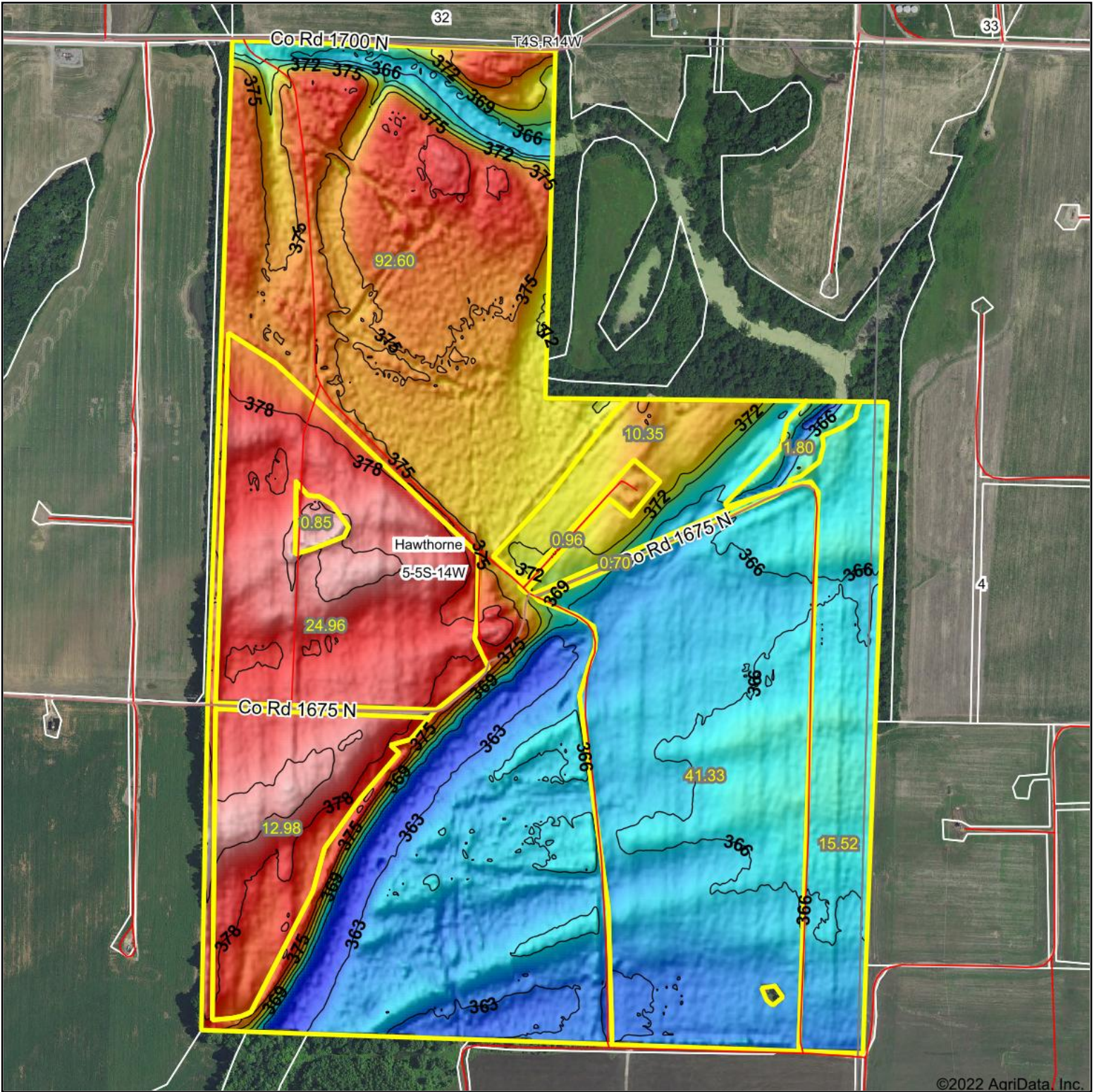
Crop yields and productivity indices for optimum management (B811) are maintained at the following NRES web site: <http://soilproductivity.nres.illinois.edu/>

** Indexes adjusted for slope and erosion according to Bulletin 811 Table S3

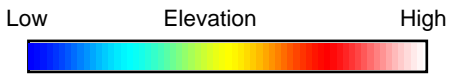
e Soils in the well drained group were not rated for grass-legume and are shown with a zero "0".

Soils data provided by USDA and NRCS. Soils data provided by University of Illinois at Champaign-Urbana.

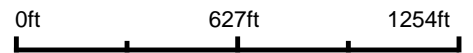
Topography Hillshade



©2022 AgriData, Inc.



Source: USGS 3 meter dem



Interval(ft): 3

Min: 360.9

Max: 383.8

Range: 22.9

Average: 371.0

Standard Deviation: 6.04 ft



12/9/2022

5-5S-14W
White County
Illinois

map center: 38° 7' 21.11, -87° 59' 59.83



Maps Provided By:



© AgriData, Inc. 2021 www.AgriDataInc.com

Field borders provided by Farm Service Agency as of 5/21/2008.