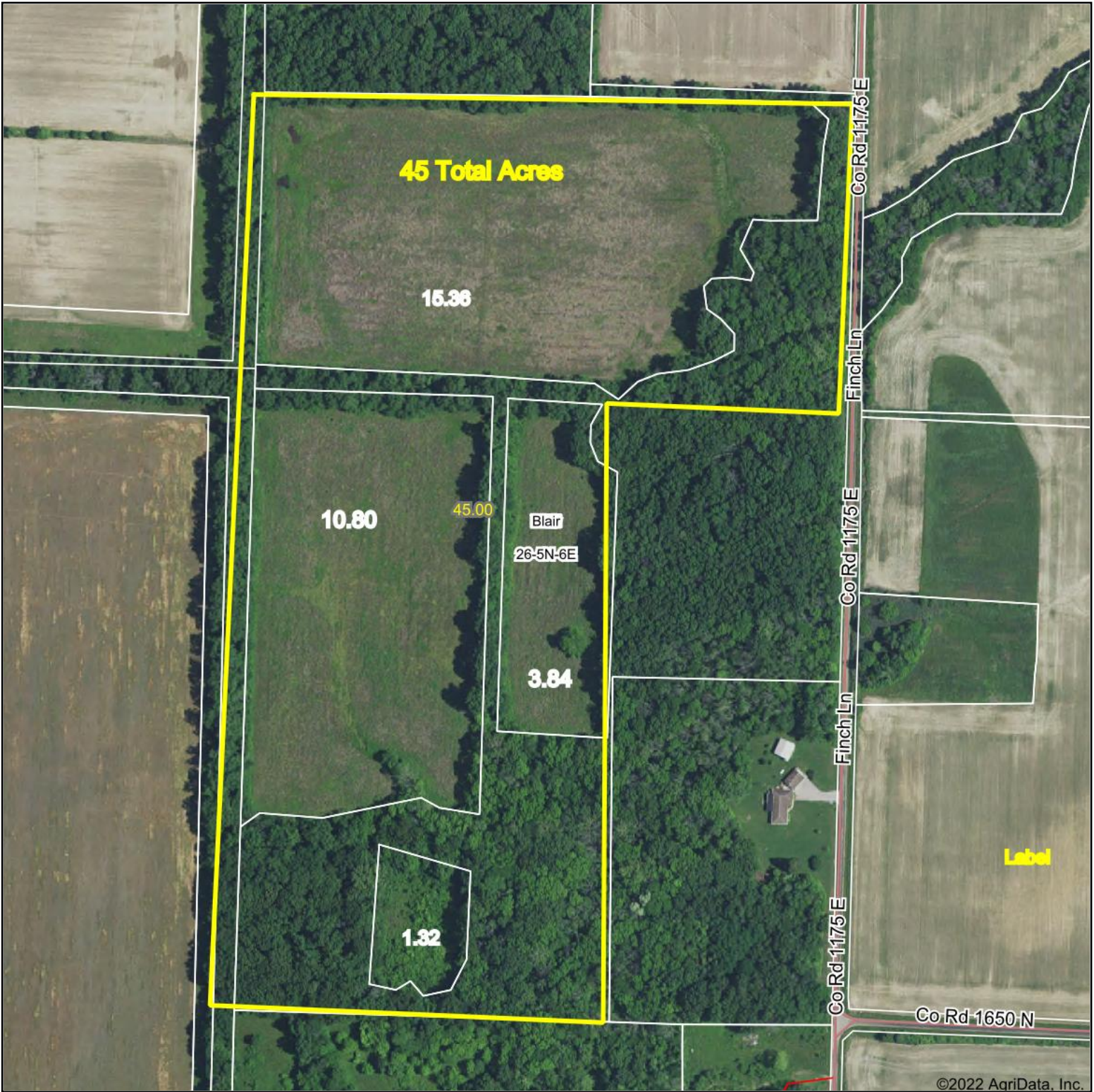
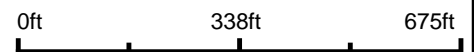


Aerial Map



©2022 AgriData, Inc.

Map Center: 38° 51' 0.16, -88° 29' 46.17

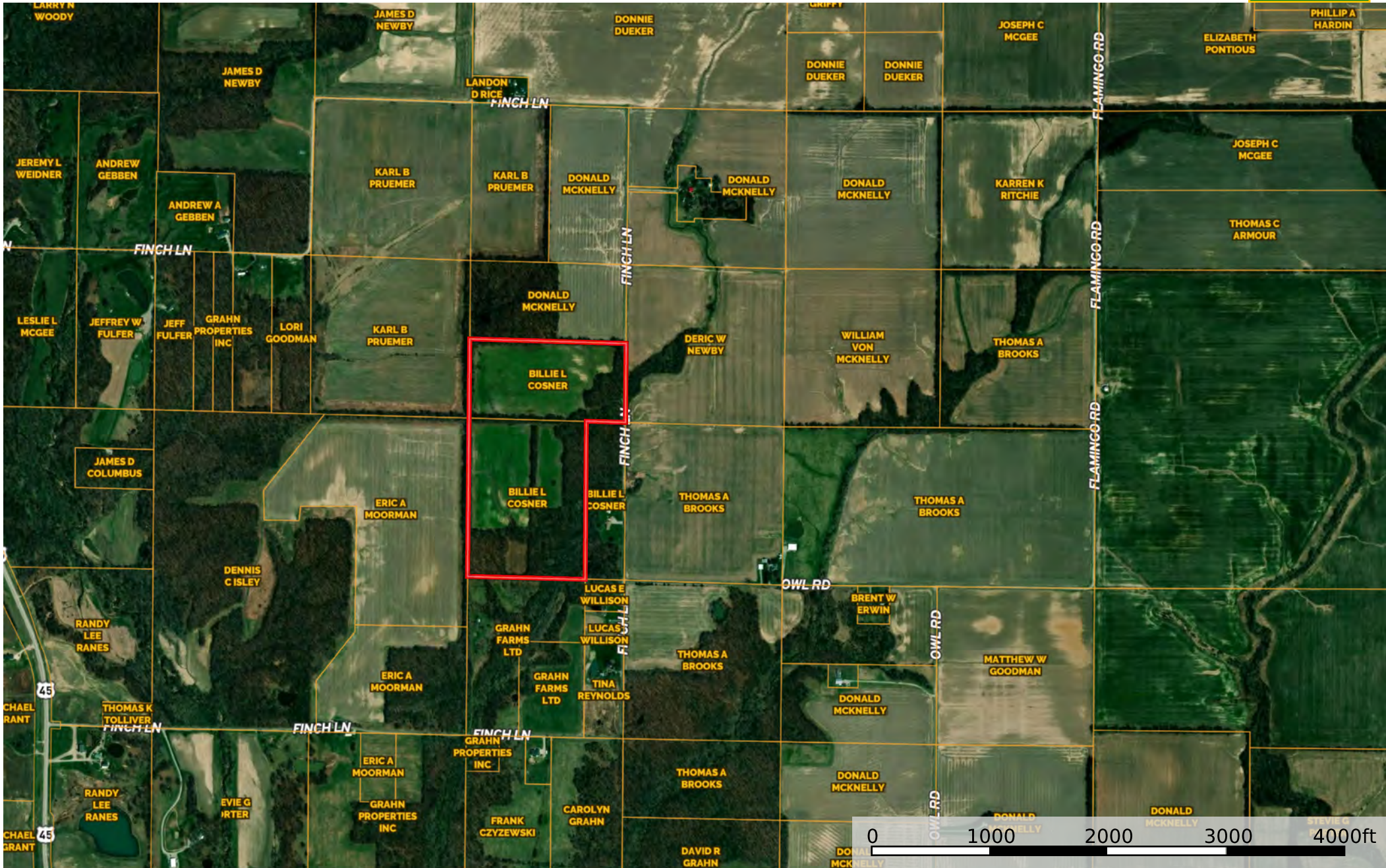


© AgriData, Inc. 2021 www.AgriDataInc.com

26-5N-6E
Clay County
Illinois

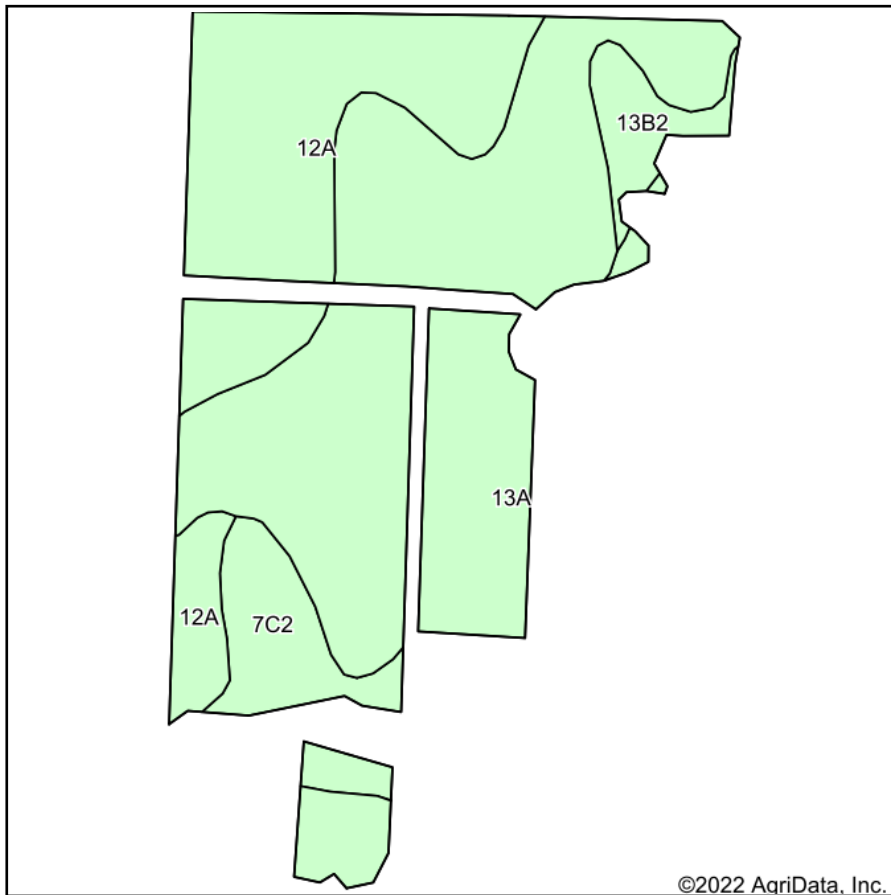


11/1/2022

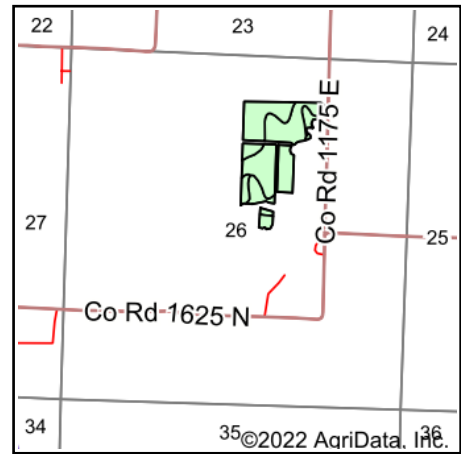


Boundary

Soils Map



Soils data provided by USDA and NRCS.



State: **Illinois**
 County: **Clay**
 Location: **26-5N-6E**
 Township: **Blair**
 Acres: **31.32**
 Date: **10/30/2022**



Maps Provided By:



Area Symbol: IL025, Soil Area Version: 16

Code	Soil Description	Acres	Percent of field	Corn Bu/A	Soybeans Bu/A	Wheat Bu/A	Grass-legume e hay, T/A	Crop productivity index for optimum management
13A	Bluford silt loam, 0 to 2 percent slopes	18.10	57.8%	136	44	55	3.39	101
12A	Wynoose silt loam, 0 to 2 percent slopes	9.22	29.4%	128	42	51	4.26	97
**7C2	Atlas silt loam, 5 to 10 percent slopes, eroded	2.75	8.8%	**105	**37	**41	**3.16	**81
**13B2	Bluford silt loam, 2 to 5 percent slopes, eroded	1.25	4.0%	**129	**42	**52	**3.22	**96
Weighted Average				130.6	42.7	52.5	3.62	97.9

Table: Optimum Crop Productivity Ratings for Illinois Soil by K.R. Olson and J.M. Lang, Office of Research, ACES, University of Illinois at Champaign-Urbana. Version: 1/2/2012 Amended Table S2 B811

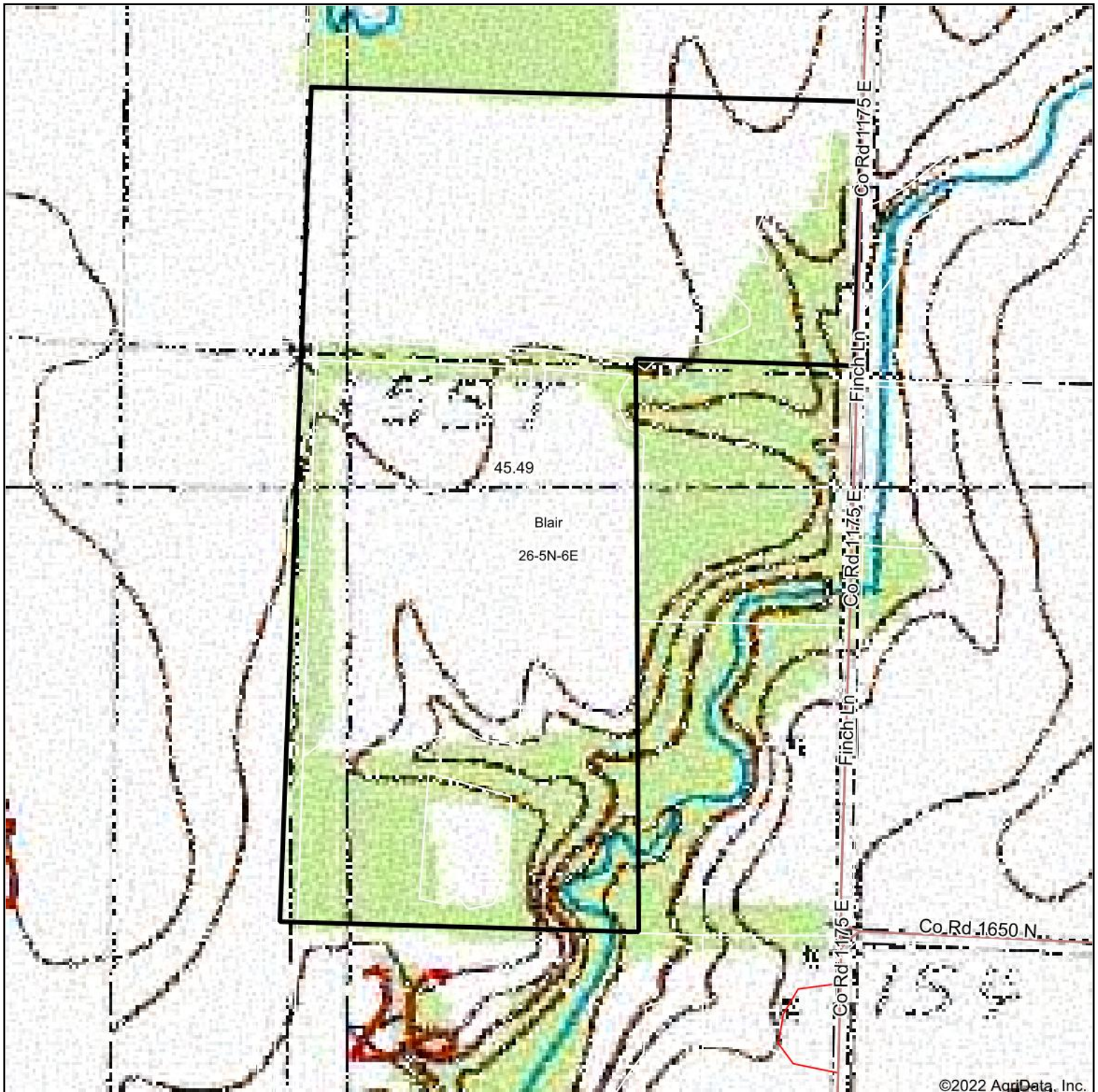
Crop yields and productivity indices for optimum management (B811) are maintained at the following NRES web site: <http://soilproductivity.nres.illinois.edu/>

** Indexes adjusted for slope and erosion according to Bulletin 811 Table S3

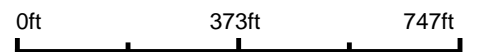
e Soils in the well drained group were not rated for grass-legume and are shown with a zero "0".

Soils data provided by USDA and NRCS. Soils data provided by University of Illinois at Champaign-Urbana.

Topography Map



map center: 38° 50' 59.08, -88° 29' 47.09



26-5N-6E
Clay County
Illinois



10/30/2022



Maps Provided By:



© AgriData, Inc. 2021

www.AgriDataInc.com