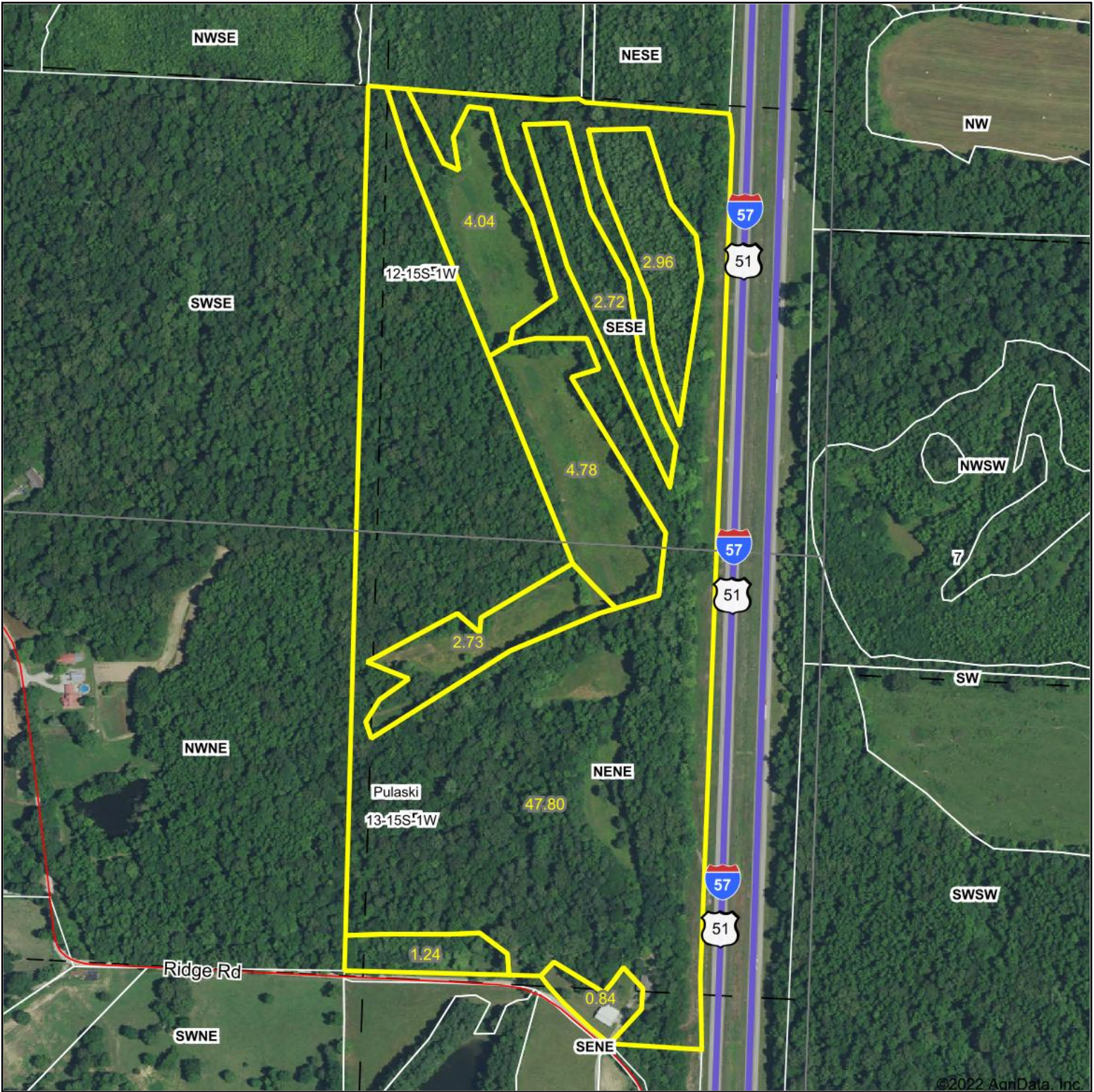


# Aerial Map



Map Center: 37° 13' 2.2, -89° 9' 34.71



13-15S-1W  
Pulaski County  
Illinois

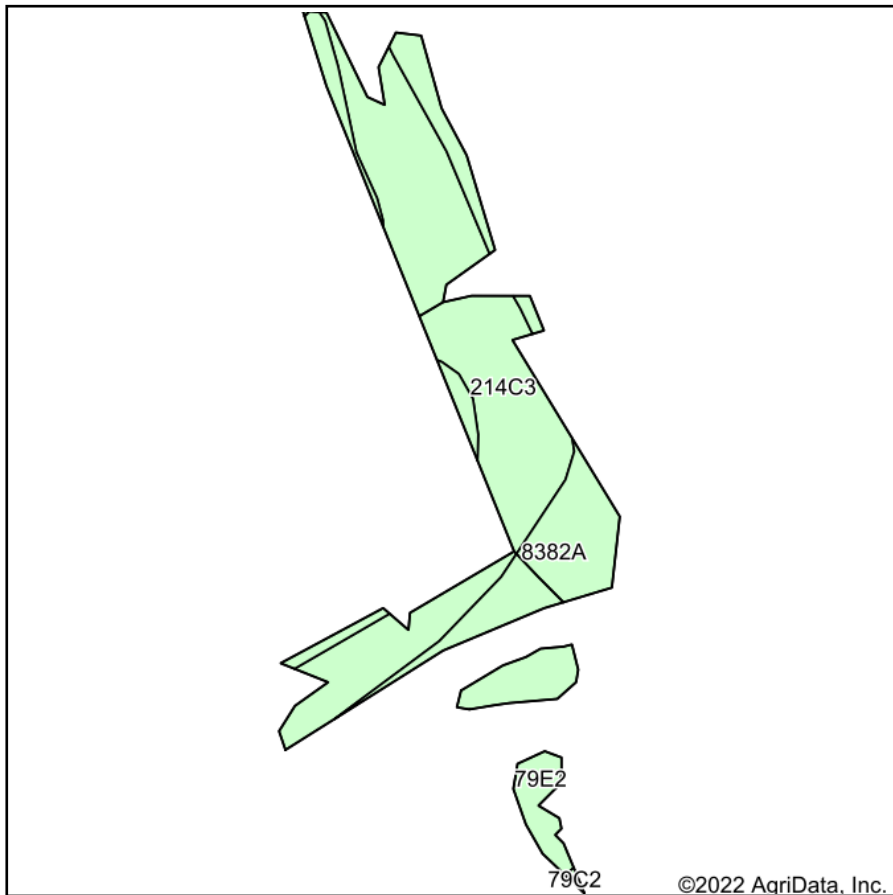


11/2/2022

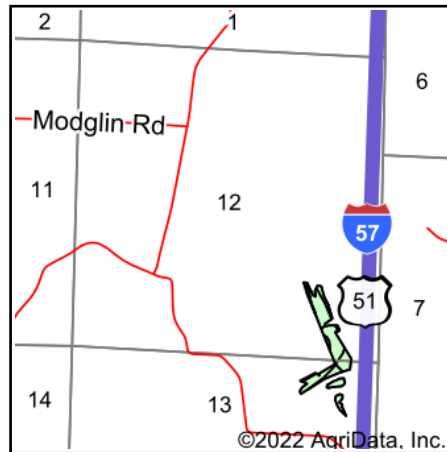
Maps Provided By:  
 surety®  
CUSTOMIZED ONLINE MAPPING  
© AgriData, Inc. 2021 www.AgriDataInc.com

Field borders provided by Farm Service Agency as of 5/21/2008.

# Soils Map



Soils data provided by USDA and NRCS.



State: **Illinois**  
 County: **Pulaski**  
 Location: **13-15S-1W**  
 Township: **Pulaski**  
 Acres: **12.9**  
 Date: **11/2/2022**



Area Symbol: IL153, Soil Area Version: 15

Code	Soil Description	Acres	Percent of field	Corn Bu/A	Soybeans Bu/A	Wheat Bu/A	Crop productivity index for optimum management
**214C3	Hosmer silt loam, 5 to 10 percent slopes, severely eroded	8.57	66.4%	**104	**34	**43	**78
8382A	Belknap silt loam, 0 to 2 percent slopes, occasionally flooded	2.99	23.2%	156	52	63	117
**79E2	Menfro silt loam, 18 to 25 percent slopes, eroded	1.34	10.4%	**124	**38	**47	**90
<b>Weighted Average</b>				<b>118.1</b>	<b>38.6</b>	<b>48.1</b>	<b>88.3</b>

**Table: Optimum Crop Productivity Ratings for Illinois Soil by K.R. Olson and J.M. Lang, Office of Research, ACES, University of Illinois at Champaign-Urbana.** Version: 1/2/2012 Amended Table S2 B811

Crop yields and productivity indices for optimum management (B811) are maintained at the following NRES web site: <http://soilproductivity.nres.illinois.edu/>

\*\* Indexes adjusted for slope and erosion according to Bulletin 811 Table S3

Soils data provided by USDA and NRCS. Soils data provided by University of Illinois at Champaign-Urbana.