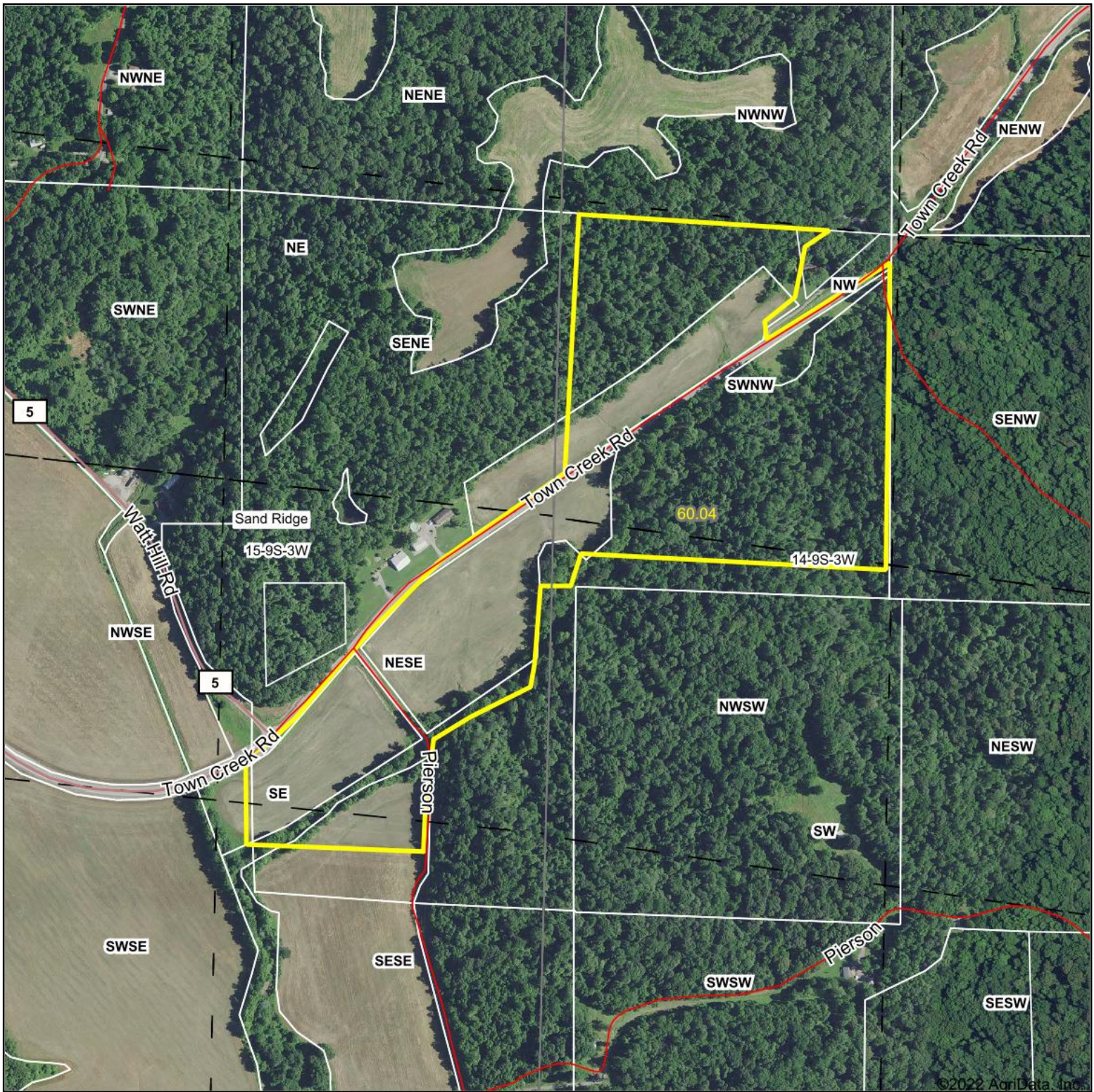


Aerial Map



©2022 AgriData, Inc.

Map Center: 37° 44' 23.94, -89° 25' 2.82



15-9S-3W
Jackson County
Illinois



11/7/2022



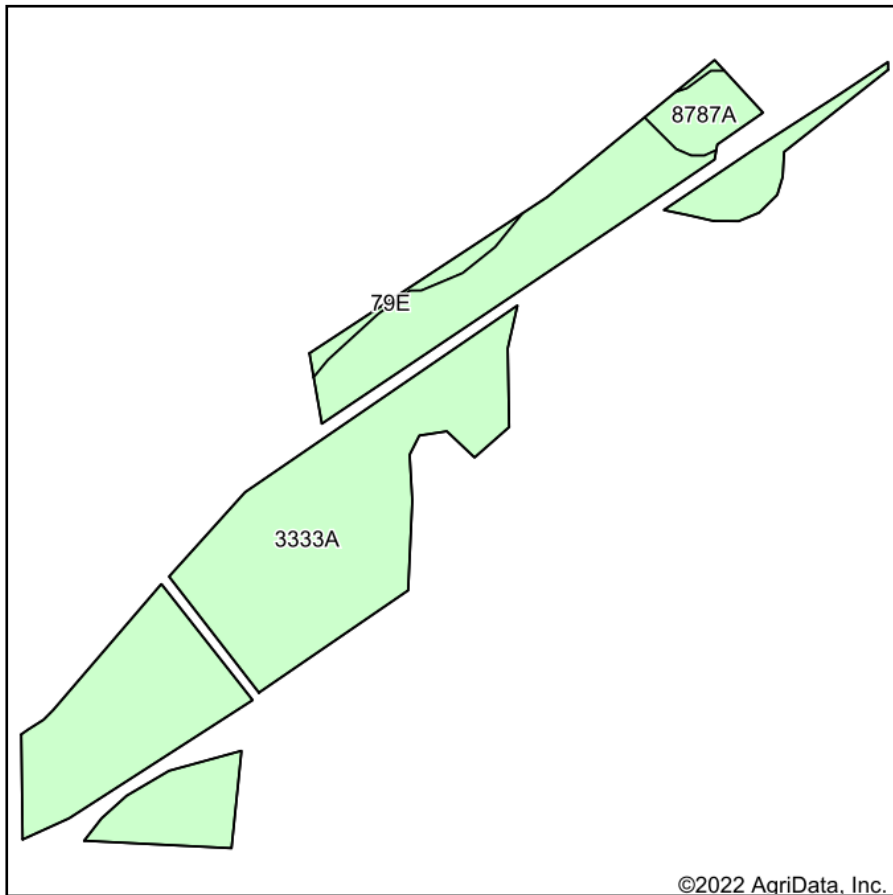
Maps Provided By:



© AgriData, Inc. 2021 www.AgriDataInc.com

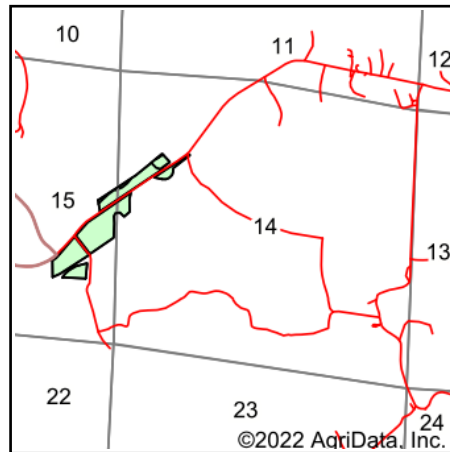
Field borders provided by Farm Service Agency as of 5/21/2008.

Soils Map



©2022 AgriData, Inc.

Soils data provided by USDA and NRCS.



©2022 AgriData, Inc.

State: **Illinois**
 County: **Jackson**
 Location: **15-9S-3W**
 Township: **Sand Ridge**
 Acres: **26.9**
 Date: **11/7/2022**



Maps Provided By:



© AgriData, Inc. 2021

www.AgriDataInc.com



Area Symbol: IL077, Soil Area Version: 22

Code	Soil Description	Acres	Percent of field	Corn Bu/A	Soybeans Bu/A	Wheat Bu/A	Crop productivity index for optimum management
3333A	Wakeland silt loam, 0 to 2 percent slopes, frequently flooded	25.08	93.2%	174	56	68	128
8787A	Banlic silt loam, 0 to 2 percent slopes, occasionally flooded	1.20	4.5%	142	47	56	106
**79E	Menfro silt loam, 18 to 25 percent slopes	0.62	2.3%	**132	**41	**50	**96
Weighted Average				171.6	55.3	67	126.3

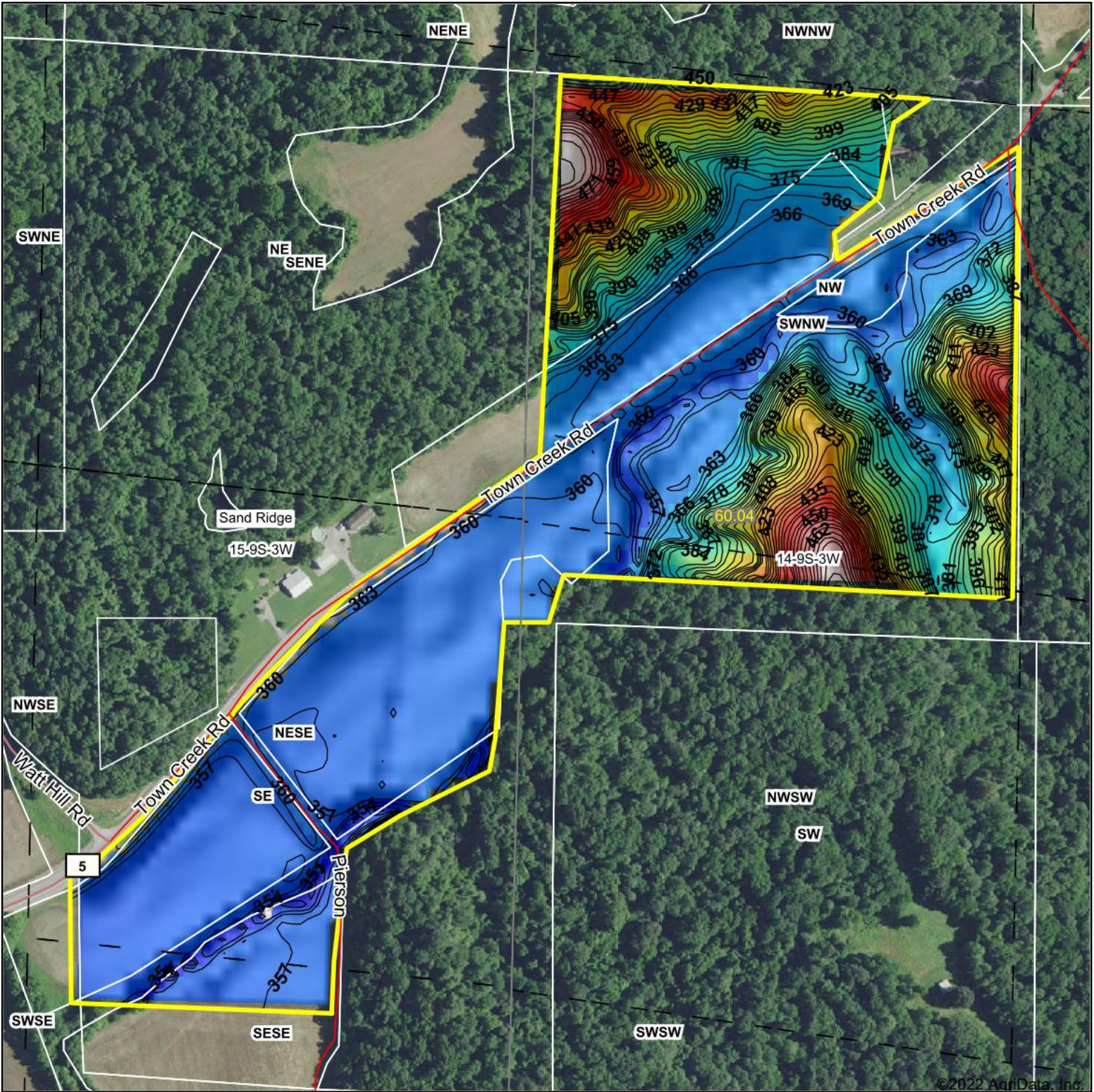
Table: Optimum Crop Productivity Ratings for Illinois Soil by K.R. Olson and J.M. Lang, Office of Research, ACES, University of Illinois at Champaign-Urbana. Version: 1/2/2012 Amended Table S2 B811

Crop yields and productivity indices for optimum management (B811) are maintained at the following NRES web site: <http://soilproductivity.nres.illinois.edu/>

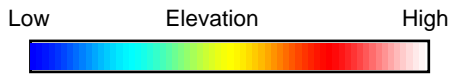
** Indexes adjusted for slope and erosion according to Bulletin 811 Table S3

Soils data provided by USDA and NRCS. Soils data provided by University of Illinois at Champaign-Urbana.

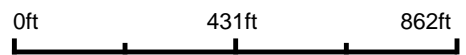
Topography Hillshade



©2022 AgriData, Inc.



Source: USGS 10 meter dem
 Interval(ft): 3
 Min: 344.5
 Max: 483.9
 Range: 139.4
 Average: 377.5
 Standard Deviation: 28.74 ft



15-9S-3W
 Jackson County
 Illinois

map center: 37° 44' 23.94, -89° 25' 2.82



Maps Provided By:



© AgriData, Inc. 2021 www.AgriDataInc.com

Field borders provided by Farm Service Agency as of 5/21/2008.